

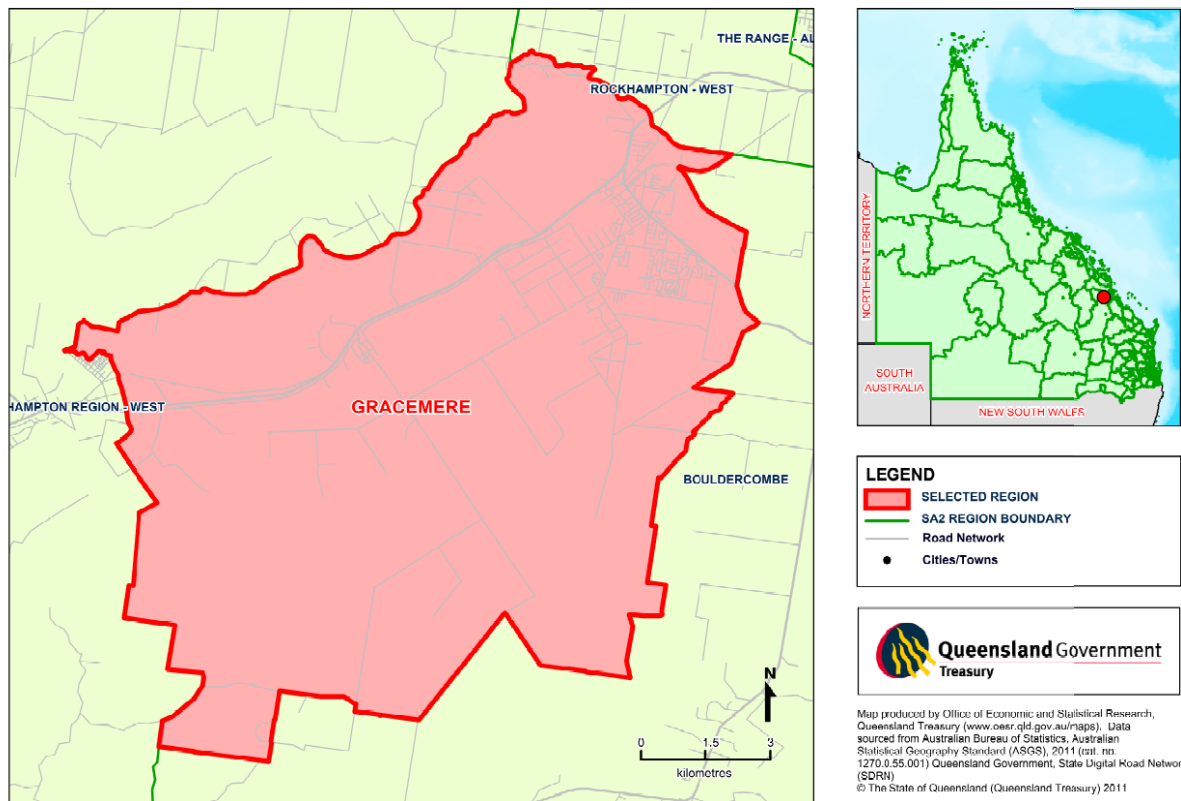
Gracemere Profile Report



LIVE-PLAY-WORK-INVEST

Gracemere Statistics

Queensland Statistical Areas, Level 2 (SA2), 2011 - Gracemere (ASGS Code 308031210)



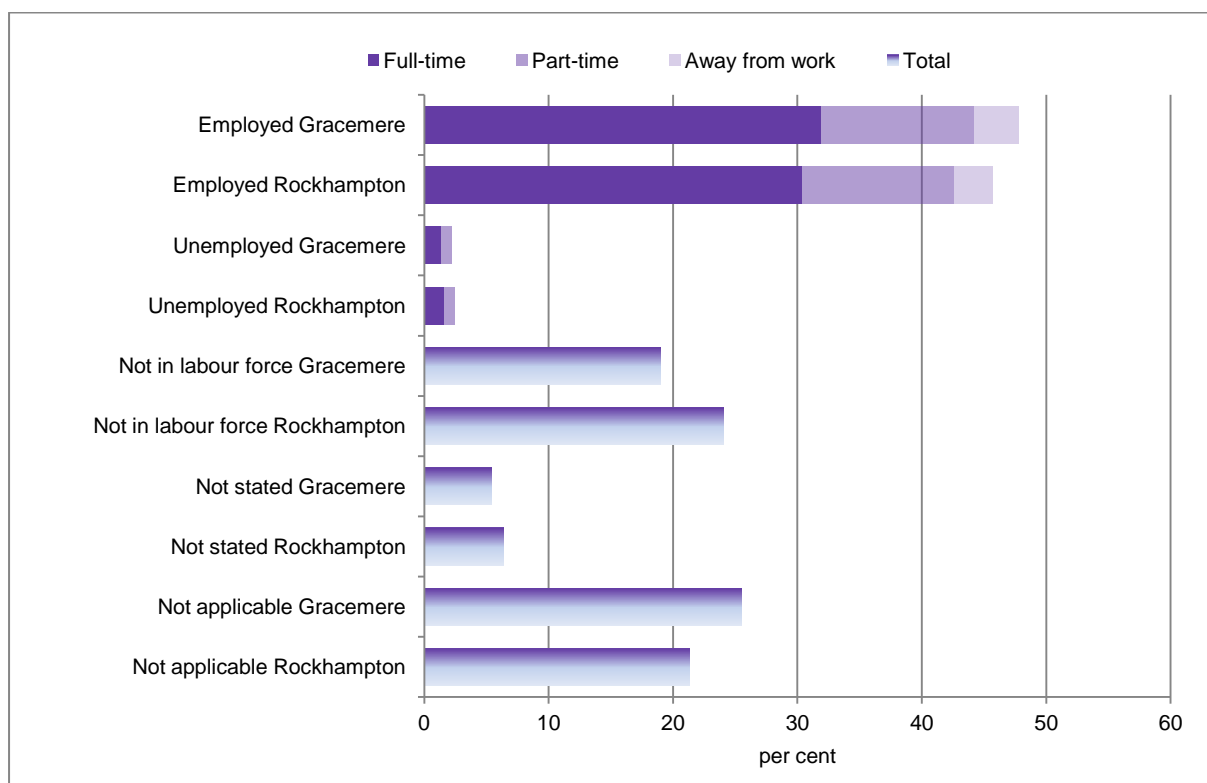
Source: Queensland Treasury and Trade, 2011

Note: In this document, Rockhampton Regional Council refers to the de-amalgamated local government area which includes the Rockhampton, Mount Morgan and Fitzroy areas. It does not include the Livingstone Shire Council area.

Employment

Labour force status applies to all people aged 15 years and over. The labour force includes people who are employed full-time, part-time and away from work and those who are unemployed but looking for full-time or part-time work. Of the 8,868 persons counted on Census night, 2011, in Gracemere SA2, 2,264 persons (25.5%) were under the age of 15 years. A further 1,688 persons (19.0%) were not in the labour force. This may be due to age, child rearing, disability, not actively looking for work or other reasons. Compared to Gracemere SA2, a smaller proportion of persons were under 15 years (21.3%, 16,354 persons) and a larger proportion were not in the labour force (30.5%, 18,467 persons) in Rockhampton (R)¹. This may be reflective of the different age profiles of the two areas.

Figure 1 Labour force status (a)(b)(c), Gracemere SA2 and Rockhampton (R), 2011



(a) Based on persons aged 15 years and over and by place of usual residence.

(b) Employed worked full-time is defined as having worked 35 hours or more in all jobs during the week prior to Census night.

(c) Employed away from work comprises employed persons who did not work any hours in the week prior to Census night.

Source: ABS Census of Population and Housing, 2011, *Basic Community Profile – B42*

Half (50.0%) of the Gracemere SA2 population were in the labour force (4,435 persons) in 2011. In Rockhampton (R), 48.3 per cent of the population were in the labour force (37,076 persons). The labour force of Gracemere was 12.0 per cent of the Rockhampton (R) labour force. At the time of the 2011 Census, 4.4 per cent of the Gracemere SA2 labour force stated they were unemployed (196 persons) in comparison to 5.3 per cent of Rockhampton (R) (1,966 persons). In the December quarter 2016, the unemployment rate in Gracemere

¹ Rockhampton (R) refers to the de-amalgamated council area which does not include the Livingstone Shire Council area.

SA2 was 7.9%, higher than in Rockhampton (R), 6.9%. Rates were 2.6 and 2.0 percentage points lower respectively than the same quarter 2015.

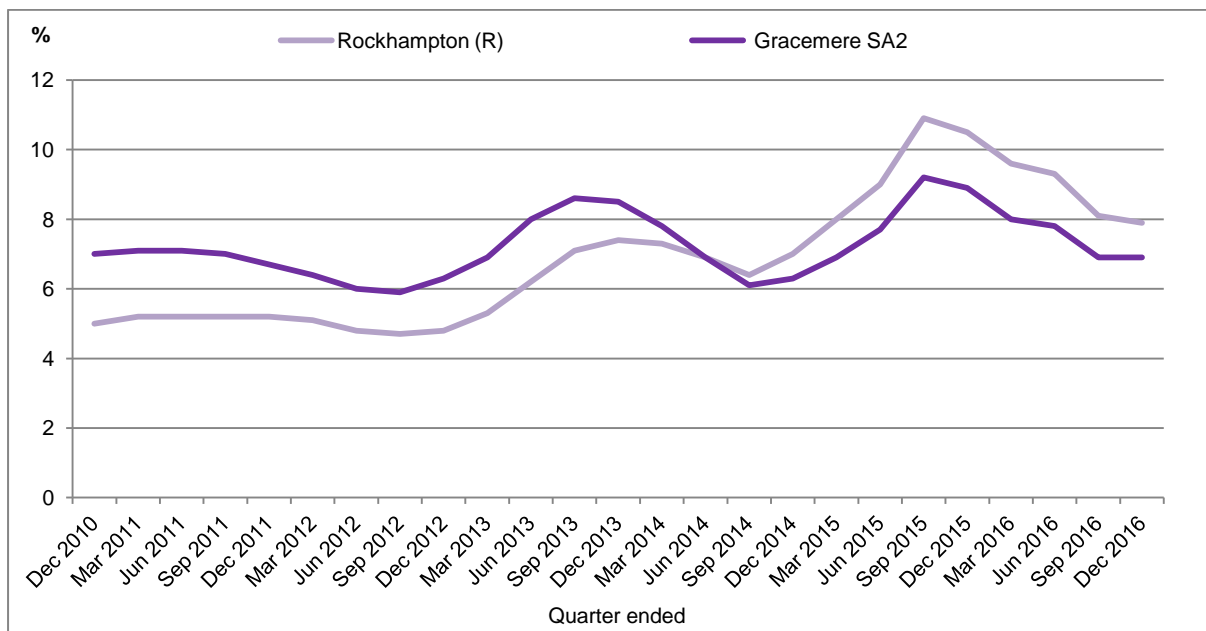
Figure 2 Labour force, Gracemere SA2 and Rockhampton (R), 2011



- (a) Based on persons aged 15 years and over and by place of usual residence.
- (b) Employed worked full-time is defined as having worked 35 hours or more in all jobs during the week prior to Census night.
- (c) Employed away from work comprises employed persons who did not work any hours in the week prior to Census night.

Source: ABS Census of Population and Housing, 2011, *Basic Community Profile – B42*

Figure 3 Unemployment rate, smoothed, Rockhampton (R) and Gracemere SA2, 2010-2016



Source: Australian Government Department of Employment, *Small area labour markets Australia*, various editions.

At the time of the 2011 Census, the largest occupational group of employed persons in the Gracemere SA2 area was technicians and trades workers (792 persons), followed by clerical and administrative workers (642 persons) and machinery operators and drivers (624 persons) (Table 5). Larger proportions of Rockhampton (R) residents were professionals and labourers than in Gracemere SA2.

Table 1 Employed persons (a)(b) by occupation, Gracemere SA2 and Rockhampton (R), 2011

| Occupation (c) | Gracemere SA2 | | Rockhampton Regional Council area | | Region as a proportion of Rockhampton (R) |
|--|---------------|--------------|-----------------------------------|--------------|---|
| | number | % | number | % | % |
| Managers | 339 | 8.0 | 3,063 | 4.0 | 11.1 |
| Professionals | 475 | 11.2 | 5,482 | 7.1 | 8.7 |
| Technicians and Trades Workers | 792 | 18.7 | 6,028 | 7.9 | 13.1 |
| Community and Personal Service Workers | 431 | 10.2 | 3,678 | 4.8 | 11.7 |
| Clerical and Administrative Workers | 642 | 15.2 | 4,996 | 6.5 | 12.9 |
| Sales Workers | 393 | 9.3 | 3,335 | 4.3 | 11.8 |
| Machinery Operators and Drivers | 624 | 14.7 | 3,313 | 4.3 | 18.8 |
| Labourers | 466 | 11.0 | 4,536 | 5.9 | 10.3 |
| Inadequately described/not stated | 72 | 1.7 | 674 | 0.9 | 10.7 |
| Total | 4,234 | 100.0 | 35,105 | 100.0 | 12.1 |

(a) Based on place of usual residence.

(b) Aged 15 years and over.

(c) Based on Australian Bureau of Statistics, Australian Standard Classification of Occupations, First Edition, Revision 1.

Source: Australian Bureau of Statistics, Census of Population and Housing, 2011, *Basic Community Profile – B44*.

At the time of the 2011 Census, health care and social assistance was the largest employing industry in the Gracemere SA2 area, accounting for 548 (12.9 %) of the area's workforce (Table 4). Other significant industries included retail trade (11.2%), transport, postal and warehousing (9.3%), construction (8.8%) and mining (7.8%). A higher proportion of the Rockhampton Regional Council area's mining (22.8%) and transport, postal and warehousing workforce (16.0%) lived in the Gracemere area.

Of the 4,234 workers who lived in Gracemere SA2 at the time of the 2011 Census, approximately three-quarters (73.9%) worked in Rockhampton (R); however, only 686 workers lived and worked in the Gracemere SA2 (16.2%). Of the remaining workers who stated where they lived, small numbers worked in New South Wales (7 persons) and Western Australia (12 persons), with the others working elsewhere in Queensland (21.6% or 914 persons). Other than the Rockhampton Regional Council, the local government areas with the highest numbers of Gracemere SA2 workers were Banana (S) (40 persons), Central Highlands (R) (217 persons), Isaac (R) (115 persons) and Livingstone (S) (85 persons).

Table 2 Employed persons (a)(b) by industry, Gracemere SA2 and Rockhampton (R), 2011

| Industry (c) | Gracemere SA2 | | Rockhampton (R) | | Region as a proportion of Rockhampton (R) |
|---|---------------|--------------|-----------------|--------------|---|
| | number | % | number | % | % |
| Agriculture, forestry and fishing | 65 | 1.5 | 564 | 1.6 | 11.5 |
| Mining | 330 | 7.8 | 1,446 | 4.1 | 22.8 |
| Manufacturing | 277 | 6.5 | 2,869 | 8.2 | 9.7 |
| Electricity, gas, water and waste services | 93 | 2.2 | 971 | 2.8 | 9.6 |
| Construction | 373 | 8.8 | 2,791 | 8.0 | 13.4 |
| Wholesale trade | 204 | 4.8 | 1,322 | 3.8 | 15.4 |
| Retail trade | 473 | 11.2 | 3,899 | 11.1 | 12.1 |
| Accommodation and food services | 272 | 6.4 | 2,480 | 7.1 | 11.0 |
| Transport, postal and warehousing | 393 | 9.3 | 2,456 | 7.0 | 16.0 |
| Information media and telecommunications | 28 | 0.7 | 282 | 0.8 | 9.9 |
| Financial and insurance services | 55 | 1.3 | 598 | 1.7 | 9.2 |
| Rental, hiring and real estate services | 70 | 1.7 | 487 | 1.4 | 14.4 |
| Professional, scientific and technical services | 127 | 3.0 | 1,275 | 3.6 | 10.0 |
| Administrative and Support Services | 91 | 2.1 | 851 | 2.4 | 10.7 |
| Public Administration and Safety | 248 | 5.9 | 2,321 | 6.6 | 10.7 |
| Education and Training | 269 | 6.4 | 3,036 | 8.6 | 8.9 |
| Health Care and Social Assistance | 548 | 12.9 | 4,863 | 13.9 | 11.3 |
| Arts and Recreation Services | 17 | 0.4 | 270 | 0.8 | 6.3 |
| Other Services | 201 | 4.7 | 1,525 | 4.3 | 13.2 |
| Inadequately described/Not stated | 100 | 2.4 | 797 | 2.3 | 12.5 |
| Total | 4,234 | 100.0 | 35,105 | 100.0 | 12.1 |

(a) Based on usual residence.

(b) Aged 15 years and over.

(c) Based on Australian Bureau of Statistics, Australian and New Zealand Standard Industrial Classification 2006 (Revision 1.0).

Source: Australian Bureau of Statistics, Census of Population and Housing, 2011, *Basic Community Profile – B43*.

Economy

Business counts

In the 2015/16 financial year, there were 489 businesses registered in Gracemere SA2, an increase of 2.5 per cent or 12 businesses more than the previous financial year.

Over half (61.1%) of all businesses registered in the Gracemere Statistical Area Level 2 (SA2) were non-employing. More than one-quarter (26.2%) had one to four employees while there were no businesses with more than 200 employees. More than one in ten (13.5%) businesses had between 5 and 19 employees.

The majority of non-employing, or owner operated, businesses were in the agriculture, forestry and fishing industry (68 businesses), followed by construction (51 businesses) and transport, postal and warehousing (39 businesses).

The construction industry had the largest proportion of businesses (22.1%), followed by agriculture, forestry and fishing (16.0%) and transport, postal and warehousing (13.0%).

Table 3 Business counts by employment size, Gracemere SA2, 2015/16

| | No. of employees | | | | | Total |
|---|------------------|------------|-----------|----------|----------|------------|
| | Non employing | 1-4 | 5-19 | 20-199 | 200+ | |
| Accommodation and Food Services | 3 | 3 | 6 | 3 | 0 | 11 |
| Administrative and Support Services | 11 | 10 | 0 | 0 | 0 | 19 |
| Agriculture, Forestry and Fishing | 68 | 4 | 3 | 0 | 0 | 78 |
| Arts and Recreation Services | | | | | | |
| Construction | 51 | 39 | 12 | 3 | 0 | 108 |
| Education and Training | 3 | 3 | 0 | 0 | 0 | 3 |
| Electricity, Gas, Water and Waste Services | 3 | 3 | 0 | 0 | 0 | 4 |
| Financial and Insurance Services | 21 | 0 | 0 | 0 | 0 | 21 |
| Health Care and Social Assistance | 6 | 4 | 3 | 0 | 0 | 18 |
| Information Media and Telecommunications | 0 | 3 | 0 | 0 | 0 | 3 |
| Manufacturing | 16 | 4 | 5 | 0 | 0 | 21 |
| Mining | 0 | 0 | 3 | 0 | 0 | 4 |
| Other Services | 17 | 13 | 9 | 0 | 0 | 40 |
| Professional, Scientific and Technical Services | 13 | 4 | 3 | 0 | 0 | 20 |
| Public Administration and Safety | 3 | 0 | 0 | 0 | 0 | 3 |
| Rental, Hiring and Real Estate Services | 24 | 4 | 3 | 0 | 0 | 26 |
| Retail Trade | 9 | 5 | 8 | 0 | 0 | 27 |
| Transport, Postal and Warehousing | 39 | 23 | 8 | 0 | 0 | 64 |
| Wholesale Trade | 6 | 3 | 3 | 0 | 0 | 9 |
| Not classified | 3 | 0 | 0 | 0 | 0 | 3 |
| Total | 299 | 128 | 66 | 6 | 0 | 489 |

Source: ABS, *Counts of Australian Businesses, including Entries and Exits*, various editions, cat. no. 8165.0

Less than one quarter (23.7%) of all businesses in Gracemere SA2 had a turnover of less than \$50,000 in the financial year 2015/16. A further 18.8 per cent had a turnover between \$50,000 and \$100,000. Businesses earning more than \$2 million accounted for 4.1 per cent of Gracemere SA2 businesses.

Agriculture, forestry and fishing had the largest number of businesses with a turnover of less than \$50 thousand, followed by transport, postal and warehousing and construction.

The construction industry had the largest number of businesses earning more than \$2 million, followed by transport, postal and warehousing.

Table 4 Business Counts by turnover range, Gracemere SA2, 2015/16

| | Turnover range (\$) | | | | | |
|---|---------------------|-----------------------|------------------------|------------------------|----------------------|------------|
| | 0 to less than 50k | 50k to less than 100k | 100k to less than 200k | 200k to less than 500k | 500k to less than 2m | 2m or more |
| Accommodation and Food Services | 0 | 3 | 3 | 3 | 3 | 0 |
| Administrative and Support Services | 6 | 7 | 3 | 3 | 0 | 0 |
| Agriculture, Forestry and Fishing | 41 | 14 | 12 | 9 | 5 | 0 |
| Arts and Recreation Services | 3 | 3 | 0 | 3 | 0 | 0 |
| Construction | 13 | 16 | 28 | 17 | 21 | 8 |
| Education and Training | 3 | 0 | 0 | 3 | 0 | 0 |
| Electricity, Gas, Water and Waste Services | 0 | 0 | 0 | 3 | 0 | 0 |
| Financial and Insurance Services | 15 | 3 | 3 | 3 | 0 | 0 |
| Health Care and Social Assistance | 3 | 0 | 3 | 10 | 3 | |
| Information Media and Telecommunications | 0 | 0 | 3 | 0 | 0 | 0 |
| Manufacturing | 0 | 5 | 11 | 4 | 4 | 0 |
| Mining | 0 | 0 | 0 | 0 | 3 | 0 |
| Other Services | 4 | 7 | 5 | 5 | 7 | 3 |
| Professional, Scientific and Technical Services | 5 | 9 | 3 | 3 | 0 | 0 |
| Public Administration and Safety | 0 | 3 | 0 | 0 | 0 | 0 |
| Rental, Hiring and Real Estate Services | 6 | 3 | 8 | 4 | 3 | 0 |
| Retail Trade | 4 | 5 | 3 | 3 | 6 | 3 |
| Transport, Postal and Warehousing | 10 | 11 | 8 | 20 | 10 | 3 |
| Wholesale Trade | 3 | 0 | 3 | 0 | 3 | 3 |
| Not Classified | 0 | 3 | 0 | 0 | 0 | 0 |
| Total | 116 | 92 | 96 | 93 | 68 | 20 |

Source: ABS, *Counts of Australian Businesses, including Entries and Exits*, various editions, cat. no. 8165.0

Building approvals

In the year ending February 2017, the value of building approvals for new houses in Gracemere SA2 accounted for approximately one-sixth (14.4%) of all approvals' value in the Rockhampton (R) area. The value of approvals for new other residential building and alterations, additions and conversions was generally 10 per cent of the value of such approvals in Rockhampton (R). The value of non-residential building approvals in Gracemere SA2 was a small proportion of the Rockhampton (R) total (2.2%).

Table 5 Value of residential and non-residential building approvals, Rockhampton (R) and Gracemere SA2

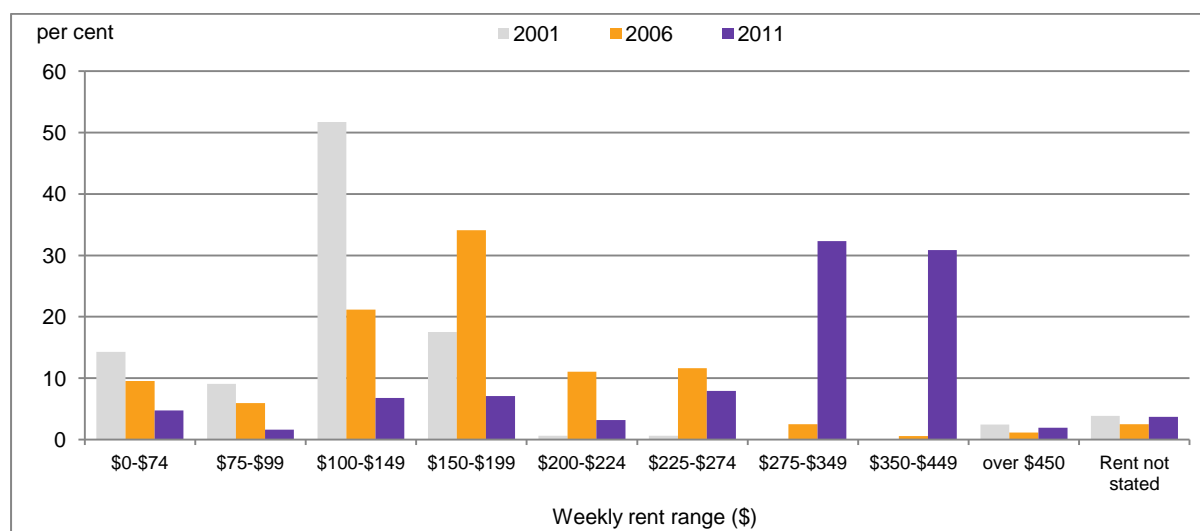
| Month | Residential building value | | | | | | Non-residential building value (\$000) | |
|--------|----------------------------|---------------|--|---------------|--|---------------|--|---------------|
| | New Houses (\$000) | | New Other residential building (\$000) | | Alterations, additions and conversions (\$000) | | Rockhampton (R) | Gracemere SA2 |
| | Rockhampton (R) | Gracemere SA2 | Rockhampton (R) | Gracemere SA2 | Rockhampton (R) | Gracemere SA2 | | |
| Mar 16 | 14,891 | 2,171 | 300 | 0 | 3,140 | 132 | 3,500 | 648 |
| Apr 16 | 11,974 | 506 | 2,850 | 0 | 2,350 | 442 | 2,997 | 0 |
| May 16 | 11,899 | 923 | 470 | 260 | 2,304 | 109 | 3,818 | 0 |
| Jun 16 | 6,502 | 776 | 940 | 0 | 1,535 | 53 | 11,292 | 0 |
| Jul 16 | 8,610 | 220 | 0 | 0 | 1,122 | 83 | 2,150 | 0 |
| Aug 16 | 7,922 | 260 | 535 | 260 | 2,651 | 135 | 2,626 | 0 |
| Sep 16 | 9,395 | 2,938 | 340 | 0 | 1,468 | 111 | 2,107 | 50 |
| Oct 16 | 8,405 | 2,424 | 210 | 0 | 1,730 | 68 | 8,508 | 485 |
| Nov 16 | 11,510 | 1,667 | 0 | 0 | 3,438 | 183 | 9,642 | 60 |
| Dec 16 | 5,647 | 2,101 | 0 | 0 | 828 | 62 | 543 | 0 |
| Jan 17 | 4,648 | 544 | 0 | 0 | 1,164 | 96 | 11,187 | 100 |
| Feb 17 | 8,793 | 1,365 | 10,500 | 0 | 1,011 | 139 | 4,049 | 0 |

Source: ABS, *Building Approvals, Australia, various editions, cat. no. 8731.0*

Weekly rents

Although rental values do not compare directly across time because of inflation, it is interesting to consider how the pattern has changed. Three-quarters of renters in Gracemere SA2 in 2001 paid less than \$150 rent per week. In 2011, the proportion of renters paying this amount was 13.1 per cent, while 63.2 per cent paid between \$275 and \$449 per week.

Figure 4 Weekly rent (a), Gracemere, 2001-2011



(a) Count of private dwelling being rented, including dwelling occupied rent-free.

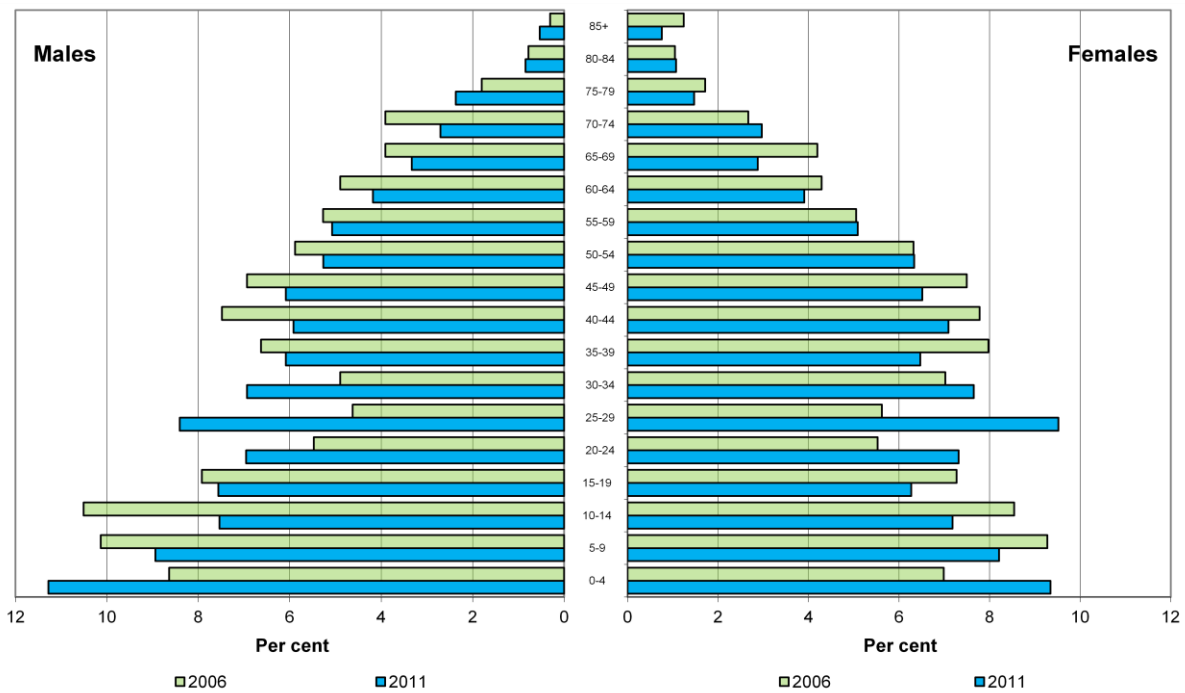
Source: ABS, Census of Population and Housing, 2011, *Time Series Profile – T19*

Population

Between 2006 and 2011, there was a significant increase in the proportion of young children under five years in the Gracemere SA2. The proportion of people in the 20 to 34 year age

groups also increased while there are generally smaller proportions of older residents. In general, the area showed a younger profile at the time of the 2011 Census than in 2006.

Figure 5 Population pyramid (a), age by sex, Gracemere SA, 2006-2011

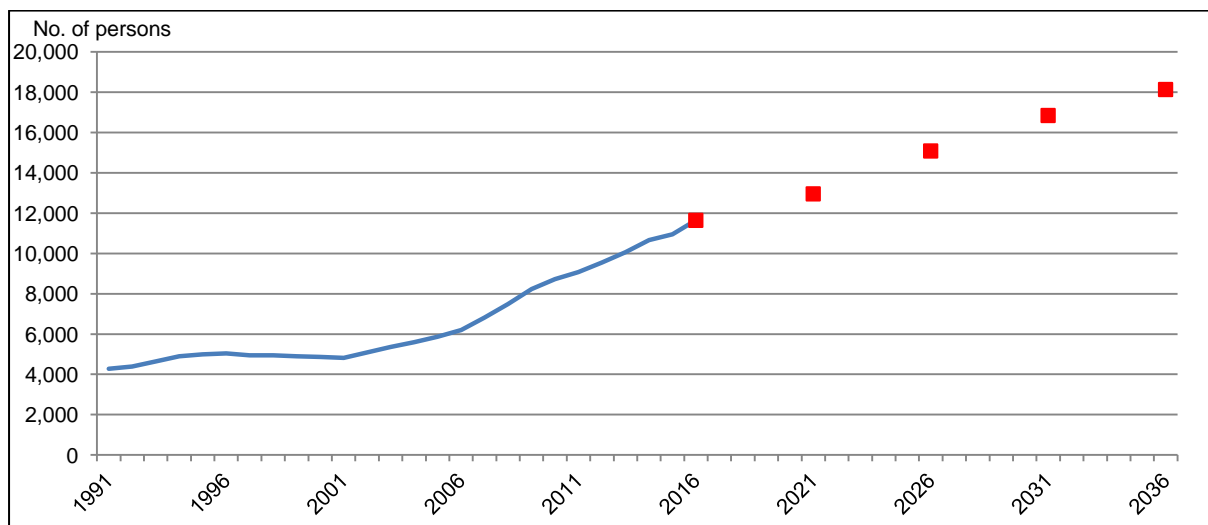


(a) Based on place of enumeration.

Source: ABS, Census of Population and Housing, 2011, *Time Series Profile – T03*

Gracemere SA2 experienced high growth rates between 2001 and 2011, with an average annual increase of 8.4 per cent. This is significantly higher than the average annual growth rate in Rockhampton (R) of 1.3 per cent. Gracemere is projected to have higher growth rates than Rockhampton (R).

Figure 6 Actual and projected population (medium series), Gracemere SA2, 1991-2036



Source: ABS, *Regional Population Growth, Australia, 2011*, cat. no. 3218.0 and unpublished data. Queensland Treasury and Trade, *Queensland Government Population Projections, 2015 edition* (medium series).

Education

Of persons aged 15 years and over in Gracemere SA2 at the time of the 2011 Census, 48.3 per cent (3,194 persons) held a non-school educational qualification, compared with 49.1 per cent (29,649 persons) in Rockhampton (R) (Table 6). In Gracemere SA2, a higher proportion of people held certificates than in Rockhampton (R).

Table 6 Non-school qualifications (a), Capricorn Region, 2011

| Educational qualification | Gracemere SA2 | Rockhampton (R) | Region as a % of Rockhampton (R) |
|--------------------------------|---------------|-----------------|----------------------------------|
| | — persons — | | % |
| Bachelor degree or higher | 522 | 6,631 | 7.9 |
| Advanced diploma and diploma | 388 | 3,088 | 12.6 |
| Certificate | 1,527 | 12,022 | 12.7 |
| Total (b) | 3,194 | 29,649 | 10.8 |
| Persons 15 years and over | 6,607 | 60,421 | 10.9 |
| Proportion with qualifications | 48.3 | 49.1 | .. |

.. = not applicable

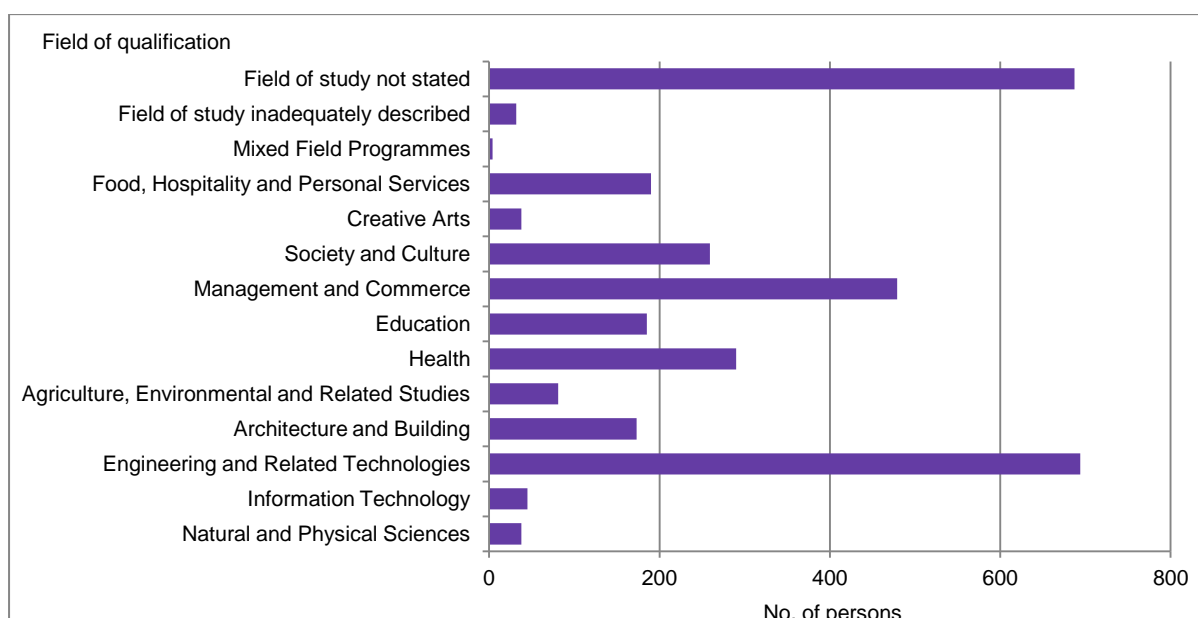
(a) Persons aged 15 years and over and based on place of usual residence.

(b) Includes inadequately described and not stated responses.

Source: Australian Bureau of Statistics, Census of Population and Housing, 2011, *Basic Community Profile – B-40*.

In the Gracemere SA2 at the time of the 2011 Census, the most common field of qualification was in engineering and related technologies (21.7%) (Figure 6). This was also the most popular field of study for Rockhampton (R) (18.9%) and Queensland (16.8%). Management and commerce was the second most popular field of study for Gracemere SA2 (15.0%), followed by health (9.1%).

Figure 7 Field of educational qualifications (a), Gracemere SA2, 2011



(a) Persons aged 15 years and over and based on place of usual residence.

Source: ABS, Census of Population and Housing, 2011, *Basic Community Profile – B41*.