

LIVE – PLAY – WORK – INVEST

Capricorn Coast and Rockhampton

EDITION 1 MAY 2015



Yeppoon, Capricorn Coast



Livability



Connectivity



**A growing
region**



**Education
Economy**



**Investment
Ready**



Livability

AVERAGE ANNUAL TEMPERATURES:

Rockhampton: 17.3°C to 28.5°C
Yeppoon: 18.5°C to 25.8°C

RAINFALL:

Rockhampton: 864.2mm
Yeppoon: 956.1mm

Population
119 817

Annual Growth

Region	1.6 %
Capricorn Coast	2.8 %
Queensland	1.8 %

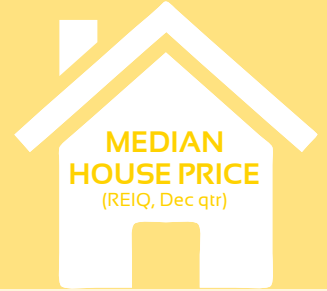
\$300 000
Rockhampton

\$372 750
Capricorn Coast

Public Parks:
over 75



including the Rockhampton Botanical Gardens, Yeppoon Foreshore and more.



MEDIAN HOUSE PRICE
(REIQ, Dec qtr)

SPORTING TEAMS

Central Queensland NRL Bid

CAPRAS: Queensland Rugby

League Football, Intrust Super Cup

ROCKHAMPTON ROCKETS & CYCLONES:

Queensland Basketball League



Connectivity



SECURE
car parking

99

Scheduled flights per week

712 200

Annual passenger movements
(YE June 2014)

3rd

largest commercial runway in Qld



CARRIERS:

Qantaslink, Virgin Australia

DOMESTIC CHARTERS: Jetgo, Corporate Air, Alliance Airways, Virgin Australia, Skytrans, Pel-Air

INTERNATIONAL CHARTERS FOR MILITARY PURPOSES:

Singapore Airlines, Air New Zealand, Qantas Airways

DEDICATED GENERAL AVIATION AREA AIR CHARTERS:

Rockhampton Aero Club and Peace Aviation Pty Ltd (Rockhampton (R) 2015)



A Growing Region

TOURISM: The Capricorn Coast and Rockhampton form the most northern precincts of the Southern Great Barrier Reef. Feel the awe of discovering stunning, secluded reef that's within reach, unlock the secrets of the ages at Capricorn Caves, and relish in local culinary delights, from beef to crocodile, and mud crab to tropical fruits.

over 30 MAJOR events

Hundreds of local events and dozens of regular markets, including:

- Beef Australia
- The Village Arts Festival
- Brisbane to Keppel Tropical Yacht Race
- Rockhampton River Festival



SOUTHERN GREAT BARRIER REEF
1 670 000 Visitors
\$930.8M Expenditure source
(TEQ, SGBR Regional Snapshot, Year Ending June 2014)

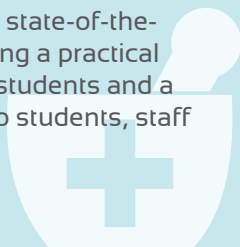
Visitors

Average age 36.6 YEARS

PROJECTED POPULATION BY 2036:
178,522 persons
FITZROY: 359,257 persons,
+ 51 new residents per week

Most highly ranked IN AUSTRALIA FOR AGRICULTURAL RESEARCH
(Ranked 5 - Well Above World Standard)

CQ UNIVERSITY HEALTH CLINIC:
a public access clinic with state-of-the-art health facilities providing a practical learning environment for students and a range of health services to students, staff and the general public.



CQUniversity: Rockhampton is home to Queensland's only comprehensive university following 2014 merger with CQ TAFE.

- Largest university based in regional Australia.
- Awarded the highest possible ranking by Commonwealth Government in Medical and Health Sciences, Agriculture and Applied Mathematics.

(CQUniversity)



Education Economy

42
Primary Schools

8
Secondary Schools

5
Combined Schools

2
Special Schools

69 Early childhood education & care services

79.8%

employment rate for graduates
(national average 68.1%)



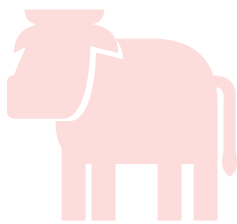


Investment Ready

“Collectively, gas, agribusiness, tourism, international education and wealth management have the potential to be as big as mining.”

Deloitte Growth 25 reasons to be optimistic about growth in Australia.

BEEF



Most valuable agricultural product cattle and calf processing, \$88.2M in 2010-11 (ABS)

JBS Australia, Rockhampton

- daily processing capacity of 696 cattle
- 500 staff

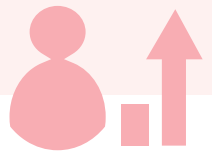
Teys Australia, Rockhampton

- daily processing capacity of 1 731 head
- 900 staff

\$123.3B in Major Projects

7 892 (ABS 8165.0, Counts of Australian Businesses, including Entries and Exits) Registered Businesses

Growing Central Queensland



- Positioning for prosperity
- Developing investment in business and infrastructure
- Opportunities in feedlots, piggeries and horticulture

Regional Development Australia

LARGEST INDUSTRY OF EMPLOYMENT

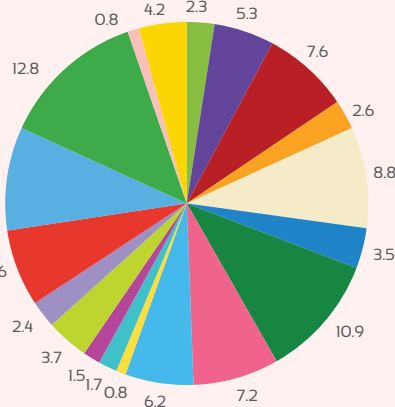
Health care and social assistance

6 369 WORKERS

Rockhampton & Livingstone (Capricorn Coast) Industry of Employment 2011

- Agriculture, Forestry & Fishing
- Mining
- Manufacturing
- Electricity, Gas, Water & Waste Services
- Construction
- Wholesale Trade
- Retail Trade
- Accommodation & Food Service
- Transport, Postal & Warehousing
- Information Media & Telecommunications
- Financial & Insurance Services
- Rental, Hiring & Real Estate Services
- Professional, Scientific & Technical Services
- Administrative & Support Services
- Public Administration & Safety
- Education & Training
- Health Care & Social Assistance
- Arts & Recreation Services
- Other Services

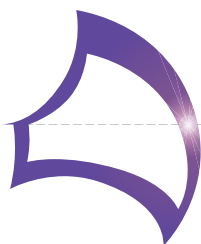
(ABS, Census 2011)



Industrial Precincts

THE GATEWAY - Capricorn Coast's First Integrated Business and Industry precinct strategically positioned, exceptional opportunities.

GRACEMERE INDUSTRIAL AREA (GIA) - strategically positioned, access to transport, infrastructure, services and highly skilled workforce. Zoning for all industrial purposes.



CAPRICORN ENTERPRISE
Region of Innovation

Phone: +61 7 4927 2055
Email: info@capricornenterprise.com.au
capricornenterprise.com.au
capricornholidays.com.au



PUBLISHED MAY 2015