

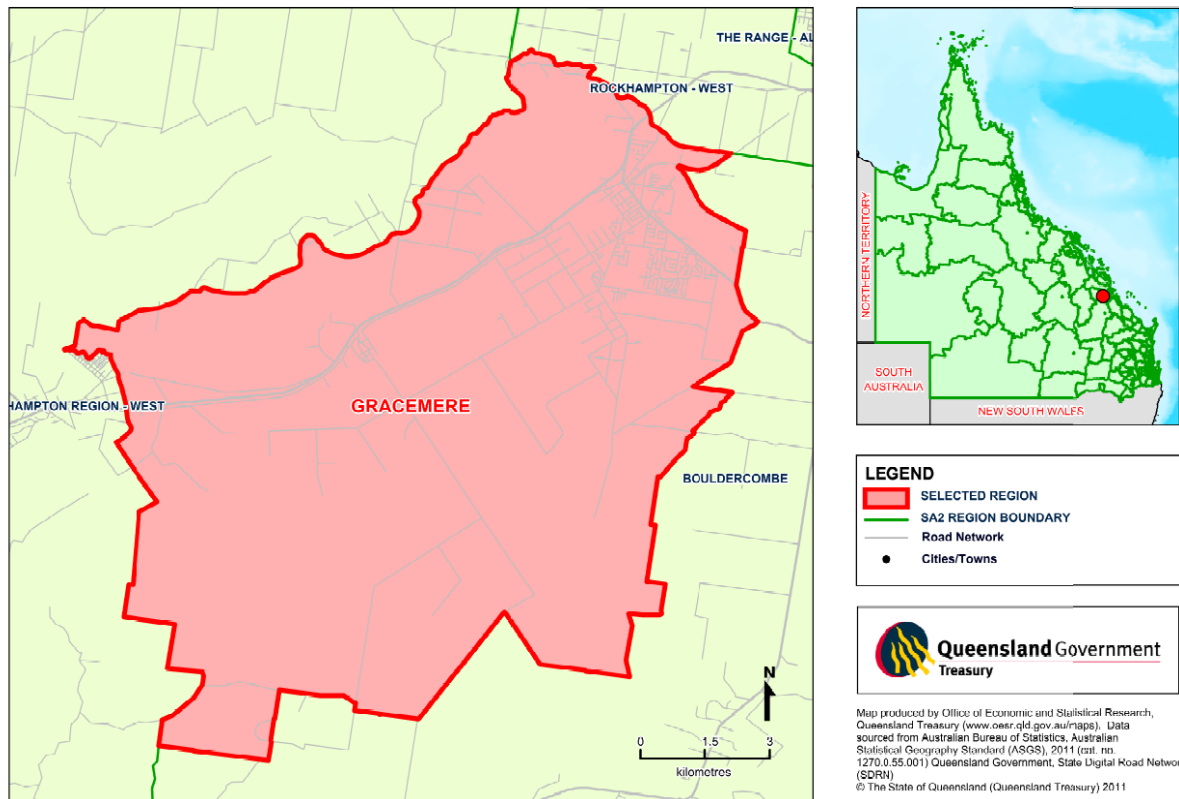
# Gracemere Profile Report



**LIVE-PLAY-WORK-INVEST**

# Gracemere Statistics

Queensland Statistical Areas, Level 2 (SA2), 2011 - Gracemere (ASGS Code 308031210)



Source: Queensland Treasury and Trade, 2011

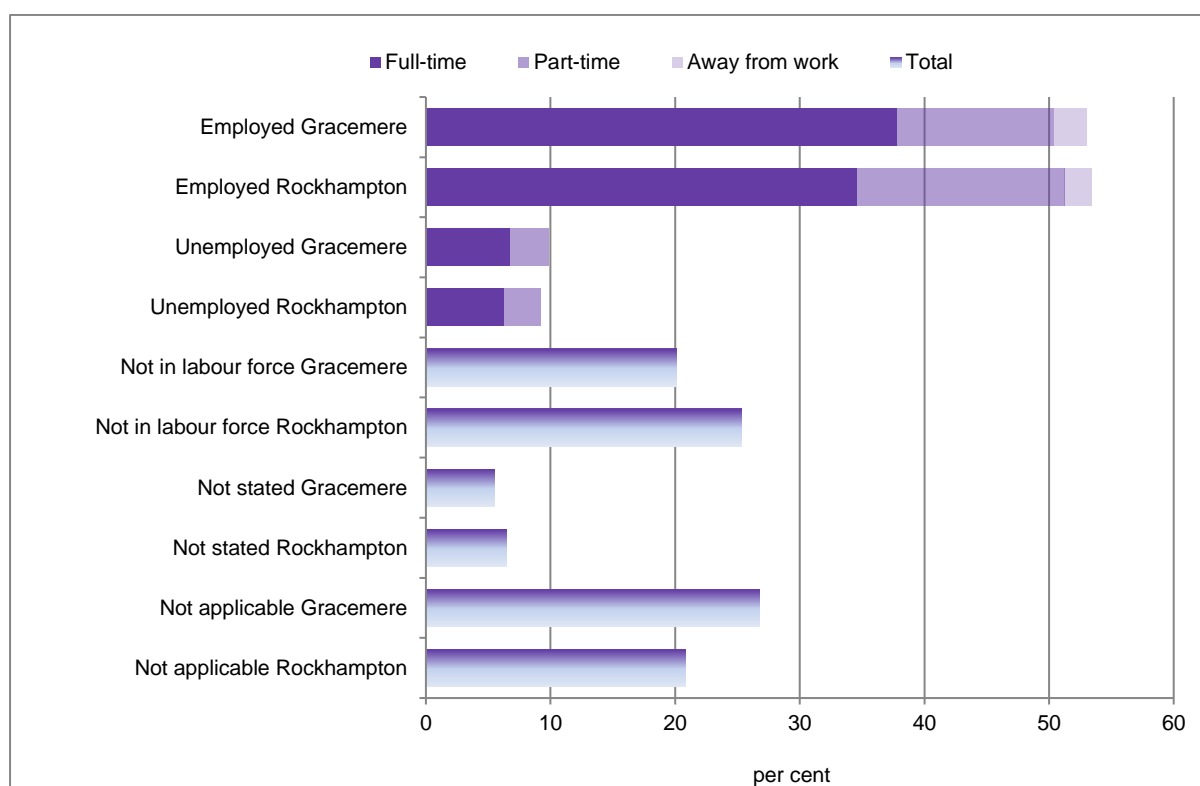
Note: In this document, Rockhampton Regional Council refers to the de-amalgamated local government area which includes the Rockhampton, Mount Morgan and Fitzroy areas. It does not include the Livingstone Shire Council area.

## Employment

Labour force status applies to all people aged 15 years and over. The labour force includes people who are employed full-time, part-time and away from work and those who are unemployed but looking for full-time or part-time work. Of the 11,665 persons counted on Census night, 2016, in Gracemere SA2, 3,126 persons (26.8%) were under the age of 15 years. A further 2,343 persons (20.1%) were not in the labour force. This may be due to age, child rearing, disability, not actively looking for work or other reasons.

Compared to Gracemere SA2, in Rockhampton (R)<sup>1</sup>, which had a population count of 79,726 persons at the time of the 2016 Census, there was a smaller proportion of persons under 15 years (20.8%, 16,576 persons) and a larger proportion not in the labour force (25.4%, 20,213 persons). This may be reflective of the different age profiles of the two areas.

Figure 1 Labour force status (a)(b), Gracemere SA2 and Rockhampton (R), 2016



(a) Employed worked full-time is defined as having worked 35 hours or more in all jobs during the week prior to Census night.

(b) Employed away from work comprises employed persons who did not work any hours in the week prior to Census night.

Source: ABS *Census of Population and Housing, 2016, General Community Profile – G43, G01 and G04*.

Three in five (65.2%) persons 15 years and over in the Gracemere SA2 were in the labour force (5,564 persons) in 2016. In Rockhampton (R), 59.8 per cent of the 15 years and over population were in the labour force (37,790 persons). The labour force of Gracemere was 14.7 per cent of the Rockhampton (R) labour force.

<sup>1</sup> Rockhampton (R) refers to the de-amalgamated council area which does not include the Livingstone Shire Council area.

**Figure 2 Labour force, Gracemere SA2 and Rockhampton (R), 2016**

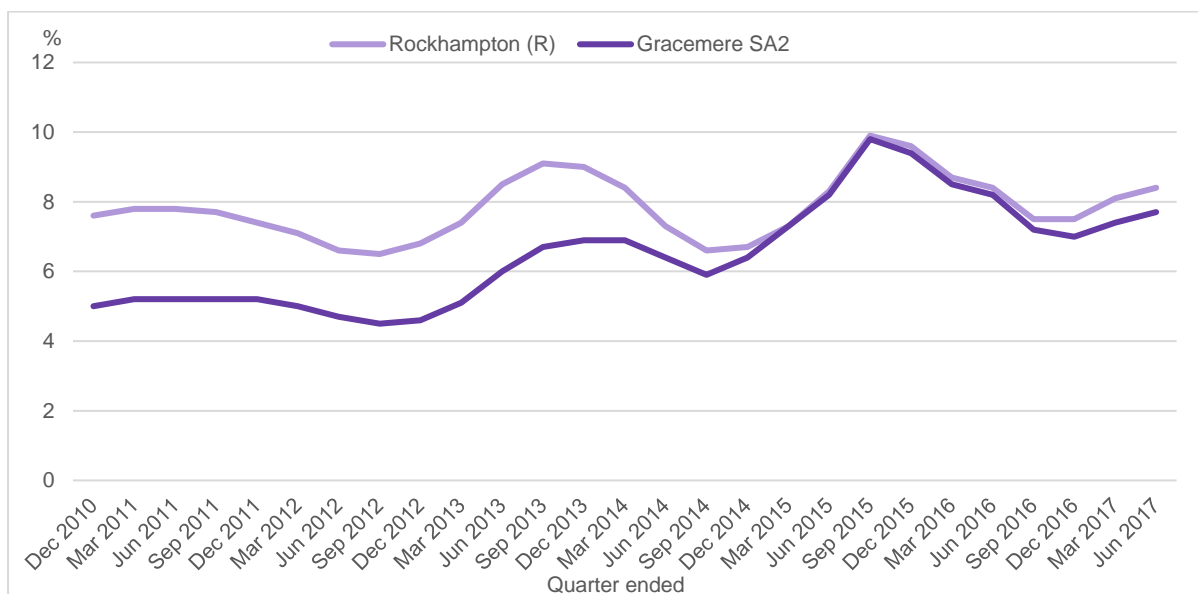


(a) Based on persons aged 15 years and over and by place of usual residence.  
 (b) Employed worked full-time is defined as having worked 35 hours or more in all jobs during the week prior to Census night.  
 (c) Employed away from work comprises employed persons who did not work any hours in the week prior to Census night.  
 Source: ABS Census of Population and Housing, 2016, *General Community Profile – G43*

At the time of the 2016 Census, 9.9 per cent of the Gracemere SA2 labour force stated they were unemployed (550 persons) in comparison to 9.2 per cent of Rockhampton (R) (3,475 persons).

In the June quarter 2017, the unemployment rate in Gracemere SA2 was 7.7%, lower than in Rockhampton (R), 8.4%. Rates were 0.5 percentage points lower than the same quarter 2016 in Gracemere and unchanged in Rockhampton (R).

**Figure 3 Unemployment rate, smoothed, Rockhampton (R) and Gracemere SA2, 2010-2017**



Source: Australian Government Department of Employment, *Small area labour markets Australia*, various editions.

At the time of the 2016 Census, the largest occupational group of employed persons in the Gracemere SA2 area was technicians and trades workers (880 persons), followed by machinery operators and drivers (701 persons) and clerical and administrative workers (680 persons) (Table 1). Larger proportions of Rockhampton (R) residents were managers, professionals and labourers than in Gracemere SA2.

**Table 1 Employed persons (a)(b) by occupation, Gracemere SA2 and Rockhampton (R), 2016**

Occupation (c)	Gracemere SA2		Rockhampton Regional Council area		Region as a proportion of Rockhampton (R)
	number	%	number	%	%
Managers	367	7.3	3,101	9.0	11.8
Professionals	598	11.9	5,517	16.1	10.8
Technicians and Trades Workers	880	17.6	5,657	16.5	15.6
Community and Personal Service Workers	665	13.3	4,249	12.4	15.7
Clerical and Administrative Workers	680	13.6	4,510	13.1	15.1
Sales Workers	515	10.3	3,404	9.9	15.1
Machinery Operators and Drivers	701	14.0	3,093	9.0	22.7
Labourers	541	10.8	4,335	12.6	12.5
Inadequately described/not stated	69	1.4	464	1.4	14.9
<b>Total</b>	<b>5,012</b>	<b>100.0</b>	<b>34,314</b>	<b>100.0</b>	<b>14.6</b>

(a) Based on place of usual residence.

(b) Aged 15 years and over.

(c) Based on Australian Bureau of Statistics, Australian Standard Classification of Occupations, Version 1.2 released in 2013.

Source: Australian Bureau of Statistics, Census of Population and Housing, 2016, *General Community Profile – G57*.

At the time of the 2016 Census, health care and social assistance was the largest employing industry in the Gracemere SA2 area, accounting for 748 (14.9%) of the area's workforce (Table 2). Other significant industries included retail trade (11.1%), mining (9.1%), transport, postal and warehousing (8.9%) and construction (8.0%). A higher proportion of the Rockhampton Regional Council area's mining (26.1%) and transport, postal and warehousing workforce (21.1%) lived in the Gracemere area.

Of the 5,012 workers who lived in Gracemere SA2 at the time of the 2016 Census, four in five (80.1%) worked in Rockhampton (R) while one in five workers lived and worked in the Gracemere SA2 (21.2%). Of the remaining workers who stated where they lived, small numbers worked in elsewhere in Australia (27 persons), with the others worked elsewhere in Queensland (17.5% or 876 persons). Other than the Rockhampton Regional Council, the local government areas with the highest numbers of Gracemere SA2 workers were Banana (S) (64 persons), Central Highlands (R) (244 persons), Gladstone (R) (47 persons), Isaac (R) (153 persons) and Livingstone (S) (99 persons).

**Table 2 Employed persons (a)(b) by industry, Gracemere SA2 and Rockhampton (R), 2011**

Industry (c)	Gracemere SA2		Rockhampton (R)		Region as a proportion of Rockhampton (R)
	number	%	number	%	%
Agriculture, forestry and fishing	90	1.8	698	2.0	12.9
Mining	457	9.1	1,750	5.1	26.1
Manufacturing	192	3.8	2,043	6.0	9.4
Electricity, gas, water and waste services	130	2.6	951	2.8	13.7
Construction	399	8.0	2,476	7.2	16.1
Wholesale trade	179	3.6	1,012	2.9	17.7
Retail trade	554	11.1	3,642	10.6	15.2
Accommodation and food services	341	6.8	2,469	7.2	13.8
Transport, postal and warehousing	448	8.9	2,121	6.2	21.1
Information media and telecommunications	29	0.6	252	0.7	11.5
Financial and insurance services	45	0.9	466	1.4	9.7
Rental, hiring and real estate services	76	1.5	480	1.4	15.8
Professional, scientific and technical services	136	2.7	1,228	3.6	11.1
Administrative and Support Services	118	2.4	908	2.6	13.0
Public Administration and Safety	298	5.9	2,303	6.7	12.9
Education and Training	354	7.1	3,352	9.8	10.6
Health Care and Social Assistance	748	14.9	5,192	15.1	14.4
Arts and Recreation Services	40	0.8	288	0.8	13.9
Other Services	221	4.4	1,505	4.4	14.7
Inadequately described/Not stated	168	3.4	1,168	3.4	14.4
<b>Total</b>	<b>5,012</b>	<b>100.0</b>	<b>34,314</b>	<b>100.0</b>	<b>14.6</b>

(a) Based on usual residence.

(b) Aged 15 years and over.

(c) Based on Australian Bureau of Statistics, Australian and New Zealand Standard Industrial Classification 2006 (Revision 1.0).

Source: Australian Bureau of Statistics, Census of Population and Housing, 2016, *General Community Profile – G51*.

## Economy

### *Business counts*

In the 2015/16 financial year, there were 489 businesses registered in Gracemere SA2, an increase of 2.5 per cent or 12 businesses more than the previous financial year.

Over half (61.1%) of all businesses registered in the Gracemere Statistical Area Level 2 (SA2) were non-employing. More than one-quarter (26.2%) had one to four employees while there were no businesses with more than 200 employees. More than one in ten (13.5%) businesses had between 5 and 19 employees.

The majority of non-employing, or owner operated, businesses were in the agriculture, forestry and fishing industry (68 businesses), followed by construction (51 businesses) and transport, postal and warehousing (39 businesses).

The construction industry had the largest proportion of businesses (22.1%), followed by agriculture, forestry and fishing (16.0%) and transport, postal and warehousing (13.0%).

**Table 3 Business counts by employment size, Gracemere SA2, 2015/16**

	No. of employees					Total
	Non employing	1-4	5-19	20-199	200+	
Accommodation and Food Services	3	3	6	3	0	11
Administrative and Support Services	11	10	0	0	0	19
Agriculture, Forestry and Fishing	68	4	3	0	0	78
Arts and Recreation Services						
Construction	51	39	12	3	0	108
Education and Training	3	3	0	0	0	3
Electricity, Gas, Water and Waste Services	3	3	0	0	0	4
Financial and Insurance Services	21	0	0	0	0	21
Health Care and Social Assistance	6	4	3	0	0	18
Information Media and Telecommunications	0	3	0	0	0	3
Manufacturing	16	4	5	0	0	21
Mining	0	0	3	0	0	4
Other Services	17	13	9	0	0	40
Professional, Scientific and Technical Services	13	4	3	0	0	20
Public Administration and Safety	3	0	0	0	0	3
Rental, Hiring and Real Estate Services	24	4	3	0	0	26
Retail Trade	9	5	8	0	0	27
Transport, Postal and Warehousing	39	23	8	0	0	64
Wholesale Trade	6	3	3	0	0	9
Not classified	3	0	0	0	0	3
<b>Total</b>	<b>299</b>	<b>128</b>	<b>66</b>	<b>6</b>	<b>0</b>	<b>489</b>

Source: ABS, *Counts of Australian Businesses, including Entries and Exits*, various editions, cat. no. 8165.0

Less than one quarter (23.7%) of all businesses in Gracemere SA2 had a turnover of less than \$50,000 in the financial year 2015/16. A further 18.8 per cent had a turnover between \$50,000 and \$100,000. Businesses earning more than \$2 million accounted for 4.1 per cent of Gracemere SA2 businesses.

Agriculture, forestry and fishing had the largest number of businesses with a turnover of less than \$50 thousand, followed by transport, postal and warehousing and construction.

The construction industry had the largest number of businesses earning more than \$2 million, followed by transport, postal and warehousing.

**Table 4 Business Counts by turnover range, Gracemere SA2, 2015/16**

	Turnover range (\$)					
	0 to less than 50k	50k to less than 100k	100k to less than 200k	200k to less than 500k	500k to less than 2m	2m or more
Accommodation and Food Services	0	3	3	3	3	0
Administrative and Support Services	6	7	3	3	0	0
Agriculture, Forestry and Fishing	41	14	12	9	5	0
Arts and Recreation Services	3	3	0	3	0	0
Construction	13	16	28	17	21	8
Education and Training	3	0	0	3	0	0
Electricity, Gas, Water and Waste Services	0	0	0	3	0	0
Financial and Insurance Services	15	3	3	3	0	0
Health Care and Social Assistance	3	0	3	10	3	
Information Media and Telecommunications	0	0	3	0	0	0
Manufacturing	0	5	11	4	4	0
Mining	0	0	0	0	3	0
Other Services	4	7	5	5	7	3
Professional, Scientific and Technical Services	5	9	3	3	0	0
Public Administration and Safety	0	3	0	0	0	0
Rental, Hiring and Real Estate Services	6	3	8	4	3	0
Retail Trade	4	5	3	3	6	3
Transport, Postal and Warehousing	10	11	8	20	10	3
Wholesale Trade	3	0	3	0	3	3
Not Classified	0	3	0	0	0	0
<b>Total</b>	<b>116</b>	<b>92</b>	<b>96</b>	<b>93</b>	<b>68</b>	<b>20</b>

Source: ABS, *Counts of Australian Businesses, including Entries and Exits*, various editions, cat. no. 8165.0

### **Building approvals**

In the quarter ending September 2017, the value of building approvals for new houses in Gracemere SA2 accounted for approximately one-fifth (20.7%) of all new approvals' value in the Rockhampton (R) area. The value of non-residential building approvals in Gracemere SA2 was generally a small proportion of the Rockhampton (R) total.



**Table 5 Value of residential and non-residential building approvals, Rockhampton (R) and Gracemere SA2**

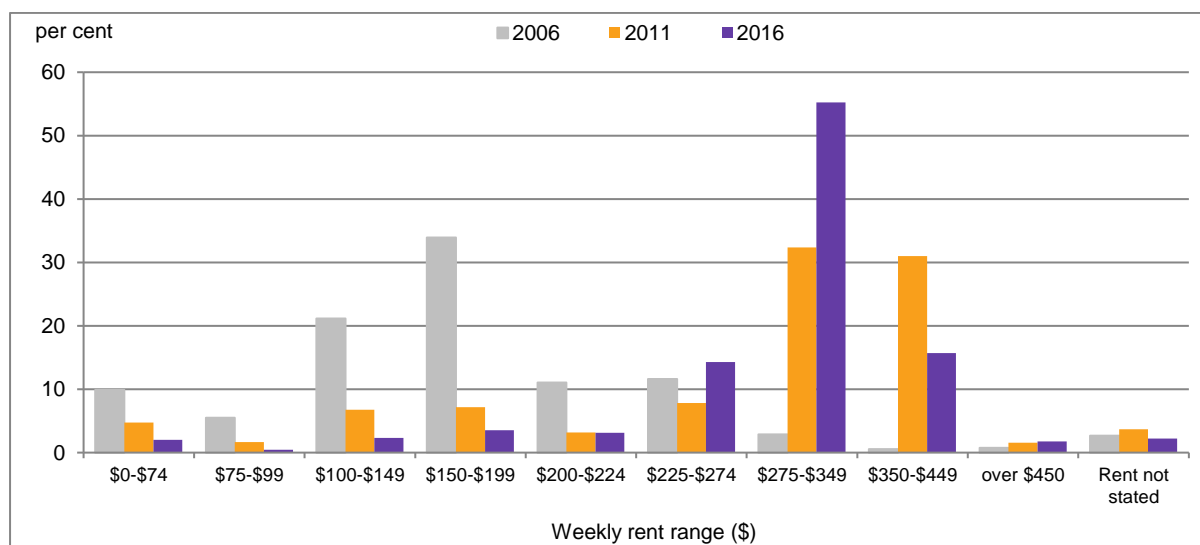
Quarter ended	Residential building value						Non-residential building value (\$000)	
	New Houses (\$000)		New Other residential building (\$000)		Alterations, additions and conversions (\$000)		Rockhampton (R)	Gracemere SA2
	Rockhampton (R)	Gracemere SA2	Rockhampton (R)	Gracemere SA2	Rockhampton (R)	Gracemere SA2		
Mar 14	22,594	3,647	5,792	0	4,821	407	8,027	0
Jun 14	29,671	2,672	445	0	2,477	299	17,253	50
Sep 14	29,137	3,484	1,425	260	2,428	248	11,480	250
Dec 14	20,380	5,482	2,837	0	2,522	331	52,544	0
Mar 15	9,321	1,703	1,114	0	1,818	118	2,783	297
Jun 15	12,998	1,873	2,700	260	5,060	345	22,420	0
Sep 15	17,063	3,454	1,602	0	5,127	256	20,733	1415
Dec 15	19,076	5,810	729	0	6,260	321	13,966	561
Mar 16	14,939	2,938	0	0	4,664	314	35,273	769
Jun 16	15,053	2,206	3,630	0	2,968	604	6,440	0
Sep 16	15,549	3,418	875	0	3,184	329	6,539	50
Dec 16	15,470	6,192	0	0	3,133	313	17,733	1545
Mar 17	14,834	4,727	10,500	0	3,170	422	27,954	100
Jun 17	11,982	3,113	0	0	4,571	147	6,905	0
Sep 17	13,083	2,709	900	0	2,293	402	10,375	1538

Source: ABS, *Building Approvals, Australia, various editions, cat. no. 8731.0*

### Weekly rents

Although rental values do not compare directly across time because of inflation, it is interesting to note changes in ranges. More than one-third (36.6%) of renters in Gracemere SA2 in 2006 paid less than \$150 rent per week, while in 2016, the proportion of renters paying this amount was 4.8 per cent. More than half (55.2%) of renters paid between \$275 and \$349 per week in 2016.

**Figure 4 Weekly rent (a), Gracemere, 2006-2016**



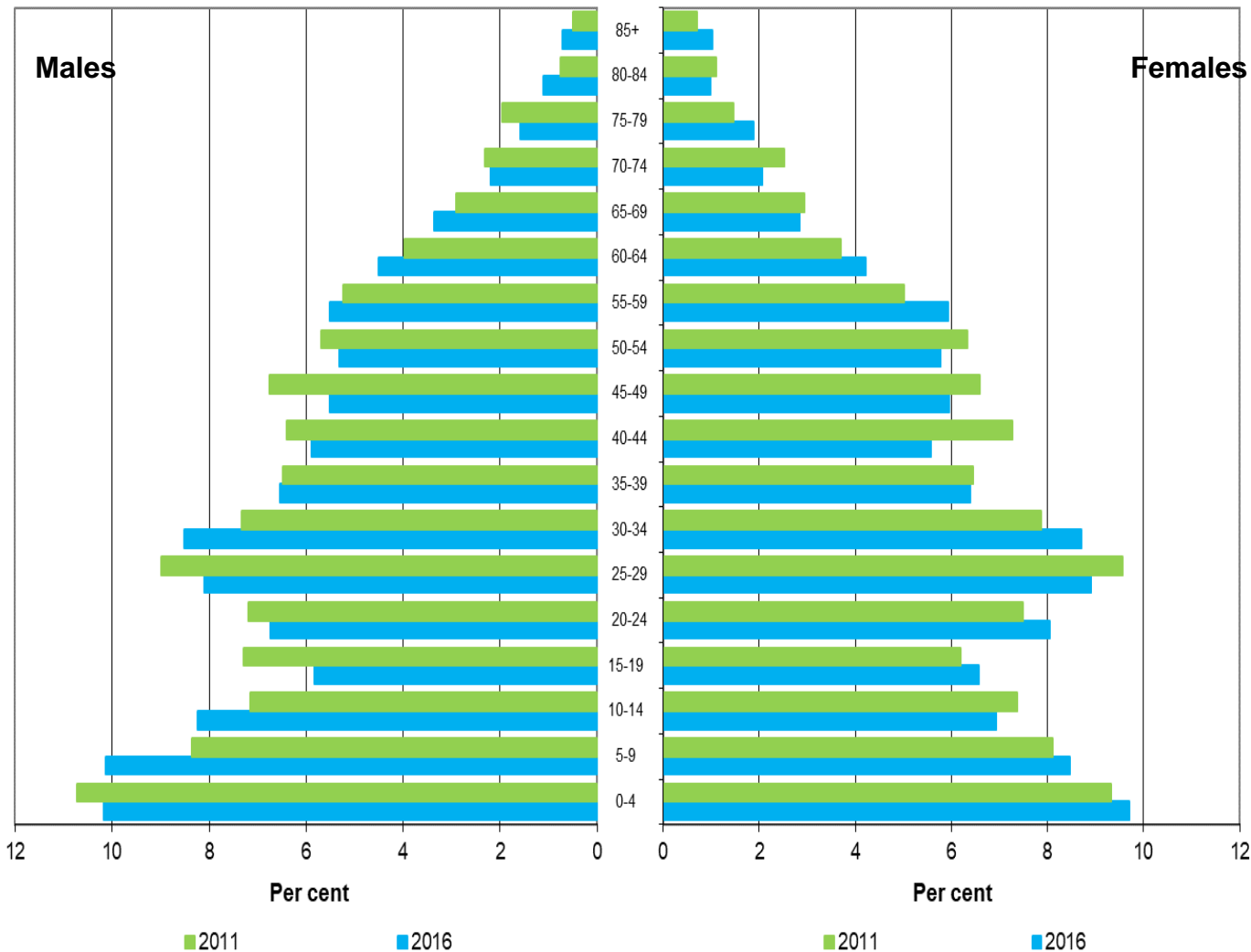
(a) Count of private dwelling being rented, including dwelling occupied rent-free.

Source: ABS, *Census of Population and Housing, 2016, Time Series Profile – T19.*

## Population

The Gracemere SA2 exhibits a relatively young profile in the population pyramid, as represented by the larger proportions of younger persons in comparison to older persons. While there has been some balancing of the proportions of persons in different age groups between 2011 and 2016, Gracemere continues to have a larger proportion of children. It also continues to higher percentages of adults in the 25 to 34 year old age groups, possibly reflecting Gracemere’s position as an affordable location for young families.

Figure 5 Population pyramid (a), age by sex, Gracemere SA, 2011-2016

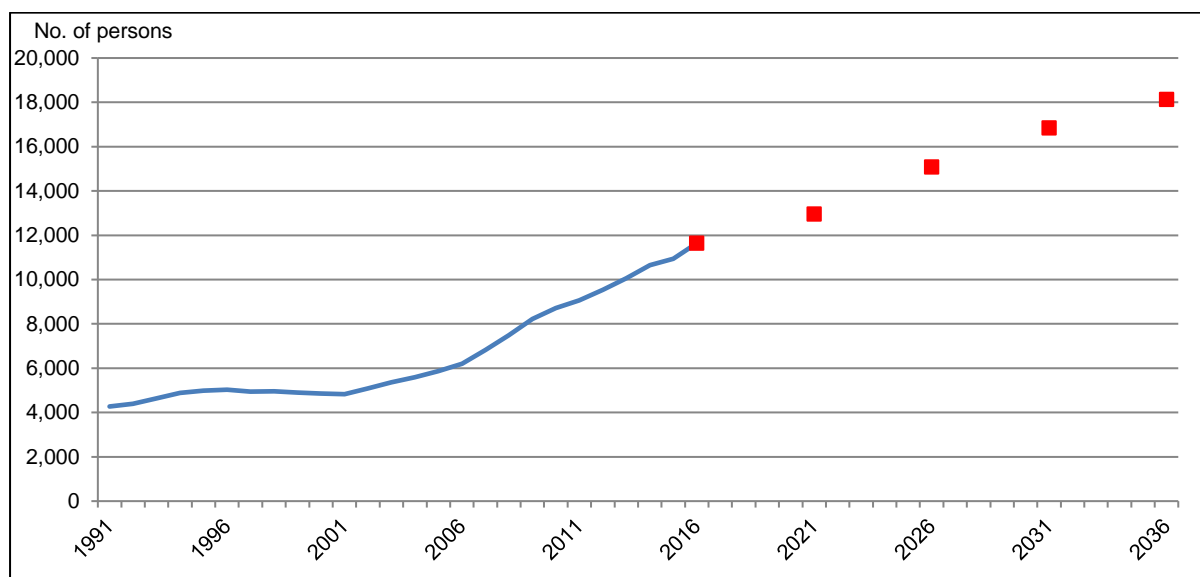


(a) Based on place of usual residence.

Source: ABS, Census of Population and Housing, 2016, *Time Series Profile – T03*

Gracemere SA2 experienced high growth rates between 2011 and 2016, with an average annual increase of 5.8 per cent. This is significantly higher than the average annual growth rate in Rockhampton (R) of 0.7 per cent. Gracemere is projected to continue to have higher average annual growth rates than Rockhampton (R), 2.8 per cent compared to 1.1 per cent respectively in the years to 2036.

Figure 6 Actual and projected population (medium series), Gracemere SA2, 1991-2036



Source: ABS, *Regional Population Growth, Australia, 2011*, cat. no. 3218.0 and unpublished data. Queensland Treasury and Trade, *Queensland Government Population Projections, 2015 edition* (medium series).

## Education

Of persons aged 15 years and over in Gracemere SA2 at the time of the 2016 Census, 52.0 per cent (4,439 persons) held a non-school educational qualification, compared with 52.6 per cent (33,184 persons) in Rockhampton (R) (Table 6). In Gracemere SA2, a higher proportion of people held certificates than in Rockhampton (R).

Table 6 Non-school qualifications (a), Capricorn Region, 2016

Educational qualification	Gracemere SA2	Rockhampton (R)	Region as a % of Rockhampton (R)
	— persons —		%
Bachelor degree or higher	727	7,488	9.7
Advanced diploma and diploma	529	3,807	13.9
Certificate	2,277	14,396	15.8
<b>Total (b)</b>	<b>4,439</b>	<b>33,184</b>	13.4
Persons 15 years and over	8,539	63,150	13.5
Proportion with qualifications	52.0	52.6	..

.. = not applicable

(a) Persons aged 15 years and over and based on place of usual residence.

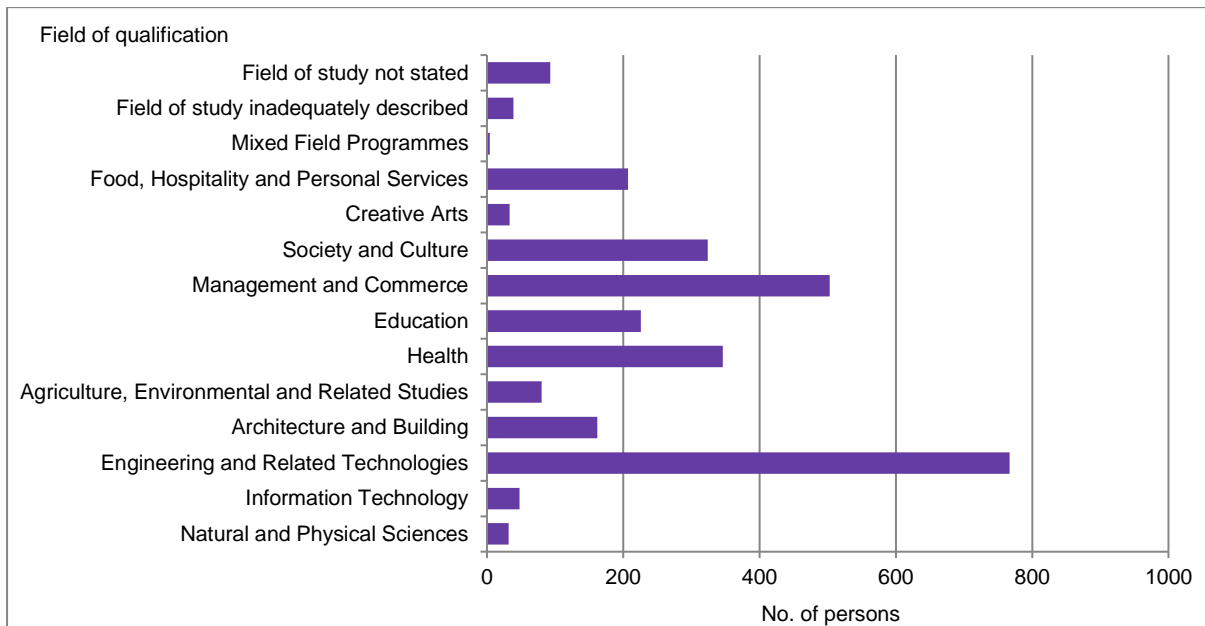
(b) Includes inadequately described and not stated responses.

Source: Australian Bureau of Statistics, Census of Population and Housing, 2016, *General Community Profile – G16*.

In the Gracemere SA2 at the time of the 2016 Census, the most common field of qualification was in engineering and related technologies (26.8%) (Figure 7). This was also the most popular field of study for Rockhampton (R) (23.1%).

Management and commerce was the second most popular field of study for Gracemere SA2 (17.5%), followed by health (12.1%).

**Figure 7 Field of educational qualifications (a), Gracemere SA2, 2016**



(a) Persons aged 15 years and over with a qualification and based on place of usual residence.

Source: ABS, Census of Population and Housing, 2016, *General Community Profile –G47*.