

LOWER FITZROY RIVER

INFRASTRUCTURE PROJECT



LOWER FITZROY RIVER

INFRASTRUCTURE PROJECT

Outline

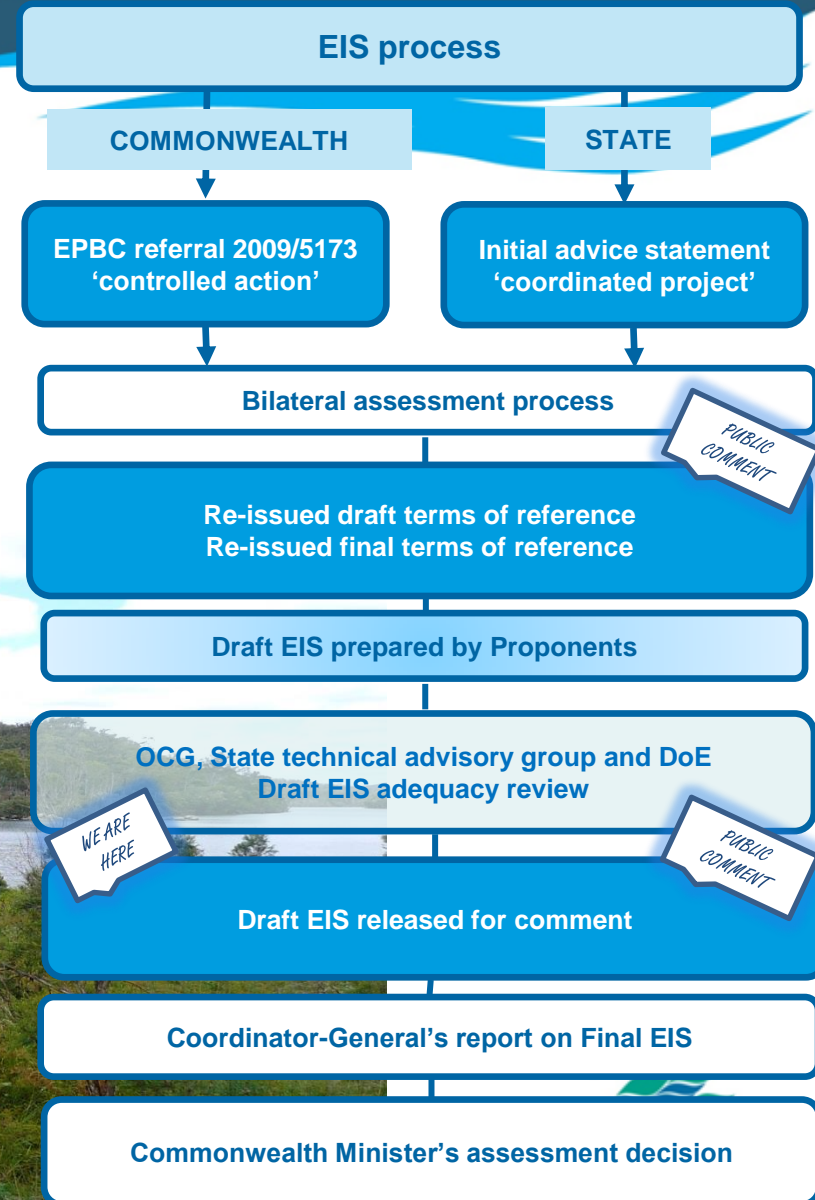
- Project location and description
- Regional water supply
- EIS process
- Water supply development (storage, yield and cost)



LOWER FITZROY RIVER INFRASTRUCTURE PROJECT

EIS process

- Commonwealth *Environment Protection and Biodiversity Conservation Act 1999*
 - Project is a 'controlled action'
 - World Heritage properties
 - National Heritage properties
 - Listed threatened species and communities
 - Listed migratory species
- Queensland *State Development and Public Works Organisation Act 1971*
 - 'coordinated project'
- Draft EIS
 - Volume 1 State
 - Volume 2 MNES
 - Volume 3 Appendices



LOWER FITZROY RIVER

INFRASTRUCTURE PROJECT

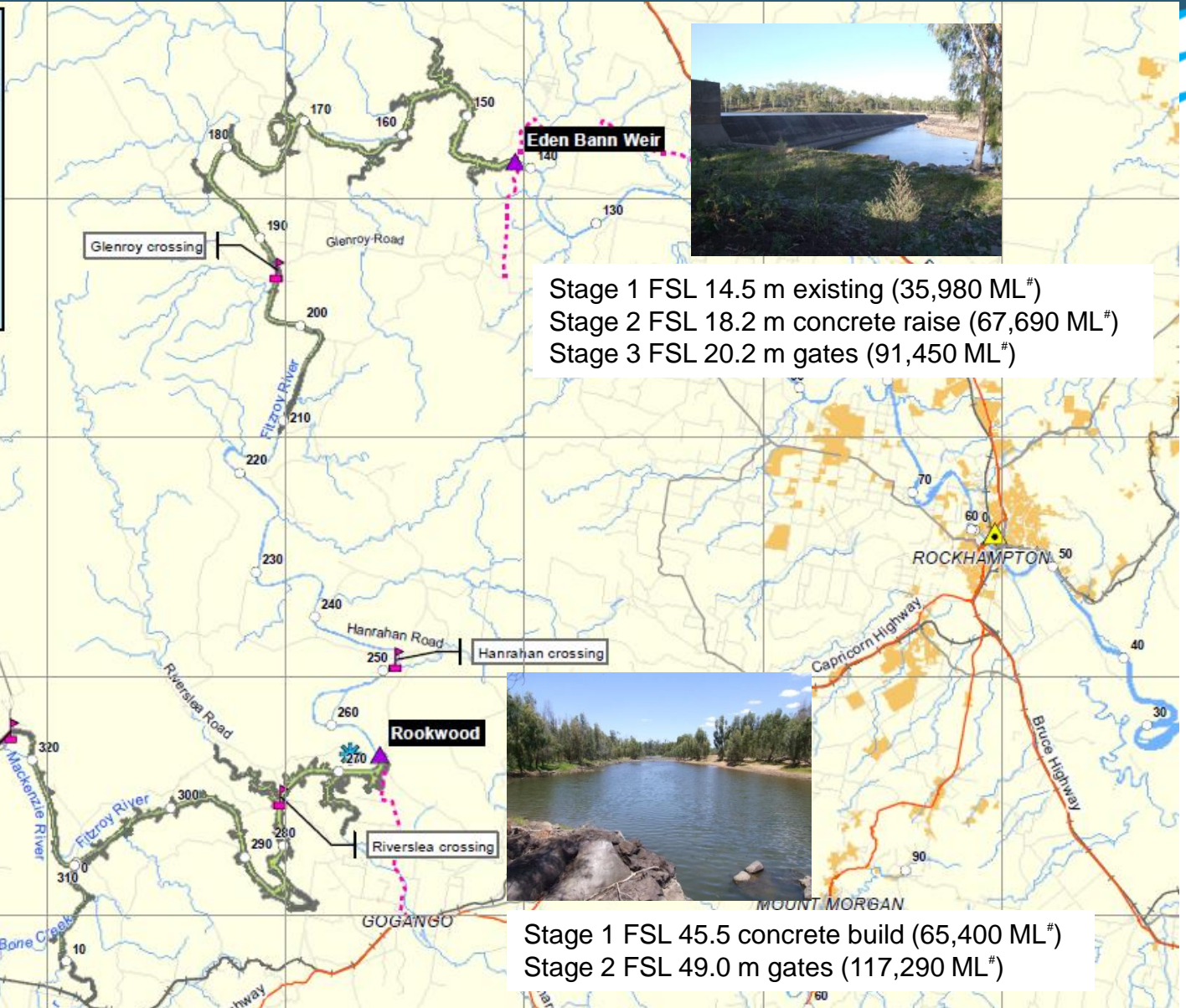
Regional water supply

- Central Queensland Regional Water Supply Strategy 2006
- Water Resource (Fitzroy Basin) Plan 2011
 - Strategic water infrastructure reserve (nominal volume 76,000 ML)
- Fitzroy Basin Resource Operations Plan
 - (a) Gladstone Area Water Board: up to 30,000 ML of the reserve for urban and industrial water supplies
 - (b) A local government authority: up to 4,000 ML of the reserve for urban water supplies for the Capricorn Coast
 - (c) A person or entity for up to the remaining 42,000 ML of the reserve.



LOWER FITZROY RIVER INFRASTRUCTURE PROJECT

storage capacity - - - access roads * saddle dam



LOWER FITZROY RIVER INFRASTRUCTURE PROJECT

Water supply development

Infrastructure	Storage ¹ (ML)	Theoretical yield ² (ML/a)	Capital cost ³ (AU\$M)	Total cost ⁴ (AU\$M)
Fitzroy Barrage (existing)	81,300	50,000	n/a	n/a
EB1 (existing)	35,980	24,000	n/a	n/a
EB2 (intermediate)	67,690	35,000	123	203
EB3 (upper limit)	91,450	50,000	151	234
RW1 (intermediate)	65,400	54,000	154	232
RW2 (upper limit)	117,290	86,000	177	261
LFRIP (EB3+RW2)	208,740	110,000	328	495

1 Total storage including 'dead storage'

2 Potential maximum yield achieved for the development scenario as high priority supplemented supply

3 Based on preliminary design with an accuracy of ± 30 per cent capital costs (as at March 2014) for the weirs (calculated as standalone developments, for example, the cost of building EB3 is reported as the cost of going straight to EB3. Incremental staging costs are additional.)

4 Capital costs plus cost estimates for environmental treatment, management and offsets as well as land and property acquisition and compensation for injurious affection) (as at March 2014) (calculated as standalone staged developments).

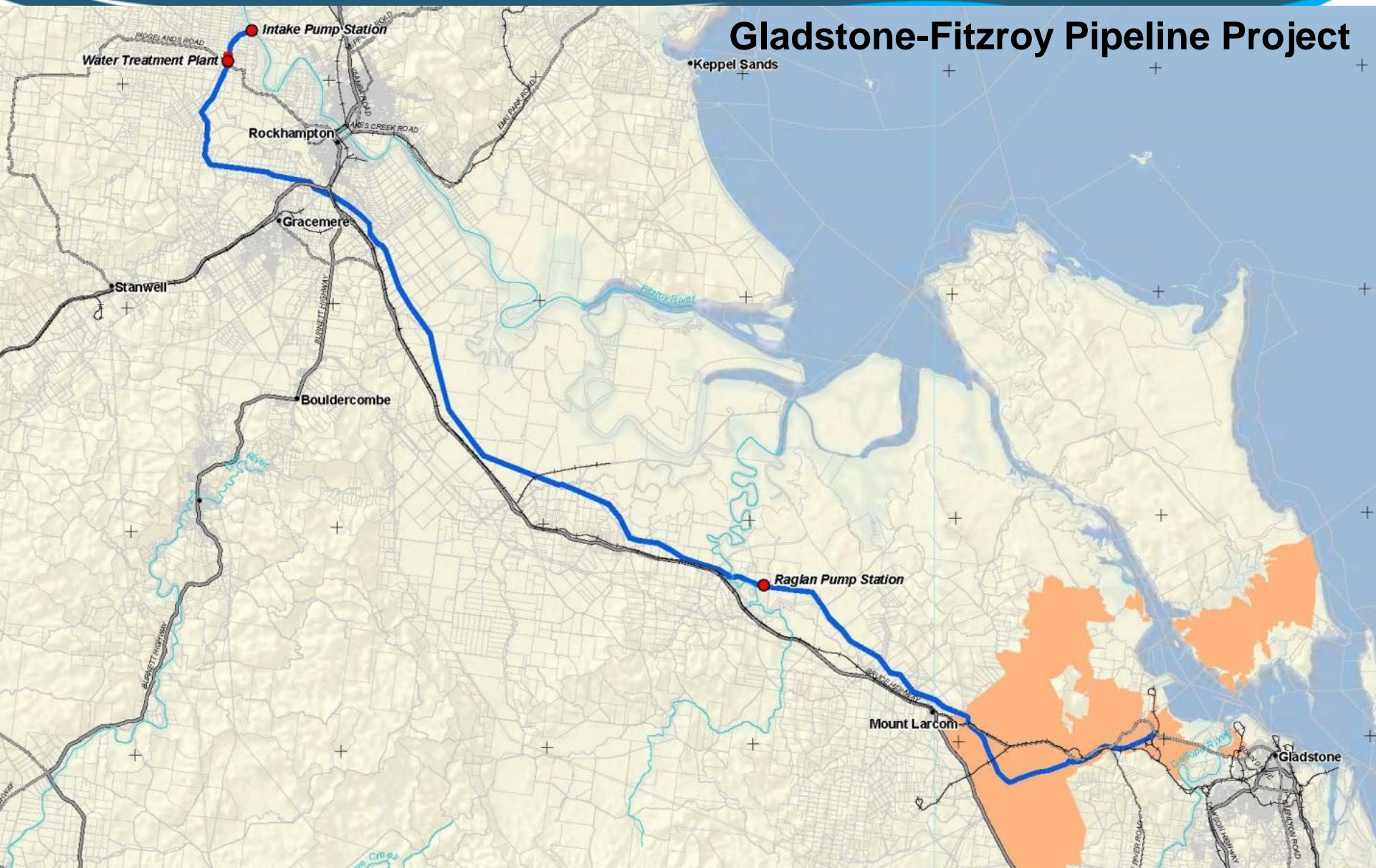
If built in incremental stages, incremental costs increase due to remobilisation of the project will be incurred.



LOWER FITZROY RIVER

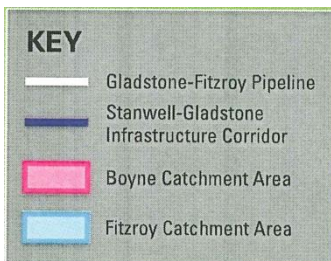
INFRASTRUCTURE PROJECT

Gladstone-Fitzroy Pipeline Project



LOWER FITZROY RIVER INFRASTRUCTURE PROJECT

Gladstone-Fitzroy Pipeline Project



LOWER FITZROY RIVER

INFRASTRUCTURE PROJECT

Thank you

