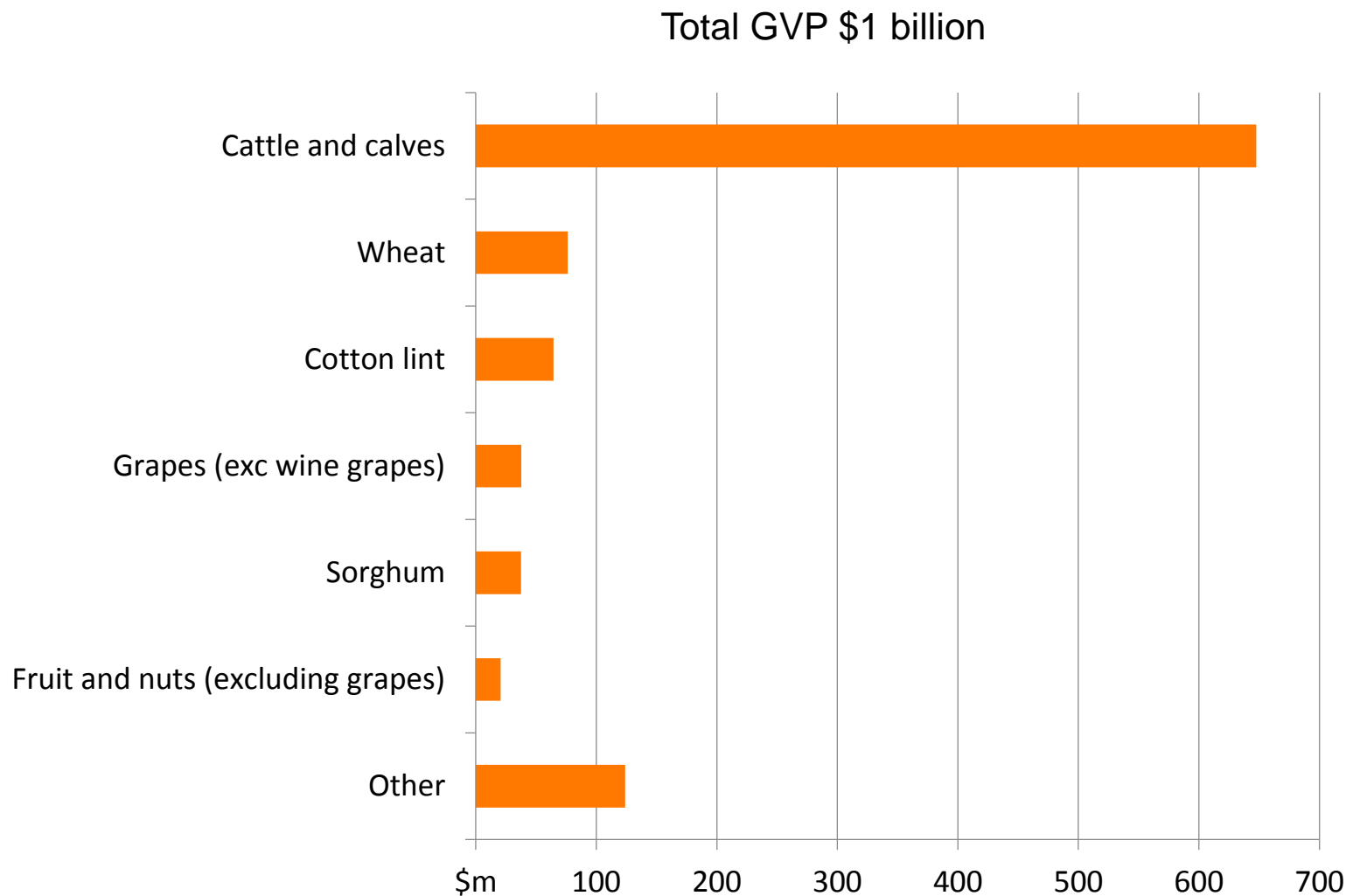


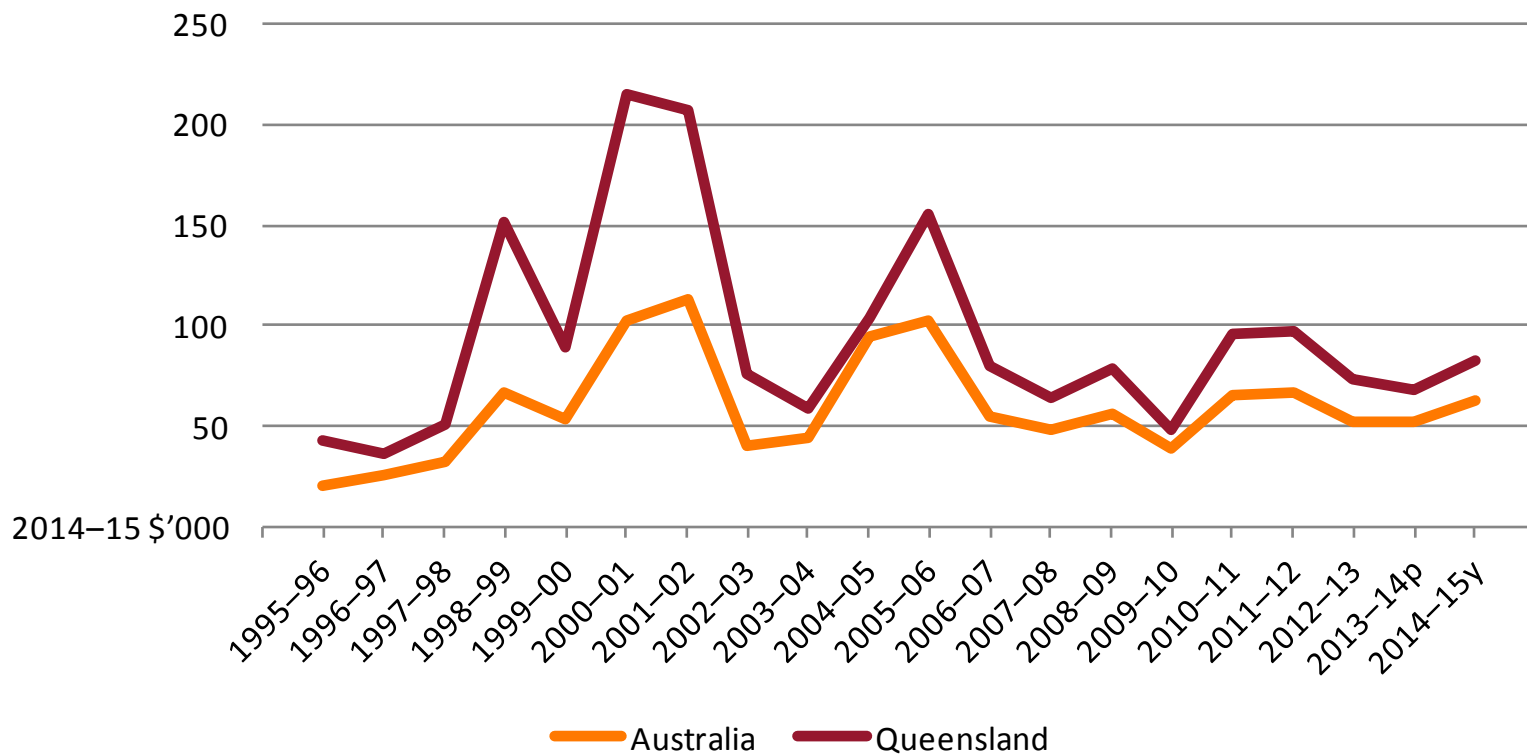


# Value of selected agricultural commodities

Fitzroy Region, 2012-13

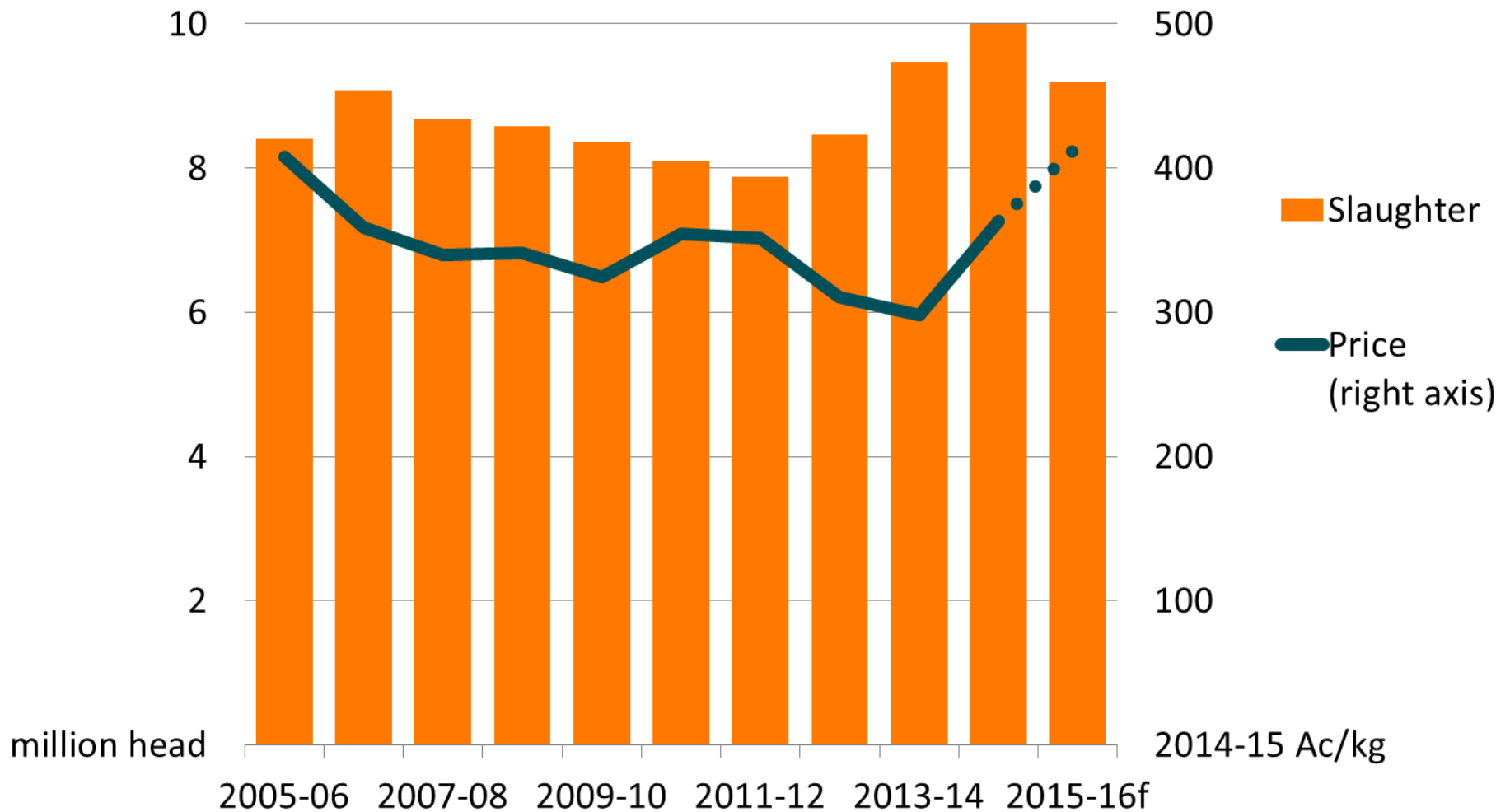


# Real farm cash income, beef industry average per farm

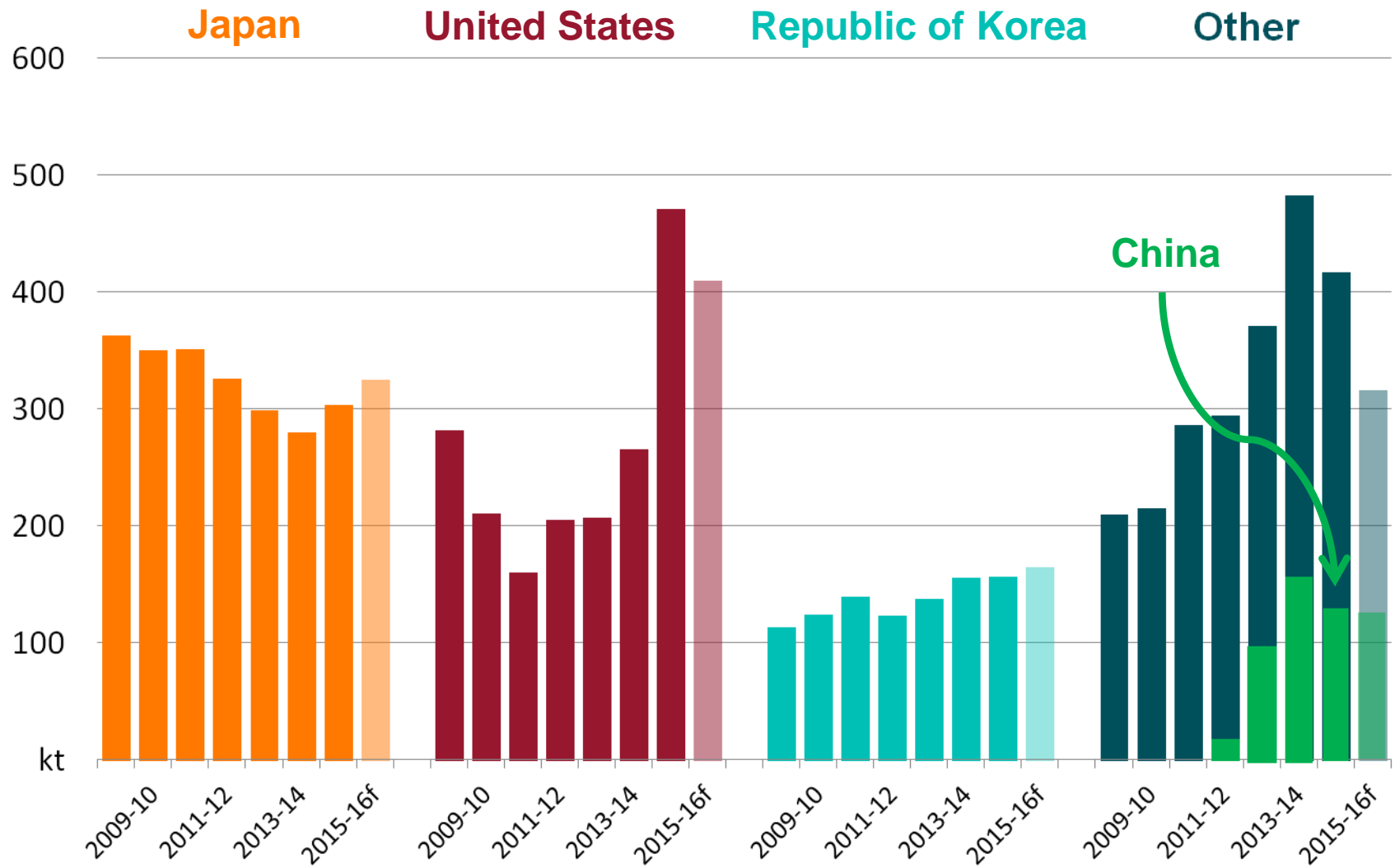


y Provisional estimate.

# Australian beef cattle

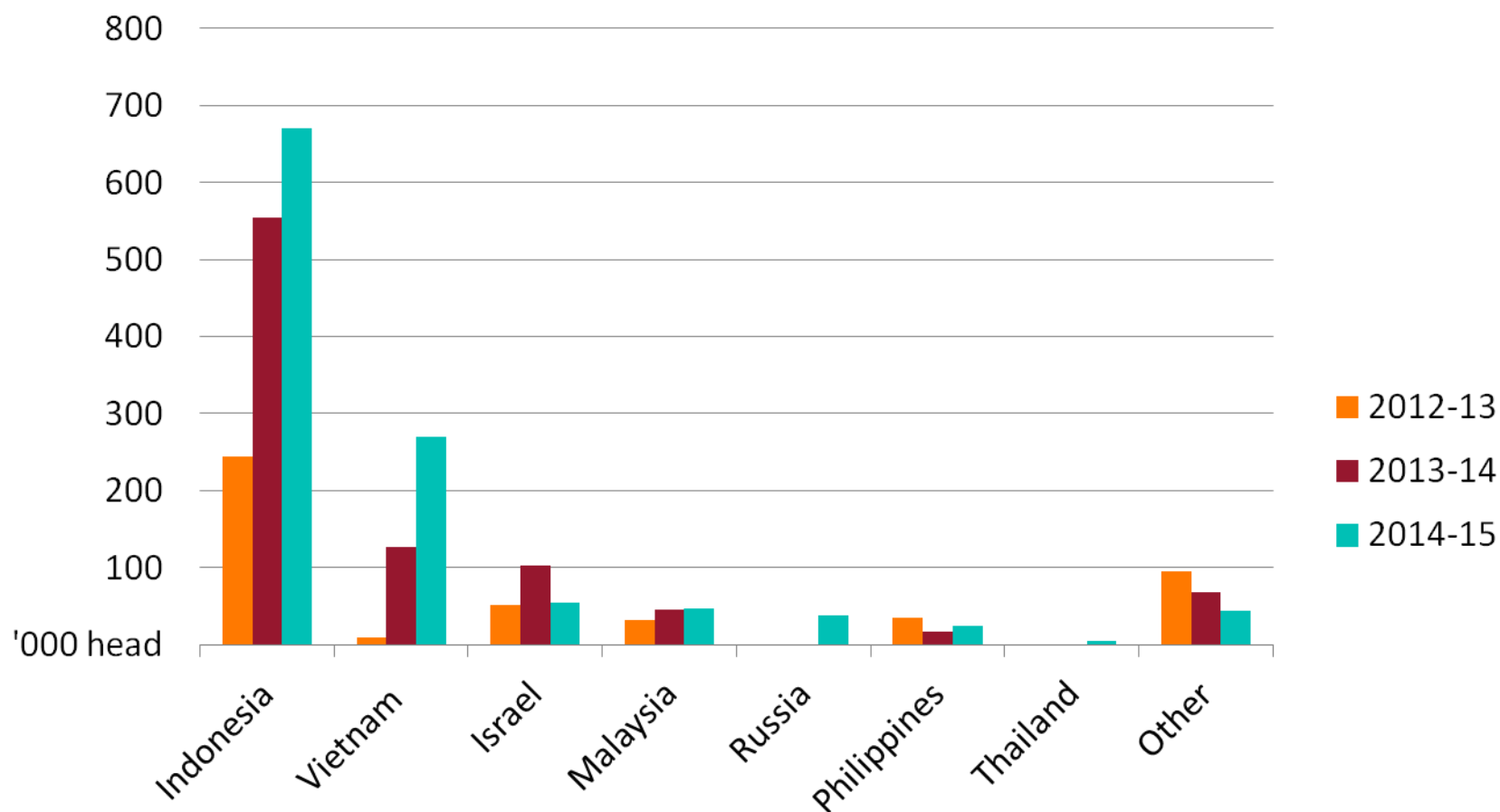


# Beef exports

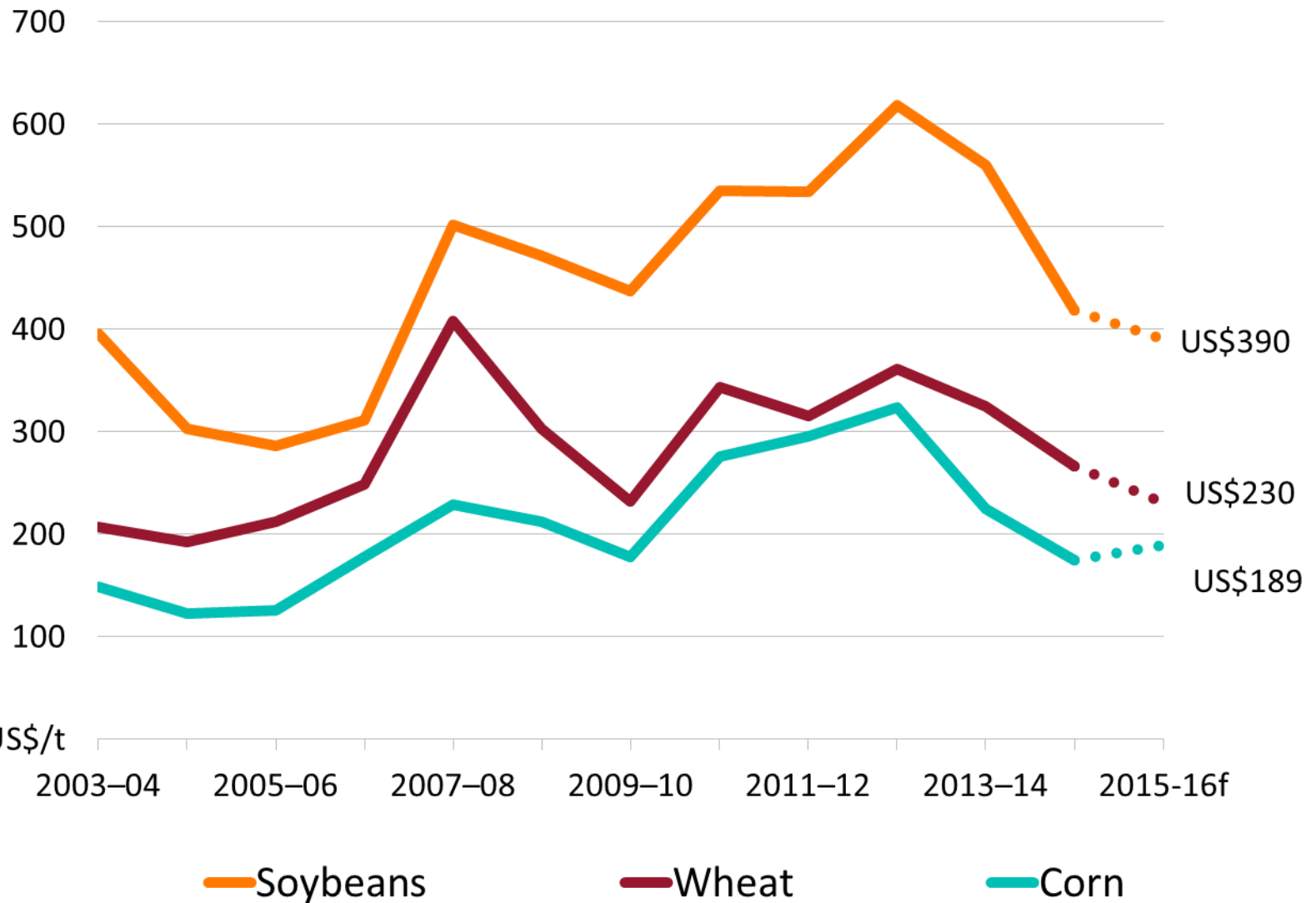


# Live cattle exports

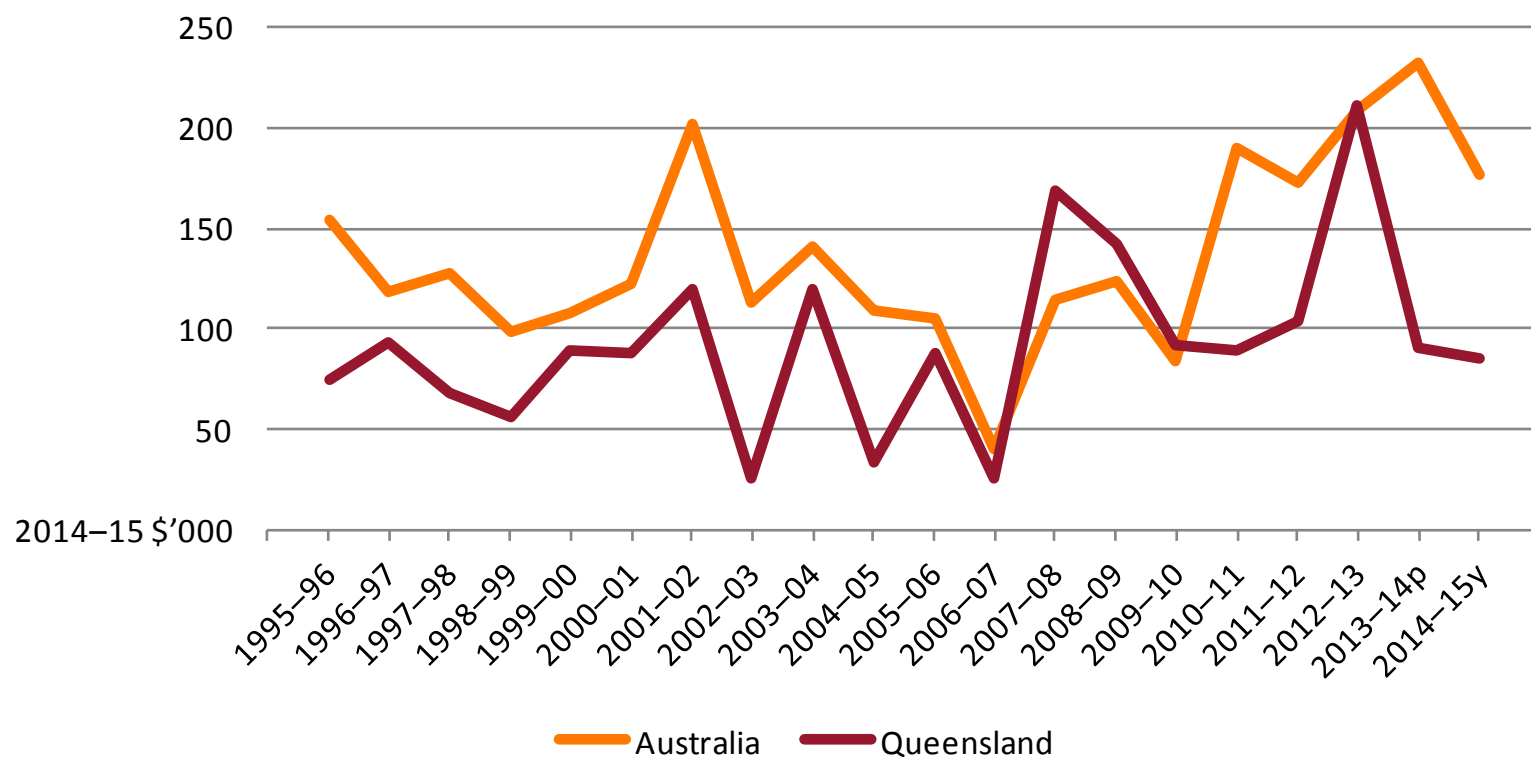
11 months to May



# World grains and oilseeds indicator prices



# Real farm cash income, grains industry average per farm



y Provisional estimate.

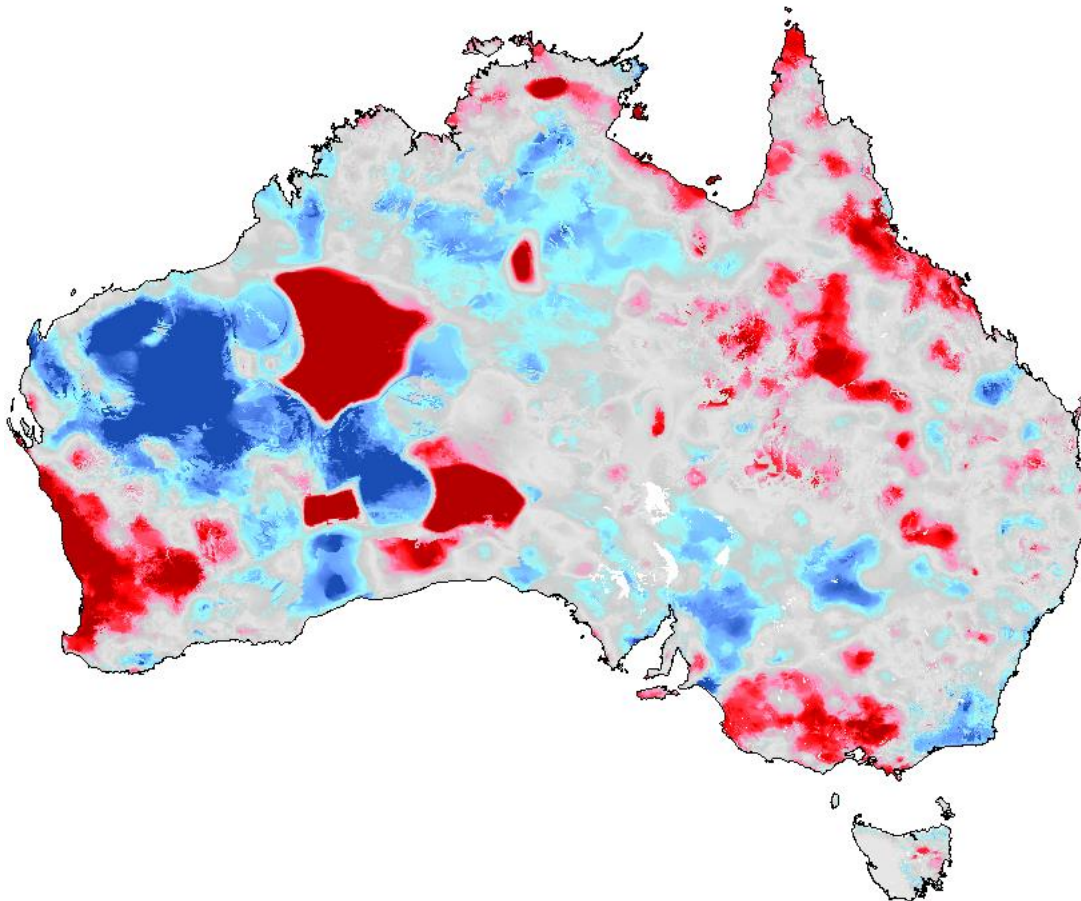


# Lower layer soil moisture

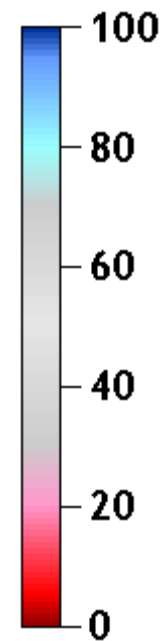
13-19 July 2015

Percent Rank Relative Soil Moisture (Lower Layer) [%]

2015/07/13 to 2015/07/19



Relative soil moisture percentiles

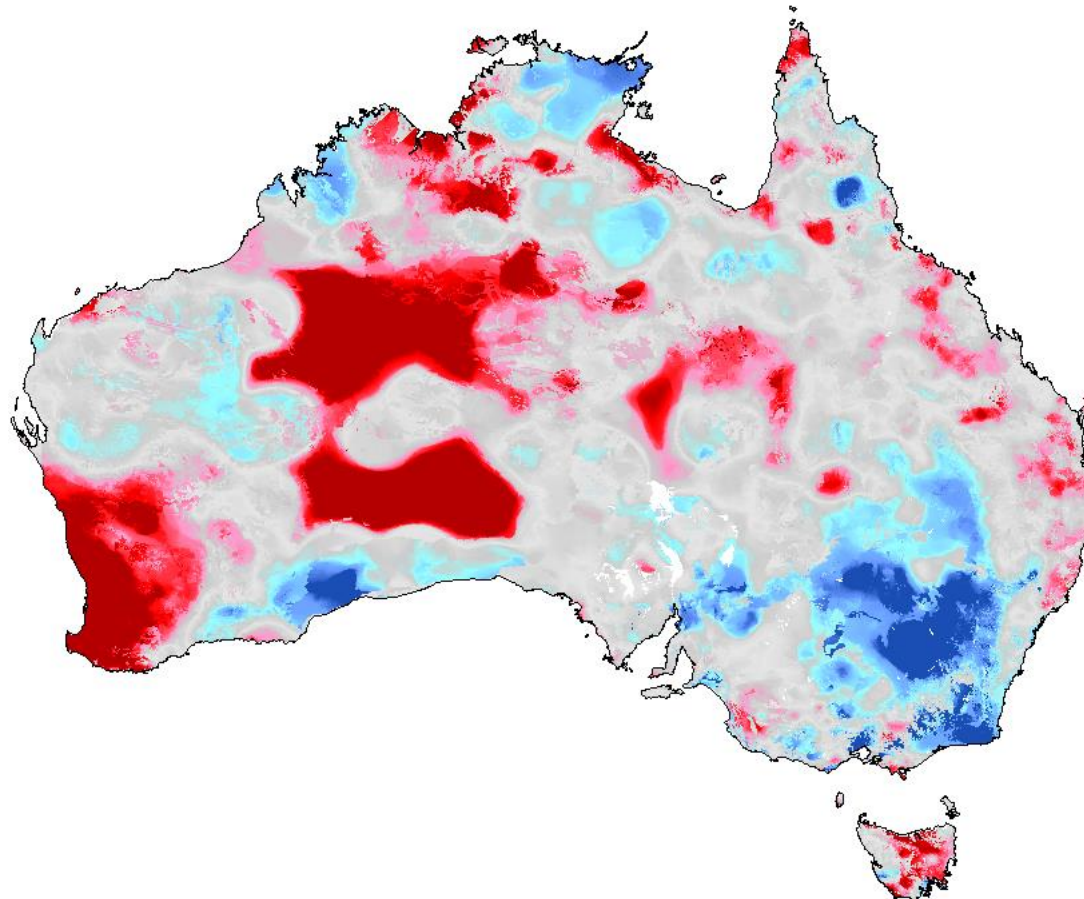


# Upper layer soil moisture

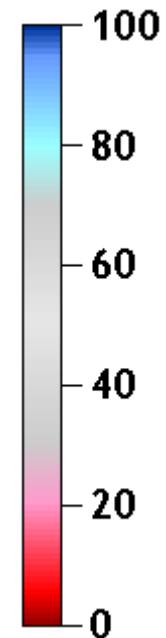
13-19 July 2015

Percent Rank Relative Soil Moisture (Upper Layer) [%]

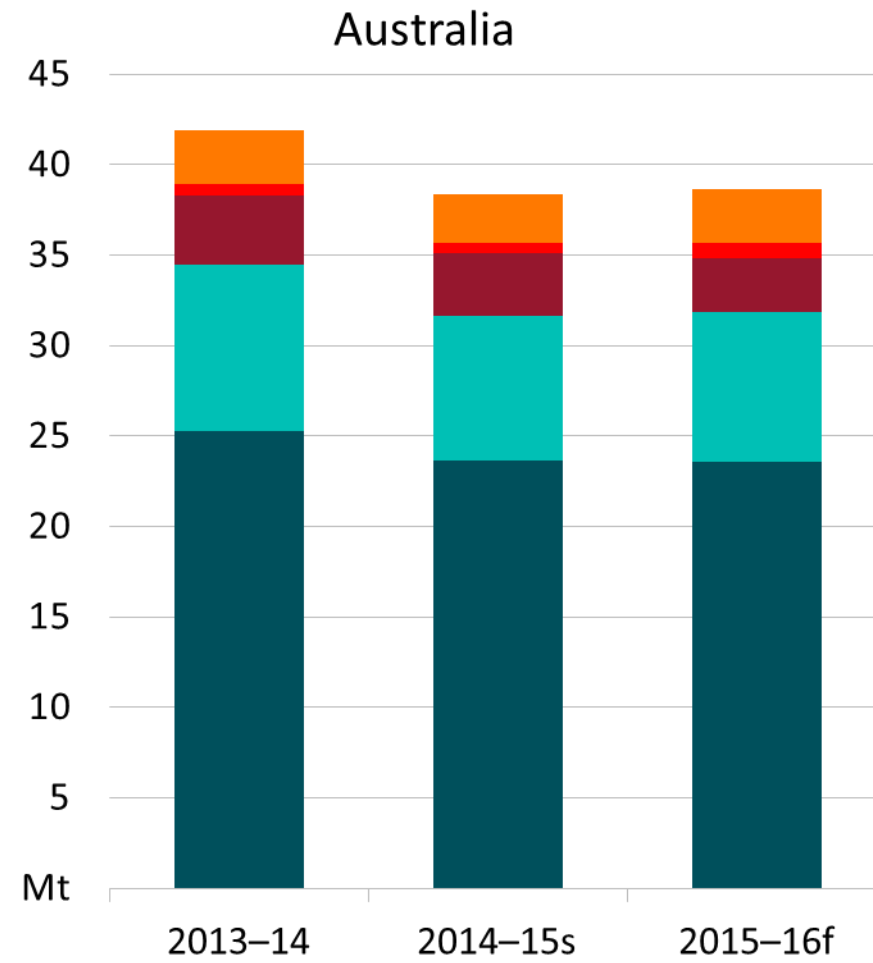
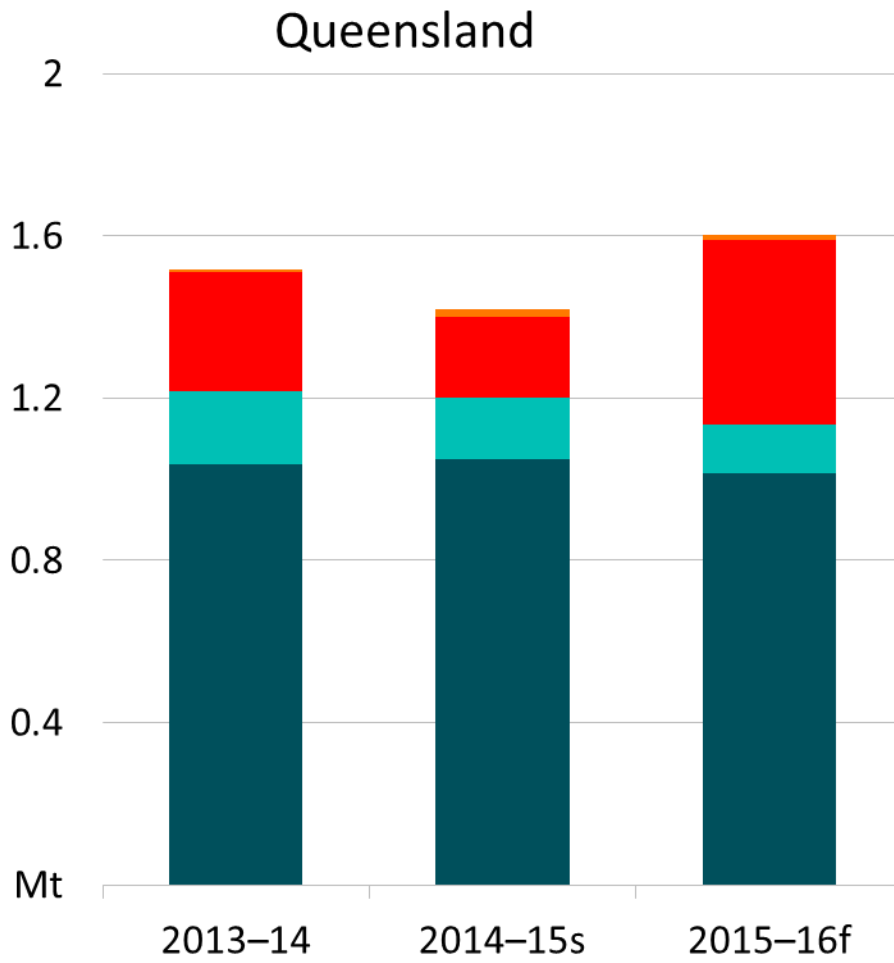
2015/07/13 to 2015/07/19



Relative soil moisture percentiles

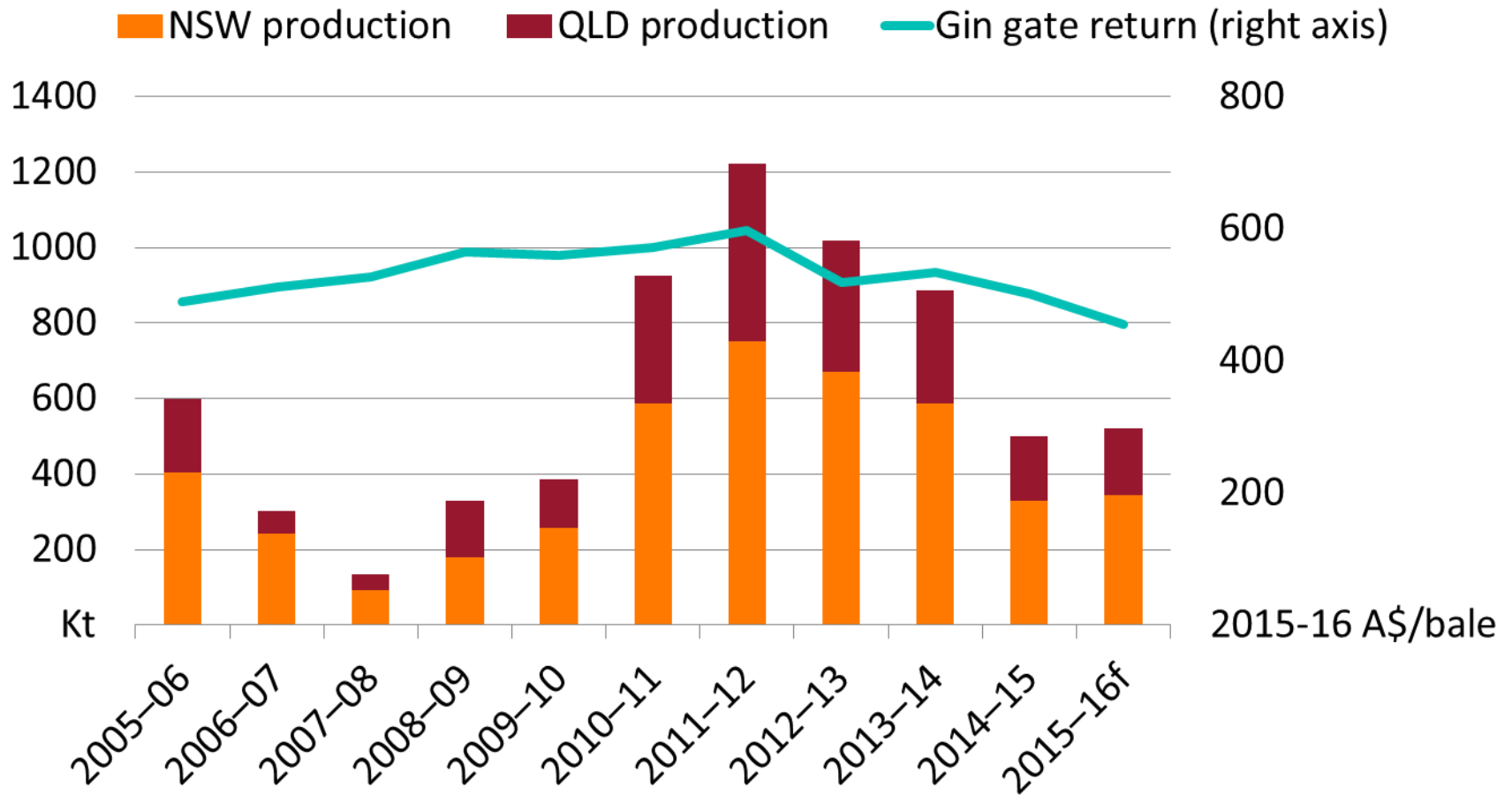


# Australian winter crop



Wheat
  Barley
  Canola
  Chickpeas
  Other

# Australian cotton production



## Further information

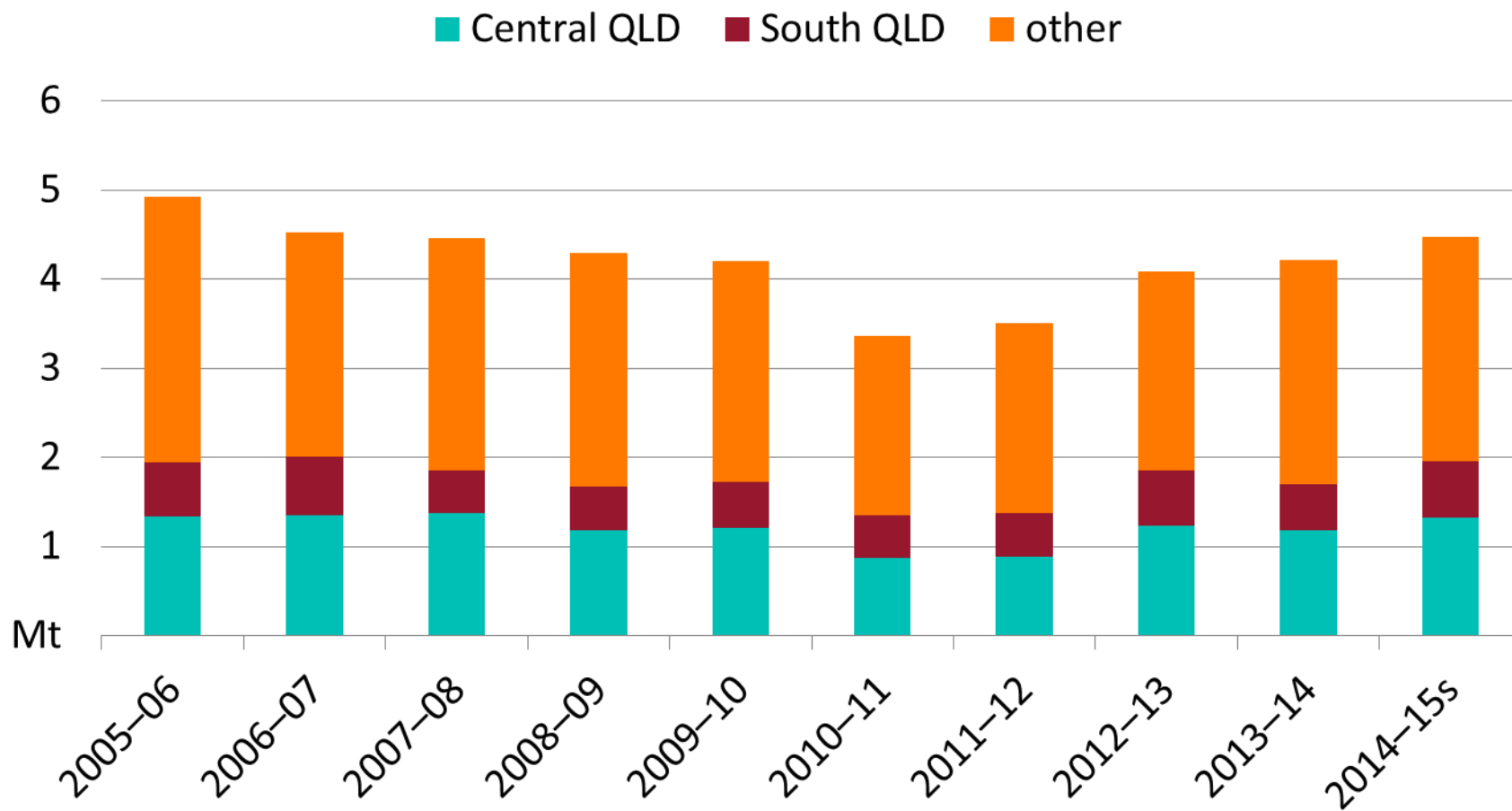
- Agricultural Commodities
- Australian Crop Report
- About my region
- Agricultural Commodity Statistics

*all available on the ABARES website*

[www.agriculture.gov.au/abares](http://www.agriculture.gov.au/abares)

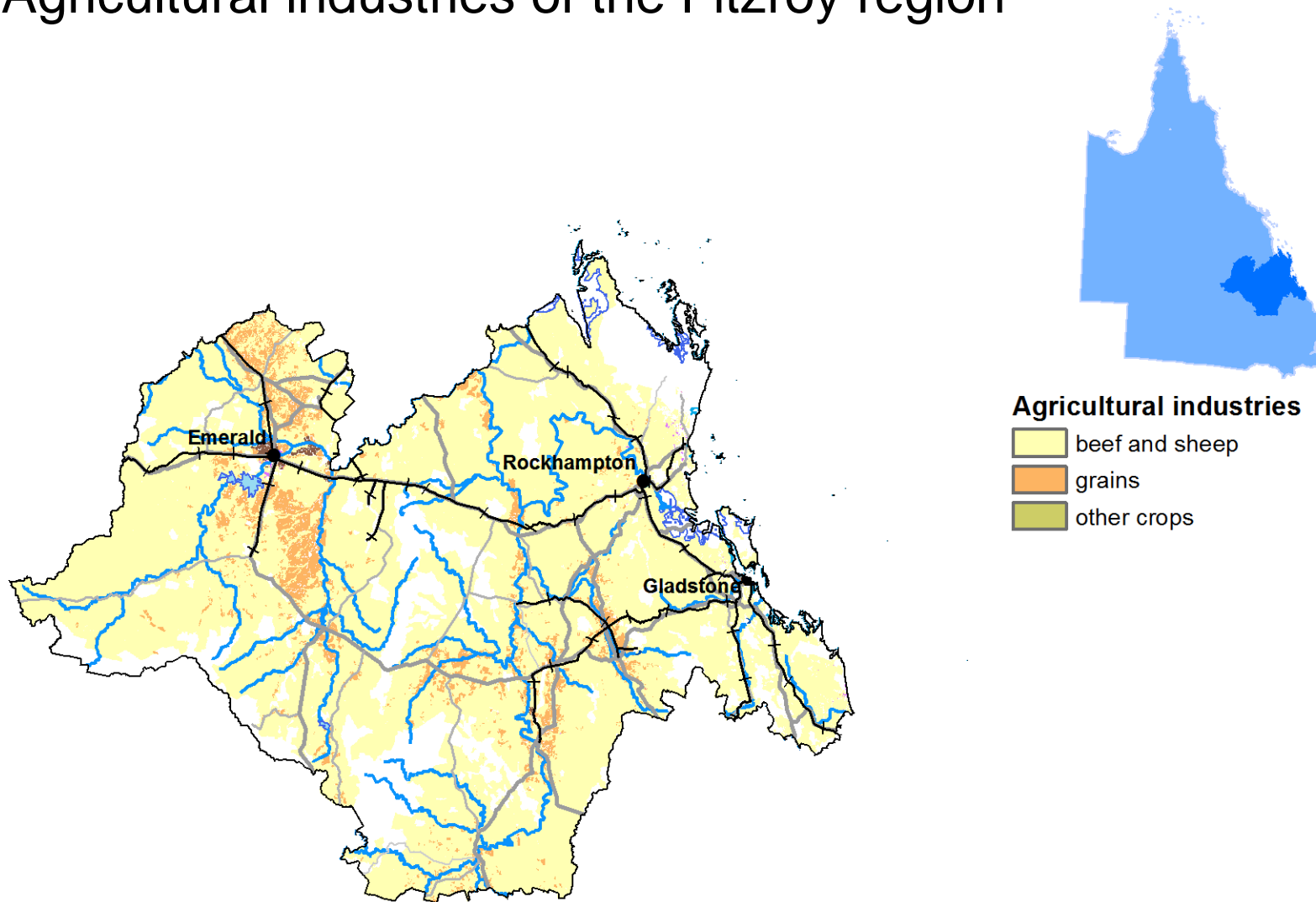


# QLD sugar production



# Value of selected agricultural commodities

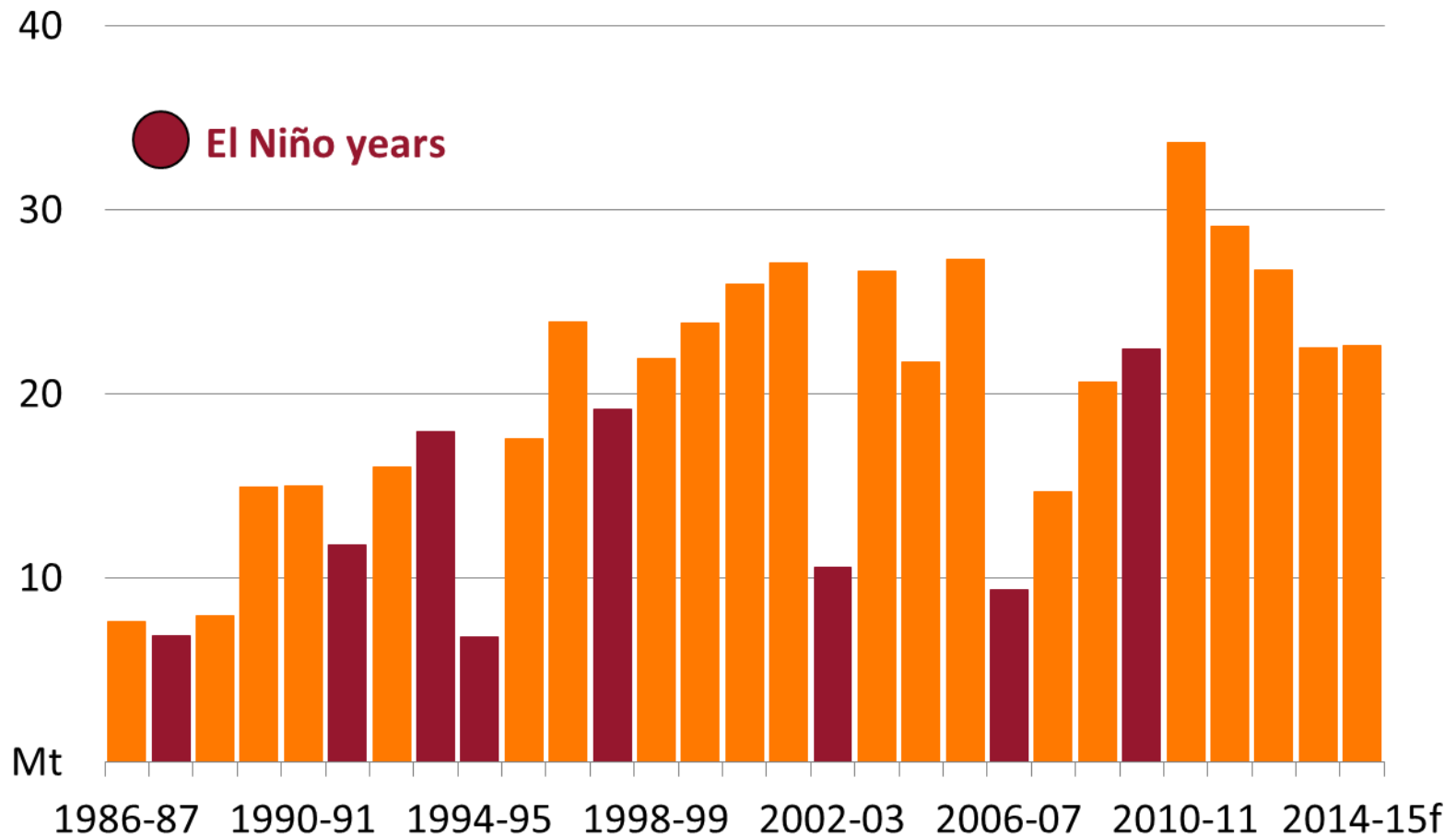
## Agricultural industries of the Fitzroy region





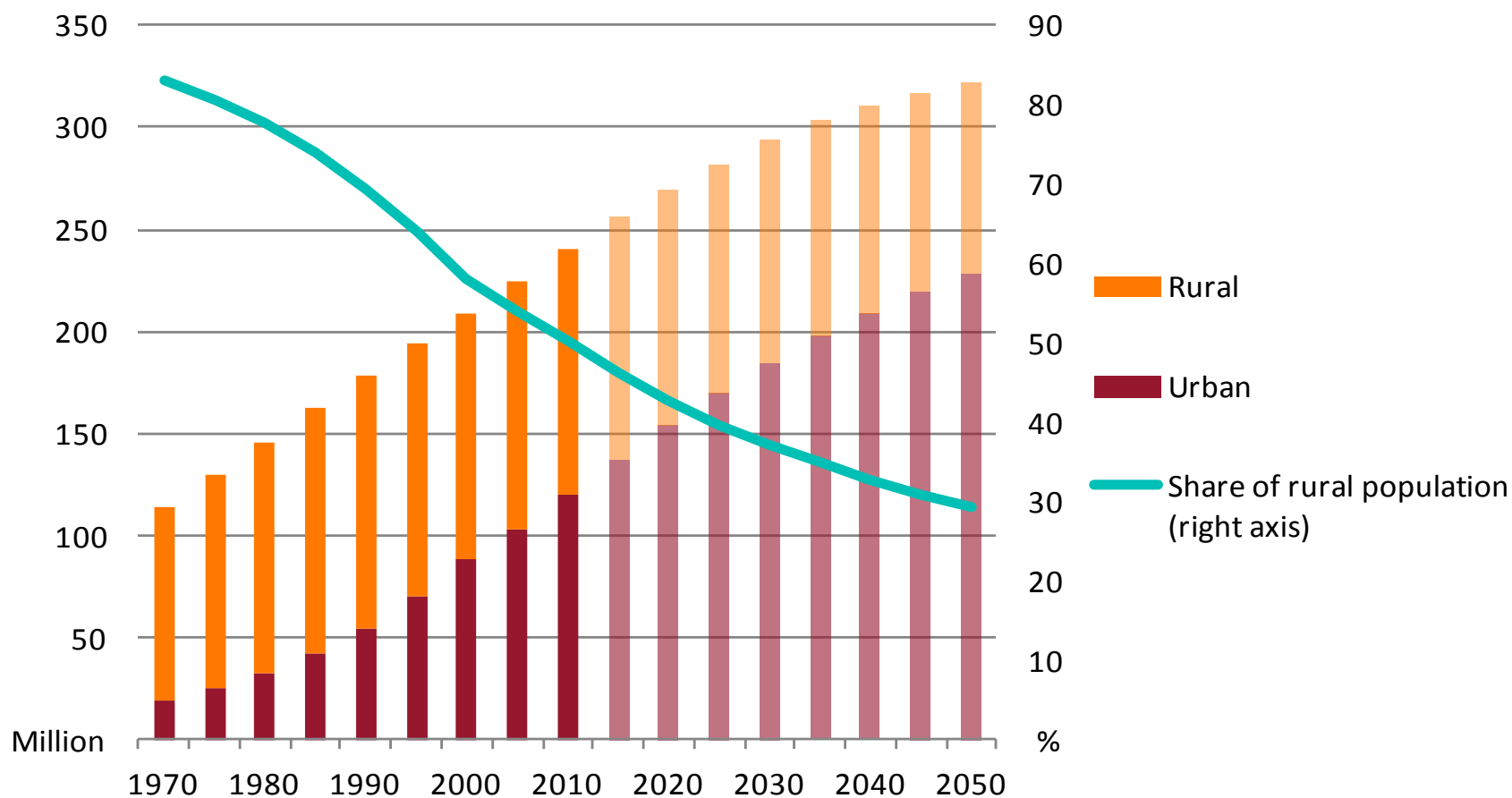
# Impact of El Niño on crop production

## Winter crop production in eastern Australia

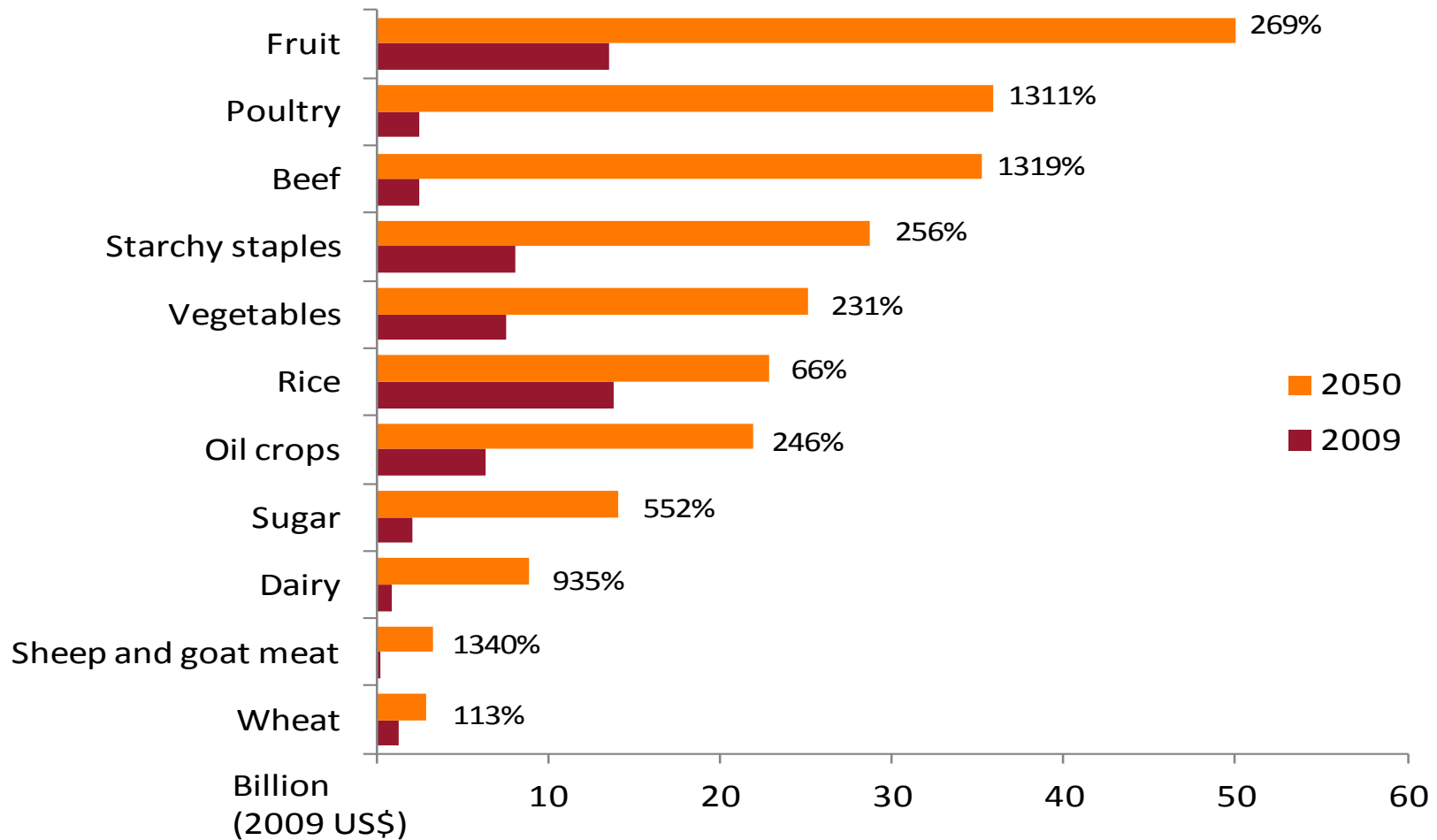


# Indonesia

Urban population to grow strongly



# Indonesian food consumption



# Production constraints, Indonesia

- Land availability
- Land degradation
- Land tenure
- Fertiliser use
- Farm labour and mechanisation
- Infrastructure
- Water availability
- Feed availability
- Productivity

# Trade of selected agrifood commodities, Indonesia

