



58,033 persons

Labour force



7.3%

Unemployment rate



4,242 persons

Unemployment numbers

Source: Dept of Employment, Small Area Labour Markets, Australia

Mar qtr 2018

Employment



\$60,048

Average total personal income

\$49,378

Median total personal income

Source: ABS, Estimates of Personal Income for Small Areas, 2015-16

Financial year

2015-16

Health care and social assistance

Largest employing industry (14.0%)

Mining

Greatest increase employed persons (17.8% 2011-2016)

Health care and social assistance

Greatest increase employed persons (579 persons)

Technicians and trade workers

Largest occupational group (8,462 persons)

2016 Census

Business



8,024

Registered businesses



19.1%

Registered construction businesses



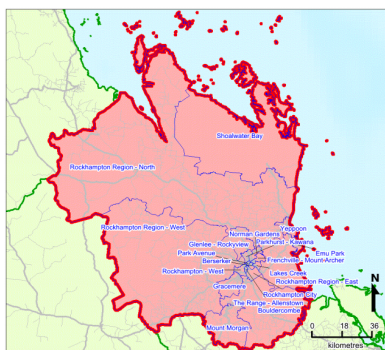
25.2%

Businesses reported turnover \$0-\$50K

Source: ABS, Counts of Australian Businesses, including Entries and Exits, Jun 2013 to Jun 2017

Financial year 2016-17

A liveable region



Capricorn Coast and Rockhampton Region

Source: The State of Queensland (Queensland Treasury), 2015

Industry

Gross Regional Product 2016/17



\$6.1B

Source: National Institute of Economic and Industry Research (NIEIR)©, 2015/16



\$1.5B

Resource Industry direct contribution to GRP

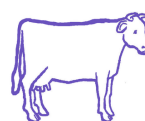
Source: Queensland Resources Council 2017



Agriculture

Value of agricultural production

\$162.4M



\$129.3M

Cattle and calves



\$6.1M

Pineapples

Financial year 2015-16

Source: ABS, Value of Agricultural Commodities produced, 2015-2016



118,496 persons
Estimated resident population 2017

712 persons
Ave annual population growth 2012-2017

Source: ABS, Regional Population Growth, Australia

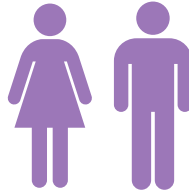
161,142 persons
Projected population 2036

1,952 persons
Ave annual population growth 2011-2036

Source: Queensland Government Population Projections, 2015 edition (medium series)

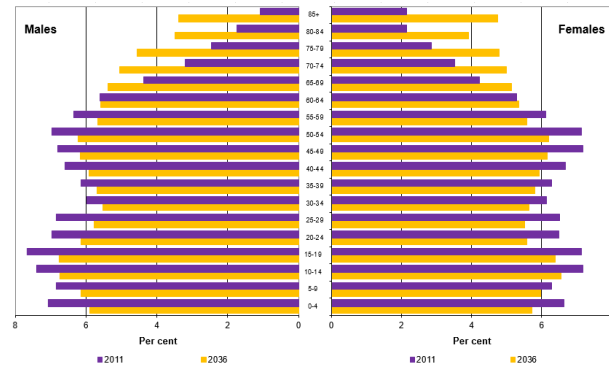
Demography

50% 50%



Females Males

Source: ABS, Census of Population and Housing, 2016



Education



54.1%

Population 15 years and over hold non-school qualifications

Engineering and related technologies

Most common field of qualification

Source: ABS, Census of Population and Housing, 2016

CQUniversity

Queensland's first dual sector university and TAFE

21,944 students

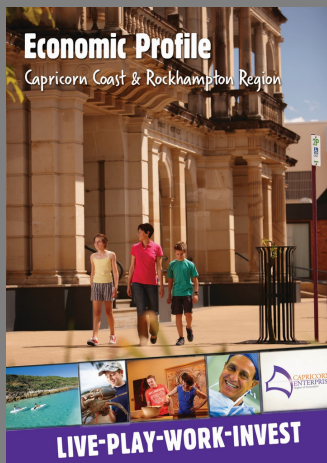
Higher education enrolments

8,767 students

Vocational education and training enrolments

Source: CQUniversity, December 2016

Read the full report



Transport



11,373 vehicles
Yeppoon Rd

Highest ave daily traffic count



1,520 vehicles

Bruce Highway (south)

Highest ave daily traffic count - heavy vehicles

Source: DTMR, Traffic Census 2017



563,531 passengers

Rockhampton Airport 2017-18

Source: BITRE, Airport Traffic Data 1985-86 to 2017-18

Mar qtr 2018

\$309,000

Median house price

\$280,000

Median unit and townhouse price

\$166,000

Median vacant urban land price

Source: DNR, Office of the Valuer-General, Property Sales

Jun qtr 2018

Median weekly rent

2 bedroom flats or units \$220

3 bedroom houses \$280

4 bedroom houses \$330

Source: Rental Tenancies Authority

Housing



Year ended Jun 18

\$120.2M

Residential building approvals

\$414.4M

Non-residential building approvals

Source: ABS, Building Approvals

