

J0107 – Shoalwater Bay Training Area Remediation Project

Procurement Update



Downer
Relationships creating success

FKG
GROUP

aurecon

Project Summary

Project Name: Shoalwater Bay Training Area Remediation Project

Project Purpose:

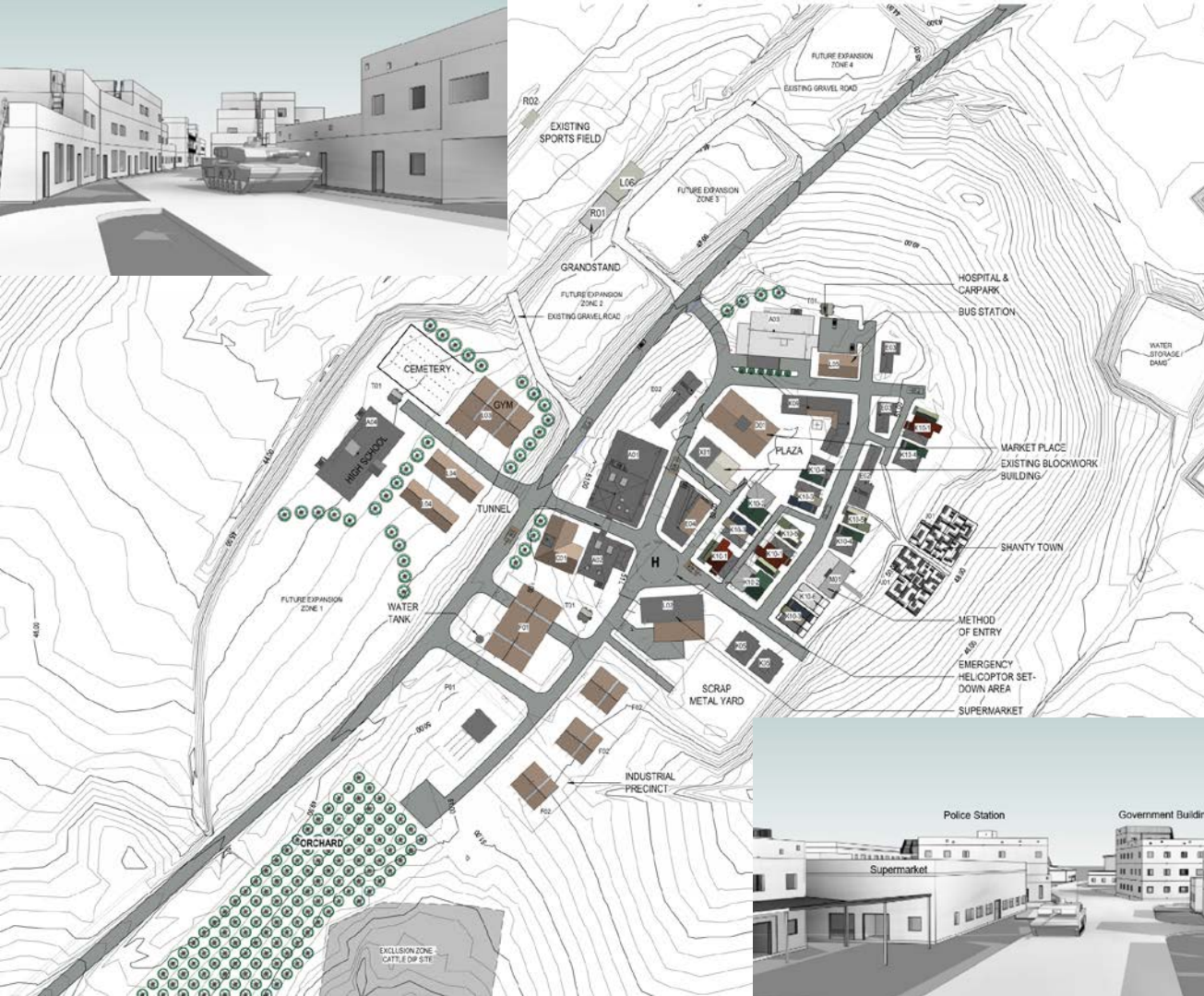
- Sustain the training area for continuing military use
- Preserve its environmental significance

Project Value: Approx. \$140M

Project Duration: Approx. 4 years, Completion 2022

Managing Contractor: Downer and FKG Joint Venture

Current Status: 30-50% Design



URBAN OPERATIONS TRAINING FACILITY

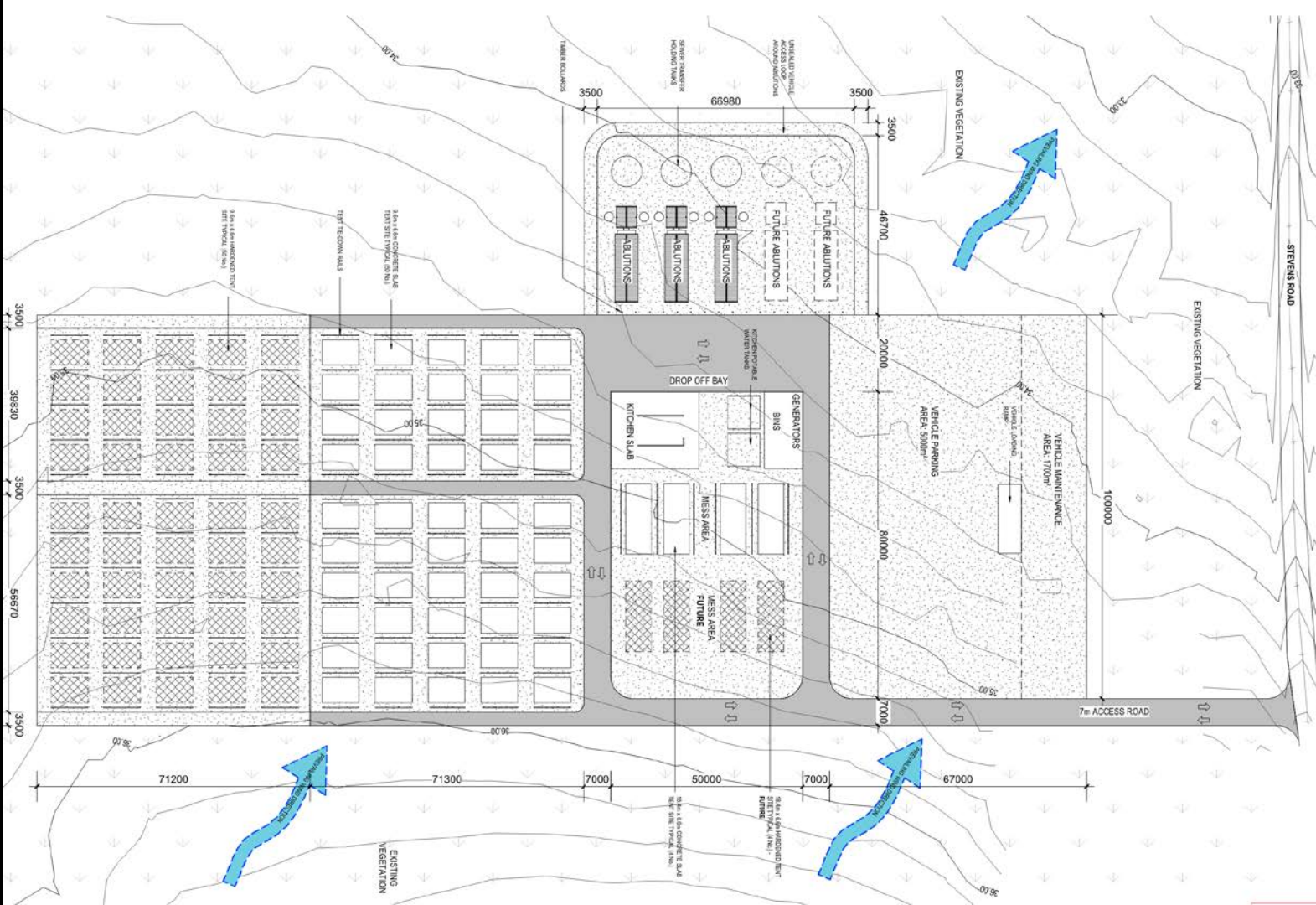
Likely Trade Packages:

- Demolition
- Precast Concrete
- Structural steel
- Bulk Earthworks
- Pavements - crushed rock, concrete
- Carpentry / Partitions
- Metal Cladding & Roofing
- Prefabricated Sheds
- Stormwater drainage
- Plumbing and electrical

WILLIAMSON CAMP

Likely Trade Packages:

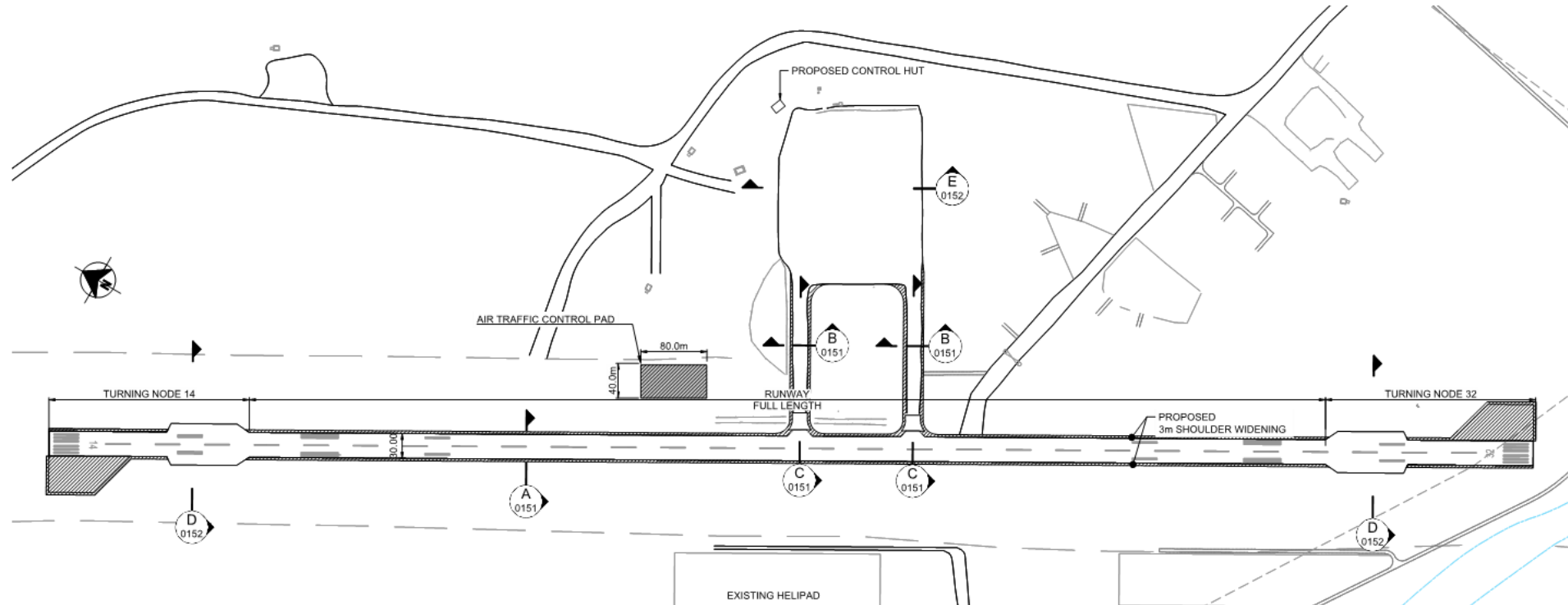
- Concrete
- Supply & Place
- Structural steel
- Bulk
- Earthworks
- Pavements -
- crushed rock
- Metal Cladding
- & Roofing
- Prefabricated
- Sheds
- Stormwater
- drainage
- Plumbing and
- electrical



WILLIAMSON AIRFIELD

Likely Trade Packages:

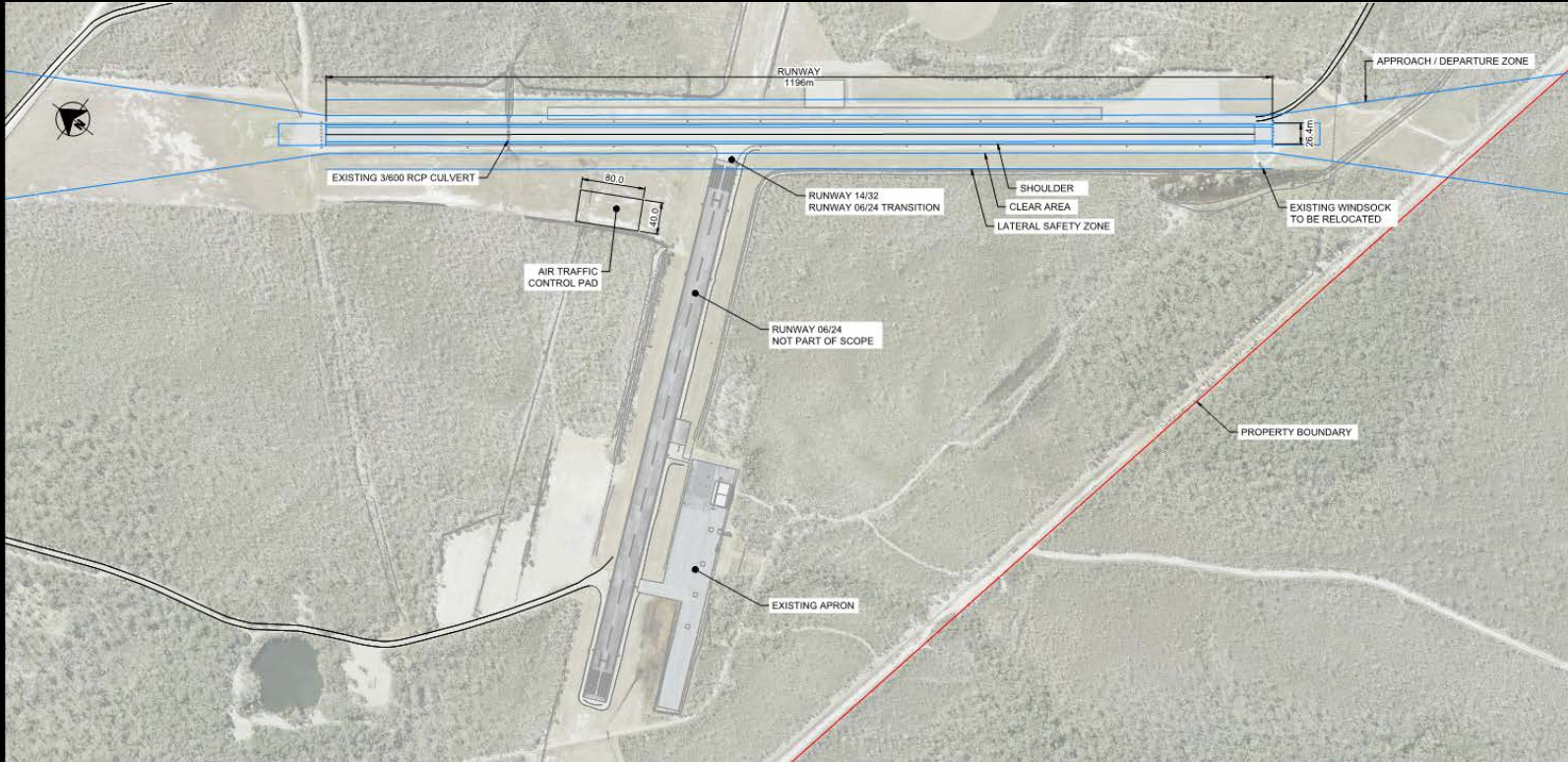
- Bulk Earthworks
- Crushed Rock Supply
- Linemarking
- Airfield Pavements
- Drainage



SAMUEL HILL AIRFIELD

Likely Trade Packages:

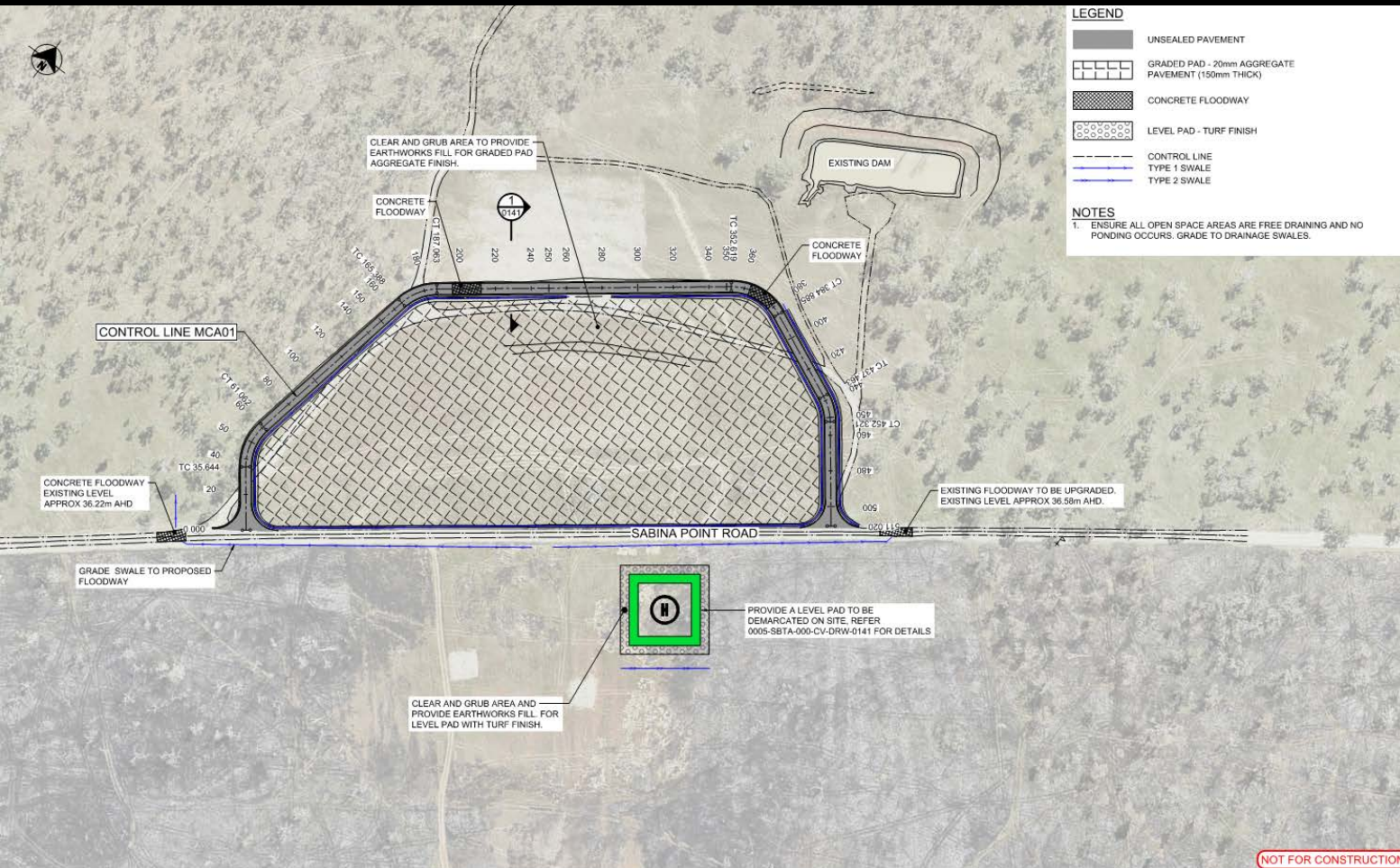
- Bulk Earthworks
- Airfield Pavements
- Crushed Rock Supply
- Drainage
- Linemarking
- Airfield Ground Lighting



AEROMEDICAL LANDING ZONE AND FIELD HOSPITAL

Likely Trade Packages:

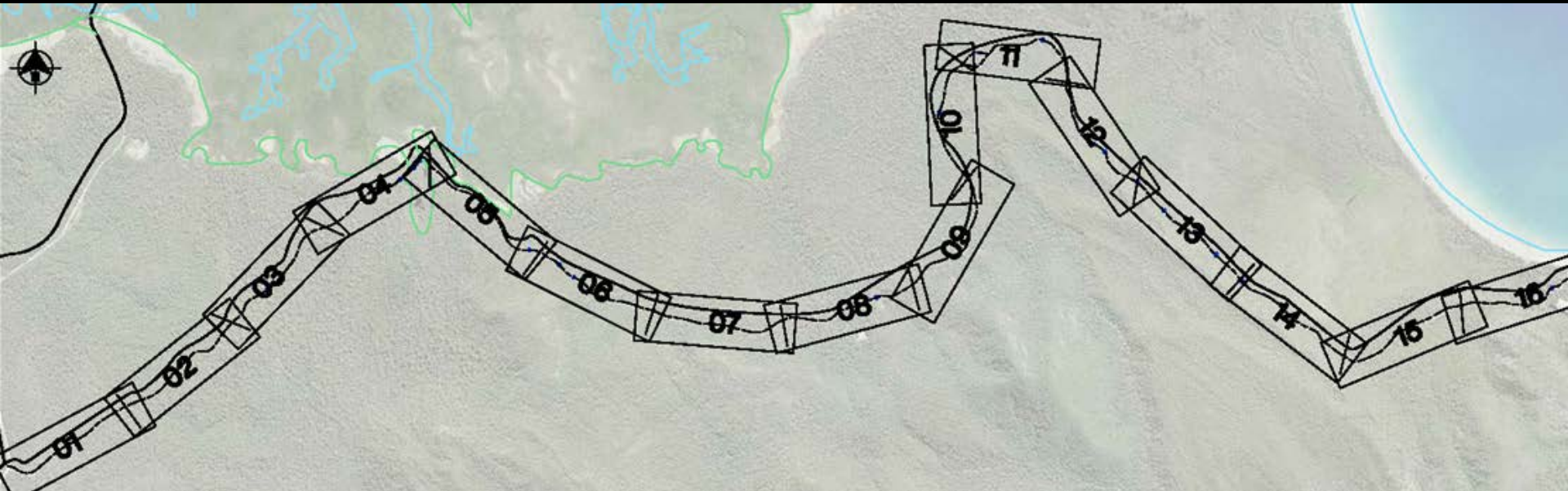
- Clearing & Grubbing
- Bulk Earthworks
- Pavements - crushed rock
- Stormwater drainage
- Erosion and sediment control

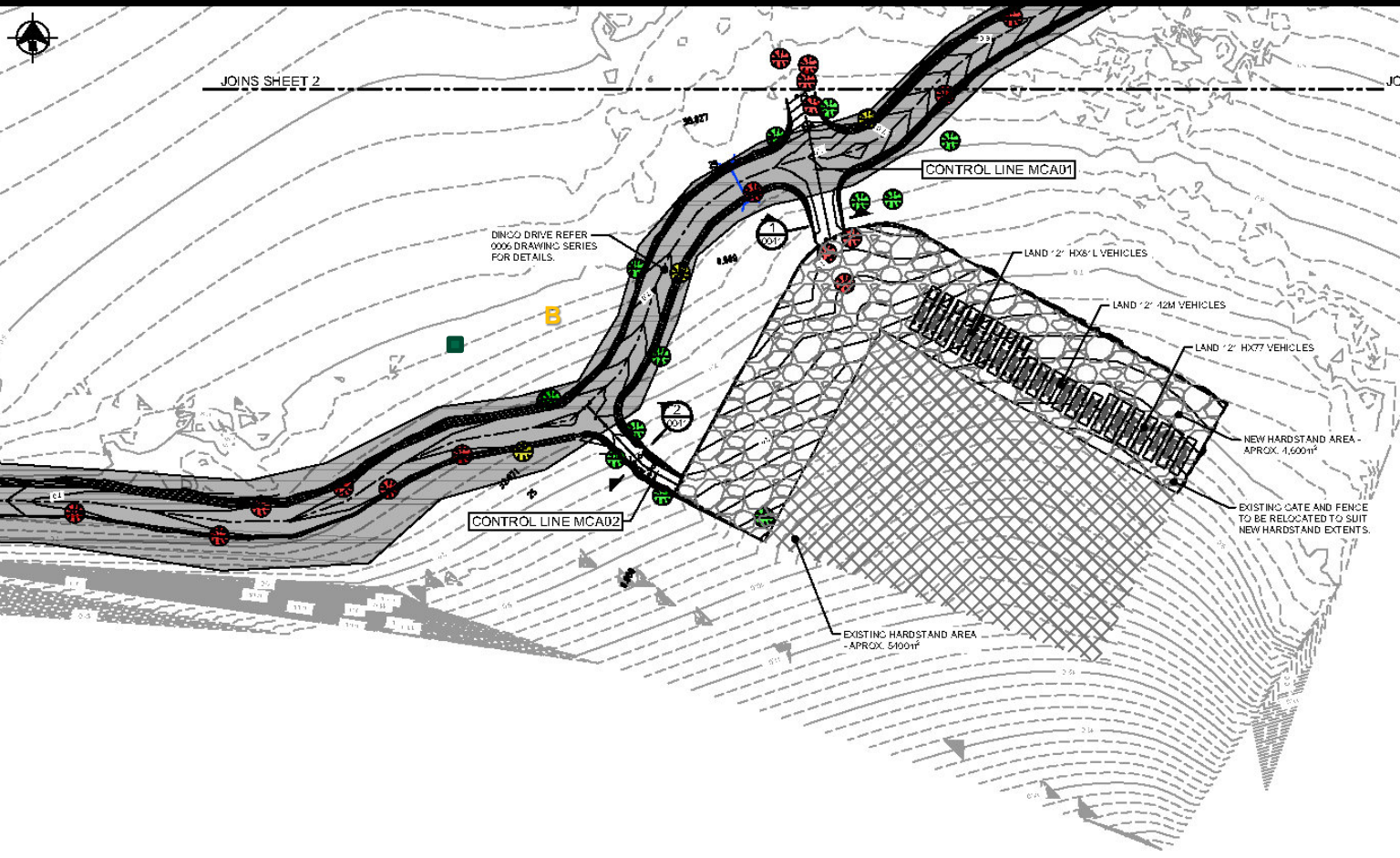


DINGO DRIVE

Likely Trade Packages:

- | | | |
|--------------------------|-----------------------|----------------|
| - Tree Clearing | - Concrete Pavements | - Signage |
| - Bulk Earthworks | - Crushed Rock Supply | - Survey |
| - Crushed Rock Pavements | - Stormwater Drainage | - Soil testing |

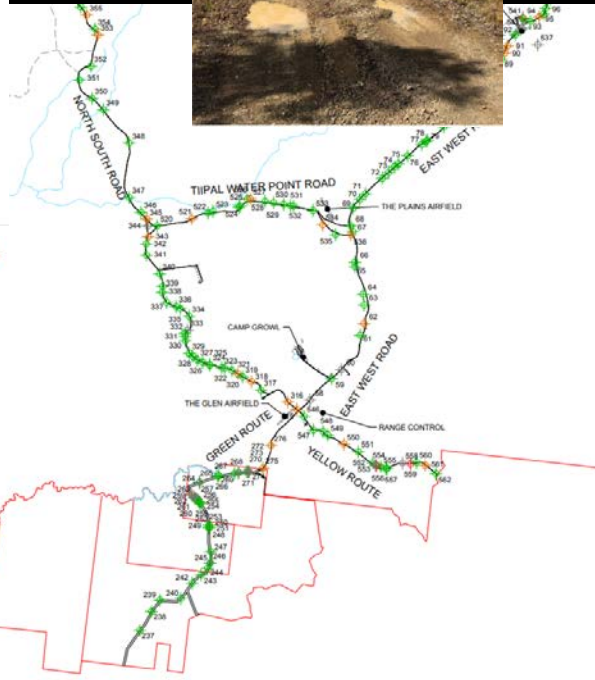
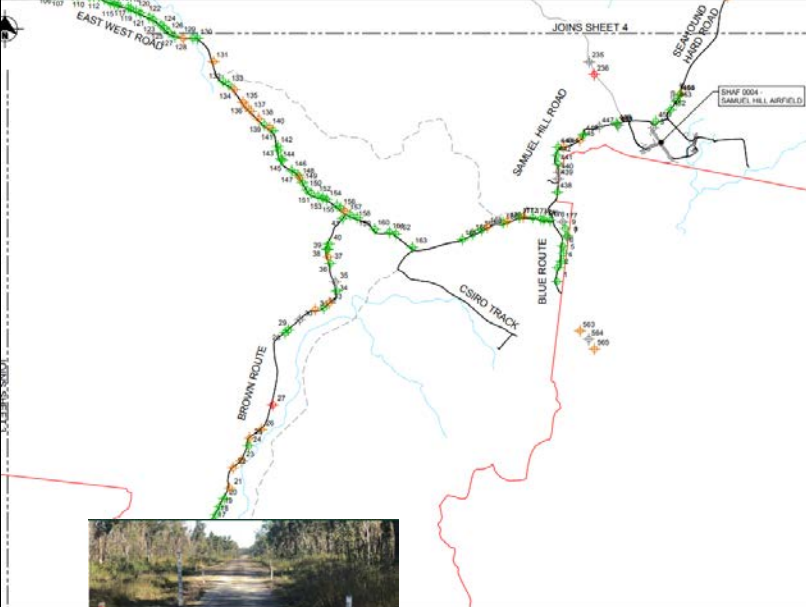




FRESHWATER BEACH LANDING

Likely Trade Packages:

- Precast concrete
- Bulk earthworks
- Crushed rock pavements



CREEK CROSSINGS

Likely Trade Packages:

- Bulk earthworks
- Crushed rock pavements
- In-situ concrete
- Stormwater Drainage
- Erosion and sediment control

Project Status and Future Milestones

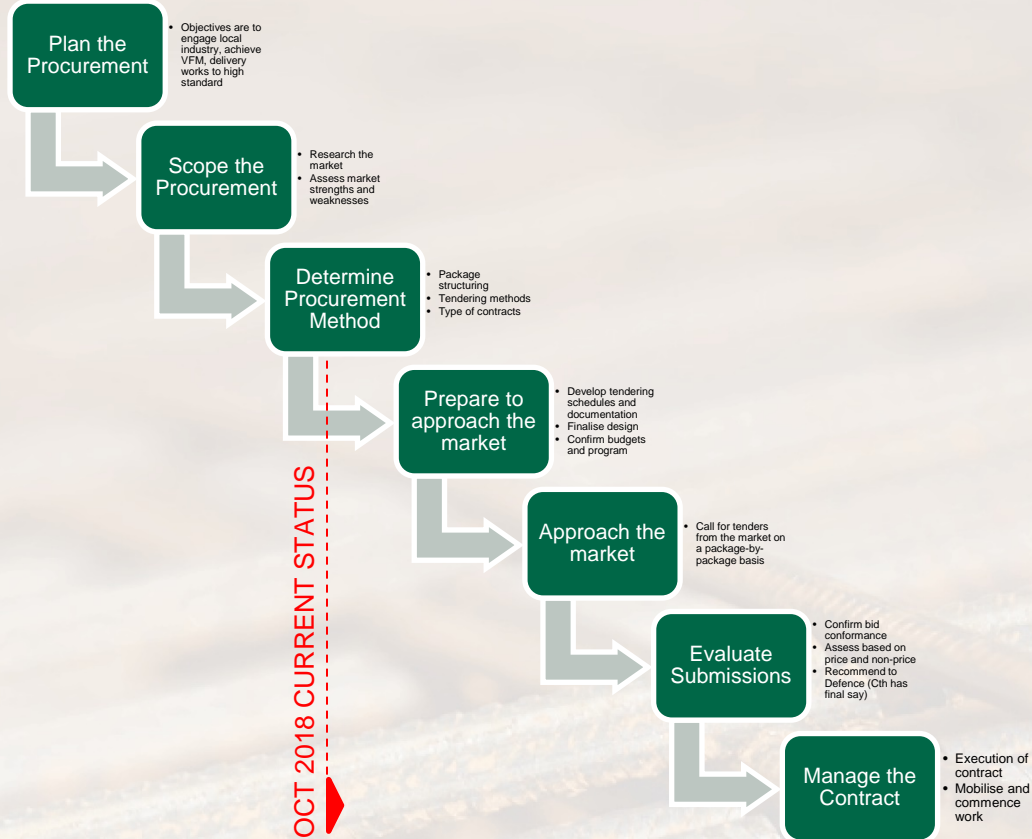


Other Dates:

- Delivery Approval : 17 June 2019
- Site Mobilisation: 5 March 2020
- Target Completion: June 2022

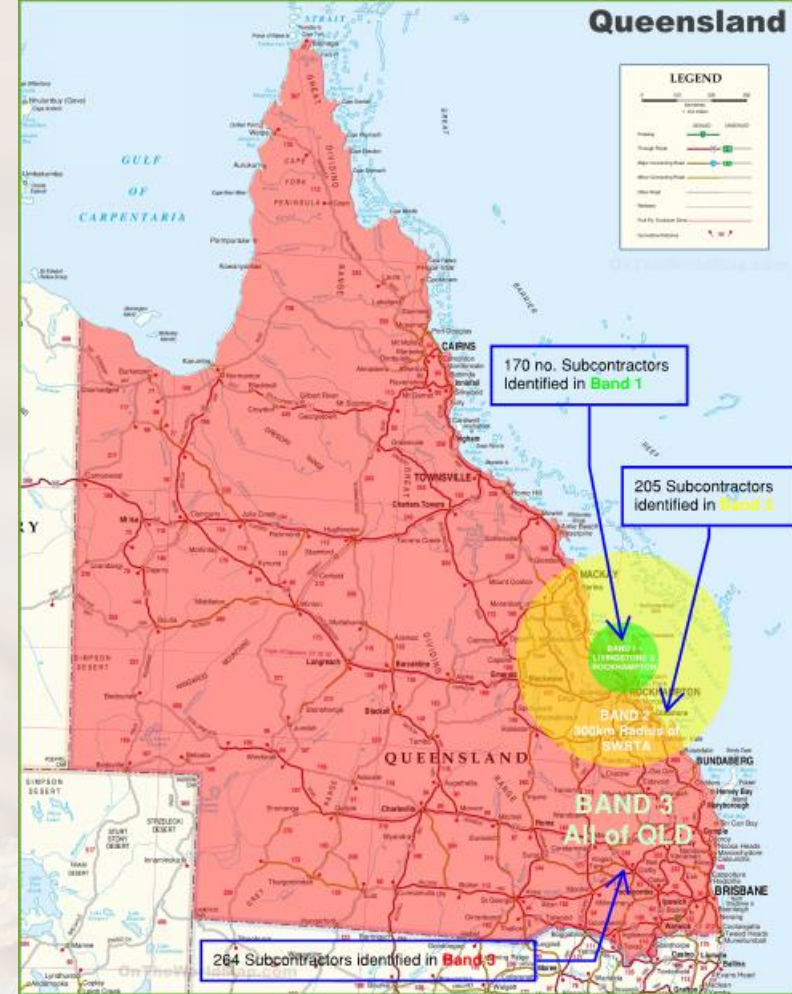
Procurement Process

All in
accordance
with
Commonwealth
Procurement
Rules



Local Industry Capacity and Capability Research

- Meeting regularly with local industry organisations
- Personally visiting local prospective subcontractors to assess and document their capabilities and capacities
- Categorising Subcontractor locality into Bands
- Outcomes:
 - 170/264 Subcontractors in Band 1 (immediate surrounds)
 - 205/264 Subcontractors in Band 2 (300km radius)
 - 264/264 Subcontractors in Band 3 (All QLD)



Local Industry Capacity and Capability

Next Steps

- Continue research into LICC with focus on 'scarce' trades
- Investigate Subcontractor 'readiness' through meetings/questionnaire
- Consideration of LICC findings in package structuring
- Ongoing monitoring of key subcontractor availability
- Coordination with ASTMI project team on trade demand
- Encourage 'teaming' of SMEs with other more experienced subcontractors
- Collaborating with Defence to prepare local subcontractors for tendering on the project

