

Economic Profile

Capricorn Coast & Rockhampton Region



LIVE-PLAY-WORK-INVEST



Disclaimer

This profile was produced by Capricorn Enterprise. All data and information in this report are believed to be accurate and have come from sources believed to be reliable. However, Capricorn Enterprise does not guarantee or represent that the data and information are accurate, up to date or complete, and disclaims liability for all claims, losses, damages or costs of whatever nature and howsoever occurring, arising as a result of relying on the data and information, regardless of the form of action, whether in contract, tort (including negligence), breach of statutory duty or otherwise.

INTRODUCTION

The purpose of this profile is to present an economic overview of the Capricorn Coast and Rockhampton area which includes the Rockhampton Regional Council and Livingstone Shire Council areas. The profile provides information and statistics on various economic and related indicators such as demographics, employment, business and industry, building activity, tourism, education, transport and affordability. This profile has been developed by Capricorn Enterprise.

Demographic information provided in this publication consists of the latest estimated resident population, changes to population and age characteristics, and population projections.

Information on employment is provided by way of employment figures by industry and occupation, labour force statistics and mean taxable income.

The business and industry sections include information on business counts, production and activity in the agriculture and mining sectors, and data on Queensland's commodity exports as it relates to the region.

The building activity section gives a concise summary of the number and value of building approvals in the region.

Information on education provided in this profile includes the number of primary and secondary schools in the region, information on activity at Central Queensland University, vocational education and training, as well as 2011 and 2016 Census figures on the qualifications of the region's population.

Road and air travel statistics are all reported in the transport section.

Finally, details of the region's liveability are provided in the form of retail price information, fuel prices and house prices for both purchase and rental markets.

Note: Results from the ABS 2016 Census of Population and Housing were released on 27 June 2017. Further 2016 Census data has been progressively released with employment data released in October 2017. This profile has been updated following the progressive Census releases.

The Independent Assurance Panel concluded that the 2016 Census data was of comparable quality to the 2011 and 2006 Census data with a person response rate of 94.8%.

Contents

INTRODUCTION.....	3
Overview	6
Key indicators at a glance	6
Capricorn Coast and Rockhampton	6
Climate	3
DEMOGRAPHY	4
Quick stats	4
Estimated Resident Population	4
Population	5
Age Characteristics	6
Population Projections	7
EMPLOYMENT	8
Quick stats	8
Employment by Industry	9
Occupation	10
Age	11
Labour force	11
Unemployment	12
Journey to Work	13
Estimates of Personal Income	14
INDUSTRY	15
Quick stats	15
Gross Regional Product	15
Agricultural Production	18
Mineral Production	19
Exports from Queensland Ports	20
BUSINESS	23
Quick stats	23
HOUSING.....	27
Quick stats	27
Median house, unit/townhouse and urban vacant land prices	27
Median Weekly Rent	28
Building Approvals	30
Land Activity	32
EDUCATION	32
Quick stats	32
Apprentices and Trainees	32
Vocational education and training students	34
CQUniversity	34

Educational Qualifications	35
Primary and Secondary Schools	36
TRANSPORT	37
Quick stats	37
Roads	37
Fuel Prices	38
Air Travel	39
LIVEABILITY	39
Quick stats	39
Retail Prices	39
SOCIAL AMENITIES	41
Boat Registrations	41
Sporting Clubs	42

Overview

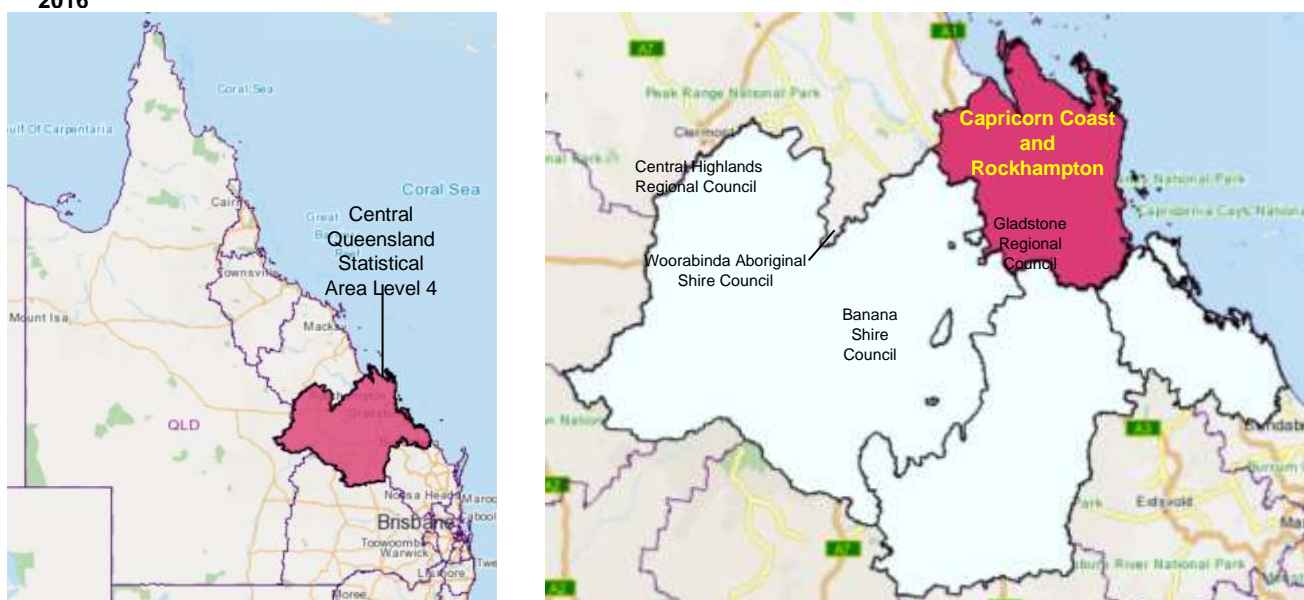
Key indicators at a glance

- Gross Regional Product - \$6.3b (2018/19)
- Population – 119,590 persons
- Average annual population growth – 0.2%
- Population projection 2041 – 159,893 persons
- March quarter 2020 Labour force – 64,043 persons
- March quarter 2020 unemployment rate 6.7%

Capricorn Coast and Rockhampton

The Capricorn Coast and Rockhampton area comprises the two local government areas of Rockhampton Regional Council and Livingstone Shire Council. It is within the Fitzroy Statistical Area Level 4 (SA4) and covers a total area of 18,356 km² and accounts for 1.1% of the state's area.

Figure 1 Australia, Central Queensland SA4 and Capricorn Coast and Rockhampton area, 2016



Source: Australian Bureau of Statistics, Census of Population and Housing, 2011.

There are 19 Statistical Area Level 2 (SA2) within the Capricorn Coast and Rockhampton area as listed below. The Capricorn Coast and Rockhampton area includes the urban centres of Emu Park, Gracemere, Mount Morgan, Rockhampton and Yeppoon.

[Berserker](#)

[Bouldercombe](#)

[Emu Park](#)

[Frenchville - Mount Archer](#)

[Glenlee - Rockyview](#)

[Gracemere](#)

[Lakes Creek](#)

[Mount Morgan](#)

[Norman Gardens](#)

[Park Avenue](#)

[Parkhurst – Kawana](#)

[Rockhampton – West](#)

[Rockhampton City](#)

[Rockhampton Region –](#)

[East](#)

[Rockhampton Region –](#)

[North](#)

[Rockhampton Region –](#)

[West](#)

[Shoalwater Bay](#)

[The Range – Allenstown](#)

[Yeppoon](#)

Note: maps of SA2 areas can be downloaded from *Queensland Statistical Areas, Level 2 (SA2), 2018*, <http://www.qgso.qld.gov.au/products/maps/qld-sa2-asgs-2016/index.php>

Figure 2 Statistical Area Level 2 in the Capricorn Coast and Rockhampton, 2011



Based on Australian Bureau of Statistics, Australian Statistical Geography Standard, 2011.

Source: The State of Queensland (Queensland Treasury), 2015

Climate

The Capricorn Coast and Rockhampton area enjoys a subtropical climate with wet summers and low winter rainfall. The highest mean monthly maximum temperature in Rockhampton is in December, with 32.2°C. Yeppoon's highest mean monthly maximum temperature is in January, with 29.4°C. The lowest mean monthly minimum temperature in Rockhampton is 9.7°C in July and 12.1°C in Yeppoon in July.

Both Yeppoon and Rockhampton have their highest mean monthly rainfall in February (177.7 mm and 144.0 mm respectively). Rockhampton's lowest mean monthly rainfall is in September, with just 24.2 mm, whereas Yeppoon's lowest mean monthly rainfall is in August, with 31.4 mm.

Figure 3 Mean monthly maximum and minimum temperatures, Rockhampton (a) and Yeppoon (b)

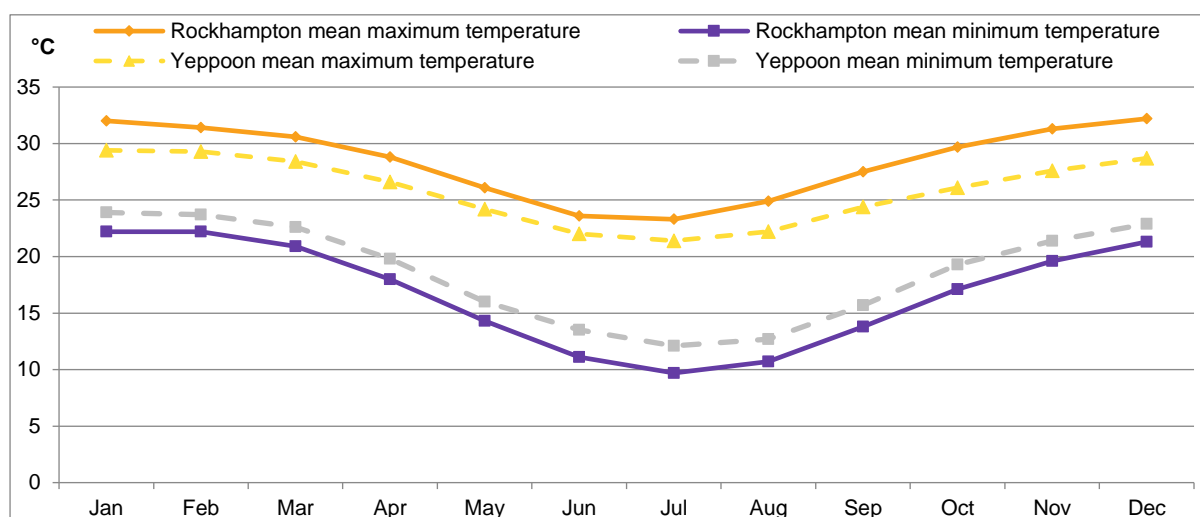
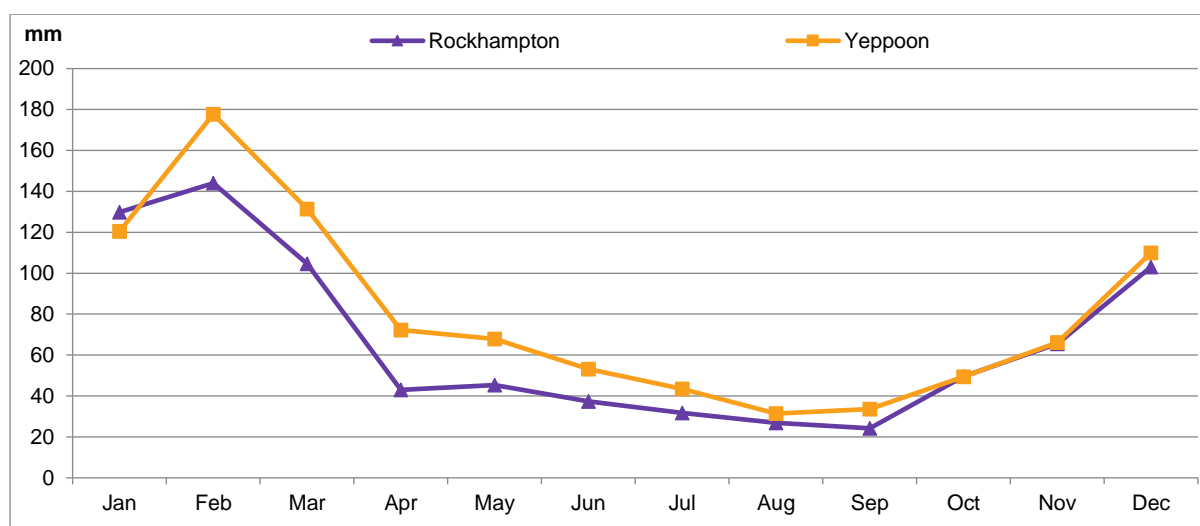


Figure 4 Mean monthly rainfall, Rockhampton (a) and Yeppoon (b)



(a) Based on observations recorded at Rockhampton Airport from 1939 to 2020.

(b) Based on observations recorded at Yeppoon Esplanade from 1993 to 2019 (temperature) and 1994 to 2020 (rainfall).

Source: Bureau of Meteorology, 2020

DEMOGRAPHY

Quick stats

- 2019 estimated resident population – 119,590 persons
- 2014 - 2019 average annual increase in population – 0.2%
- Greater proportion of persons aged 0 to 19 years than Queensland
- Greater proportion of persons aged 55 to 69 years and 75 years and over than Queensland
- 2041 population projection – 159,893 persons
- 2016 – 2041 average annual increase in population – 1,650 persons

Estimated Resident Population

The estimated resident population of the Capricorn Coast and Rockhampton area at 30 June 2019 was 119,590 persons, 2.3% of the total Queensland population. Between 30 June 2014 and 30 June 2019, the population in the Capricorn Coast and Rockhampton area increased by an average of 0.2% per annum, a lower growth rate than Queensland, which increased by an average of 1.5% per annum.

While the population of the region increased between 2014 and 2019, population change varied significantly by Statistical Area Level 2 (SA2). The fastest population growth over the five-year period occurred in Gracemere SA2 (an average of 2.5 % per annum), followed by Emu Park SA2 (an average of 2.2% per annum). Although Shoalwater Bay SA2 experienced a faster average annual population growth rate, it should be noted that this was from a very low base.

Table 1 Estimated resident population by SA2 (a), Capricorn Coast and Rockhampton, 2014, 2018 and 2019

Statistical Area Level 2(b)	Area km ²	Estimated resident population as at 30 June			Change (c)	
		2014	2018	2019	2014-2019	
		— number —			%	persons
Berserker	10.0	7,278	6,806	6,753	-1.5	-105
Bouldercombe	1,338.7	1,945	1,800	1,799	-1.5	-29
Emu Park	40.8	5,283	5,748	5,895	2.2	122
Frenchville - Mount Archer	30.2	9,421	9,053	9,047	-0.8	-75
Glenlee - Rockyview	208.0	4,971	5,136	5,197	0.9	45
Gracemere	154.1	11,261	12,390	12,758	2.5	299
Lakes Creek	16.8	5,232	4,887	4,918	-1.2	-63
Mount Morgan	490.7	3,123	2,928	2,931	-1.3	-38
Norman Gardens	36.1	10,020	10,673	10,859	1.6	168
Park Avenue	5.0	5,505	5,064	5,059	-1.7	-89
Parkhurst - Kawana	28.4	7,035	7,170	7,251	0.6	43
Rockhampton - West	34.5	6,233	6,001	5,957	-0.9	-55
Rockhampton City	51.2	3,541	3,252	3,179	-2.1	-72
Rockhampton Region - East	680.2	3,425	3,404	3,345	-0.5	-16
Rockhampton Region - North	7,566.9	4,294	4,327	4,358	0.3	13
Rockhampton Region - West	4,359.0	2,943	2,884	2,898	-0.3	-9
Shoalwater Bay	3,177.0	14	16	16	2.7	0
The Range - Allenstown	5.5	8,599	8,143	8,103	-1.2	-99
Yeppoon	78.6	18,076	18,998	19,267	1.3	238
Capricorn Coast and Rockhampton	18,311.7	118,199	118,680	119,590	0.2	278
Queensland	1,734,174.0	4,719,653	5,009,424	5,094,510	1.5	74,971
Capricorn Coast and Rockhampton as % of Queensland	..	2.5	2.4	2.3

2017 figures are revised. 2018 figures are preliminary.

(a) Based on Australian Bureau of Statistics, Australian Statistical Geography Standard 2011.

(b) A map detailing boundaries for Statistical Area Level 2s can be found in the Introduction of this profile.

(c) Average annual growth rate.

Source: Australian Bureau of Statistics, *Regional Population Growth, Australia*, cat. no. 3218.0.

Population

Longer-term historical estimated resident population data from the Australian Bureau of Statistics indicate that the population of the Capricorn Coast and Rockhampton area has increased since 1991. The population increased from 89,668 persons in 1991 to 119,590 persons in 2019. This was an increase of 29,922 persons at an average annual growth rate of 1.2%.

Annual population change for the Capricorn Coast and Rockhampton area has varied considerably between 1991 and 2019. The largest population change was between 2011 and 2012, with an increase of 2,603 persons. The greatest population decline occurred between 2015 and 2016 with a decrease of 333 persons.

Figure 5 Estimated resident population (a), Capricorn Coast and Rockhampton, 1991 to 2019

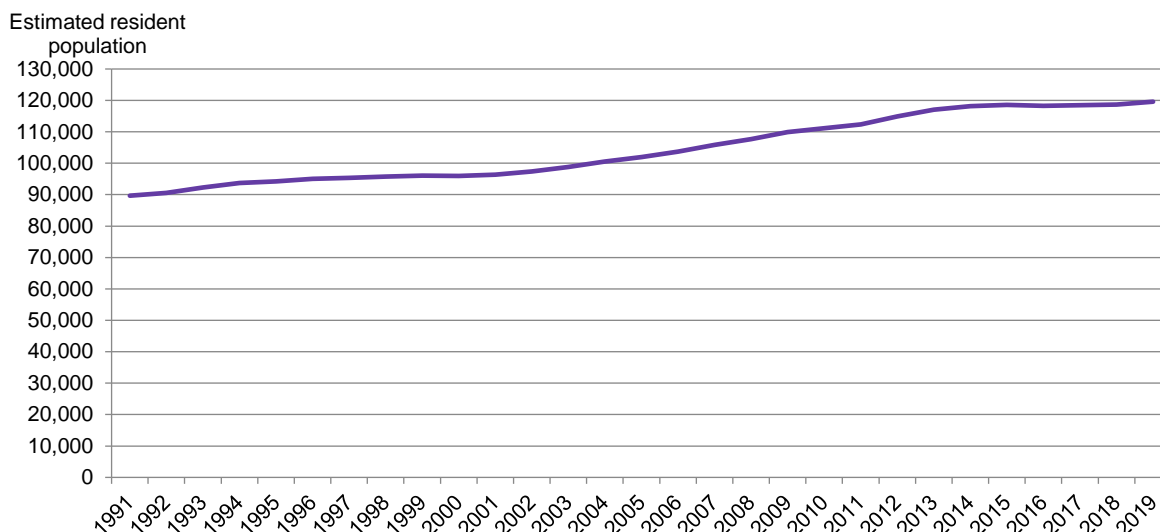
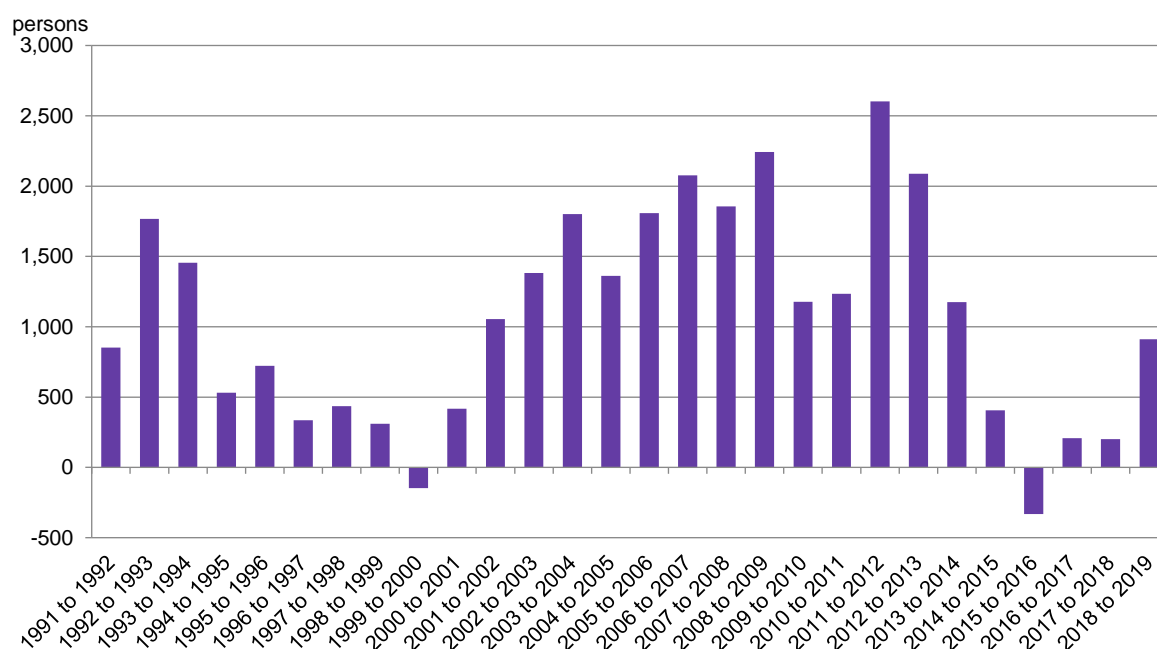


Figure 6 Annual change in the estimated resident population, Capricorn Coast and Rockhampton, 1991 to 2019



2018 figures are revised. 2019 figures are preliminary.

Source: Australian Bureau of Statistics, *Regional Population Growth, Australia*, cat. no. 3218.0.

Age Characteristics

Data from the Australian Bureau of Statistics indicate that the Capricorn Coast and Rockhampton area, as at 30 June 2019, had a greater proportion of persons aged 0 to 19 years, 55 to 69 years and 75 years and over when compared with Queensland. The largest percentage difference between the Capricorn Coast and Rockhampton area and Queensland was those persons aged 25 to 29 years (0.8 percentage points lower) and persons aged 55 to 59 years (0.7 percentage points higher).

Between 2014 and 2019, the greatest increase in population in the Capricorn Coast and Rockhampton area was persons aged 70 to 74 years (785 persons), followed by persons aged 55 to 59 years (677 persons) and 60 to 64 years (593 persons). The greatest decrease in population in the area was persons aged 50 to 54 years (1,163 persons) and 40 to 44 years (884 persons). As at 30

June 2019, the median age for the Capricorn Coast and Rockhampton area was 38.0 years compared to 37.4 years in Queensland.

Figure 7 Estimated resident population by age, as a percentage of the population, Capricorn Coast and Rockhampton area and Queensland, 2019(a)

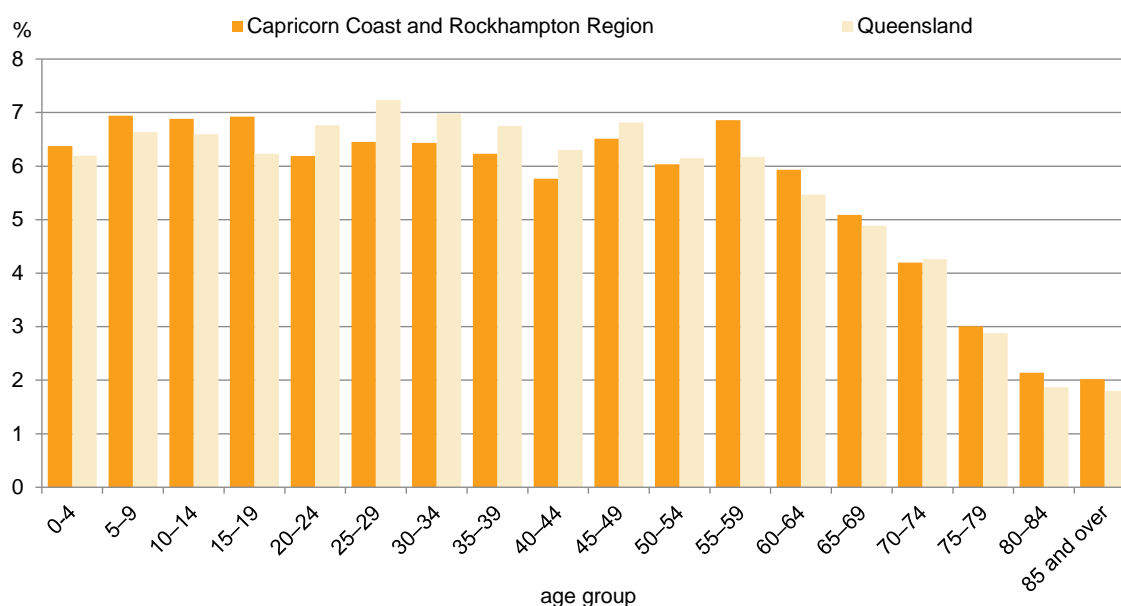
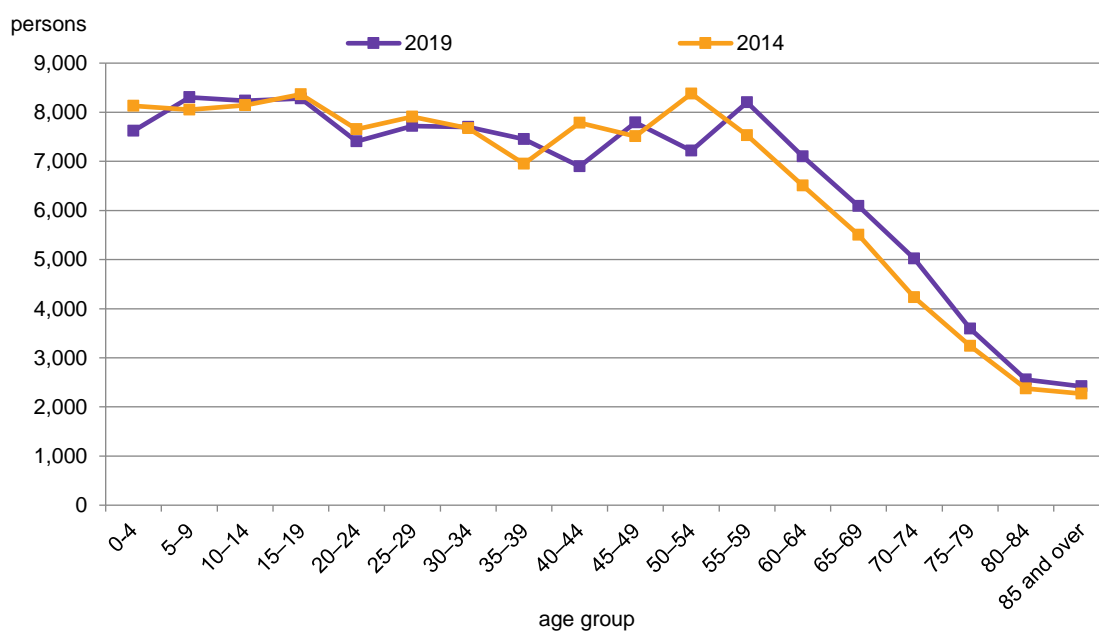


Figure 8 Estimated resident population by age, Capricorn Coast and Rockhampton, 2013 and 2018 (a)



(a) 2001 to 2016 figures are final. 2018 figures are revised. 2019 figures are preliminary.

Source: Australian Bureau of Statistics, *Population Estimates by Age and Sex, Australia and States*, cat. no. 3235.0.

Population Projections

Population projections published by Queensland Treasury and Trade, 2018 edition, indicate that the population of the Capricorn Coast and Rockhampton area will increase to 159,893 persons by the year 2041. The Region is projected to have a higher rate of growth (1.2%) than the Central Queensland SA4 (0.8%) but slower rate than Queensland (1.6%). It is predicted the region will grow on average by 1,650 persons per year between 2016 and 2041.

Table 2 Population projections (a), Capricorn Coast and Rockhampton area, Central Queensland SA4 and Queensland, 2016 to 2041

Area	Estimated resident population 2016	- Projected resident population -					Average annual growth	
		2021	2026	2031	2036	2041	2016 to 2041	
		— number —					persons	%
Capricorn Coast and Rockhampton	118,644	123,303	130,700	139,924	149,988	159,893	1,650	1.2
Central Qld SA4	226,314	230,866	240,952	253,943	266,946	279,470	2,126	0.8
Queensland	4,848,877	5,261,567	5,722,780	6,206,566	6,686,604	7,161,661	92,511	1.6
Capricorn Coast and Rockhampton as a % of CQ SA4	52.4	53.4	54.2	55.1	56.2	57.2
Capricorn Coast and Rockhampton as a % of Queensland	2.4	2.3	2.3	2.3	2.2	2.2

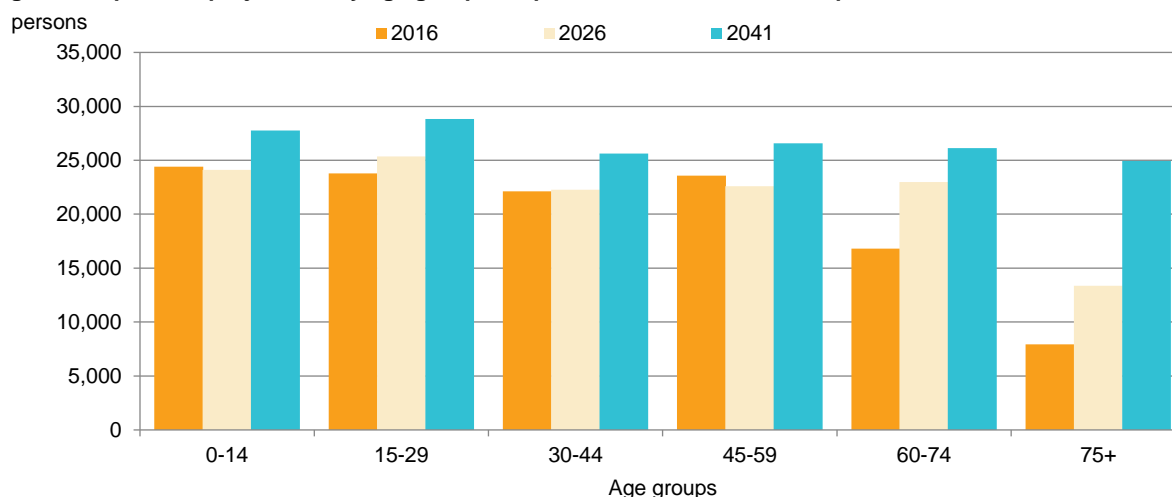
SA4 = Statistical area level 4 .. = not applicable

(a) Medium series.

Source: Queensland Government Population Projections, 2018 edition (medium series).

All age groups are projected to experience growth; however, the greatest percentage growth is being projected in the 60 to 74 years (55.5%) and over 75 years age groups (214.0%).

Figure 9 Population projections by age groups, Capricorn Coast and Rockhampton, 2016, 2026 and 2041



Source: Queensland Government population projections, 2018 edition (medium series), Queensland Government Statistician's Office, Queensland Treasury and Trade.

EMPLOYMENT

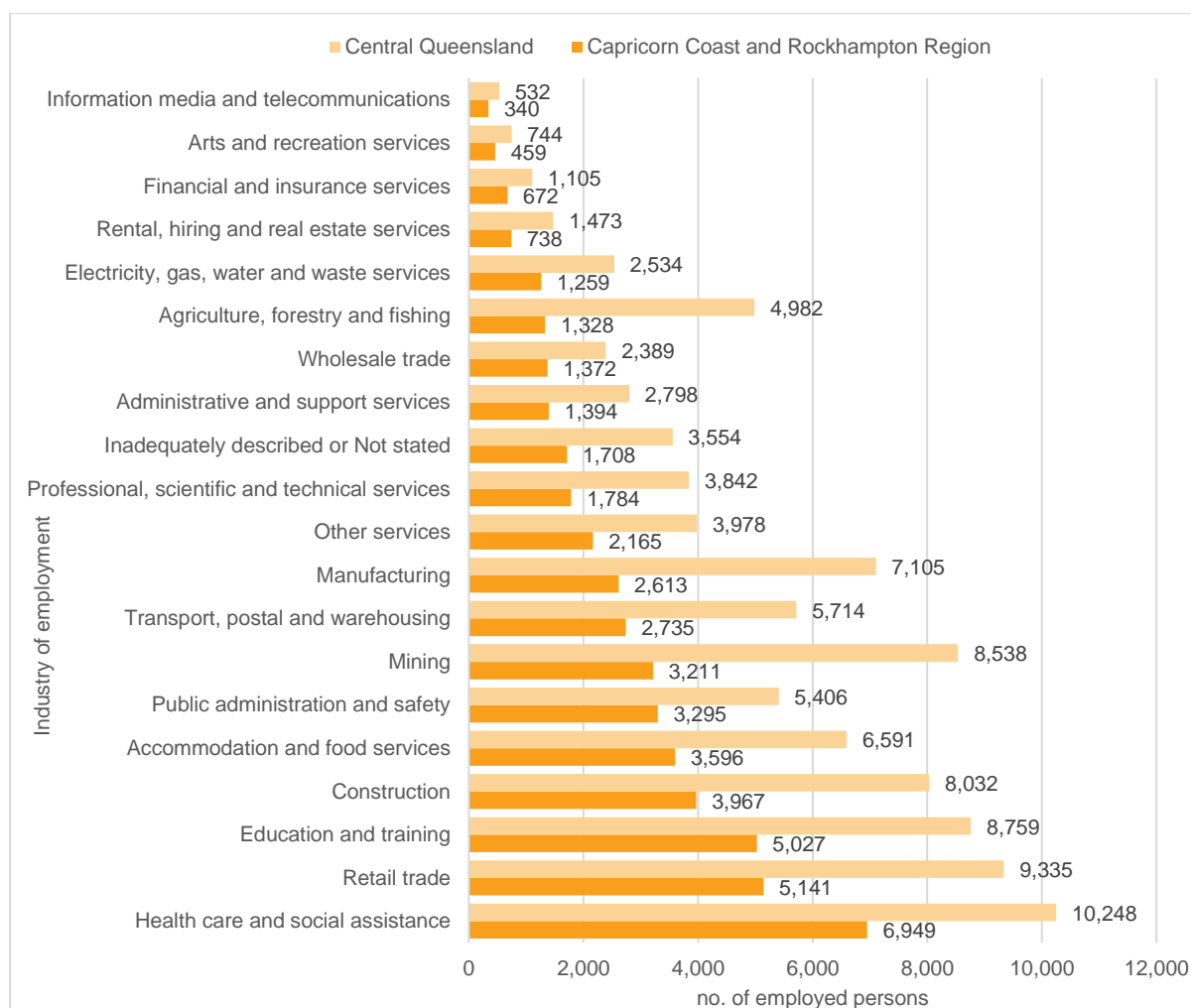
Quick stats

- 2016 Census largest employing industry - health care and social assistance 14.0%
- 2011-2016 highest percentage growth of employed persons – mining industry
- 2011-2016 highest increase in number of employed persons – health care and social assistance
- 2016 Census largest occupational group – technicians and trade workers
- 2016 Census 2,871 workers in the Capricorn Coast and Rockhampton area resided outside the region.
- March quarter 2020 labour force – 64,277 persons.
- March quarter 2020 unemployment rate – 6.7%.
- March quarter 2020 estimated number of unemployed persons – 4,277 persons.
- 2016 Census 85.5% of employed residents worked within the region
- 2016-17 average total personal income - \$59,925
- 2016-17 median total personal income - \$49,469
- 2016-17 average employee income - \$58,781

Employment by Industry

At the time of the 2016 Census, health care and social assistance was the largest employing industry in the Capricorn Coast and Rockhampton area, accounting for 6,949 (14.0%) of the region's employed workforce. Other significant industries included retail trade (10.3%), education and training (10.1%) and construction (8.0%).

Table 3 Employed persons (a)(b) by industry, Capricorn Coast and Rockhampton and Central Queensland SA4, 2016



(a) Based on usual residence.

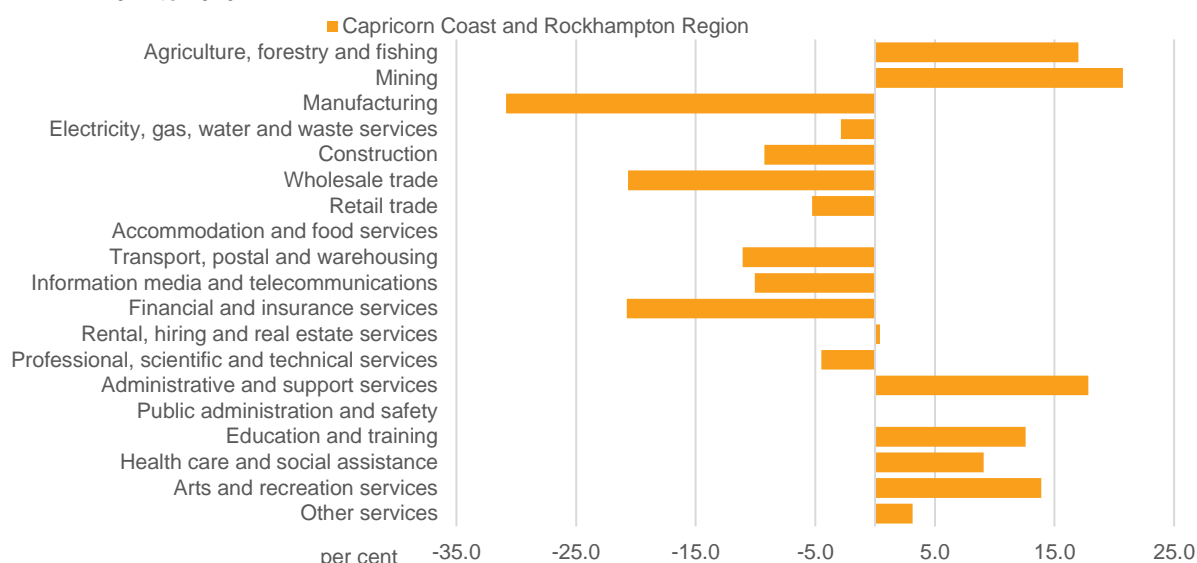
(b) Aged 15 years and over.

(c) Based on Australian Bureau of Statistics, Australian and New Zealand Standard Industrial Classification 2006

Source: Australian Bureau of Statistics, Census of Population and Housing, 2016, *General Community Profile – G51*.

Mining experienced the highest percentage growth of employed persons by industry between 2011 and 2016 at 20.7%, followed by administrative and support services (17.8%), and agriculture, forestry and fishing (17.0%). Persons employed in financial and insurance service experienced the largest decline (–20.8%). Between 2011 and 2016, health care and social assistance had the greatest increase in the number of persons employed of all industries (579 persons). Manufacturing had the largest decrease in persons employed of all industries (–1,166 persons).

Figure 10 Percentage change in employed persons (a) (b) by industry (c), Capricorn Coast and Rockhampton, 2011 to 2016



(a) Based on place of usual residence.

(b) Aged 15 years and over.

(c) Based on Australian Bureau of Statistics, Australian and New Zealand Standard Industrial Classification 2006.

Source: Australian Bureau of Statistics, Census of Population and Housing, 2016, *Time Series Profile – T34*.

Occupation

At the time of the 2016 Census, the largest occupational group of residents in the Capricorn Coast and Rockhampton area was technicians and trade workers (8,462 persons), followed by professionals (7,907 persons) and clerical and administrative workers (6,450 persons). All occupations experienced growth between the 2006 and 2016 censuses, while some contracted between 2011 and 2016. The greatest increases were community and personal service workers (41.8%) and machinery operators and drivers (28.1%).

Figure 11 Employed persons (a) (b) (c) by occupation (d), Capricorn Coast and Rockhampton, 2006, 2011 and 2016



(a) Based on place of usual residence.

(b) Aged 15 years and over.

(c) Based on Australian Bureau of Statistics, Australian Standard Classification of Occupations.

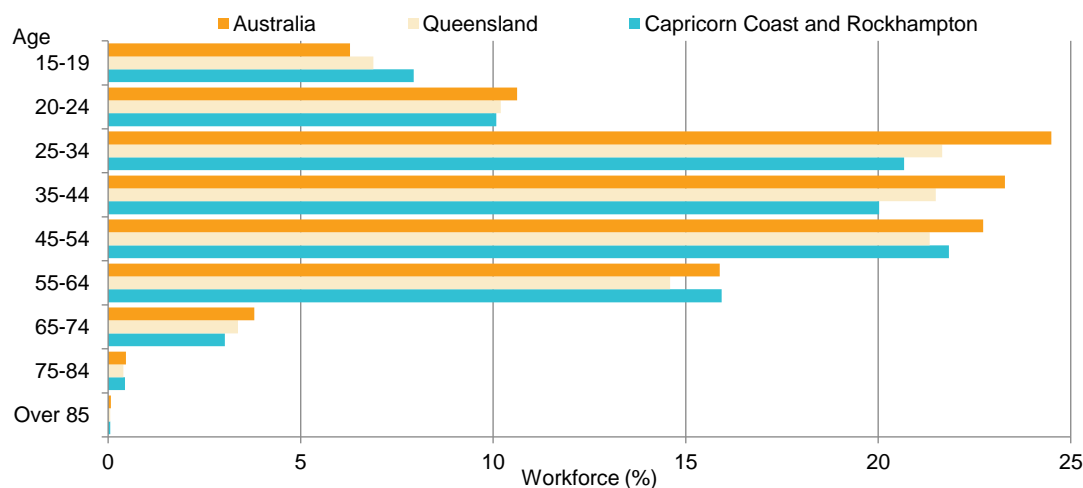
Source: Australian Bureau of Statistics, Census of Population and Housing, 2016, *Time Series Profile – T35*.

Age

The workforce profile for the Capricorn Coast and Rockhampton area in 2016 showed a higher proportion of workers in the younger age groups (15-19 years) compared to State and National averages.

The proportion of workers in the 25-44 years age group was significantly lower in the Capricorn Coast and Rockhampton area than for State or National averages.

Figure 12 Labour force by age group, 2016

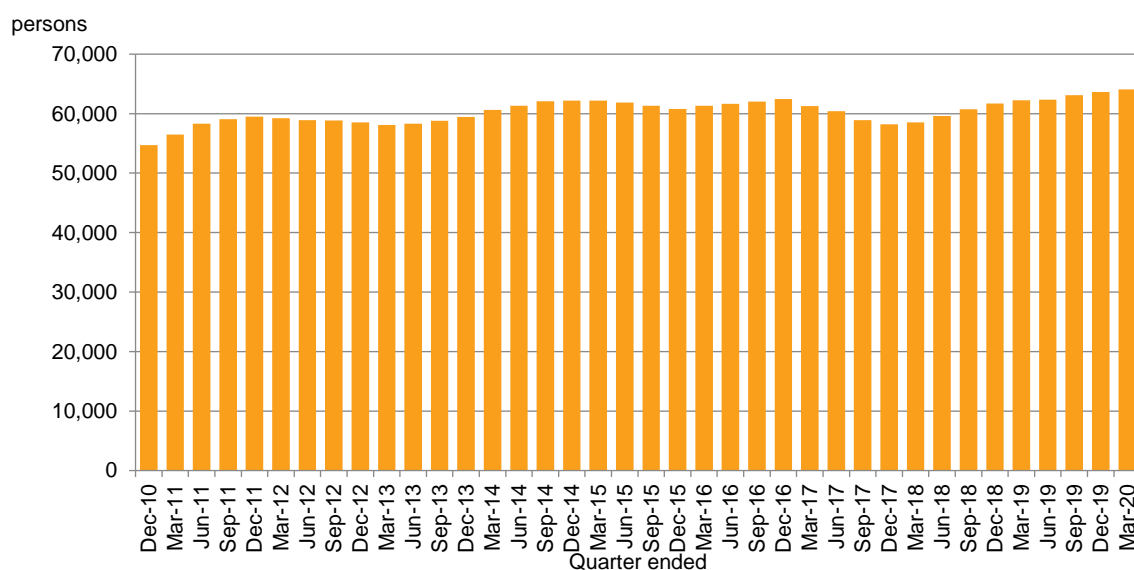


Source: ABS, *Census of Population and Housing, 2016, General Community Profile – G43*.

Labour force

The total estimated labour force in the Capricorn Coast and Rockhampton area for the March quarter 2020 was 64,043 persons. Between the December quarter 2010 and March quarter 2020, the average annual growth rate of the labour force in the Capricorn Coast and Rockhampton area was 1.8%.

Figure 13 Labour force (a) (b), Capricorn Coast and Rockhampton, 2010 to 2020



(a) Estimates of unemployment and the unemployment rate at the regional level can display significant variability and should be viewed with caution. Quarter-to-quarter comparisons may not be indicative of actual movements in the labour market. It is therefore recommended that year-on-year comparisons be used.

(b) Based on smoothed (four quarter average) data.

Source: Australian Government Department of Employment, *Small Area Labour Markets Australia* various editions.

Unemployment

Synthetic estimates from the Australian Department of Employment indicate the unemployment rate in the Capricorn Coast and Rockhampton area in the March quarter 2020 was 6.7%, a 0.2 percentage points increase from the same quarter in 2018. Unemployment rates rose from the September quarter 2019 following an extended downward trend suggesting that increased numbers of people were now looking for work. The unemployment rate for the region in the March quarter 2020 was 0.6 percentage points higher than the rate for Queensland.

The estimated number of unemployed persons in the Capricorn Coast and Rockhampton area for the March quarter 2020 was 4,277 persons. This was a decrease of 338 unemployed persons since the previous quarter.

Figure 14 Unemployment rate (a) (b), Capricorn Coast and Rockhampton area and Queensland, December quarter 2010 to March quarter 2020 (c)

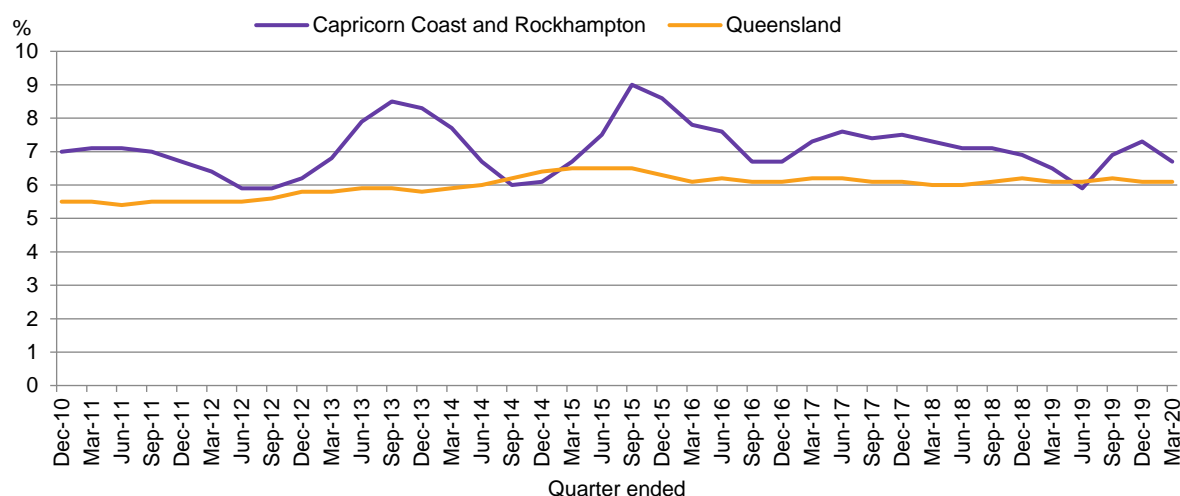
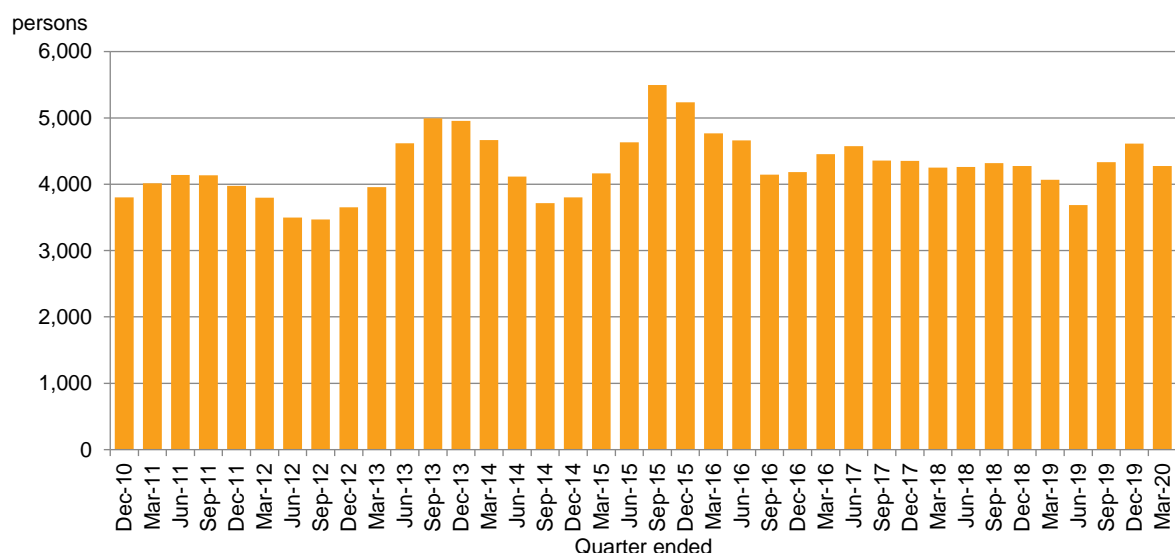


Figure 15 Unemployed persons (a) (b), Capricorn Coast and Rockhampton, December quarter 2010 to March quarter 2020 (c)



(a) Estimates of unemployment and the unemployment rate at the regional level can display significant variability and should be viewed with caution. Quarter-to-quarter comparisons may not be indicative of actual movements in the labour market. It is therefore recommended that year-on-year comparisons be used.

(b) Based on smoothed (four quarter average) data.

(c) Smoothed data (data based on four quarter average) is not available prior to December quarter 2010.

Source: Australian Government Department of Employment, *Small Area Labour Markets Australia* various editions.

Journey to Work

At the time of the 2016 Census, 45,459 people worked in the Capricorn Coast and Rockhampton area. Of these persons, 93.4% resided in the region, while 6.6% (2,987 persons) resided elsewhere. Four hundred and forty persons resided in Gold Coast City Council and worked in the Capricorn Coast and Rockhampton area, while 145 persons resided in other states and territories and worked in the region.

Table 4 Employed persons (a)(b) by place of usual residence (c), Capricorn Coast and Rockhampton 2016

Place of usual residence	Persons	%
Capricorn Coast and Rockhampton	42,472	93.4
Gold Coast (C)	440	1.0
Brisbane (C)	377	0.8
Sunshine Coast (R)	368	0.8
Ipswich (C)	184	0.4
Moreton Bay (R)	168	0.4
Gladstone (R)	148	0.3
Mackay (R)	136	0.3
Central Highlands (R)	131	0.3
Logan (C)	113	0.2
Banana (S)	73	0.2
Cairns (R)	63	0.1
Toowoomba (C)	73	0.2
Elsewhere in Queensland	523	1.2
Elsewhere in Australia	145	0.3
<i>Total persons residing outside the Capricorn Coast and Rockhampton area</i>	<i>2,987</i>	<i>6.6</i>
No usual address	45	0.1
Total	45,459	100.0

At the time of the 2016 Census, 49,746 employed persons resided in the Capricorn Coast and Rockhampton area. Of these persons, 85.4% worked within the region, while 10.5% (5,215 persons) worked elsewhere. This included 1,598 persons who worked in the Central Highlands Regional Council area, 1,024 persons who worked in the Isaac Regional Council area and 311 usual residents of the region who worked in other states and territories.

Table 5 Employed persons (a), usual residents of the Capricorn Coast and Rockhampton by location of workplace (b) (c), 2016

Place of work	Persons	%
Capricorn Coast and Rockhampton	42,480	85.4
Central Highlands (R)	1,598	3.2
Isaac (R)	1,024	2.1
Banana (S)	383	0.8
Gladstone (R)	264	0.5
Gold Coast (C)	294	0.6
Brisbane (C)	535	1.1
Mackay (R)	112	0.2
Sunshine Coast (R)	114	0.2
Western Downs (R)	26	0.1
Townsville (C)	50	0.1
Elsewhere in Queensland	482	1.0
Elsewhere in Australia	311	0.6
<i>Total persons with place of work outside the Capricorn Coast and Rockhampton</i>	<i>5,215</i>	<i>10.5</i>
Undefined or not stated or no fixed address	2,051	4.1
Total	49,746	100.0

C = City R = Regional Council

(a) Aged 15 years and over.

(b) Place of work is coded from the workplace address question on the Census form and relates to where the person worked in the week prior to census night.

(c) Place of work is based on local government areas as per Australian Bureau of Statistics, Australian Statistical Geographic Standard.

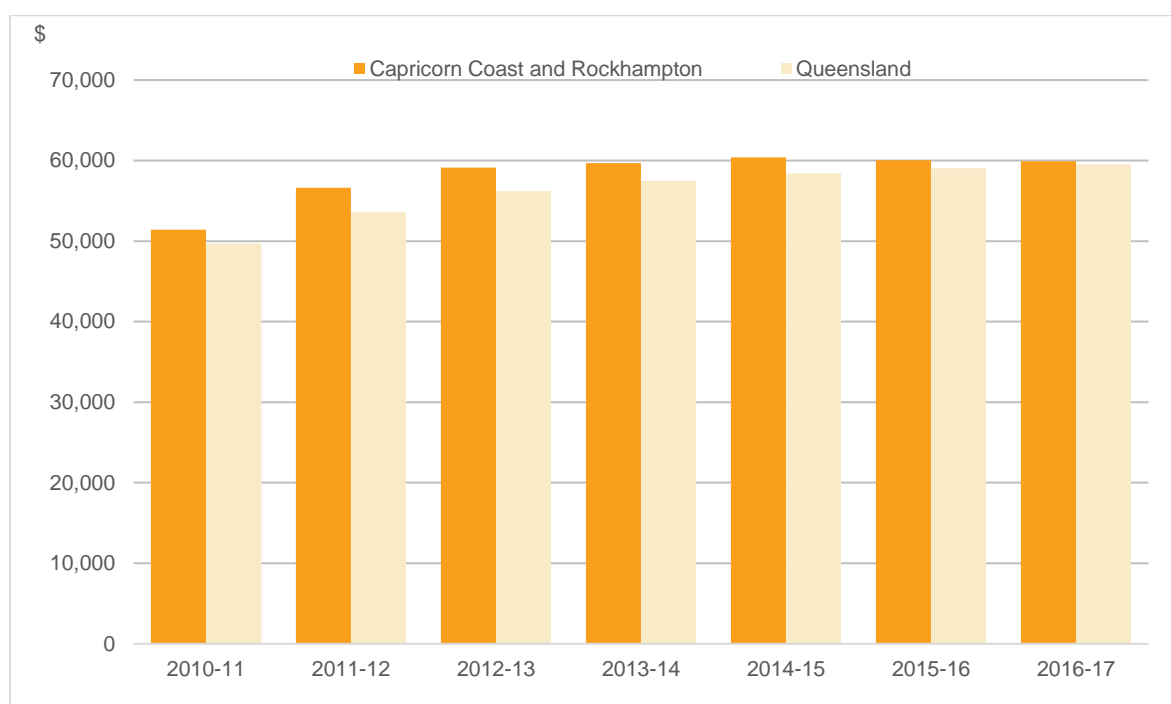
Source: Australian Bureau of Statistics, Census of Population and Housing, 2016

Estimates of Personal Income

Estimates of personal income show that the mean total personal income (excluding Government pensions and allowances) in the Capricorn Coast and Rockhampton region for the 2016-17 financial year was \$59,925. The mean employee income in the Capricorn Coast and Rockhampton area for the 2016-17 financial year was \$58,781. This was \$1,646 more than the mean employee income for Queensland (\$57,135).

Between the financial years 2010-11 and 2016-17, the mean total personal income (excluding Government pensions and allowances) in the Capricorn Coast and Rockhampton area increased by \$8,496 (16.5%). This was less than Queensland for the same period (\$9,841 or 19.8%).

Figure 16 Mean income from wages and salaries (a), Capricorn Coast and Rockhampton area and Queensland, 2011-17

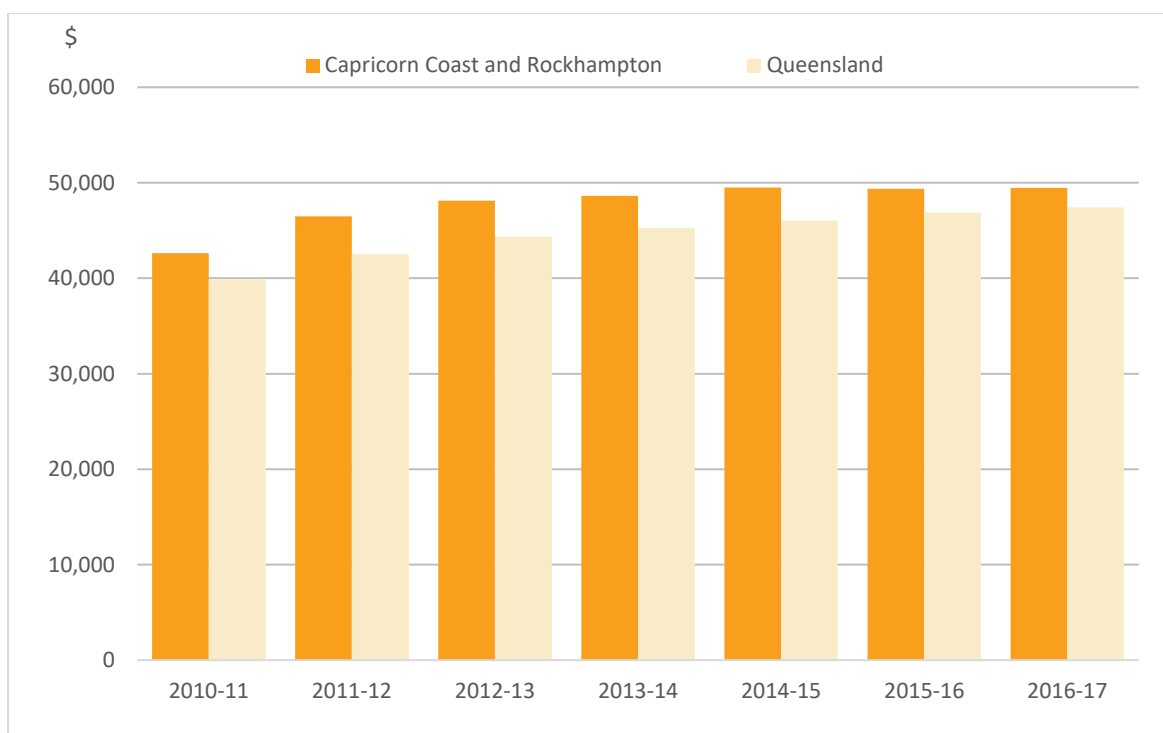


(a) Wage and salary income, as reported on the income tax return, includes gross income as well as allowances, commissions, bonuses, tips, gratuities, consultation fees, honoraria, termination pays, lumps sums and other payments for services.

Source: Australian Bureau of Statistics, *Estimates of Personal Income for Small Areas, 2011-17*, cat. no. 6524.0.55.002.

The mean measures the total income divided by the number of income earners. Because income is not equally distributed, as there are generally more low income earners with fewer high income earners, using medians can be a more accurate reflection of income data.

The median total personal income (excluding Government pensions and allowances) in the Capricorn Coast and Rockhampton area for the 2016-17 financial year was \$49,469. This was \$2,044 more than the median total income for Queensland (\$47,425). Between the financial years 2010-11 and 2016-17, the median total personal income (excluding Government pensions and allowances) in the Capricorn Coast and Rockhampton area increased by \$6,834 (16.0%). This was less than Queensland for the same period (\$7,549 or 18.9%).



(a) Wage and salary income, as reported on the income tax return, includes gross income as well as allowances, commissions, bonuses, tips, gratuities, consultation fees, honoraria, termination pays, lumps sums and other payments for services.

Source: Australian Bureau of Statistics, *Estimates of Personal Income for Small Areas, 2011-17*, cat. no. 6524.0.55.002.

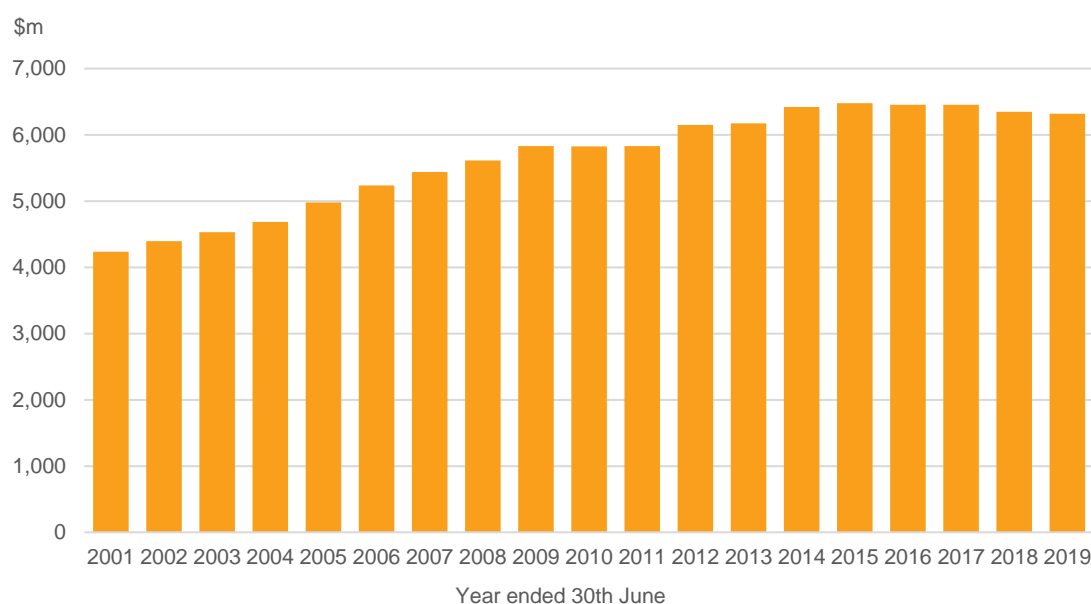
INDUSTRY

Quick stats

- 2018-19 gross regional product, Capricorn Coast and Rockhampton Region - \$6.3b
- Resources contribution to the economy \$2.0b gross regional product
- Total gross value of agricultural product in 2016 - \$162.4m
- Cattle and calves slaughtering continued to be the most valuable agricultural product
- 81.2% of agricultural production – livestock slaughtering
- \$31,657.4m – commodity exports from Gladstone Port, 2018-19
- Coal, coke and briquettes – second main commodity exported in dollar value terms, 2018-19
- China– major country of destination for exports, 2018-19
- 49.1m tonnes – overseas exports of coal, coke and briquettes, 2018-19

Gross Regional Product

The gross regional product (GRP) in the Capricorn Coast and Rockhampton Region was estimated to be \$6,320 million in 2018/19, a decrease of 0.4% from the previous year.



Data is based on 2016-17 constant prices for all years.
Source: National Institute of Economic and Industry Research (NIEIR) 2018.

In 2018-19, the Queensland Resources sector provided \$377m in wages paid directly to 2,437 full time employees and \$591m for goods and services purchased locally in the Capricorn Coast and Rockhampton Region. Flow-on benefits of local spending and employment supported a further 9,092 full time employees and \$1,092m in additional value add.

Table 6 Resources industry contribution, \$M, Local Government Areas of Fitzroy Region, 2018-19

	Banana (S)	Central Highlands (R)	Gladstone (R)	Livingstone (R)	Rockhampton (R)	Fitzroy
Direct Contributions						
Wages (\$M)	160	437	455	173	204	1,400
Goods and Services purchased locally (\$M)	264	810	1,800	127	464	3,400
Flow-on Benefits						
Additional value add (\$M)	445	888	1,300	332	760	5,300
Gross Regional Product (\$M)	869	2,100	3,500	631	1,400	10,200
Royalties (\$M) shared across Queensland						5,200

Source: Queensland Resources Council, *What are Resources Worth* (various locations), 2019

Over the ten years to 2017-18, the GRP of the Capricorn Coast and Rockhampton Region recorded an average annual growth of 1.0%. Between 2000-01 to 2007-08, the average annual growth rate was 5.4%.

Other local government areas in Queensland have also experienced a slowing of the GRP average annual growth rate.

Table 7 Headline GRP, Local Government Areas, 2000-01 to 2017-18

	2000-01	2007-08	2010-11	2017-18	Ave annual growth 2001-2018	Ave annual growth 2008-2018
Bundaberg	2.673	3.83	3.864	4.104	3.1	0.7
Cairns	4.883	7.809	7.638	8.831	4.8	1.3
Gladstone	2.355	3.832	4.068	4.773	6.0	2.5
Livingstone	0.797	1.083	1.126	1.319	3.9	2.2
Rockhampton	3.236	4.479	4.52	4.826	2.9	0.8

Data are based on a 2016-17 price base for all years. NEIR-ID data are inflation adjusted each year to allow direct comparison, and annual data releases adjust previous years' figures to a new base year.

Source: National Institute of Economic and Industry Research (NIEIR) ©2018. Compiled and presented in economy.id by .id, the population experts.

The industry composition of the Capricorn Coast and Rockhampton Region's economy based on estimates of value-added shows health care and social assistance is the prominent industry in the region, accounting for 10.4% of value added in 2018–19, up 1.9 percentage points from 2008–09. Mining, at 9.2%, and electricity, gas and water supply, at 9.2%, were the next largest contributors to region's economy. The largest change in composition, other than health care and social assistance, was observed in mining, up 5.0 percentage points from 2008–09. Transport, postal and warehousing recorded the largest fall in its share of value added, down 1.6 percentage points, followed by manufacturing, down 1.4 percentage points.

Table 8 Composition of value added (a), Capricorn Coast and Rockhampton Region, 2008–09 and 2018–19

Industry	Composition		Change in composition
	2008–09	2018–19	
	— % —		percentage points
Agriculture, forestry and fishing	3.8	3.4	-0.4
Mining	2.7	7.7	5.0
Manufacturing	8.2	6.7	-1.4
Electricity, gas and water supply	11.6	10.9	-0.7
Construction	9.6	8.9	-0.7
Wholesale trade	4.8	3.8	-1.0
Retail trade	6.0	5.7	-0.3
Accommodation and food services	3.5	3.1	-0.4
Transport, postal and warehousing	7.5	5.9	-1.6
Information media and telecommunications	1.0	0.9	-0.1
Financial and insurance services	5.7	5.5	-0.2
Rental, hiring and real estate services	2.3	2.5	0.2
Professional, scientific and technical services	3.3	3.8	0.6
Administrative and support services	2.5	3.0	0.5
Public administration and safety	6.9	6.4	-0.4
Education and training	8.5	7.9	-0.6
Health care and social assistance	8.6	10.4	1.9
Arts and recreational services	0.5	0.5	-0.1
Other services	3.0	2.9	-0.2
Gross value added	100.0	100.0	..

.. = not applicable

Data are based on a 2016-17 price base for all years. NEIR-ID data are inflation adjusted each year to allow direct comparison, and annual data releases adjust previous years' figures to a new base year.

Source: National Institute of Economic and Industry Research (NIEIR) ©2019. Compiled and presented in economy.id by .id, the population experts.

Agricultural Production

Agriculture, forestry and fishing accounted for 15.4% of all businesses registered in the Capricorn Coast and Rockhampton area as at 30 June 2019. Over four-fifths (83.4%) of these businesses were non-employing and almost two-fifths (39.5%) had a turnover of less than \$50,000 per annum.

Figure 17 Counts of businesses by employee size in agriculture, forestry and fishing industry, Capricorn Coast and Rockhampton, as at 30 June 2019

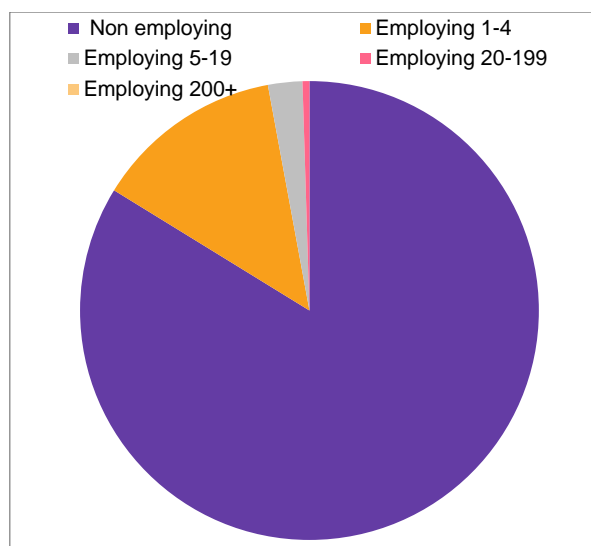
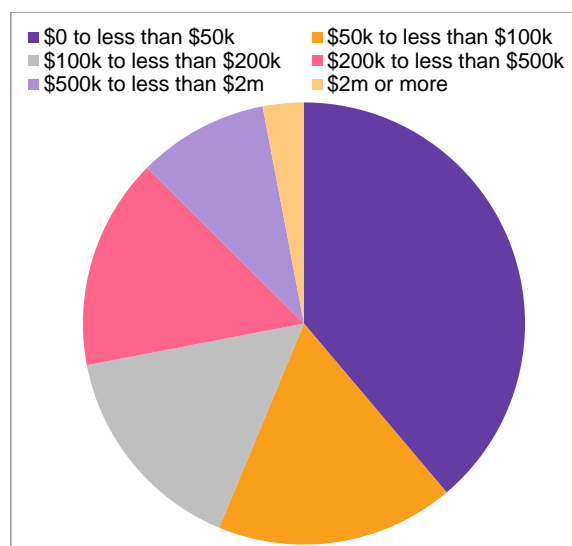


Figure 18 Counts of businesses by turnover in agriculture, forestry and fishing industry, Capricorn Coast and Rockhampton, as at 30 June 2019



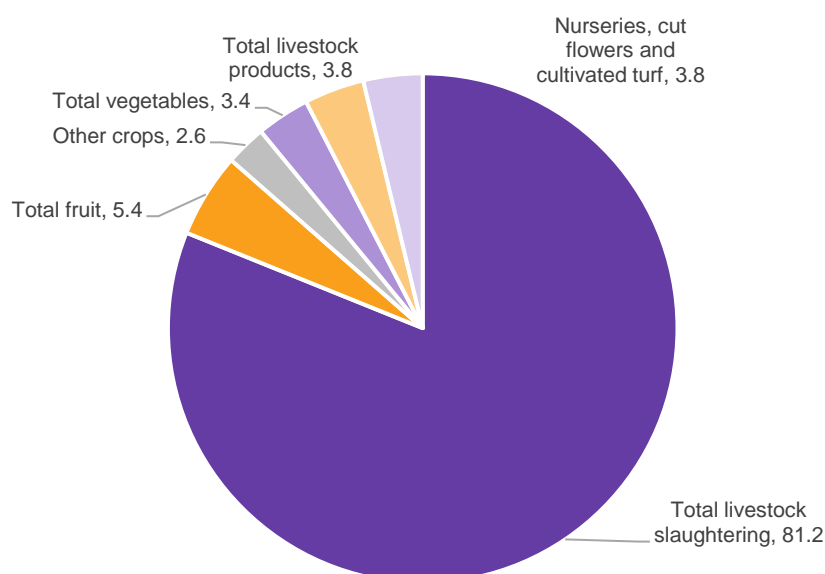
(a) It is not currently possible to account for those businesses which operate out of several locations, other than at their main location. This is particularly relevant for larger businesses, which commonly establish outlets in numerous states and regions across Australia. The reason for this is that data pertaining to individual business locations are not currently available from the Australian Bureau of Statistics Business Register. Users should therefore be aware of this limitation when using counts of businesses included in this table.

(b) Australian Bureau of Statistics, Australian and New Zealand Standard Industrial Classification (ANZSIC), 2006 edition (ABS cat. no.1292.0).

Source: Australian Bureau of Statistics, 8165.0, *Counts of Australian Businesses, including Entries and Exits*, various editions.

In 2015-16, livestock slaughtering made up 81.2% of the Capricorn Coast and Rockhampton area's total value of agricultural production. Fruit crops were the second highest agricultural commodity (5.4%), followed by vegetables (3.4%).

Figure 19 Percentage of agricultural commodity value (a) (b), Capricorn Coast and Rockhampton, 2015-16 (c)



Source: Australian Bureau of Statistics, *Value of Agricultural Commodities Produced, Australia, 2015-16*, cat. no. 7503.0.

The total gross value of agricultural production in the Capricorn Coast and Rockhampton area was \$162.4 million, or 11.8% of the Central Queensland SA4 total. The most valuable agricultural product in the region for 2015-16 was cattle and calves slaughtered (\$129.3 million). Cattle and calves slaughtered accounted for 12.4% of the Central Queensland SA4 gross agricultural production.

Table 9 Value (a) of agricultural production (b) for the Capricorn Coast and Rockhampton, 2015-16 (c)

Agricultural commodity	Capricorn Coast and Rockhampton 2015-2016	Region as a proportion of Fitzroy SA4 2015-16	Region as a proportion of Queensland 2015-16
	\$ m	— % —	
Pasture, cereal and other crops cut for hay	2.0	14.0	1.4
Cereals for grain	1.2	1.6	0.1
Cotton	na	na	na
Broadacre crops - other crops	0.9	1.2	0.1
Nurseries, cut flowers and cultivated turf	6.1	77.2	2.2
<i>Total crops</i>	<i>24.5</i>	<i>8.0</i>	<i>0.4</i>
<i>Total vegetables</i>	<i>5.5</i>	<i>50.0</i>	<i>0.5</i>
Mangoes	1.7	56.7	2.0
Lychees	na	na	na
Orchard fruit - other	0.9	40.9	0.4
Pineapples	6.1	100.0	12.1
<i>Total fruit</i>	<i>8.7</i>	<i>19.8</i>	<i>0.8</i>
Cattle and calves slaughtered	129.3	12.4	2.2
Pigs slaughtered	0.4	3.6	0.1
Poultry slaughtered	2.0	66.7	0.3
Other livestock slaughtered	0.0	0.0	0.0
<i>Total livestock slaughtering</i>	<i>131.8</i>	<i>12.5</i>	<i>1.9</i>
Eggs produced for human consumption	3.1	72.1	1.5
Milk	3.0	40.5	1.3
Other livestock products	0.0	0.0	0.0
<i>Total livestock products</i>	<i>6.2</i>	<i>52.1</i>	<i>1.2</i>
Total agriculture	162.4	11.8	1.2

na = not available

(a) Values represented in this collection are gross value (i.e. the value placed on recorded production at wholesale prices, realised in the market place).

(b) The estimates in this collection are based on information obtained from a sample drawn from the total agricultural business population in scope of the collection, and are subject to sampling variability. Caution should therefore be exercised when interpreting the figures in this collection.

(c) Quantity data for most crops have been collected from the 2011 Agricultural Census, remaining commodity data are obtained from other ABS collections with some information from non ABS sources.

Note: The scope for the 2015-16 Agricultural Census was for all agricultural business with an Estimated Value of Agricultural Operations (EVAO) of \$40,000 or greater compared to the previous Collection which had a scope of EVAO of \$5,000 or greater.

Source: Australian Bureau of Statistics, *Value of Agricultural Commodities Produced, Australia, 2015-16*, cat. no. 7503.0.

Mineral Production

In 2007–08, coal had the highest value of production within the mining industry for the Fitzroy Statistical Division, followed by crude petroleum and gold. The total value of mining production for the Fitzroy Statistical Division accounted for 25.8% of the Queensland total.

Table 10 Quantity and value of minerals produced, Fitzroy Statistical Division (a), 2007–08

Commodity	Unit of measure	Quantity produced			Value of production (b)
		Fitzroy Statistical Division	Queensland	Fitzroy Statistical Division as a percentage of Queensland (%)	Fitzroy Statistical Division (\$m)
Coal, black	tonnes	77,114,986	182,515,146	42.3	n.a.
Crude petroleum (c)	kilolitres	1,972,459,223	5,458,397,143	36.1	n.a.
Gold	kilos	5,667	25,939	21.8	n.a.
Limestone	tonnes	3,001,617	3,378,446	88.8	n.a.
Magnesium rich materials	tonnes	124,681	151,874	82.1	n.a.
Salt	tonnes	58,409	58,409	100.0	n.a.
Clays	tonnes	316,671	1,401,456	22.6	n.a.
Dimension stone	tonnes	5,876	55,140	10.7	n.a.
Gems and ornamental stones	0.5
Silica	tonnes	150,775	2,463,399	6.1	n.a.
Zeolite	tonnes	1,157	1,157	100.0	n.a.
Fitzroy Statistical Division					6,913.9
Queensland					26,768.6
Fitzroy Statistical Division as a percentage of Queensland					25.8

n.a. = not available due to confidentiality reasons

.. = not applicable

(a) Based on Australian Standard Geographical Classification 2008.

(b) Minerals ranked in order from highest value of production to lowest value of production.

(c) In the Fitzroy Statistical Division, this comprises coal methane gas.

Source: Queensland Mines and Energy - Department of Employment, Economic Development and Innovation (unpublished data).

Exports from Queensland Ports

Merchandise goods exported from Queensland ports totalled \$90,164.2 million in 2018-19, an increase of 17.4% from the previous financial year. Exports from the Gladstone Port in the Central Queensland region totalled \$31,657.4 million in 2018-19, an increase of 30.7% from the previous year. Gladstone Port exports were 35.1% of the total value of Queensland's merchandise export.

Table 11 Commodities exported by Queensland ports, 2018-19p

Queensland ports	Value of exports	Proportion of Queensland exports
	\$m	%
Abbot Point	5,008.2	5.6
Brisbane	17,907.4	19.9
Bundaberg	7.8	0.0
Cairns	314.4	0.3
Gladstone	31,657.4	35.1
Hay Point	27,670.4	30.7
Innisfail	4.9	0.0
Karumba	97.0	0.1
Mackay	136.8	0.2
Thursday Island	0.2	0.0
Townsville	6,284.2	7.0
Weipa	851.3	0.9
Other (a)	224.2	0.2
Queensland	90,164.2	100.0

(a) Includes data for a number of smaller Queensland ports which could not be separately assigned to a region.

Source: Australian Bureau of Statistics, *International merchandise exports, Australia*, cat. no. 5368.0, unpublished data.

In dollar value terms in 2018-19, combined confidential items was the main type of commodity exported from the Gladstone Port (69.7%), followed by coal, coke and briquettes (26.2%). The specialisation ratio reflects the importance of a commodity exported from the region compared with Queensland as a whole. The major commodity with the highest specialisation ratio for Gladstone Port was combined confidential items (2.2), followed by inorganic chemicals (2.3).

Table 12 Principal commodity exports from Gladstone Port and total Queensland ports, 2018-19p(a)

Commodity	Gladstone Port		Queensland		Specialisation ratio (a)
	Value of exports	Proportion of total	Value of exports	Proportion of total	
	\$m	%	\$m	%	
Combined confidential items	22,057.9	69.7	27,882.0	32.0	2.2
Coal, coke and briquettes	8,309.7	26.2	37,563.9	43.2	0.6
Non-ferrous metals	904.7	2.9	4,307.3	4.9	0.6
Inorganic chemicals	147.0	0.5	174.9	0.2	2.3
Cork and wood	79.2	0.3	229.4	0.3	0.9
Metalliferous ores and metal scrap	55.2	0.2	4,194.0	4.8	0.0
Live animals (excl fish, crustaceans, molluscs and aquatic invertebrates of SITC Division 03)	40.8	0.1	466.4	0.5	0.2
Vegetables and fruit	25.5	0.1	800.0	0.9	0.1
Animal oils and fats	14.9	0.0	185.7	0.2	0.2
Cereals and cereal preparations	12.2	0.0	209.6	0.2	0.2
Total (b)	31,657.4	100.0	90,164.2	100.0	..

.. = not applicable

(a) The ratio of the percentage for the region to the percentage for Queensland. (b) Includes other commodities.

Source: Australian Bureau of Statistics, *International merchandise exports, Australia*, cat. no. 5368.0, unpublished data.

In 2018-19, China was the major country of destination for commodity exports from Gladstone Port, accounting for 40.7% of the value of commodities exported, followed by Japan (17.6%) and India (13.0%). The major countries of destination with the highest specialisation ratio for Gladstone Port were Russian Federation (2.5), Malaysia (1.8) and Canada (1.8).

Table 13 Major countries of destination for exports from Gladstone Port and Queensland, 2018-19p

Country	Gladstone Port		Queensland		Specialisation ratio (a)
	Value of exports	Proportion of total	Value of exports	Proportion of total	
	\$m	%	\$m	%	
China	12,876.9	40.7	29,233.2	32.4	1.3
Japan	5,577.1	17.6	12,600.7	14.0	1.3
India	4,123.1	13.0	10,742.1	11.9	1.1
Republic of Korea	3,909.1	12.3	9,547.1	10.6	1.2
Malaysia	1,350.5	4.3	2,153.2	2.4	1.8
Canada	469.8	1.5	751.6	0.8	1.8
Russian Federation	427.0	1.3	463.9	0.5	2.5
Taiwan	424.1	1.3	3,330.9	3.7	0.4
Oman	393.3	1.2	398.3	0.4	2.7
Brazil	364.7	1.2	1,024.6	1.1	1.1
Others	1,741.9	5.5	19,918.6	22.1	..
Total	31,657.4	100.0	90,164.2	100.0	..

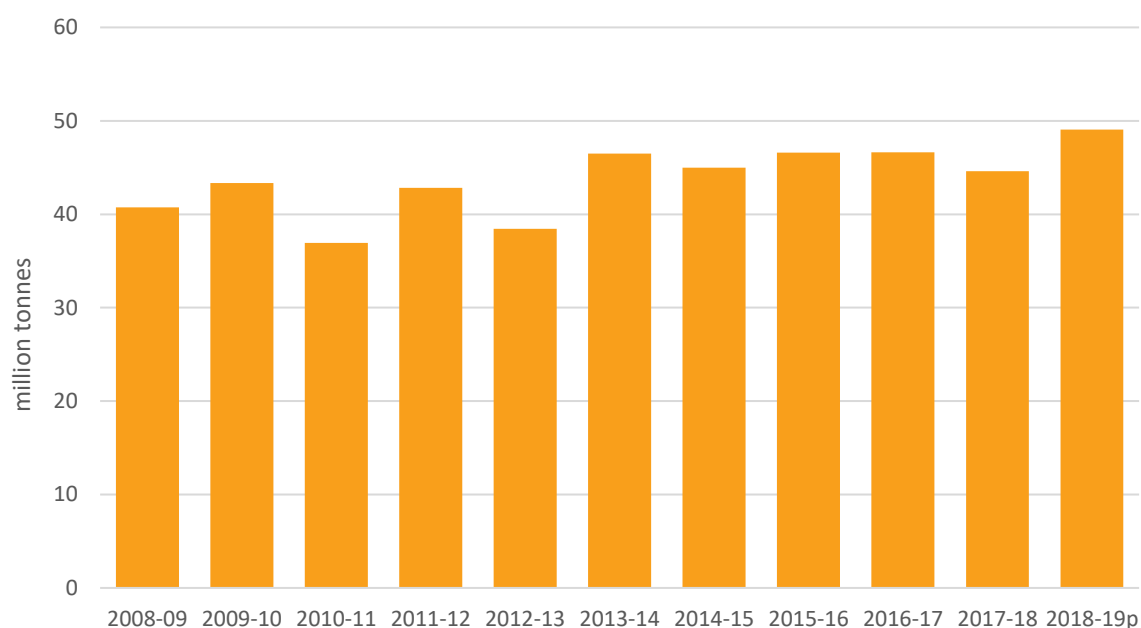
.. = not applicable

(a) The ratio of the percentage for the region to the percentage for Queensland.

Source: Australian Bureau of Statistics, *International merchandise exports, Australia*, cat. no. 5368.0, unpublished data.

In the 2018-19 financial year, overseas exports of coal, coke and briquettes from Gladstone Port totalled 49.1 million tonnes. This was 4.5 million tonnes or 10.0% more than the 2017-18 financial year.

Figure 20 Coal, coke and briquette exports from Gladstone Port, 2008-09 to 2018-19p



Australian Bureau of Statistics, *International merchandise exports, Australia*, cat. no. 5368.0, unpublished data.

In 2018-19, Queensland commodities exported overseas from Gladstone Port increased 30.7% (\$7,445.0 million) from 2017-18. The commodities exported from Gladstone Port in 2018-19 with the most significant increases in total value were combined confidential items (up \$6,027.7 million) and coal, coke and briquettes (up \$1,566.7 million). The commodities exported with decreases in total value were vegetables and fruit (down \$120.3 million or 82.5%) and animal oils and fats (down \$7.8 million or 34.4%).

Table 14 Principal commodity exports from Gladstone Port, 2017-18 and 2018-19p

Commodity	2017-18	2018-19p	Change
	— \$m —	— \$m —	%
Combined confidential items	16,030.2	22,057.90	37.6
Coal, coke and briquettes	6,743.0	8,309.70	23.2
Non-ferrous metals	991.2	904.7	-8.7
Inorganic chemicals	154.3	147.0	-4.7
Cork and wood	76.4	79.2	3.7
Metalliferous ores and metal scrap	14.9	55.2	270.5
Live animals (excl. fish, crustaceans, molluscs and aquatic invertebrates of SITC Div. 03)	9.3	40.8	338.7
Vegetables and fruit	145.8	25.5	-82.5
Animal oils and fats	22.7	14.9	-34.4
Cereals and cereal preparations	7.7	12.2	58.4
Total (a)	24,212.4	31,657.4	30.7

(a) Total includes other commodities.

Australian Bureau of Statistics, *International merchandise exports, Australia*, cat. no. 5368.0, unpublished data.

BUSINESS

Quick stats

- 27,490 entities with an active Australian Business Number
- 8,074 businesses registered in 2018-19
- 18.4% of registered businesses were in construction
- 24.1% of businesses reported turnover \$0 < \$50,000

Business Counts

In October 2019, the total number of entities with an active Australian Business Number (ABN) listed with the Australian Tax Office (ATO) in the Capricorn Coast and Rockhampton area was 27,490.

The greatest percentage of businesses listed with the ATO within the Capricorn Coast and Rockhampton area in October 2019 was individual/sole trader (47.6%), followed by Australian private company (14.5%) and family partnership (12.5%). Other than government statutory entities, co-operatives made up the smallest percentage of business entities (0.0%).

Table 15 Breakdown of entity types for active ABNs in the Capricorn Coast and Rockhampton (a), October 2019

Type	Total number	Percent
ATO Regulated Self-Managed Superannuation Fund	1,701	6.2
Australian Private Company	3,986	14.5
Australian Public Company	58	0.2
Cash Management Trust	1	0.0
Co-operative	4	0.0
Corporate Unit Trust	2	0.0
Deceased Estate	68	0.2
Discretionary Investment Trust	838	3.0
Discretionary Services Management Trust	112	0.4
Discretionary Trading Trust	1,482	5.4
Family Partnership	3,425	12.5
Fixed Trust	30	0.1
Fixed Unit Trust	250	0.9
Hybrid Trust	28	0.1
Individual/Sole Trader	13,086	47.6
Limited Partnership	16	0.1
Listed Public Unit Trust	1	0.0
Local Government Entity	2	0.0
Other Incorporated Entity	757	2.8
Other Partnership	875	3.2
Other Trust	100	0.4
Other Unincorporated Entity	424	1.5
Public Trading Trust	1	0.0
State Government Entity	60	0.2
State Government Statutory Authority	1	0.0
Strata-title	181	0.7
Unlisted Public Unit Trust	1	0.0
Total	27,490	100.0

(a) Capricorn Coast and Rockhampton includes the postcode range 4698-4706, 4710, 4711 and 4714.

Source: Australian Tax Office, 'ABN Lookup Tool', 2019

In 2018-19, there were 8,074 businesses registered in the Capricorn Coast and Rockhampton area. The largest industry was construction (18.4%), followed by agriculture, forestry and fishing (15.4%) and rental, hiring and real estate services (9.6%).

Non-employing businesses made up 59.6% of all registered businesses, followed by businesses employing between one and four people (26.2%) in 2018-19.

Table 16 Counts of registered businesses (a) by industry and employment size, Capricorn Coast and Rockhampton, 2018-19

Industry	Employment size					Total business numbers	
	Non-employing	1-4	5-19	20-199	200+		
	- business numbers -					number	%
Agriculture, forestry and fishing	1,038	165	30	6	0	1,244	15.4
Mining	20	36	9	6	0	61	0.8
Manufacturing	125	55	45	10	3	243	3.0
Electricity, gas, water and waste services	26	11	3	0	0	33	0.4
Construction	768	516	182	27	0	1,489	18.4
Wholesale trade	83	46	29	6	0	149	1.8
Retail trade	165	131	112	25	0	439	5.4
Accommodation and food services	98	116	121	50	0	383	4.7
Transport, postal and warehousing	401	101	53	6	3	560	6.9
Information media and telecommunications	11	19	3	0	0	35	0.4
Financial and insurance services	437	69	18	3	0	526	6.5
Rental, hiring and real estate services	642	90	37	7	0	773	9.6
Professional, scientific and technical services	261	203	70	25	3	547	6.8
Administrative and Support Services	128	73	31	6	0	259	3.2
Public Administration and Safety	3	3	6	0	0	18	0.2
Education and Training	54	23	18	6	0	113	1.4
Health Care and Social Assistance	236	156	51	12	0	452	5.6
Arts and Recreation Services	51	24	10	3	0	107	1.3
Other Services	253	282	81	12	0	626	7.8
Not Classified	15	0	0	0	0	17	0.2
Total	4,815	2,119	909	210	9	8,074	100.0
Per cent	59.6	26.2	11.3	2.6	0.1	100.0	

.. = not applicable

(a) It is not currently possible to account for those businesses which operate out of several locations, other than at their main location. This is particularly relevant for larger businesses, which commonly establish outlets in numerous states and regions across Australia. The reason for this is that data pertaining to individual business locations are not currently available from the Australian Bureau of Statistics Business Register. Users should therefore be aware of this limitation when using counts of businesses included in this table.

(b) Australian Bureau of Statistics, Australian and New Zealand Standard Industrial Classification (ANZSIC), 2006 edition (ABS cat. no.1292.0).

Source: Australian Bureau of Statistics, *Counts of Australian Businesses, including Entries and Exits, Jun 2014 to Jun 2018*, cat. no. 8165.0.

Between the 2017--18 and 2018-19 financial years, there were changes in the number of businesses registered in Capricorn Coast and Rockhampton area. Overall, the region experienced a net gain of 19 business registrations, with increases in other services (43 businesses), agriculture, forestry and fishing (29 businesses) and arts and recreation services (14 businesses).

Industries which experienced a decreased in total number of businesses included construction (29 businesses), retail trade and rental, hiring and real estate services (both 13 businesses).

Table 17 Change in counts of registered businesses (a) by industry and employment size, Capricorn Coast and Rockhampton, 2017-18 to 2018-19

Industry	Employment size					Total change
	Non - employing	1-4	5-19	20- 199	200+	
	- Business numbers -					number
Agriculture, Forestry and Fishing	36	-19	-3	0	0	29
Mining	0	13	0	3	0	-2
Manufacturing	-2	-6	2	-11	0	-3
Electricity, Gas, Water and Waste Services	1	-1	-3	0	0	-5
Construction	0	-42	13	6	0	-29
Wholesale Trade	5	4	-2	0	0	-12
Retail Trade	-2	-12	7	-2	0	-13
Accommodation and Food Services	-15	2	-12	9	0	-6
Transport, Postal and Warehousing	-16	4	12	-3	0	-6
Information Media and Telecommunications	-10	13	0	0	0	12
Financial and Insurance Services	-5	-4	3	0	0	6
Rental, Hiring and Real Estate Services	-12	-3	-2	3	0	-13
Professional, Scientific and Technical Services	-3	7	-11	14	0	-1
Administrative and Support Services	-6	-6	2	-3	0	2
Public Administration and Safety	-3	0	0	0	0	-4
Education and Training	1	1	-6	0	0	2
Health Care and Social Assistance	8	3	-1	0	0	11
Arts and Recreation Services	14	-5	-6	0	0	14
Other Services	-4	23	-3	-3	0	43
Not Classified	-6	0	0	0	0	-6
Total	-19	-28	-10	13	0	19

(a) It is not currently possible to account for those businesses which operate out of several locations, other than at their main location. This is particularly relevant for larger businesses, which commonly establish outlets in numerous states and regions across Australia. The reason for this is that data pertaining to individual business locations are not currently available from the Australian Bureau of Statistics Business Register. Users should therefore be aware of this limitation when using counts of businesses included in this table.

(b) Australian Bureau of Statistics, Australian and New Zealand Standard Industrial Classification (ANZSIC), 2006 edition (ABS cat. no.1292.0).

Source: Australian Bureau of Statistics, *Counts of Australian Businesses, including Entries and Exits, various editions*, cat. no. 8165.0.

Of the 8,074 businesses with turnover registered in 2018-19 in the Capricorn Coast and Rockhampton area, 24.1% reported a turnover of between \$0 and less than \$50,000, while 34.3% had between \$50,000 and less than \$200,000. A further 35.7% reported a turnover between \$200,000 and less than \$2 million. Turnover of \$2 million or more was reported by 6.2% of businesses.

Table 18 Counts of registered businesses (a) by industry and turnover range, Capricorn Coast and Rockhampton, 2018-19

Industry	Turnover range – number of businesses						Total
	\$0 to less than \$50k	\$50k to less than \$100	\$100k to less than \$200k	\$200k to less than 500k	\$500k to less than \$2m	\$2m or more	
Agriculture, forestry and fishing	492	221	199	196	121	38	1,244
Mining	6	6	20	17	15	6	61
Manufacturing	45	38	46	50	63	26	243
Electricity, gas, water and waste services	14	12	3	6	3	0	33
Construction	217	201	344	377	246	105	1,489
Wholesale trade	35	21	22	17	30	29	149
Retail trade	55	48	48	82	94	88	439
Accommodation and food services	26	35	65	119	114	30	383
Transport, postal and warehousing	216	88	89	83	57	25	560
Information media and telecommunications	12	3	12	9	3	0	35
Financial and insurance services	223	84	95	72	39	12	526
Rental, hiring and real estate services	217	174	163	133	69	27	773
Professional, scientific and technical services	126	93	115	113	83	39	547
Administrative and Support Services	71	39	61	29	19	15	259
Public Administration and Safety	0	3	3	0	6	3	18
Education and Training	25	11	23	36	15	6	113
Health Care and Social Assistance	53	41	80	142	107	25	452
Arts and Recreation Services	30	14	13	14	12	0	107
Other Services	73	96	139	203	86	29	626
Not Classified	9	3	0	0	0	0	17
Total	1,945	1,231	1,540	1,698	1,182	503	8,074
Per cent	24.1	15.2	19.1	21.0	14.6	6.2	100.0

(a) It is not currently possible to account for those businesses which operate out of several locations, other than at their main location. This is particularly relevant for larger businesses, which commonly establish outlets in numerous states and regions across Australia. The reason for this is that data pertaining to individual business locations are not currently available from the Australian Bureau of Statistics Business Register. Users should therefore be aware of this limitation when using counts of businesses included in this table.

(b) Australian Bureau of Statistics, Australian and New Zealand Standard Industrial Classification (ANZSIC), 2006 edition (ABS cat. no. 1292.0).

Source: Australian Bureau of Statistics, *Counts of Australian Businesses, including Entries and Exits, Jun 2014 to Jun 2018*, cat. no. 8165.0.

Between the 2014-15 and 2018-19 financial years there was an increase of 1.0% in businesses with no employees and a 2.9% increase in the number of businesses with between 20 to 199 employees. Between 2014-15 and 2017-18, the number of registered businesses that recorded turnover has fluctuated. There was an 9.3% increase in the number of businesses with a turnover of greater than \$2 million during this period.

Table 19 Business counts, Capricorn Coast and Rockhampton, 2014-15 to 2018-19

Workforce size	2014-15		2015-16		2016-17		2017-18		2018-19	
	no.	%	no.	%	no.	%	no.	%	no.	%
Non employing	4,765	59.1	4,874	60.4	4,918	60.4	4,834	60.0	4,815	59.6
1-4 employees	2,141	26.6	2,133	26.5	2,092	25.7	2,147	26.7	2,119	26.2
5-19 employees	937	11.6	909	11.3	901	11.1	919	11.4	909	11.3
20-199 employees	204	2.5	209	2.6	192	2.4	197	2.4	210	2.6
200+ employees	6	0.1	3	0.0	3	0.0	9	0.1	9	0.1
Total	8,056	100.0	8,063	100.0	8,144	100.0	8,055	100.0	8,074	100.0

Turnover Range	2014-15		2015-16		2016-17		2017-18		2018-19	
	no.	%	no.	%	no.	%	no.	%	no.	%
\$0 to \$50k	2,041	25.3	1,964	24.4	2,022	24.8	1,939	24.1	1,945	24.1
\$50k < \$100k	1,160	14.4	1,265	15.7	1,265	15.5	1,195	14.8	1,231	15.2
\$100k < \$200	1,454	18.0	1,447	17.9	1,499	18.4	1,520	18.9	1,540	19.1
\$200k < \$500k	1,545	19.2	1,612	20.0	1,574	19.3	1,619	20.1	1,698	21.0
\$500k < \$2m	1,310	16.3	1,368	17.0	1,275	15.7	1,265	15.7	1,182	14.6
>\$2m	460	5.7	483	6.0	419	5.1	474	5.9	503	6.2
Total	8,056	100.0	8,063	100.0	8,144	100.0	8,055	100.0	8,074	100.0

Source: ABS, *Counts of Australian Businesses, including Entries and Exits*, various editions, cat. no. 8165.0.

HOUSING

Quick stats

- Capricorn Coast and Rockhampton Region median house price, year to March 2020 – \$312,500
- Capricorn Coast and Rockhampton Region median unit and townhouse price, year to March 2020 - \$250,000
- Capricorn Coast and Rockhampton Region median vacant urban land price, year to March 2020 - \$160,000
- Median weekly rent June quarter 2020
 - \$240, 2 bedroom flats or units
 - \$300, 3 bedroom houses
 - \$360, 4 bedroom houses
- 356 residential dwelling approvals, year ending 30 June 2020
- Residential dwelling approvals: \$153.4 million year ending 30 June 2020
- Non-residential building approvals: \$98.5 million year ending 30 June 2020
- 225 lots approved in the year ending 31 March 2020

Median house, unit/townhouse and urban vacant land prices

The median house price in the 12 months to the end of March 2020 was \$312,500 in the Capricorn Coast and Rockhampton Region. While the Rockhampton (R) median price was less than that of Mackay and Cairns Regional Councils, and Townsville and Brisbane Cities, the Livingstone (S) median price was higher than the Rockhampton (R) median.

The median unit and townhouse price in the 12 months to the end of December 2019 was \$250,000 in the Capricorn Coast and Rockhampton Region. These median prices were higher than in Gladstone, Central Highlands, Mackay, Townsville and Cairns local government areas. The median unit/townhouse price decreased 8.7% in Rockhampton (R) and 10.9% in Livingstone (S) between the 12 months to the end of March 2020 and the previous 12-month period.

The median vacant urban land price in the 12 months to the end of March 2020 was \$160,000 in Capricorn Coast and Rockhampton Region. The median price decreased by 4.7% in the region, 2.3% in Livingstone (S) and 7.2% in Rockhampton (R).

Table 20 Median house prices, Median unit/townhouse prices and Median vacant urban land prices, Rockhampton Regional Council area and other selected local government areas, 12 months to March 2020

Local government area	Median house prices		Median unit/townhouse prices		Median vacant urban land prices	
	12 months to end of Mar 2020	Change over 1 year	12 months to end of Mar 2020	Change over 1 year	12 months to end of Mar 2020	Change over 1 year
	\$	%	\$	%	\$	%
Capricorn Coast and Rockhampton Region	312,500	0.8	250,000	-10.7	160,000	-4.7
Rockhampton (R)	262,000	2.7	260,000	-8.8	153,000	-7.2
Livingstone (S)	405,000	2.5	236,000	-10.9	169,000	-2.3
Bundaberg (R)	287,500	-2.2	255,000	2.2	150,000	1.5
Gladstone (R)	300,000	3.4	165,000	-2.9	100,000	-23.1
Central Highlands (R)	260,000	18.2	147,500	-13.2	65,000	-13.3
Mackay (R)	367,500	6.1	230,000	-3.4	175,000	1.2
Townsville (C)	327,000	0.6	235,000	-6.0	161,000	0.6
Cairns (R)	422,000	1.7	226,000	-1.3	228,000	0.0
Brisbane (C)	685,000	2.2	450,000	0.0	410,000	0.7

R = Regional Council C = City S = Shire n.a. = not available

Source: Department of Natural Resources and Mines, Office of the Valuer-General, Property Sales

Median Weekly Rent

During the June quarter 2020, the Capricorn Coast and Rockhampton area recorded a median weekly rental price of \$240 for two-bedroom flats/units, \$300 for three-bedroom houses and \$360 for four-bedroom houses.

Table 21 Median weekly rent for two-bedroom flats/units, select local government areas, June quarter 2019 to June quarter 2020

Local government area	Jun qtr 2019	Sep qtr 2019	Dec qtr 2019	Mar qtr 2020	Jun qtr 2020
Capricorn Coast and Rockhampton	230	230	230	240	240
Bundaberg (R)	240	240	240	240	240
Central Highlands (R)	200	215	220	220	230
Gladstone (R)	170	175	180	180	190
Mackay (R)	250	260	260	270	280
Townsville (C)	255	265	275	275	280
Cairns (R)	310	310	310	320	320
Brisbane (C)	420	425	425	430	430

Table 22 Median weekly rent for three-bedroom houses, select local government areas, June quarter 2019 to June quarter 2020

Local government area	Jun qtr 2019	Sep qtr 2019	Dec qtr 2019	Mar qtr 2020	Jun qtr 2020
	— \$ —				
Capricorn Coast and Rockhampton	290	295	300	300	300
Bundaberg (R)	300	300	300	300	300
Central Highlands (R)	250	260	260	270	270
Gladstone (R)	220	230	230	240	250
Mackay (R)	350	350	360	360	360
Townsville (C)	305	320	320	330	330
Cairns (R)	390	390	395	400	400
Brisbane (C)	435	435	440	440	440

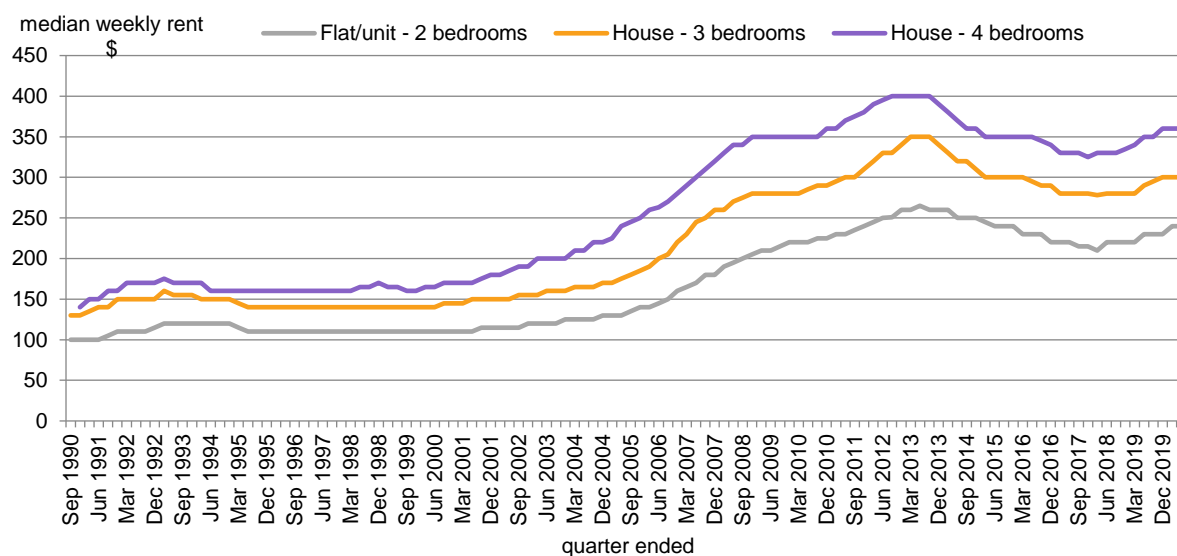
Table 23 Median weekly rent for four-bedroom houses, select local government areas, June quarter 2019 to June quarter 2020

Local government area	Jun qtr 2019	Sep qtr 2019	Dec qtr 2019	Mar qtr 2020	Jun qtr 2020
	— \$ —				
Capricorn Coast and Rockhampton	350	350	360	360	360
Bundaberg (R)	350	350	350	353	360
Central Highlands (R)	350	360	370	370	380
Gladstone (R)	275	280	290	300	300
Mackay (R)	400	400	410	420	420
Townsville (C)	370	380	390	395	390
Cairns (R)	450	455	460	460	465
Brisbane (C)	540	540	540	550	540

R = Regional Council C = City Source: Residential Tenancies Authority, 2020

Median weekly rents in June quarter 2020 in the Capricorn Coast and Rockhampton Region increased for two-bedroom flats and units, three-bedroom houses and four-bedroom houses by 4.3%, 3.4% and 2.9% respectively from the June quarter 2019.

Figure 21 Median weekly rent, four-bedroom houses, three-bedroom houses and two-bedroom flats and units, Capricorn Coast and Rockhampton, December quarter 1990 to June 2020



Source: Residential Tenancies Authority, 2020.

Building Approvals

In the 12 months ending 30 June 2020, there were 356 new residential dwelling approvals in the Capricorn Coast and Rockhampton area. Yeppoon SA2 accounted for 41.6% of all new residential dwelling units in the region, followed by Parkhurst - Kawana SA2 and Norman Gardens SA2 with 12.4% and 10.4% respectively. Total residential building value in the year ending June 2020 for the region was \$153.4 million and accounted for 1.4% of residential building value in Queensland. Total building value for the Capricorn Coast and Rockhampton area increased by 25.4% between the year ended June 2019 and the year ended June 2020.

Table 24 Building approvals by SA2, Capricorn Coast and Rockhampton, year ended 30 June 2020

Statistical area level 2 (a)(b)	New residential dwelling units	New residential building value (c)	Total residential building value (d)	Non-residential building value (d)	Total building value (d)
	number		- \$m -		
Berserker	7	1.4	4.7	5.1	9.8
Bouldercombe	4	0.7	1.3	0.0	1.3
Emu Park	24	5.8	8.1	2.8	10.9
Frenchville - Mount Archer	4	1.0	3.4	0.1	3.5
Glenlee - Rockyview	11	5.0	6.1	0.5	6.6
Gracemere	22	6.0	7.3	0.6	7.9
Lakes Creek	4	0.6	1.9	4.8	6.8
Mount Morgan	2	0.6	0.9	1.1	2.0
Norman Gardens	37	9.9	11.4	6.5	17.9
Park Avenue	3	0.6	2.1	17.7	19.8
Parkhurst - Kawana	44	14.8	16.9	6.6	23.5
Rockhampton - West	5	1.6	3.8	1.5	5.3
Rockhampton City	5	0.5	1.7	39.8	41.5
Rockhampton Region - East	12	5.0	5.9	0.1	5.9
Rockhampton Region - North	15	5.9	11.5	0.4	11.9
Rockhampton Region - West	5	1.5	1.8	0.0	1.8
Shoalwater Bay	1	0.4	0.4	0.0	0.4
The Range - Allenstown	3	1.3	8.0	6.1	14.1
Yeppoon	148	46.9	56.3	4.8	61.1
Capricorn Coast and Rockhampton	356	109.3	153.4	98.5	251.9
Queensland	29,315	9,008.7	10,845.5	8,827.9	19,673.4
Capricorn Region as % of Queensland	1.2	1.2	1.4	1.1	1.3

.. not applicable

(a) Based on Australian Bureau of Statistics, Australian Statistical Geography Standard 2011.

(b) A map detailing boundaries for statistical area level 2 localities can be found in the Introduction section of this profile.

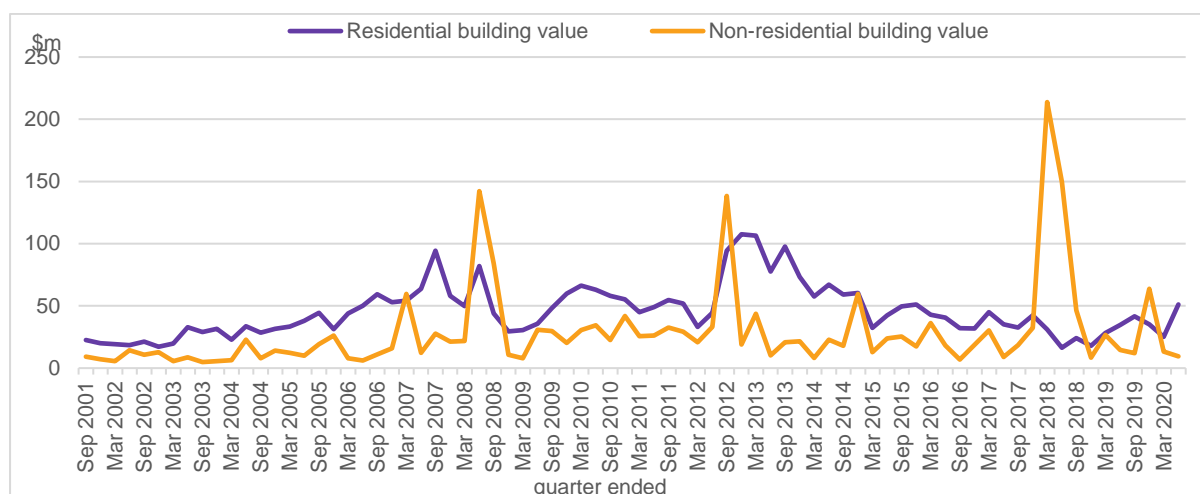
(c) Excludes alterations, additions and conversions.

(d) Includes alterations, additions and conversions.

Source: Australian Bureau of Statistics, *Building Approvals, Australia*, cat. no. 8731.0.

The value of residential building approvals in the Capricorn Coast and Rockhampton area during the quarter ended 30 June 2020 (\$51.2 million) was more than the March quarter 2020 (\$25.2 million). The value of non-residential buildings approved in the June quarter 2020 was \$9.4 million, less than the previous quarter figure of \$13.2 million.

Figure 22 Value of residential and non-residential building approvals (a) (b), Capricorn Coast and Rockhampton, September quarter 2001 to June quarter 2020



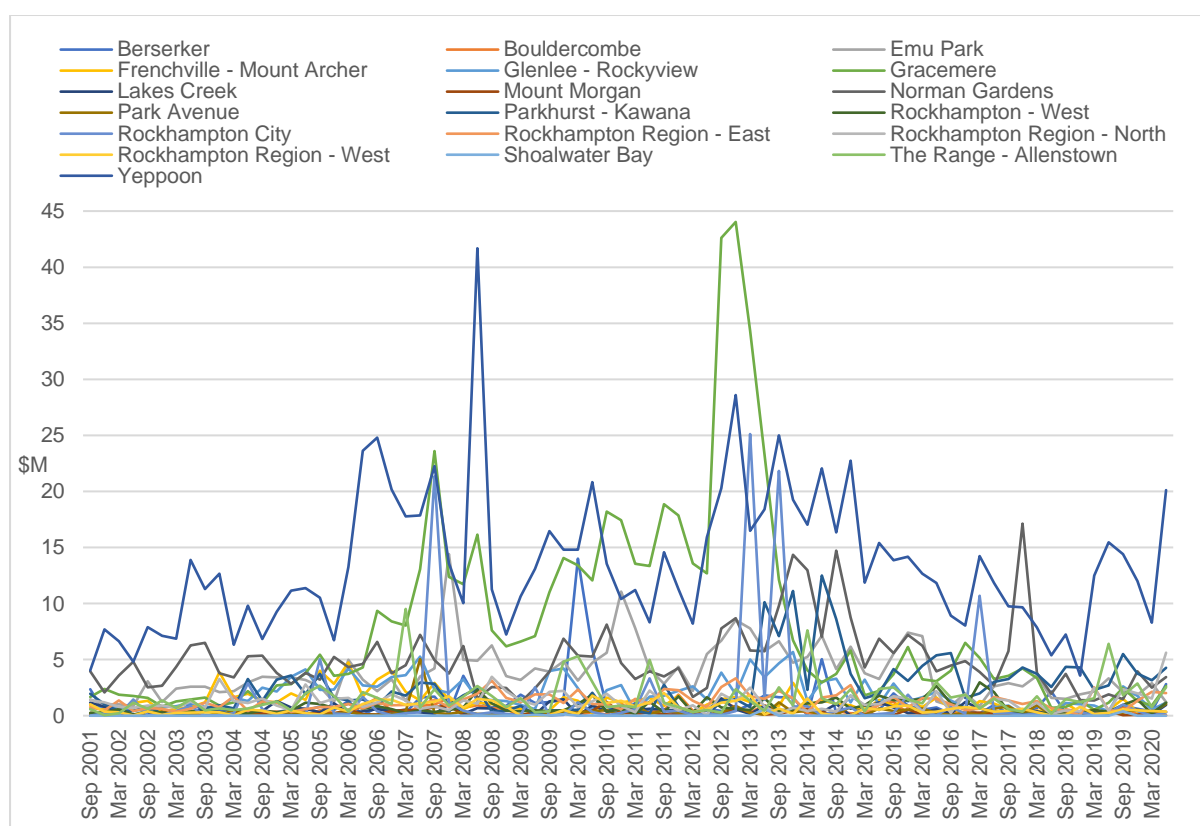
(a) Includes alterations, additions and conversions.

(b) Quarterly figures are based on December 2019 release of ABS cat. no. 8731.0. The entire time period is fully revised at each quarterly release. Therefore, figures may be different from those presented in the past.

Source: Australian Bureau of Statistics, *Building Approvals, Australia*, cat. no. 8731.0.

At the SA2 level, residential building value fluctuated from quarter to quarter. In the June quarter 2020, Yeppoon SA2 recorded a residential building value of \$20.1 million, followed by Rockhampton Region - North SA2 (\$5.6 million).

Figure 23 Value of residential building approvals (a) (b), SA2s in the Capricorn Coast and Rockhampton, September quarter 2001 to June quarter 2020



(a) Includes alterations, additions and conversions.

(b) Quarterly figures are based on December 2019 release of ABS cat. no. 8731.0. The entire time period is fully revised at each quarterly release. Therefore, figures may be different from those presented in the past.

Source: Australian Bureau of Statistics, *Building Approvals, Australia*, cat. no. 8731.0.

Land Activity

In the Capricorn Coast and Rockhampton area, 225 residential lots were approved in year ending March 2020. This was less than the number of lots than for the same period to March 2019 (449 lots).

Table 25 Land development, Capricorn Coast and Rockhampton, 2017 to 2020

Year ending Mar 31	Lot approvals (a)(b)	Lot production (a)	Lot registration (c)(d)(e)(f)	Median land sales \$	Volume of sales	Total dwelling approvals
2017	136	192	na	165,000	433	na
2018	170	175	288	166,900	411	430
2019	449	123	194	167,900	268	221
2020	225	158	195	160,000	324	348

(a) Includes urban and rural residential.

(b) Lot approvals are the number of residential allotments, in a subdivision plan, which have been approved by a local government.

(c) Lot production relates to the number of residential allotments which have been completed with regard to infrastructure requirements and have been sealed by the local government authority.

(d) Includes 60 m² to 50,000 m² lots.

(e) Lot registrations are the final stage in the development of allotments where the lots have been registered with the Department of Natural Resources and Mines.

(f) Includes 140 m² to 2,500 m² lots.

Source: Queensland Treasury and Trade, *Residential Land Development Activity Profile*, Livingstone Shire Council and Rockhampton Regional Council, *March Quarter 2020* and Department of Natural Resources and Mines, Office of the Valuer-General, Property Sales.

EDUCATION

Quick stats

- 1,444 apprentices and trainees, June quarter 2019
- 203 school-based apprentices and trainees, June quarter 2019
- 6,601 students enrolled at Rockhampton campuses CQUniversity, 2018.
- 54.1% of persons 15 years and over held a non-school educational qualification, 2016 Census
- Society and culture was the most common field of qualification
- 41 primary schools, 11 secondary schools and 5 combined schools.
- 55.5% of 21,190 school students in the region attended government schools

Apprentices and Trainees

During the June quarter 2019, a total of 1,444 apprentices and trainees were in training in the Capricorn Coast and Rockhampton area. The largest employer industry was construction (291 persons), followed by other services (225 persons) and manufacturing (174 persons). The industry with the largest increase in apprentice and trainee numbers between the June quarter 2018 and June quarter 2019 was mining (55 persons), followed by other services (26 persons). Administration and support services experienced the largest decline in apprentice and trainee numbers between the two periods (32 persons), followed by electricity, gas, water and waste services (13 persons).

In the June quarter 2019, 203 school-based apprentices and trainees were in training in the Capricorn Coast and Rockhampton area. The largest group of school-based apprentices and trainees was in accommodation (52 persons), followed by manufacturing (25 persons) and other services (26 persons).

Table 26 Apprentices and trainees in training (a) by employer industry, Capricorn Coast and Rockhampton (b), June quarter 2014 - 2019

Employer Industry	2014	2015	2016	2017	2018	2019
Agriculture, forestry and fishing	8	13	14	13	11	7
Mining	155	144	88	92	116	171
Manufacturing	337	304	222	206	165	174
Electricity, gas, water and waste services	69	61	46	61	69	56
Construction	347	386	331	305	281	291
Wholesale trade	77	38	35	28	33	34
Retail trade	89	81	85	78	66	57
Accommodation	116	104	123	121	105	112
Transport, postal and warehousing	108	88	74	49	57	49
Information media and telecommunications	7	9	5	6	8	8
Financial and insurance services	14	6	4	9	9	7
Rental, hiring and real estate services	10	11	6	4	2	1
Professional, scientific and technical services	48	33	30	20	30	34
Administrative and support services	101	94	134	150	117	85
Public administration and safety	88	58	67	48	48	50
Education and training	8	11	11	11	9	12
Health care and social assistance	90	91	48	53	54	59
Arts and recreation services	11	12	20	12	13	22
Other services	188	177	176	191	199	225
Total	1871	1721	1519	1457	1390	1444

Source: National Centre for Vocational Education Research (NCVER), VOCSTATS, 2019

Table 27 School-based apprentices and trainees in training by employer industry, Capricorn Coast and Rockhampton, June quarter 2014-2019

Employer Industry	2014	2015	2016	2017	2018	2019
Agriculture, forestry and fishing	4	3	5	5	7	4
Mining	3	2	1	2	1	1
Manufacturing	27	32	27	30	19	25
Electricity, gas, water and waste services	6	1	0	0	2	1
Construction	29	31	28	23	20	22
Wholesale trade	0	1	2	2	3	5
Retail trade	14	15	10	16	11	13
Accommodation	31	26	44	42	33	52
Transport, postal and warehousing	11	14	14	5	11	6
Information media and telecommunications	2	2	0	1	2	1
Financial and insurance services	0	0	0	0	0	0
Rental, hiring and real estate services	2	0	0	0	0	0
Professional, scientific and technical services	3	5	5	3	6	1
Administrative and support services	14	20	19	39	27	17
Public administration and safety	1	1	0	0	1	1
Education and training	2	1	1	1	0	2
Health care and social assistance	13	13	9	4	9	13
Arts and recreation services	9	4	3	1	4	14
Other services	33	31	25	21	28	26
Total	204	202	193	195	183	203

Source: National Centre for Vocational Education Research (NCVER), VOCSTATS, 2019

Vocational education and training students

In 2018, 5,753 students completed vocational education and training qualifications in the Capricorn Coast and Rockhampton Region. Society and culture had the largest number of vocational education and training students in the area (1,067 students), followed by engineering and related technologies (870 students) and management and commerce (793 students). Of the 5,753 completions, 1,252 were achieved by students attending high schools in the Capricorn Coast and Rockhampton Region.

Table 28 Qualification completed for program field of education, Capricorn Coast and Rockhampton Region, 2016-18

	2016	2017	2018p
Natural and physical sciences	19	10	2
Information technology	138	91	105
Engineering and related technologies	1,225	1,320	870
Architecture and building	225	258	188
Agriculture, environmental and related studies	96	77	119
Health	605	359	492
Education	174	246	97
Management and commerce	676	727	793
Society and culture	945	1,028	1,067
Creative arts	17	18	11
Food, hospitality and personal services	369	340	302
Mixed field programmes	245	252	300
Not known	555	1,459	1,400
Total completions	5,330	6,177	5,753

P = preliminary

Source: National Centre for Vocational Education Research (NCVER), VOCSTATS, 2019

CQUniversity

The main campus of CQUniversity is situated in the Capricorn Coast and Rockhampton area. In 2018, there were 6,601 students enrolled at Rockhampton campuses.

Table 29 CQUniversity student numbers by campus, 2014 to 2018

Campus	2014	2015	2016	2017	2018
Australian campuses	No. of students				
Brisbane	3,279	3,333	3,362	3,483	3,731
Bundaberg	1,575	1,712	1,870	1,883	1,981
Cairns	543	642	900	1,106	1,423
Emerald	721	930	822	787	660
Gladstone	1,950	2,215	2,308	2,339	2,224
Mackay	4,470	4,952	5,036	4,692	4,645
Melbourne	1,908	2,180	2,336	3,156	4,051
Noosa	1,105	969	926	869	978
Rockhampton	6,333	7,780	7,909	6,693	6,601
Sydney	2,583	2,790	3,001	3,407	3,586
Townsville	528	624	811	986	1,315
Distance education	2,160	2,224	2,293	2,291	2,343
Total (a)	27,118	30,033	31,195	31,427	33,238

(a) Total includes students on other campuses

Source: CQUniversity Annual Report

The equivalent full-time student load (EFTSL) determines the total study load of equivalent full-time students, recognising that many students do not study full time. The EFTSL at the Rockhampton Campuses of CQUniversity was 3,087.3 in 2018.

Table 30 Student load (EFTSL) by education sector and year, Rockhampton Campuses

	2014	2015	2016	2017	2018
Higher education	2,148.1	2,140.5	2,170.4	2,075.1	2,050.0
VET	949.3	1,475.9	1,334.5	1,125.7	1,037.3
Total	3,097.4	3,616.4	3,504.9	3,200.8	3,087.3

Source: CQUniversity Annual Report

Educational Qualifications

Of persons aged 15 years and over in the Capricorn Coast and Rockhampton area at the time of the 2016 Census, 54.1% (50,102 persons) held a non-school educational qualification, compared with 59.1% (2,241,124 persons) in Queensland. In the region, the proportion of persons with a non-school qualification was less than that of Queensland for Bachelor degree or higher and advanced diploma and diploma. The proportion of Capricorn Coast and Rockhampton area residents with a certificate was higher than in Queensland.

Table 31 Non-school educational qualifications (a), Capricorn Coast and Rockhampton area and Queensland, 2016

Educational qualification	Capricorn Coast and Rockhampton	Queensland	Region as a % of Queensland
	— persons —		%
Bachelor degree or higher	11,094	693,410	1.6
Advanced diploma and diploma	5,821	330,619	1.8
Certificate	21,580	807,105	2.7
Total (b)	50,102	2,241,124	2.2
Persons 15 years and over	92,567	3,790,497	2.4
Proportion with qualifications	54.1	59.1	..

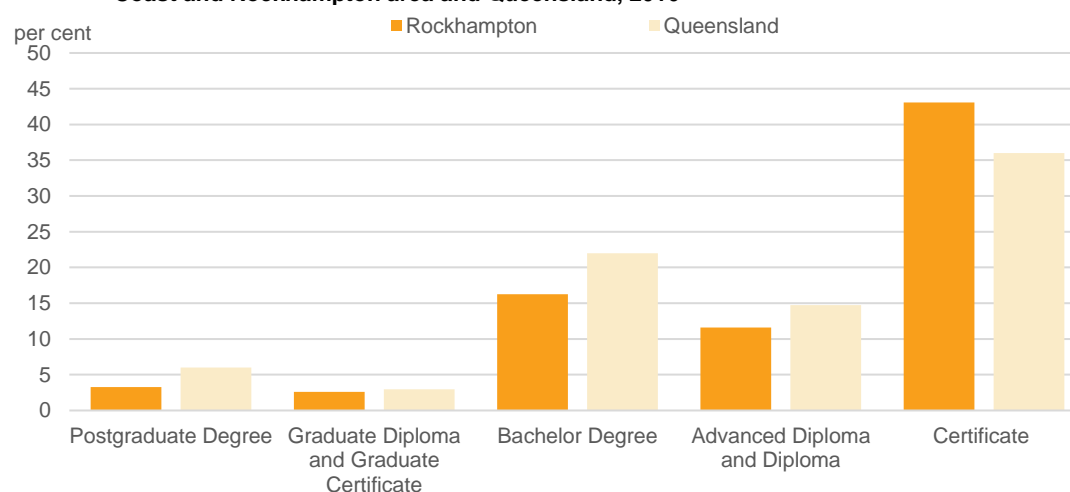
.. = not applicable

(a) Persons aged 15 years and over and based on place of usual residence.

(b) Includes inadequately described and not stated responses.

Source: Australian Bureau of Statistics, Census of Population and Housing, 2016, *General Community Profile – G46 and G04*.

Figure 24 Proportion of persons aged 15 years and over with a non-school qualification by type, Capricorn Coast and Rockhampton area and Queensland, 2016



Source: Australian Bureau of Statistics, Census of Population and Housing, 2016, *General Community Profile – G46*.

In the Capricorn Coast and Rockhampton area at the time of the 2016 Census, the most common field of qualification was in engineering and related technologies (19.5%). This was the second most popular field of study for Queensland (15.7%). Management and commerce was the second most popular field of study for the Capricorn Coast and Rockhampton area (13.2%), followed by health (9.8%).

Table 32 Field of educational qualification (a), Capricorn Coast and Rockhampton area and Queensland, 2016

Field of qualification	Capricorn Coast and Rockhampton			Queensland		
	number	%	rank	number	%	rank
Engineering and related technologies	9,763	19.5	1	352,200	15.7	2
Management and commerce	6,593	13.2	2	392,830	17.5	1
Health	4,901	9.8	3	220,075	9.8	4
Education	4,499	9.0	4	240,326	10.7	3
Society and culture	4,048	8.1	5	168,108	7.5	5
Architecture and building	3,051	6.1	6	139,929	6.2	6
Food, hospitality and personal services	2,765	5.5	7	123,168	5.5	7
Agriculture, environmental and related studies	1,084	2.2	8	43,207	1.9	11
Natural and physical sciences	756	1.5	9	51,948	2.3	6
Creative arts	714	1.4	10	67,061	3.0	8
Information technology	661	1.3	11	49,383	2.2	10
Mixed field programs	148	0.3	12	6,284	0.3	12
Field of study not stated or inadequately described	11,125	22.2	..	386,603	17.3	..
Total (b)	50,102	100.0	..	2,241,124	100.0	..

.. = not applicable

(a) Persons aged 15 years and over and based on place of usual residence.

(b) Includes inadequately described and not stated responses. Variations may occur in totals due to rounding.

Source: Australian Bureau of Statistics, Census of Population and Housing, 2016, *General Community Profile – G47*.

Primary and Secondary Schools

There is a variety of primary and secondary school options in the Capricorn Coast and Rockhampton area. In 2019, the region's schools comprised 41 primary schools, 11 secondary schools and 5 schools that combine both primary and secondary schooling.

Table 33 Primary and secondary schools by type, Capricorn Coast and Rockhampton, 2019

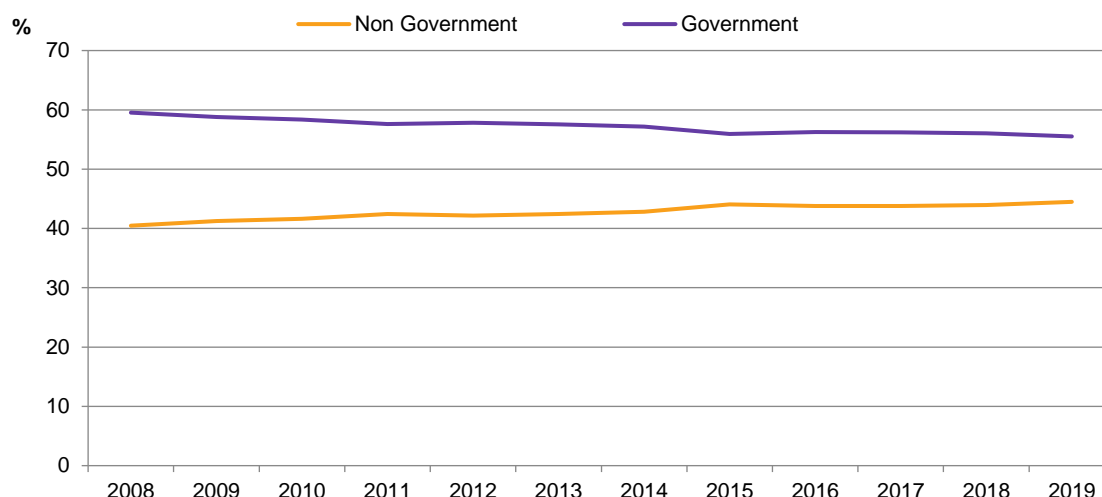
Type of school	Number
Primary state schools	33
Primary non-state schools	8
Secondary state schools	5
Secondary non-state schools	6
Combined primary and secondary non-state schools	5
Special schools	2
Total	59

Source: Department of Education and Training, Education Directory.

Of the 21,190 students enrolled at schools in the Capricorn Coast and Rockhampton area in 2019, 55.5% (11,764 students) were in government schools and 44.5% (9,426 students) were in non-government schools.

Between 2008 and 2019, the proportion of students attending government schools in the Capricorn Coast and Rockhampton area have generally declined, from 59.5% of total students to 55.5%. Conversely, students attending non-government schools have generally increased from 40.5% of total students to 44.5% by 2019, with periods of variability.

Figure 25 Percentage of students attending government and non-government schools, Capricorn Coast and Rockhampton, 2008 to 2019



Source: Australian Curriculum, Assessment and Reporting Authority 2020

TRANSPORT

Quick stats

- Highest average daily traffic movements 11,558 vehicles - Yeppoon Rd, 2018.
- Highest average daily number of heavy vehicles 1,671 vehicles – Bruce Highway north of Scrubby Creek, 2018
- Highest number of light vehicles, 10,314 vehicles and highest percentage of light vehicle traffic, 90.7% - Yeppoon Road at Iron Pot Creek
- Average monthly unleaded petrol prices were lower than Brisbane
- During 2019-20, a total of 434,109 passengers passed through Rockhampton Airport

Roads

Five major roads provide access to and from Rockhampton. In 2018, the Yeppoon Road at Iron Pot Creek had the highest average daily traffic movements (11,558 vehicles), while the Emu Park Road had the lowest average daily traffic movements (4,739 vehicles).

Table 34 Average annual daily traffic count (a), Bruce Highway, Capricorn Highway, Yeppoon Road and Emu Park Road, 2012-18

Location	Average annual daily traffic (no. of vehicles)						
	2012	2013	2014	2015	2016	2017	2018
Bruce Highway (b)	8,844	9,034	10,063	8,606	9,723	10,113	9,210
Bruce Highway (c)	8,236	7,861	7,342	7,495	7,426	7,426	7,426
Capricorn Highway (d)	5,428	4,940	5,039	5,321	4,868	4,938	4,938
Emu Park Road (e)	5,361	5,567	5,242	5,468	4,774	4,739	4,739
Yeppoon Road (f)	10,953	11,005	10,913	11,077	11,249	11,373	11,558

(a) All directions.

(b) Bruce Highway, south of Rockhampton, 1 km north of Scrubby Creek (road section 10E).

(c) Bruce Highway, north of Rockhampton, 150 m north of Terra Nova Drive (road section 10F).

(d) Capricorn Highway, 3 km west of Gracemere (road section 16A).

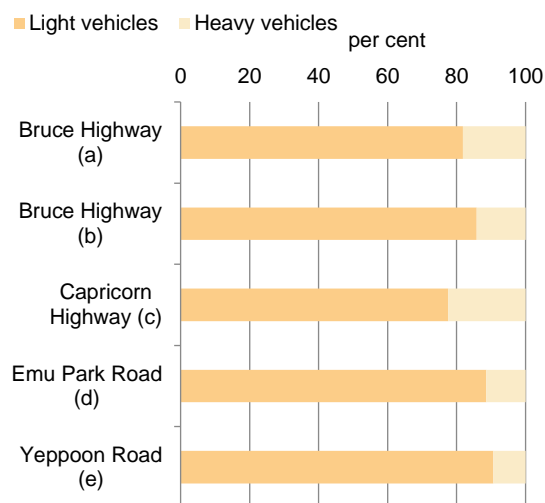
(e) Emu Park Road, Hartington St, Nerimbera (road section 194).

(f) Yeppoon Road, Iron Pot Creek (road section 196).

Source: Queensland Department of Transport and Main Roads, 2019 traffic census data.

Of the five locations selected, the Bruce Highway north of Scrubby Creek had the highest number of heavy vehicles (1,671). The Yeppoon Road at Iron Pot Creek had the highest number of light vehicles (10,314) and the highest percentage of light vehicle traffic (90.7%).

Figure 26 Average annual daily traffic count, all directions, light and heavy vehicles, Bruce Highway, Capricorn Highway, Yeppoon Road and Emu Park Road, 2018



Note: heavy vehicles comprise trucks and buses, articulated vehicles and road trains.

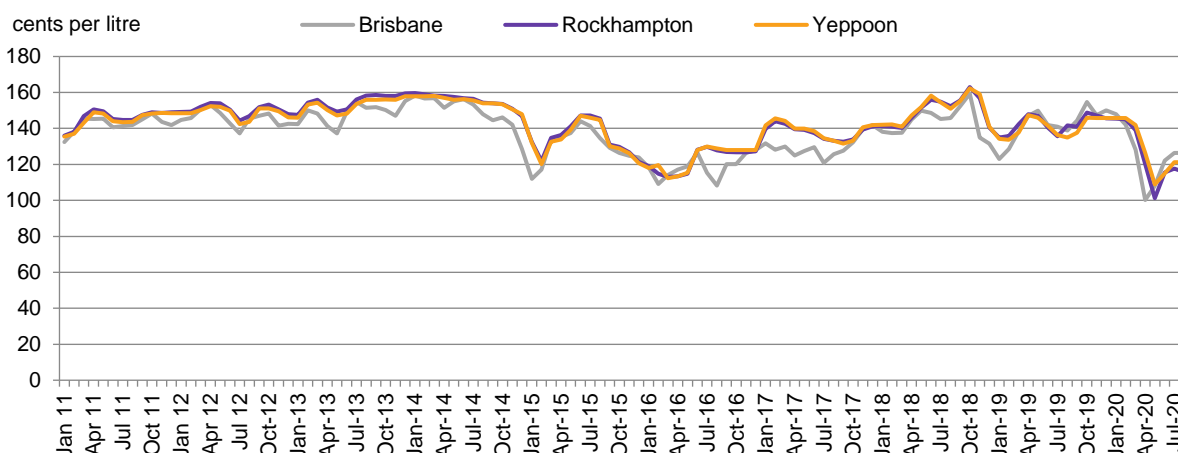
- (a) Bruce Highway, 1 km north of Scrubby Creek (road section 10E).
- (b) Bruce Highway, 150 m north of Terra Nova Drive (road section 10F).
- (c) Capricorn Highway, 3 km west of Gracemere (road section 16A).
- (d) Emu Park Road, Hartington St, Nerimbera (road section 194).
- (e) Yeppoon Road, Iron Pot Creek (road section 196).

Source: Queensland Department of Transport and Main Roads, 2019

Fuel Prices

In the Capricorn Coast and Rockhampton Region, between January 2011 and August 2020, most average monthly unleaded petrol prices were higher than Brisbane Metro; however, averages since 2020 have frequently been lower in Rockhampton and Yeppoon. Rockhampton and Yeppoon average monthly unleaded petrol prices have decreased from a high of 163.0 and 162.3 cents per litre respectively in October 2018 to a decade low of 101.2 and 108.9 cents per litre respectively in August 2020.

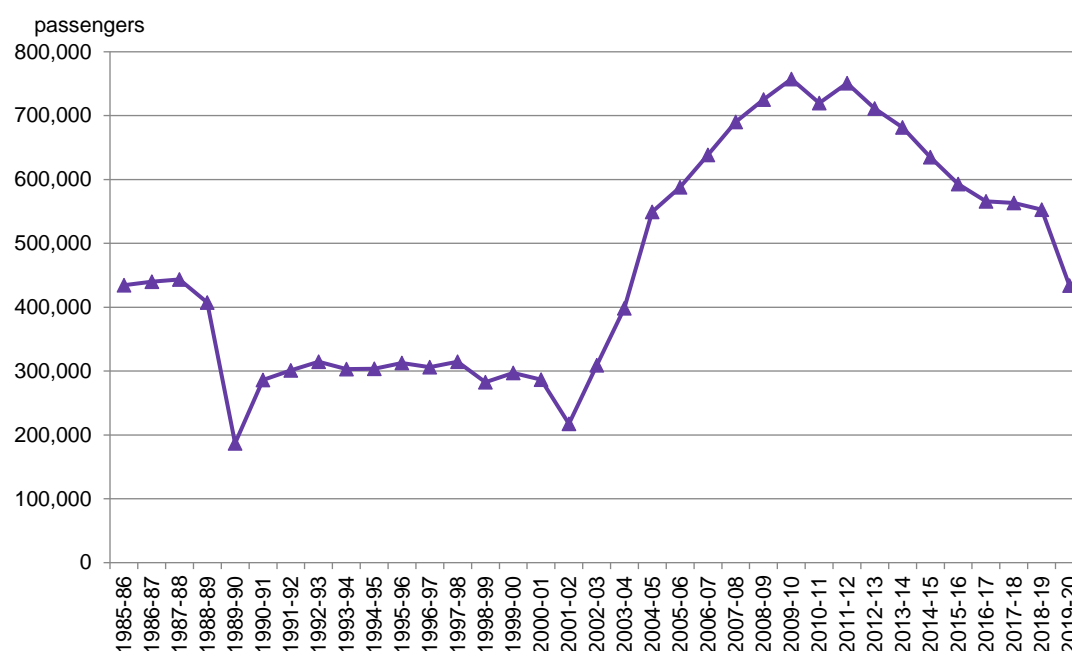
Figure 27 Average monthly fuel prices, unleaded petrol, Rockhampton, Yeppoon and Brisbane Metro, January 2011 to August 2020



Source: FuelTrac Pty Ltd, Australian Automobile Association and Royal Automobile Club of Queensland (Australia).

Air Travel

Rockhampton Airport is the major air transport facility servicing the region. Expanded facilities at the airport cater for both domestic and international airlines. During the 2019-20 financial year, a total of 434,109 passengers passed through Rockhampton Airport. This was a decrease of 21.4% from the 552,623 passengers in 2018-19 and reflects the impacts of border closures resulting from COVID-19. The average annual rate of change in passenger movements between 2010-11 and 2019-20 was a decrease of 4.0%, or an average of 28,570 passengers per year.



Note: Regional airlines data cannot be separately identified from 2013 and onwards.

Source: Bureau of Infrastructure, Regional Development and Communications, Airport Traffic Data 1985-86 to 2019-20

LIVEABILITY

Quick stats

- Prices in Fitzroy region for different household goods and services were both higher and lower than Brisbane

Retail Prices

A survey of retail prices in Queensland in 2015 compared the prices of a range of household goods and services between Brisbane and 27 regional centres. Priced items were grouped into ten categories representing different household expenses. Together these constitute the all groups index. Regional centres have an index relative to Brisbane, which was given an index of 100. Rockhampton had an All Items index of 96.6, or 3.4% less expensive than Brisbane over all items.

The housing index included median weekly rents for dwellings, electricity and other household fuels. Housing accounts for 22.2% of the average Queensland household expenditure. Housing was 21.3% less expensive in Rockhampton and 21.4% and 34.5% less expensive in Emerald and Gladstone respectively than Brisbane.

The food and non-alcoholic beverages index included bread and cereal products, dairy and related products, fruit and vegetables, dining-out meals and takeaway, meat and seafood and non-alcoholic beverages. This category accounts for 16.3% of the average Queensland household expenditure. For food and non-alcoholic beverages, only Rockhampton in the Fitzroy SA4 recorded lower prices than Brisbane (18.1%). Gladstone was the dearest centre surveyed in the region, with prices for these goods 12.7% higher than Brisbane.

The transportation index included unleaded and diesel fuel, mechanic charges, taxi fares, vehicle registration, roadside assistance membership, CTP insurance and driver licences and sundries such as car batteries, motor oil, tyres and spark plugs. In the average Queensland household, transportation accounts for more than one tenth (11.4%) of expenditure. In Rockhampton, the transportation index was 2.4% higher than Brisbane while it was 0.6% and 1.2% lower in Gladstone and Emerald respectively.

The insurance and financial services index included household contents insurance, comprehensive motor vehicle insurance, financial services and deposit and loan facilities. Rockhampton was significantly higher than Brisbane and all other centres with an index of 138.0 or 38.0% above the Brisbane region.

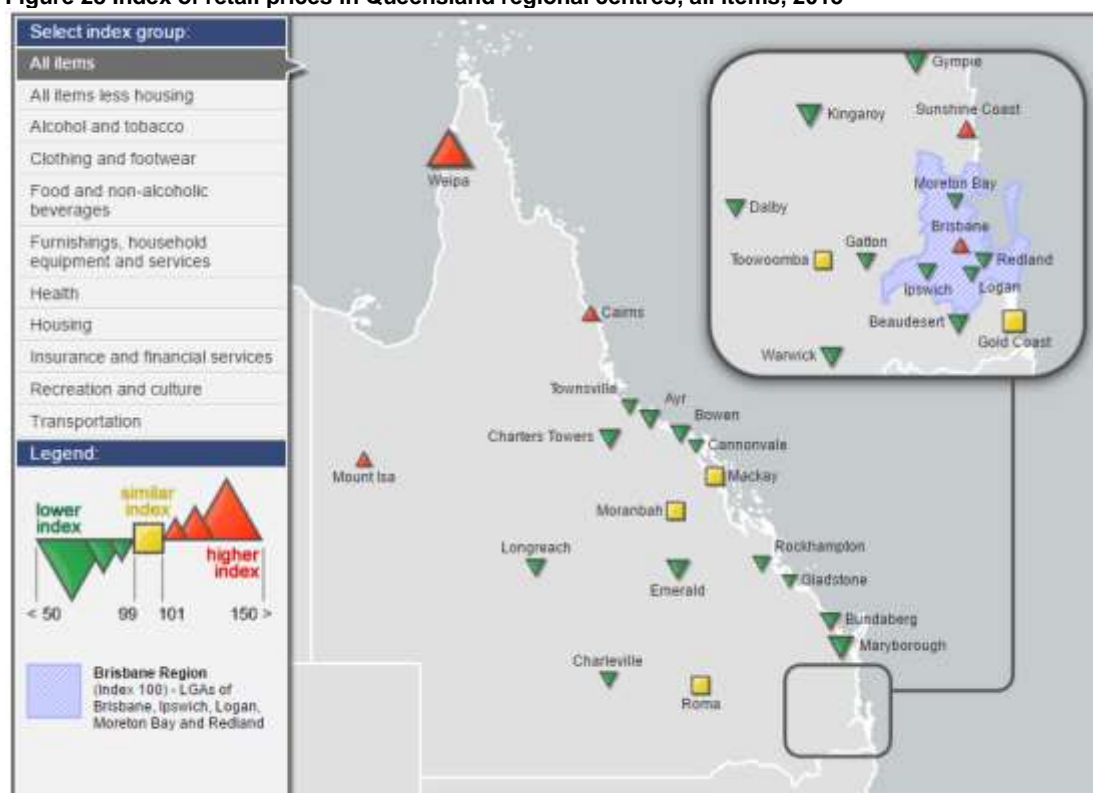
Table 35 Index of regional prices (a), Brisbane and select centres, 2015

Centre	Item groups					
	All items	Food and non-alcoholic beverages	Housing	Insurance and financial services	Health	Transportation
Bundaberg	94.3	102.4	73.9	87.6	99.8	99.8
Emerald	91.3	103.0	65.5	108.6	100.1	98.8
Gladstone	98.9	112.7	78.6	90.1	100.1	99.4
Mackay	99.4	107.9	77.1	95.2	100.0	105.7
Rockhampton	96.6	81.9	78.7	138.0	100.0	102.4
Brisbane	100.0	100.0	100.0	100.0	100.0	100.0

(a) Base: Brisbane = 100.0.

Source: Queensland Treasury and Trade, *Prices across Queensland: how they compare*, 2016.

Figure 28 Index of retail prices in Queensland regional centres, all items, 2015



Source: The State of Queensland (Queensland Treasury and Trade) 2014, *Index of retail prices in Queensland regional centres, 2015*, interactive map, URL: <http://www.qgso.qld.gov.au/products/reports/index-retail-prices-qld-reg-centres/index-retail-prices-qld-reg-centres-2015-map.php> accessed 20 February 2017.

SOCIAL AMENITIES

Boat Registrations

In June 2019, there were 10,206 recreational boats registered in the Capricorn Coast and Rockhampton postcode areas, an increase of 1.8% from 2018. The majority of boats registered had a length between three and four metres (29.7%) while the largest percentage growth was in boats between 8 and 8.9 metres. Overall, there were decreases in numbers of the largest boats registered while overall numbers of registered boats less than 10 metres increased.

Table 36 Boat registrations, Capricorn Coast and Rockhampton, 2013, 2017, 2018 and 2019

Boat length	2013	2017	2018	2019
<3m	237	93	90	90
3-3.9m	3,256	2,965	2,988	3,029
4-4.4m	2,249	2,489	2,513	2,548
4.5-4.9m	1,060	1,504	1,555	1,584
5-5.9m	1,236	1,397	1,429	1,485
6-7.9m	733	968	983	1,009
8-9.9m	197	206	203	211
10-11.9m	144	139	133	126
>12m	114	129	125	124
Total	9,226	9,882	10,018	10,206

Source: Department of Transport and Main Roads, 2020

Sporting Clubs

A number of sporting and leisure clubs and associations operate within the Capricorn Coast and Rockhampton area.

Table 37 Sporting clubs (a), Capricorn Coast and Rockhampton, February 2017

Sport	Clubs
Horse sports (b)	16
Martial arts	16
Bowling (c)	12
Rugby league	13
Football (Soccer)	11
Motor sports (d)	11
Swimming	8
Rugby union	9
Water sports (e)	8
Shooting (f)	7
Tennis	7
Hockey (g)	6
AFL	6
Cricket	6
Dancing - various	6
Netball and basketball	6
Cycling (h)	5
Golf	5
Gymnastics	4
Athletics and running	5
Squash	3
Other	43
Total	212

(a) Type and number of sporting clubs is likely to be incomplete.

(b) Includes horse racing clubs.

(c) Includes indoor bowls clubs.

(d) Includes aero, car, motocross, four wheel drive, go karts, motorboat, and rally clubs.

(e) Includes sailing, canoe/outrigger, rowing and water skiing.

(f) Includes archery and sports shooting.

(g) Includes indoor, outdoor and inline hockey clubs.

(h) Includes cycling, mountain bikes, trials and BMX clubs.

Source: Rockhampton Regional Council



PO Box 1313
Rockhampton Q 4700
P: 07 4927 2055 F: 07 4922 2605
www.capricornenterprise.com.au

