

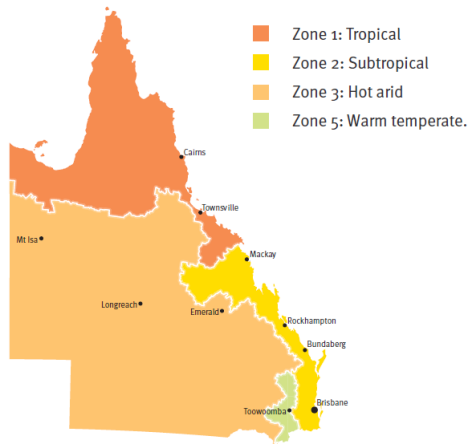
Climate



LIVE-PLAY-WORK-INVEST

Climate

There are four different climate zones in Queensland, namely:



Note: There are in total eight climate zones in Australia; four of which are present in Queensland.

Source: Queensland Government Department of Public Works, *Smart and sustainable homes – Designing for Queensland’s climate*.

Rockhampton

Rockhampton is located on the Tropic of Capricorn and is classified as having a subtropical climate.

Typical daytime temperature ranges are between 22 and 32 degrees Celsius in the summer, and 9 to 23 degrees Celsius in the winter. See [*Smart and sustainable homes – Designing for Queensland’s climate*](#) for design strategies that have been developed to help cool the home in summer and heat it in winter.

The average annual rainfall is about 805mm, with the ‘wet season’ generally being December to March and the ‘dry season’ June to September.

The Fitzroy River flows through the city centre and has a documented history of flooding. [Flood maps](#) can be viewed on Rockhampton Regional Council’s Floodplain Management website.

Yeppoon and the Capricorn Coast

Situated just north of the Tropic of Capricorn, Yeppoon also has a subtropical climate.

Typical daytime temperature ranges are between 22 and 30 degrees Celsius in the summer and 12 to 21 degrees Celsius in the winter.

The average annual rainfall is about 956.8mm, with a wet summer and drier winter.

Water drains from the sand dunes of Shoalwater Bay area to Waterpark Creek on the Capricorn Coast. The [Storm tide report](#) can be viewed on [Livingstone Shire Council](#)’s website.

Emerald and the Sapphire Gemfields

Emerald is also located on the Tropic of Capricorn and is classified as having a hot arid climate.

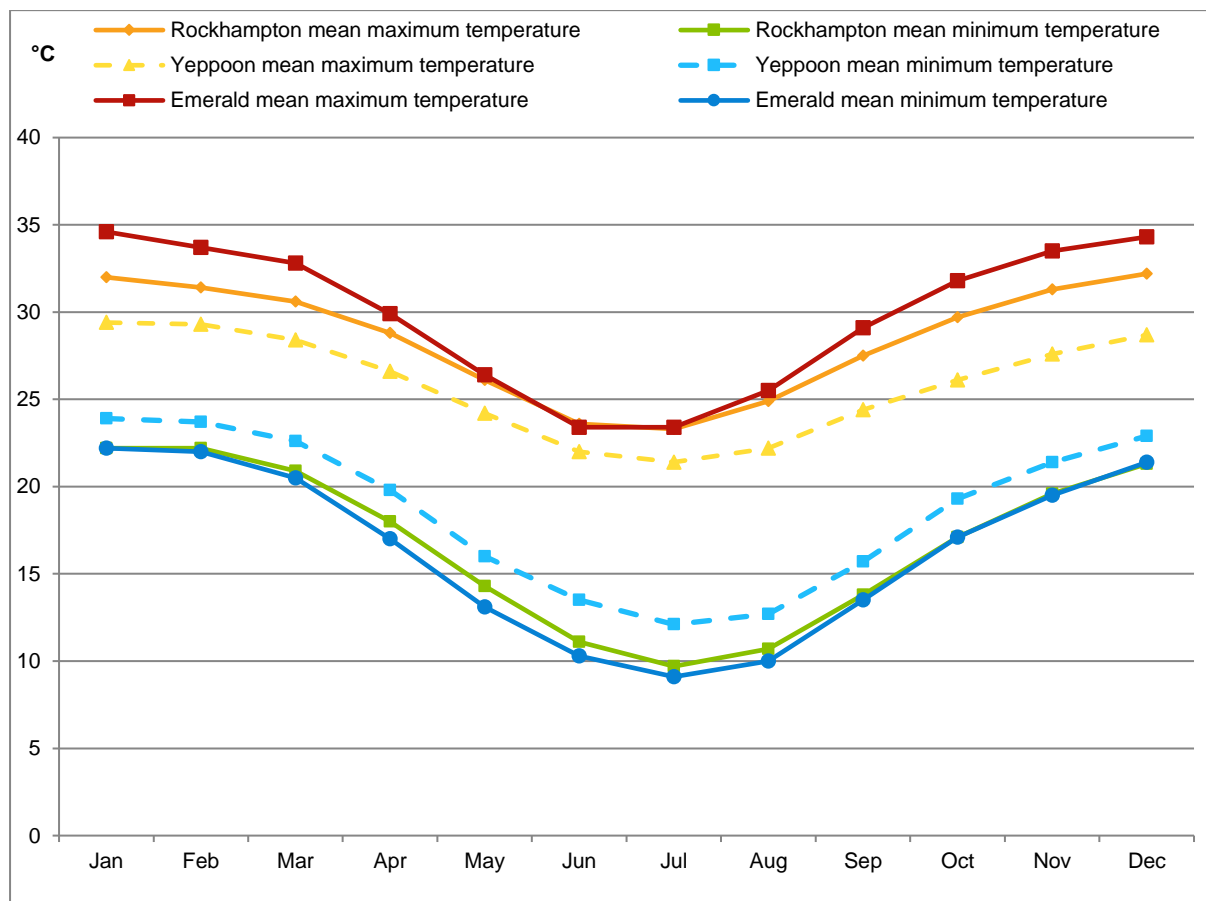
Typical daytime temperature ranges are between 21 and 35 degrees Celsius in the summer, and 9 to 23 degrees Celsius in the winter. See *Smart and sustainable homes – Designing for Queensland's climate* for design strategies that have been developed to keep the home cool in summer and retain heat in winter.

The average annual rainfall is about 547.2mm, with the 'wet season' generally being December to February when close to half of the average annual rain falls. The 'dry season' is generally in the autumn and winter.

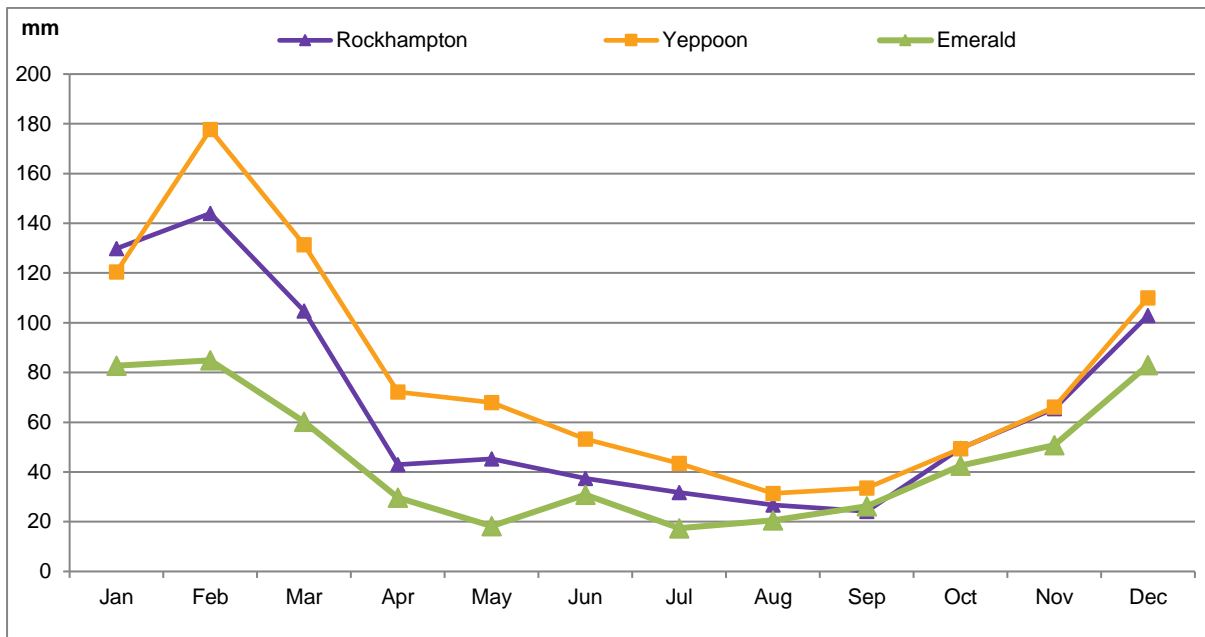
The Nogoia River, a tributary of the Fitzroy River, flows through Emerald and also has a documented history of flooding.

Source: Bureau of Meteorology, 2020

Mean monthly maximum and minimum temperatures, Rockhampton (a), Yeppoon (b) and Emerald (c), 2019



Mean monthly rainfall, Rockhampton (a), Yeppoon (b) and Emerald (c), 2019



(a) Based on observations recorded at Rockhampton Airport from 1939 to 2020.

(b) Based on observations recorded at Yeppoon Esplanade from 1993 to 2019 (temperature) and 1994 to 2020 (rainfall).

(c) Based on observations recorded at Emerald Airport from 1992 to 2020.

Source: Bureau of Meteorology, January 2020