

## ASMTI PROJECT INFORMATION

### Project Overview

Shoalwater Bay Training Area (SWBTA) is one of Australia's key training areas for the conduct of domestic and international Defence training. SWBTA is located within a World Heritage Area approximately 80km north of Rockhampton, Queensland, and covers more than 264,000ha of land and 180,000ha of sea. The project has three primary development areas centred on the existing Range at Shoalwater Bay and two precincts located in newly acquired land both north and south of the township of Marlborough.

The project involves constructing new and upgrading existing facilities and infrastructure at SWBTA to support training activities of the Australian Defence Force (ADF) and SAF.

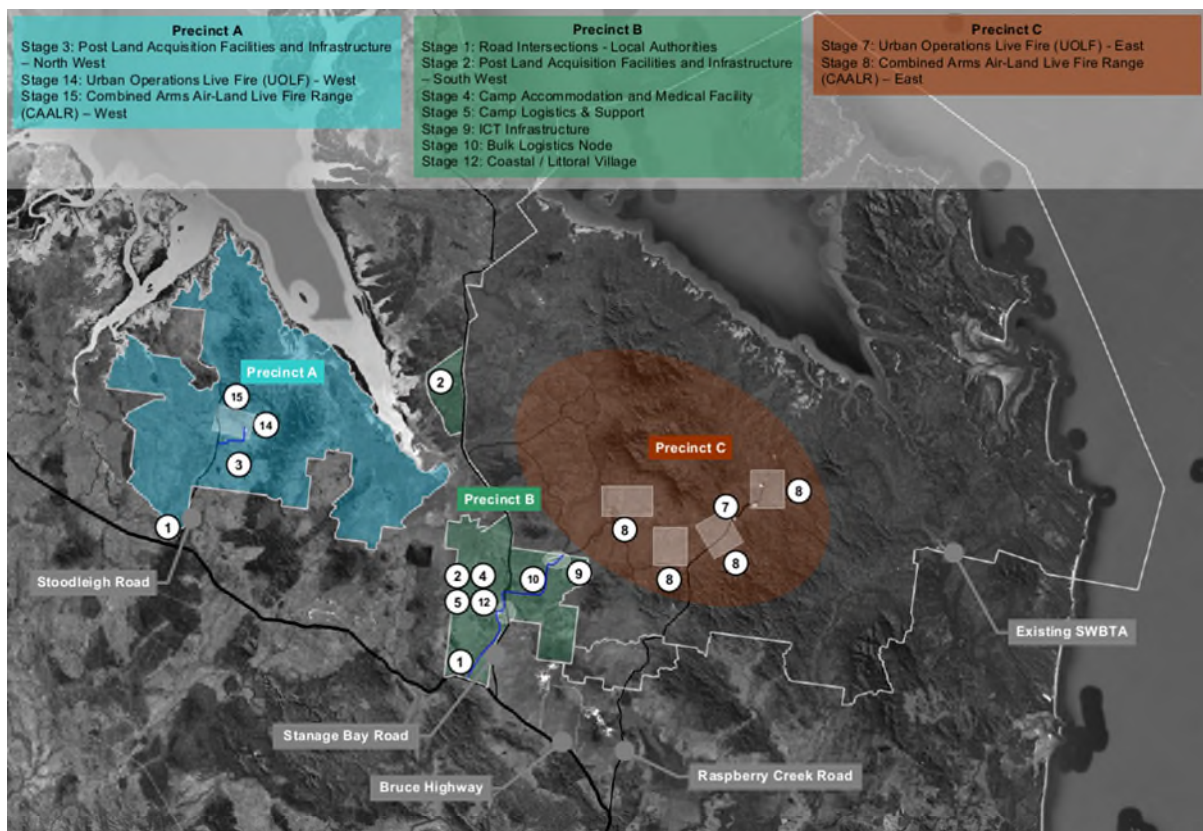


Figure 1: ASMTI Site Plan

The ASMTI scope of works includes but is not limited to:

- ° Development of newly acquired land – perimeter fire breaks, fencing and access roads
- ° Urban Operation Live Fire (UOLF) facilities
- ° Combined Arms Air Land Range (CAALR) consisting of targets, civil tracks and creek crossings
- ° Camp accommodation, administration and medical facilities buildings
- ° Camp and exercise supporting logistics
- ° New access roads and intersections



## Project Master Time Line

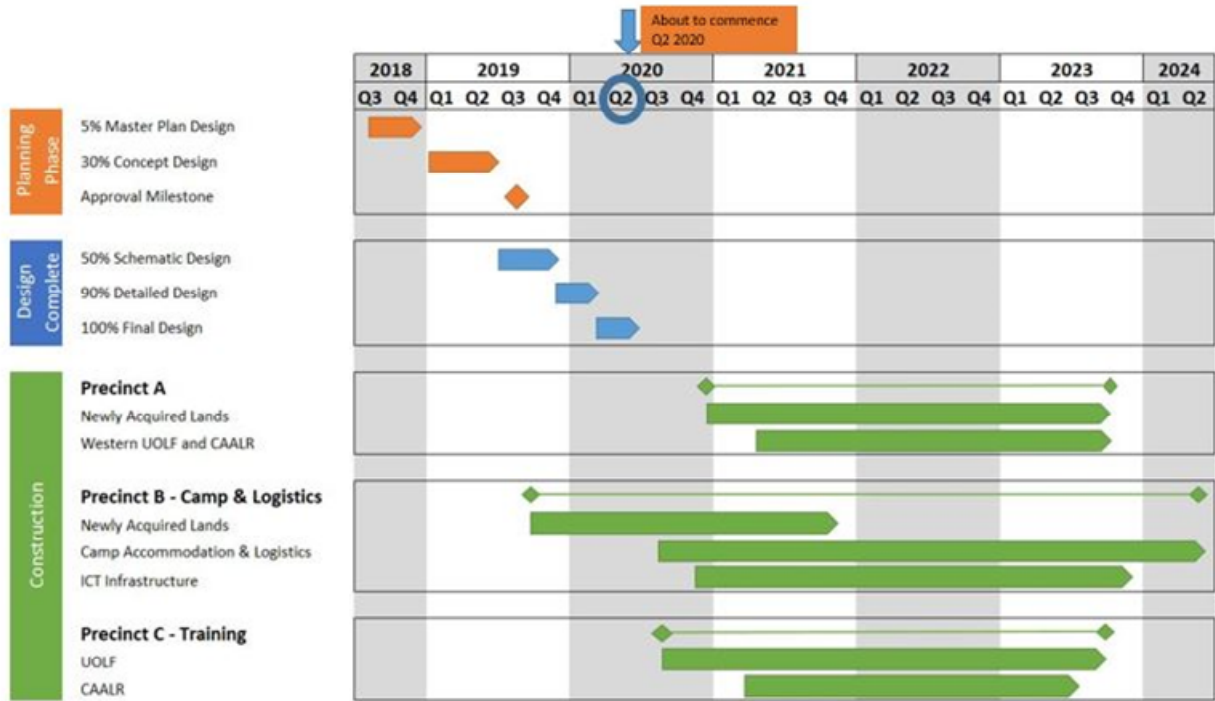


Figure 2: ASMTI Project Timeline

Currently the project is about to round out the 90% Detailed Design and commence works in precincts B and C with infrastructure works

## Procurement Principals

### High Level Process Overview



As we progress into the next round of package releases Laing O'Rourke will follow this procurement process. Currently we are in the first stage of gathering EOIs on the upcoming packages

Figure 3: Procurement Process Overview



## Core Principles

Laing O'Rourke operates under the Commonwealth Procurement Core Principles. These are:

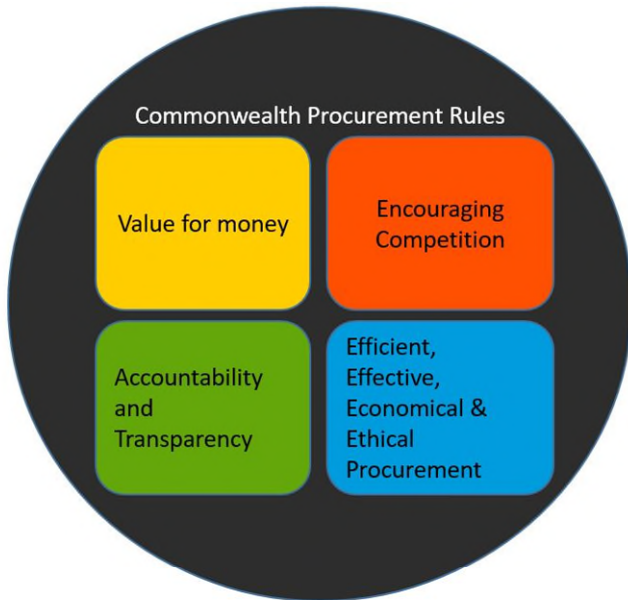


Figure 4: Commonwealth Procurement Core Principles

° Value for money – Price is not the sole factor when assess value for money. Quality of goods, fitness for purpose and relevant experience and performance history are all a part of Value for Money

° Competition is a key element. Effective competition requires non-discrimination and use of competitive procurement process

° Accountability means that Laing O'Rourke are responsible for the actions we take in relation to procurement and for the resulting outcomes. Transparency involves relevant entities taking steps to appropriate scrutiny of their procurement activity

° Efficient relates to the achievement of maximum value for the resources used. Effective relates to the extent to which intended outcomes or results are achieved. Economical relates to minimising cost. Ethical relates to honesty, integrity, probity, diligence, fairness and consistency.

## Local Industry Participation

Our goal is 80% local industry participation.

At the end of January this year, Laing O'Rourke has achieved 71% local industry engagement since commencing the delivery phase. A trend which will only move upwards as we award more sub-contracts and activity on site increases.

### Contracts awarded

Since we began the delivery phase, we are pleased to have awarded sub-contracts to the following companies:





These companies' each employ and spend locally with offices in the priority areas. We have awarded 15 packages to date, with 13 of these located in the Shoalwater region contributing to the local economy.

Laing O'Rourke also works with local economic development groups in the region to ensure that we engage as many local businesses as possible.

### **Register your interest**

If you have yet to register your interest in this project, please email [ASMTI@laingorourke.com.au](mailto:ASMTI@laingorourke.com.au) or contact Dominique McGregor on 07 4923 8444.

### **Aboriginal Engagement**

An Indigenous Land Use Agreement (ILUA) in place with Darumbal People and Defence on the land on which we operate. As a key stakeholder at Shoalwater Bay Laing O'Rourke must operate in accordance with the ILUA. To assist with this, Aboriginal Participation Manager, Gloria Malone has joined the ASMTI team. Gloria is a Darumbal person and is a great asset in working with the Traditional Owners.

Any queries regarding the Indigenous participation requirements or to gain a better understanding of working within an ILUA contact Gloria – [gmalone@laingorourke.com.au](mailto:gmalone@laingorourke.com.au) or 07 4923 8444.

### **Important Contacts and Links:**

- LAING O'ROURKE
  - Office  
07 4923 8444  
238 Quay St, Rockhampton
  - Dominique McGregor – Community Liaison  
[dmcgregor@laingorourke.com.au](mailto:dmcgregor@laingorourke.com.au)
  - EOI submissions or project enquiries  
[ASMTI@laingorourke.com.au](mailto:ASMTI@laingorourke.com.au)
  - Next Gear  
<http://www.laingorourke.com/responsibility/health-and-safety.aspx>
  
- DEFENCE
  - ASMTI  
<https://www.defence.gov.au/initiatives/asmti/>
  
- CODE COMPLIANCE
  - ABCC – Australian Building and Construction Commission  
[www.abcc.gov.au](http://www.abcc.gov.au)
  - QBCC – Queensland Building and Construction Commission  
[www.qbcc.qld.gov.au](http://www.qbcc.qld.gov.au)
  
- TENDER DOCUMENTS
  - DEQMS – Major Works Subcontract (MASC for MCC)  
<https://www.defence.gov.au/estatemangement/Support/SuiteContracts/mcontract.asp>