



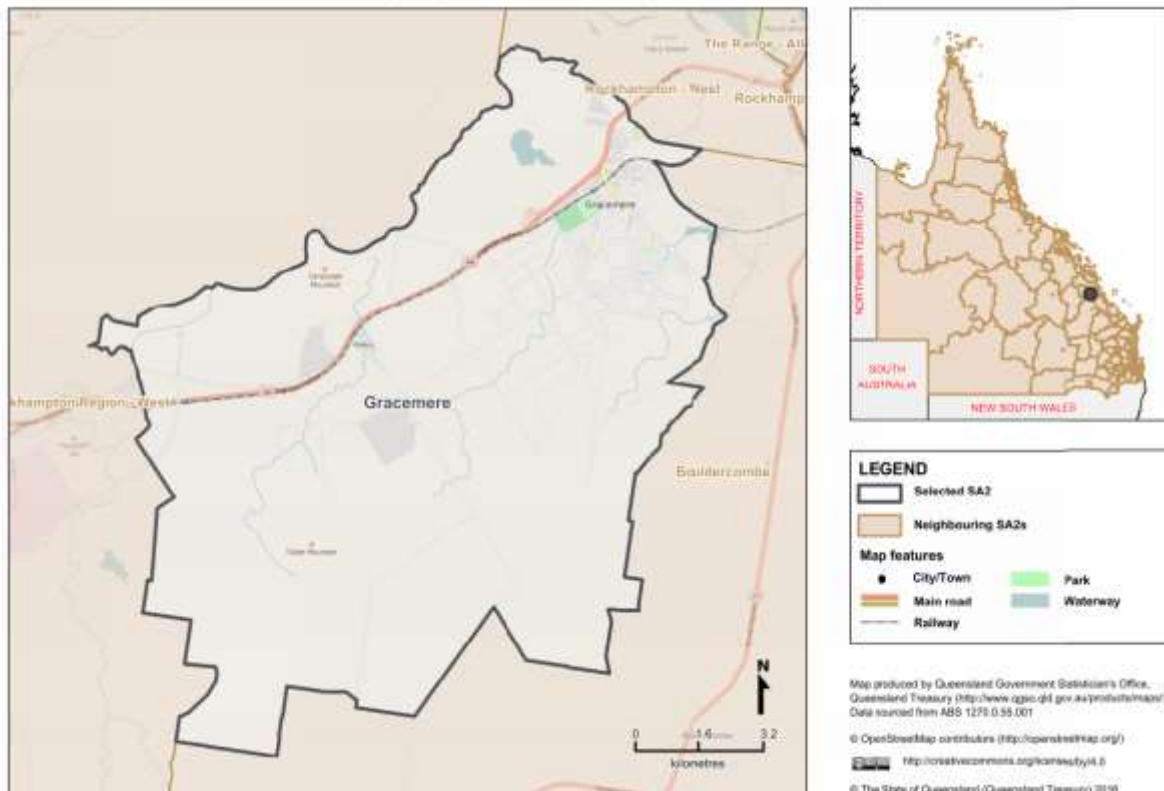
**CAPRICORN
ENTERPRISE**
Division of Innovation



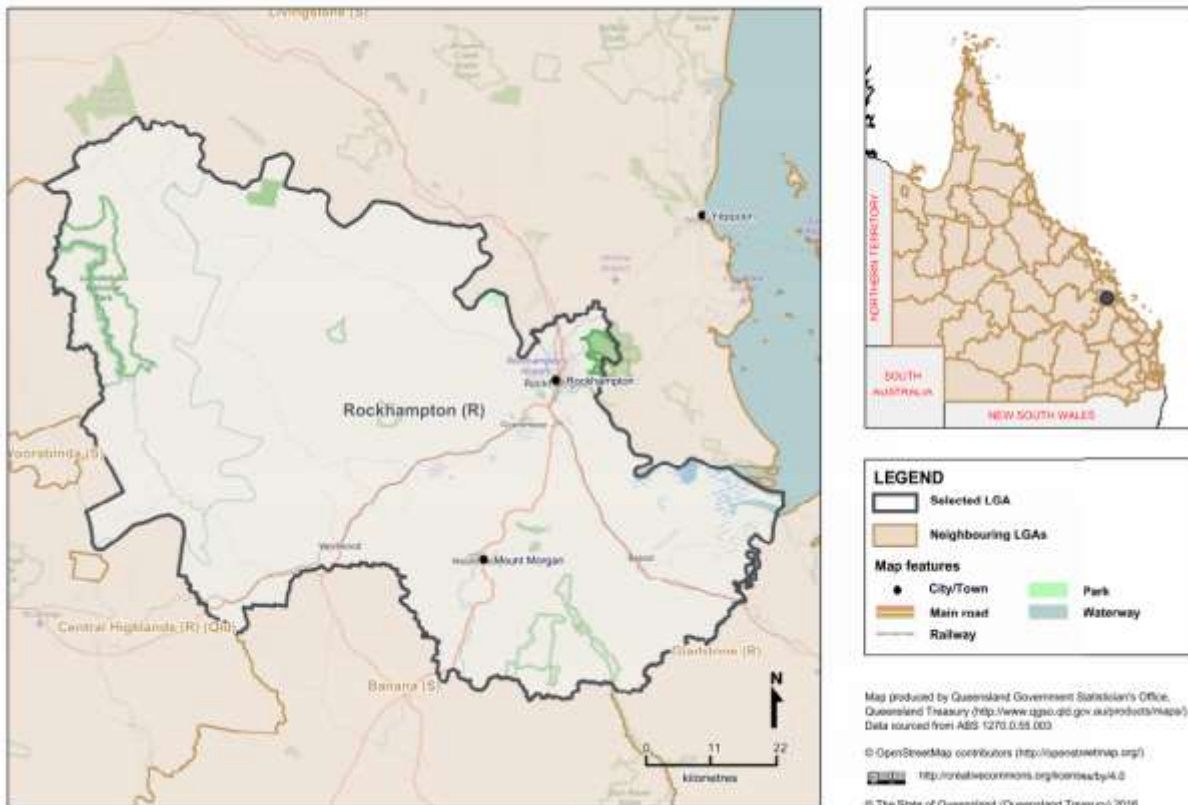
LIVE-PLAY-WORK-INVEST

Gracemere Statistics

Queensland Statistical Areas, Level 2 (SA2), 2016 - Gracemere (ASGS Code 308031210)



Queensland Local Government Areas (LGA), 2016 - Rockhampton (R) (ASGS Code 36370)



Source: Queensland Treasury and Trade, 2016

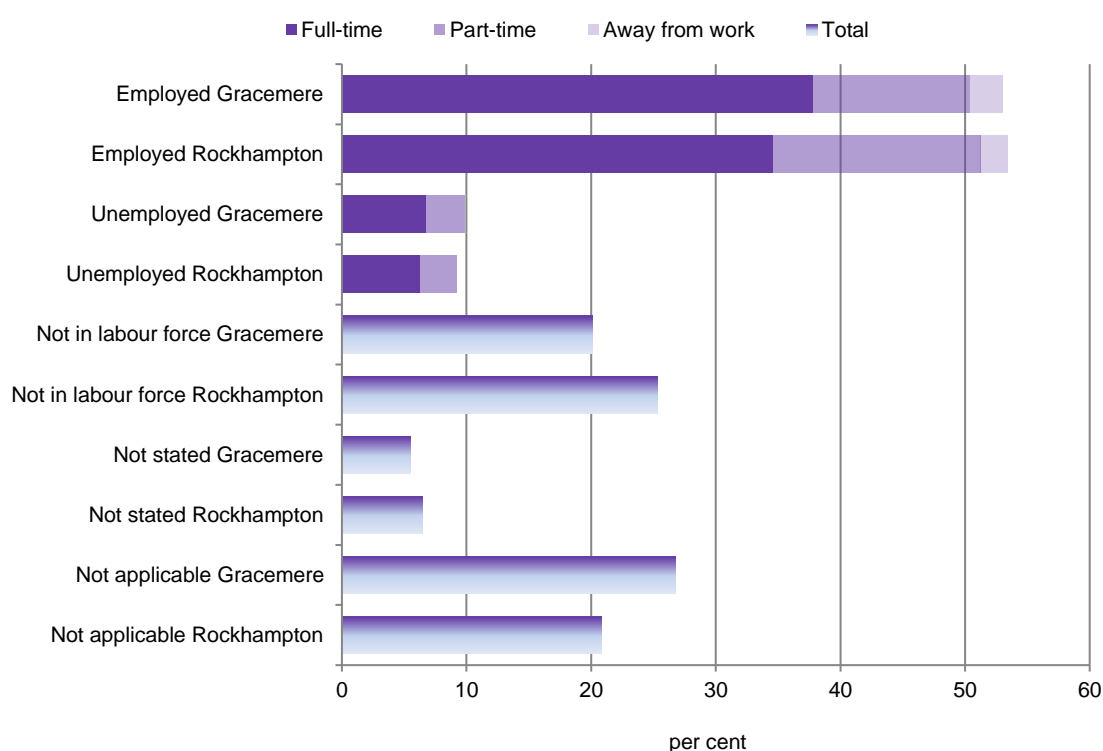
Gracemere is a town in the Rockhampton Regional Council area that has grown from 4,272 persons in 1991 to 12,758 persons in 2019. While Gracemere has served as a dormitory town for Rockhampton, establishment of the Gracemere Industrial Area has assisted in the development of greater industry in the locality.

Employment

Labour force status applies to all people aged 15 years and over. The labour force includes people who are employed full-time, part-time and away from work and those who are unemployed but looking for full-time or part-time work. Of the 11,665 persons counted on Census night, 2016, in Gracemere SA2, 3,126 persons (26.8%) were under the age of 15 years. A further 2,343 persons (20.1%) were not in the labour force. This may be due to age, child rearing, disability, not actively looking for work or other reasons.

In Rockhampton (R), which had a population count of 79,726 persons at the time of the 2016 Census, there was a smaller proportion of persons under 15 years (20.8%, 16,576 persons) and a larger proportion not in the labour force (25.4%, 20,213 persons).

Figure 1 Labour force status (a)(b), Gracemere SA2 and Rockhampton (R), 2016



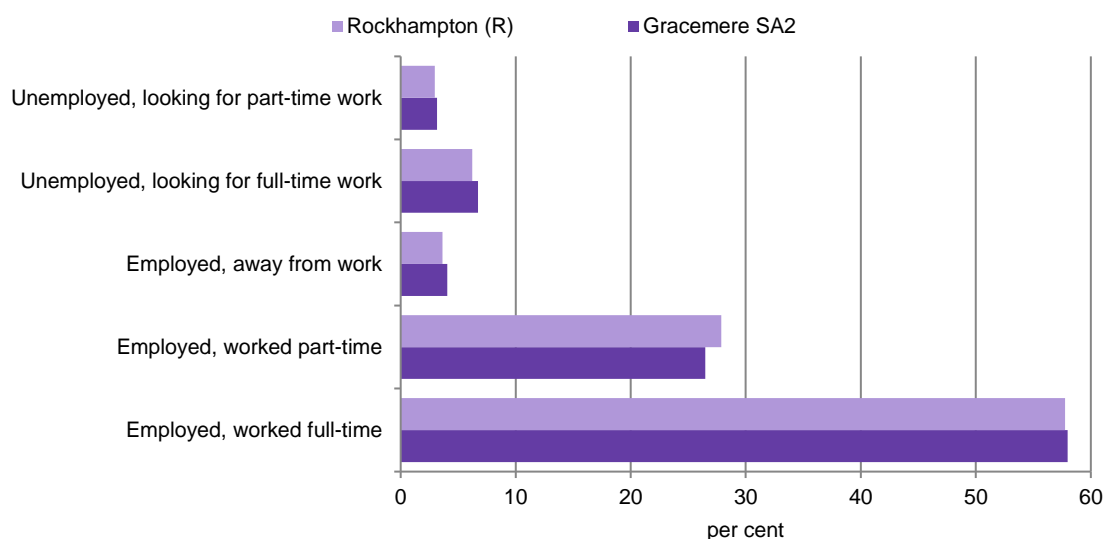
(a) Employed worked full-time is defined as having worked 35 hours or more in all jobs during the week prior to Census night.

(b) Employed away from work comprises employed persons who did not work any hours in the week prior to Census night.

Source: ABS *Census of Population and Housing, 2016, General Community Profile – G43, G01 and G04*.

More than three in five (65.2%) persons 15 years and over in the Gracemere SA2 were in the labour force (5,564 persons) in 2016. In Rockhampton (R), 59.8 per cent of the 15 years and over population were in the labour force (37,790 persons). The labour force of Gracemere was 14.7 per cent of the Rockhampton (R) labour force.

Figure 2 Labour force, Gracemere SA2 and Rockhampton (R), 2016



(a) Based on persons aged 15 years and over and by place of usual residence.

(b) Employed worked full-time is defined as having worked 35 hours or more in all jobs during the week prior to Census night.

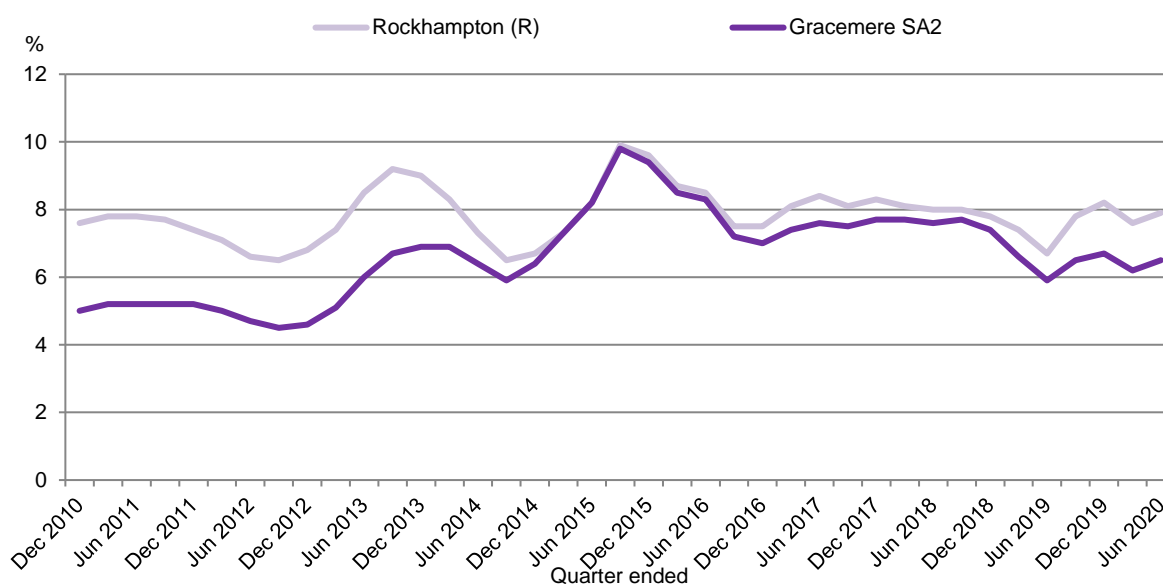
(c) Employed away from work comprises employed persons who did not work any hours in the week prior to Census night.

Source: ABS Census of Population and Housing, 2016, *General Community Profile – G43*

At the time of the 2016 Census, 9.9 per cent of the Gracemere SA2 labour force stated they were unemployed (550 persons) in comparison to 9.2 per cent of Rockhampton (R) (3,475 persons).

In the June quarter 2020, the unemployment rate in Gracemere SA2 was 6.5%, lower than in Rockhampton (R), 7.9%. The unemployment rate was 0.6 percentage points higher in Gracemere and 1.2 percentage points higher in Rockhampton (R) than in the June quarter 2019. Rates had been declining prior to the September 2019 quarter.

Figure 3 Unemployment rate, smoothed, Rockhampton (R) and Gracemere SA2, 2010-2020



Source: Australian Government Department of Employment, *Small area labour markets Australia*, various editions.

At the time of the 2016 Census, the largest occupational group of employed persons in the Gracemere SA2 area was technicians and trades workers (880 persons), followed by machinery operators and drivers (701 persons) and clerical and administrative workers (680 persons) (Table 1). Larger proportions of Rockhampton (R) residents were managers, professionals and labourers than in Gracemere SA2.

Table 1 Employed persons (a)(b) by occupation, Gracemere SA2 and Rockhampton (R), 2016

Occupation (c)	Gracemere SA2		Rockhampton Regional Council area		Region as a proportion of Rockhampton (R)
	number	%	number	%	%
Managers	367	7.3	3,101	9.0	11.8
Professionals	598	11.9	5,517	16.1	10.8
Technicians and Trades Workers	880	17.6	5,657	16.5	15.6
Community and Personal Service Workers	665	13.3	4,249	12.4	15.7
Clerical and Administrative Workers	680	13.6	4,510	13.1	15.1
Sales Workers	515	10.3	3,404	9.9	15.1
Machinery Operators and Drivers	701	14.0	3,093	9.0	22.7
Labourers	541	10.8	4,335	12.6	12.5
Inadequately described/not stated	69	1.4	464	1.4	14.9
Total	5,012	100.0	34,314	100.0	14.6

(a) Based on place of usual residence.

(b) Aged 15 years and over.

(c) Based on Australian Bureau of Statistics, Australian Standard Classification of Occupations, Version 1.2 released in 2013.

Source: Australian Bureau of Statistics, Census of Population and Housing, 2016, *General Community Profile – G57*.

At the time of the 2016 Census, health care and social assistance was the largest employing industry in the Gracemere SA2 area, accounting for 748 (14.9%) of the area's workforce (Table 2). Other significant industries included retail trade (11.1%), mining (9.1%), transport, postal and warehousing (8.9%) and construction (8.0%). A higher proportion of the Rockhampton Regional Council area's mining (26.1%) and transport, postal and warehousing workforce (21.1%) lived in the Gracemere area.

Of the 5,012 workers who lived in Gracemere SA2 at the time of the 2016 Census, one in five (21.2%) worked in the Gracemere SA2. In total, four in five (80.1%) worked in Rockhampton (R). Of the remaining workers who stated where they lived, small numbers worked in elsewhere in Australia (27 persons), while others worked elsewhere in Queensland (17.5% or 876 persons). Other than the Rockhampton (R), the local government areas with the highest numbers of Gracemere SA2 workers were Banana (S) (64 persons), Central Highlands (R) (244 persons), Gladstone (R) (47 persons), Isaac (R) (153 persons) and Livingstone (S) (99 persons).

Table 2 Employed persons (a)(b) by industry, Gracemere SA2 and Rockhampton (R), 2016

Industry (c)	Gracemere SA2		Rockhampton (R)		Region as a proportion of Rockhampton (R)
	number	%	number	%	%
Agriculture, forestry and fishing	90	1.8	698	2.0	12.9
Mining	457	9.1	1,750	5.1	26.1
Manufacturing	192	3.8	2,043	6.0	9.4
Electricity, gas, water and waste services	130	2.6	951	2.8	13.7
Construction	399	8.0	2,476	7.2	16.1
Wholesale trade	179	3.6	1,012	2.9	17.7
Retail trade	554	11.1	3,642	10.6	15.2
Accommodation and food services	341	6.8	2,469	7.2	13.8
Transport, postal and warehousing	448	8.9	2,121	6.2	21.1
Information media and telecommunications	29	0.6	252	0.7	11.5
Financial and insurance services	45	0.9	466	1.4	9.7
Rental, hiring and real estate services	76	1.5	480	1.4	15.8
Professional, scientific and technical services	136	2.7	1,228	3.6	11.1
Administrative and Support Services	118	2.4	908	2.6	13.0
Public Administration and Safety	298	5.9	2,303	6.7	12.9
Education and Training	354	7.1	3,352	9.8	10.6
Health Care and Social Assistance	748	14.9	5,192	15.1	14.4
Arts and Recreation Services	40	0.8	288	0.8	13.9
Other Services	221	4.4	1,505	4.4	14.7
Inadequately described/Not stated	168	3.4	1,168	3.4	14.4
Total	5,012	100.0	34,314	100.0	14.6

(a) Based on usual residence.

(b) Aged 15 years and over.

(c) Based on Australian Bureau of Statistics, Australian and New Zealand Standard Industrial Classification 2006 (Revision 1.0).

Source: Australian Bureau of Statistics, Census of Population and Housing, 2016, *General Community Profile – G51*.

Economy

Business counts

In the 2018/19 financial year, there were 462 businesses registered in Gracemere SA2, a decrease of 2.1 per cent or 10 businesses less than the previous financial year.

Almost three-fifths (58.9%) of all businesses registered in the Gracemere SA2 were non-employing. About one-quarter (25.1%) had one to four employees while there were no businesses with more than 200 employees. Almost one in ten (10.6%) businesses had between 5 and 19 employees.

The majority of non-employing, or owner operated, businesses were in the agriculture, forestry and fishing industry (74 businesses), followed by construction (45 businesses) and transport, postal and warehousing (33 businesses).

The construction industry had the largest proportion of businesses (19.5%), followed by agriculture, forestry and fishing (17.5%) and transport, postal and warehousing (12.3%).

Table 3 Business counts by employment size, Gracemere SA2, 2018/19(a)

	No. of employees					Total
	Non employing	1-4	5-19	20-199	200+	
Accommodation and Food Services	0	5	3	3	0	8
Administrative and Support Services	6	3	0	0	0	17
Agriculture, Forestry and Fishing	74	6	3	0	0	81
Arts and Recreation Services	3	0	0	0	0	5
Construction	45	36	10	3	0	90
Education and Training	3	0	0	0	0	8
Electricity, Gas, Water and Waste Services	5	0	0	0	0	4
Financial and Insurance Services	15	0	0	0	0	18
Health Care and Social Assistance	3	4	3	3	0	11
Information Media and Telecommunications	0	0	0	0	0	0
Manufacturing	14	6	3	3	0	30
Mining	0	3	3	0	0	6
Other Services	19	19	4	0	0	47
Professional, Scientific and Technical Services	11	5	0	0	0	11
Public Administration and Safety	0	0	0	0	0	0
Rental, Hiring and Real Estate Services	22	6	0	0	0	30
Retail Trade	12	3	10	0	0	26
Transport, Postal and Warehousing	33	17	7	0	0	57
Wholesale Trade	7	3	3	3	0	13
Not classified	0	0	0	0	0	0
Total	272	116	49	15	0	462

(a) The data presented in this table have been confidentialised to ensure no individual business can be identified.
Source: ABS, *Counts of Australian Businesses, including Entries and Exits*, various editions, cat. no. 8165.0

Almost three in ten (29.0%) businesses in Gracemere SA2 had a turnover of less than \$50,000 in the financial year 2018/19. A further 12.3 per cent had a turnover between \$50,000 and \$100,000. Businesses earning more than \$2 million accounted for 5.8 per cent of Gracemere SA2 businesses.

Agriculture, forestry and fishing had the largest number of businesses with a turnover of less than \$50,000 followed by transport, postal and warehousing and financial and insurance services.

The wholesale trade and construction industries had the largest number of businesses earning more than \$2 million.

Table 4 Business Counts by turnover range, Gracemere SA2, 2018/19(a)

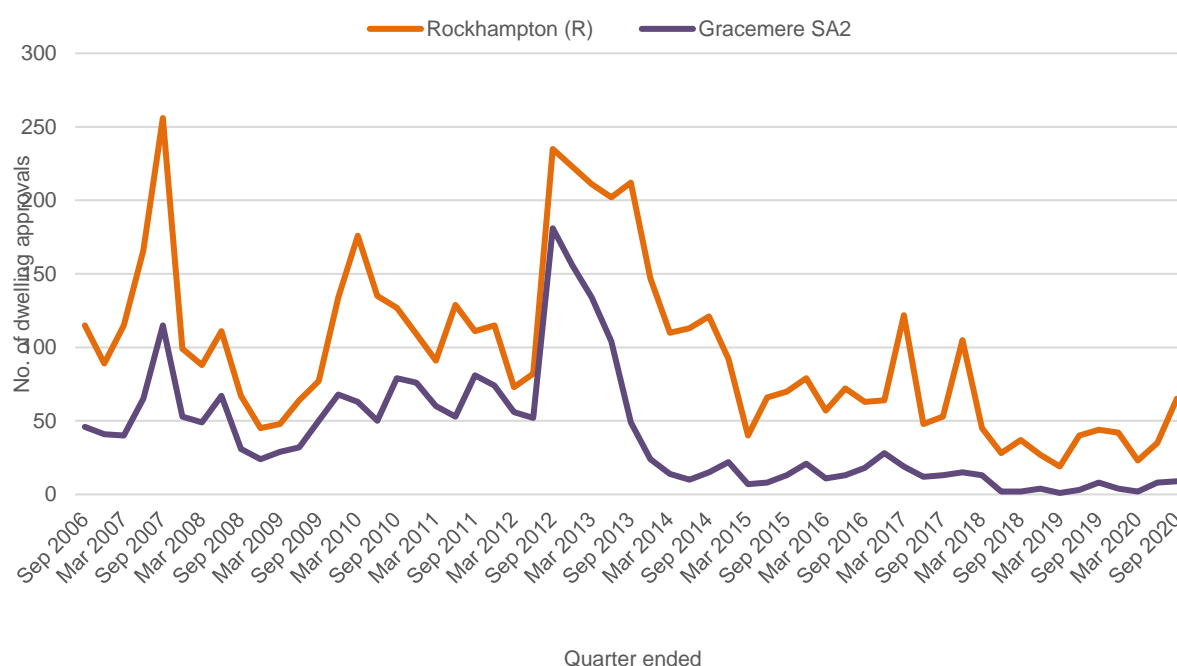
	Turnover range (\$)					
	0 to less than 50k	50k to less than 100k	100k to less than 200k	200k to less than 500k	500k to less than 2m	2m or more
Accommodation and Food Services	0	0	0	3	3	3
Administrative and Support Services	3	0	5	0	0	0
Agriculture, Forestry and Fishing	38	16	11	9	9	0
Arts and Recreation Services	3	3	0	0	0	0
Construction	8	3	32	32	18	6
Education and Training	0	0	3	0	0	0
Electricity, Gas, Water and Waste Services	3	0	0	0	0	0
Financial and Insurance Services	15	3	3	0	0	0
Health Care and Social Assistance	3	3	0	5	3	0
Information Media and Telecommunications	0	0	0	0	0	0
Manufacturing	6	7	8	5	3	3
Mining	0	0	0	3	0	0
Other Services	10	8	10	13	4	3
Professional, Scientific and Technical Services	5	0	3	3	0	0
Public Administration and Safety	0	0	0	0	0	0
Rental, Hiring and Real Estate Services	12	5	5	3	4	0
Retail Trade	4	6	3	3	3	3
Transport, Postal and Warehousing	21	3	4	18	11	3
Wholesale Trade	3	0	3	0	4	6
Not Classified	0	0	0	0	0	0
Total	134	57	90	97	62	27

(a) The data presented in this table have been confidentialised to ensure no individual business can be identified.
Source: ABS, *Counts of Australian Businesses, including Entries and Exits*, various editions, cat. no. 8165.0

Building approvals

In the quarter ending 30 September 2020, there were 65 new dwelling approvals in the Rockhampton (R) and nine in the Gracemere SA2 being 13.8% of Rockhampton (R) approvals.

Figure 4 Dwelling approvals, Gracemere SA2 and Rockhampton (R), 2006-2020



Source: ABS, *Building Approvals, Australia*, various editions, cat. no. 8731.0

In the quarter ending September 2020, the value of building approvals for new houses in Gracemere SA2 accounted for a small proportion (16.8%) of all new approval value in the Rockhampton (R) area. The value of non-residential building approvals in Gracemere SA2 was generally a small proportion of the Rockhampton (R) total.

Table 5 Value of residential and non-residential building approvals, Rockhampton (R) and Gracemere SA2

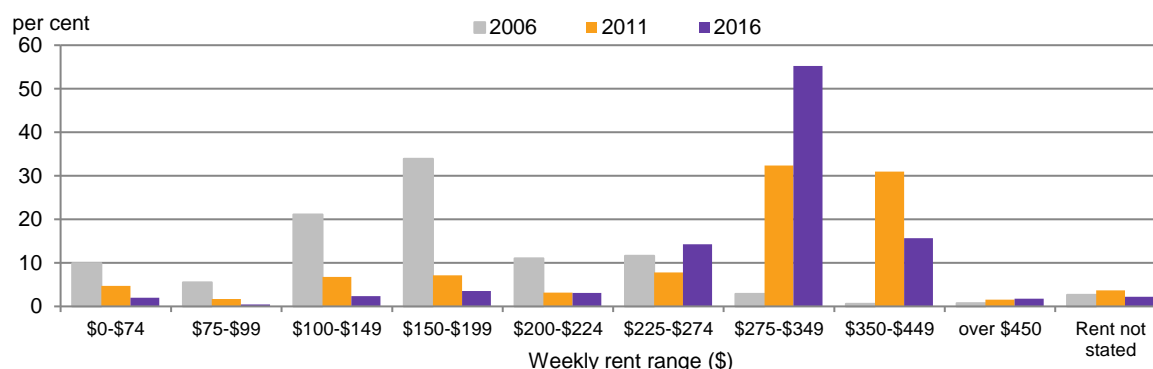
Quarter ended	Residential building value						Non-residential building value (\$000)	
	New Houses (\$000)		New Other residential building (\$000)		Alterations, additions and conversions (\$000)			
	Rockhampton (R)	Gracemere SA2	Rockhampton (R)	Gracemere SA2	Rockhampton (R)	Gracemere SA2	Rockhampton (R)	Gracemere SA2
Mar 17	14,834	4,727	10,500	0	3,170	422	27,954	100
Jun 17	12,206	3,113	0	0	4,571	147	6,905	0
Sep 17	13,083	2,709	900	439	2,293	402	10,375	1,538
Dec 17	14,234	4,072	12,000	0	2,131	139	30,644	0
Mar 18	11,525	3,000	328	0	3,765	346	13,257	0
Jun 18	4,843	487	2,100	0	1,529	219	2,522	0
Sep 18	10,031	509	785	0	2,611	274	6,833	55
Dec 18	8,213	944	0	0	2,745	396	8,049	131
Mar 19	3,842	254	690	0	3,223	274	19,033	2,961
Jun 19	7,533	722	3,626	0	3,374	451	12,516	750
Sep 19	12,134	2,049	450	0	5,189	434	8,140	328
Dec 19	11,284	1,034	0	0	5,049	275	26,394	120
Mar 20	6,658	543	0	0	3,044	355	11,343	0
Jun 20	9,543	2,342	0	0	11,566	298	9,055	137
Sep 20	15,245	2,568	3,330	0	47,297	560	20,306	108

Source: ABS, *Building Approvals, Australia, various editions*, cat. no. 8731.0

Weekly rents

Although rental values do not compare directly across time because of inflation, it is interesting to note changes in ranges. More than one-third (36.6%) of renters in Gracemere SA2 in 2006 paid less than \$150 rent per week, while in 2016, the proportion of renters paying this amount was 4.8 per cent. More than half (55.2%) of renters paid between \$275 and \$349 per week in 2016.

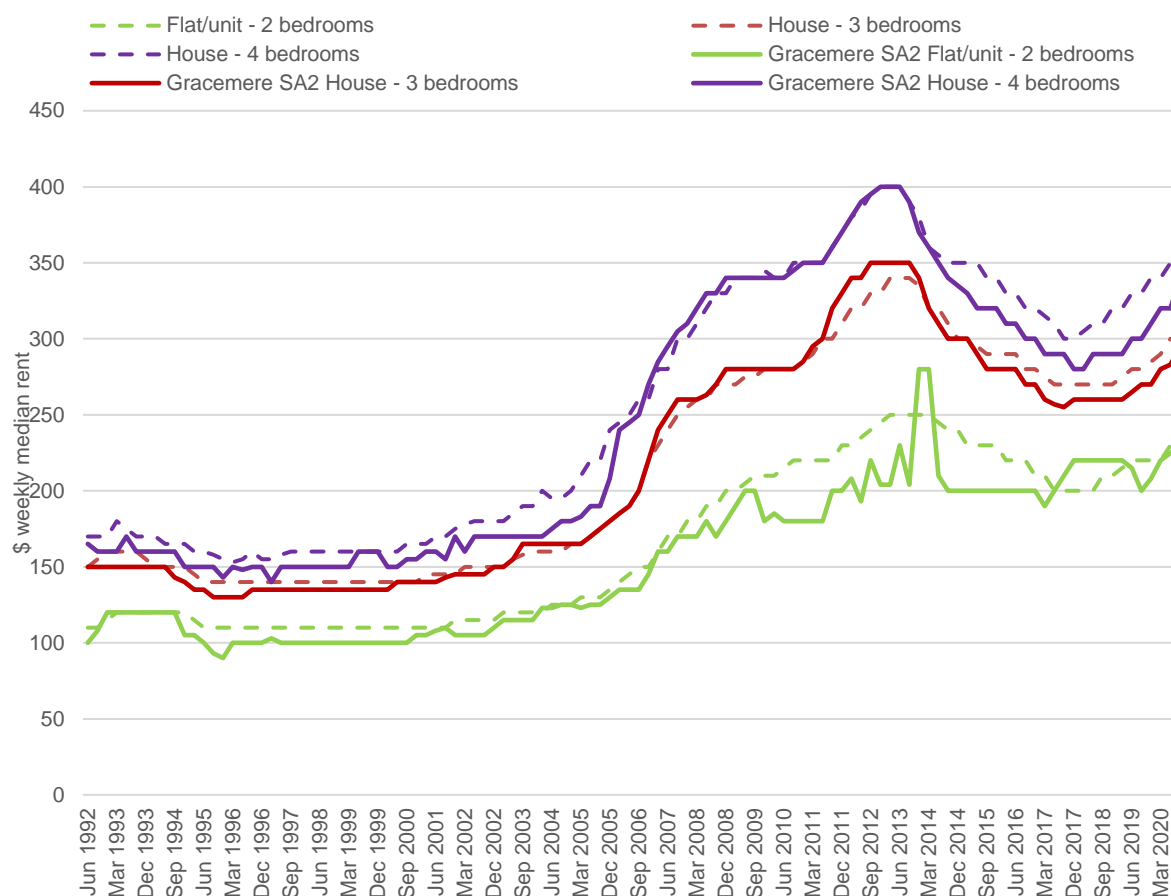
Figure 5 Weekly rent (a), Gracemere, 2006-2016



(a) Count of private dwelling being rented, including dwelling occupied rent-free.

Source: ABS, *Census of Population and Housing, 2016, Time Series Profile – T19*.

Weekly rents in the September quarter 2020 were lower in Gracemere SA2 than in Rockhampton (R). Median rents for houses in Gracemere SA2 have increased from the lows in 2017-18.



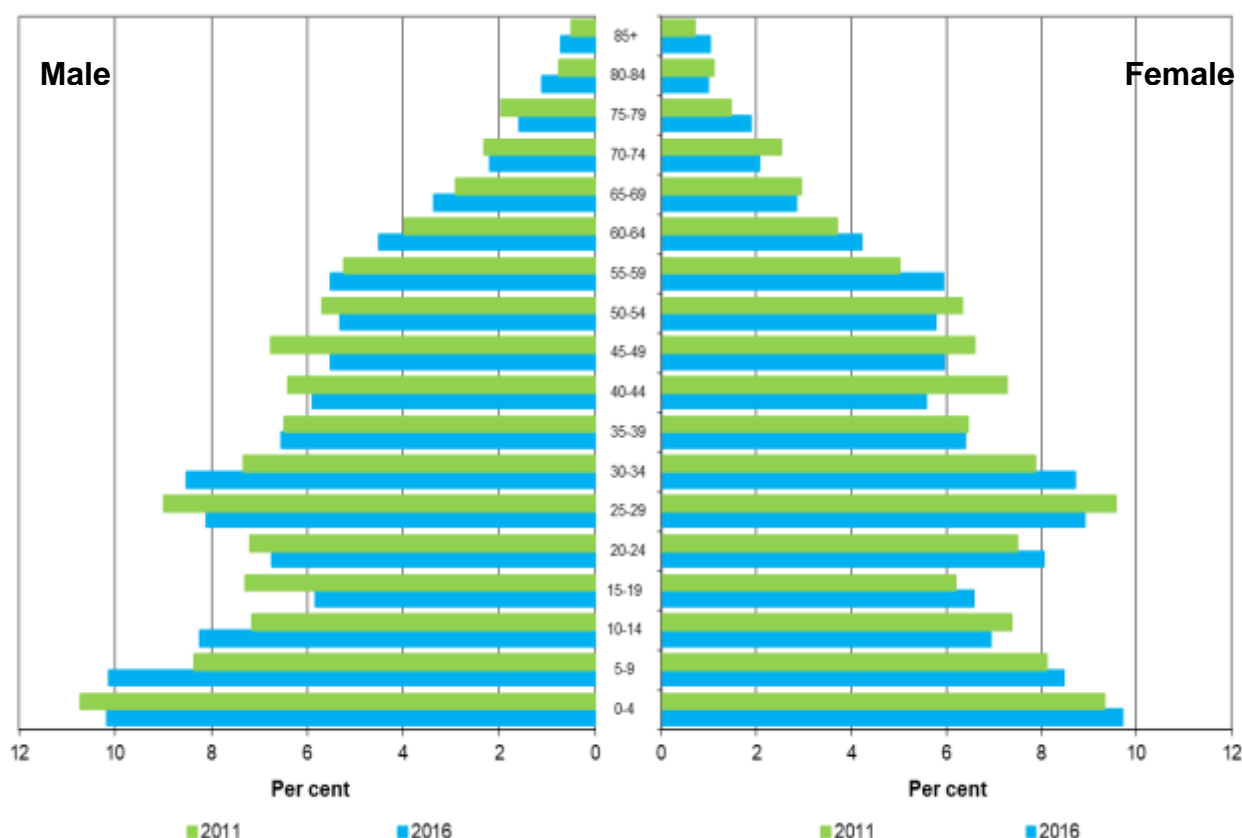
Source: Residential Tenancies Authority, *Rental Bonds data* (Queensland Government Statistician's Office derived).

Population

The Gracemere SA2 had an estimated resident population of 12,758 persons as at 30 June 2019, compared to 81,512 persons in the whole of Rockhampton (R). The locality had an average annual growth rate of 2.5% over the five-year period 2014 to 2019, significantly higher than the broader local government area (-0.2%) and Queensland (1.5%).

The Gracemere SA2 exhibits a relatively young profile in the population pyramid, as represented by the larger proportions of younger persons in comparison to older persons. While there has been some balancing of the proportions of persons in different age groups between 2011 and 2016, Gracemere continues to have a larger proportion of children. It also continues to have higher percentages of adults in the 25 to 34 year old age groups, possibly reflecting Gracemere's position as an affordable location for young families.

Figure 6 Population pyramid (a), age by sex, Gracemere SA, 2011-2016

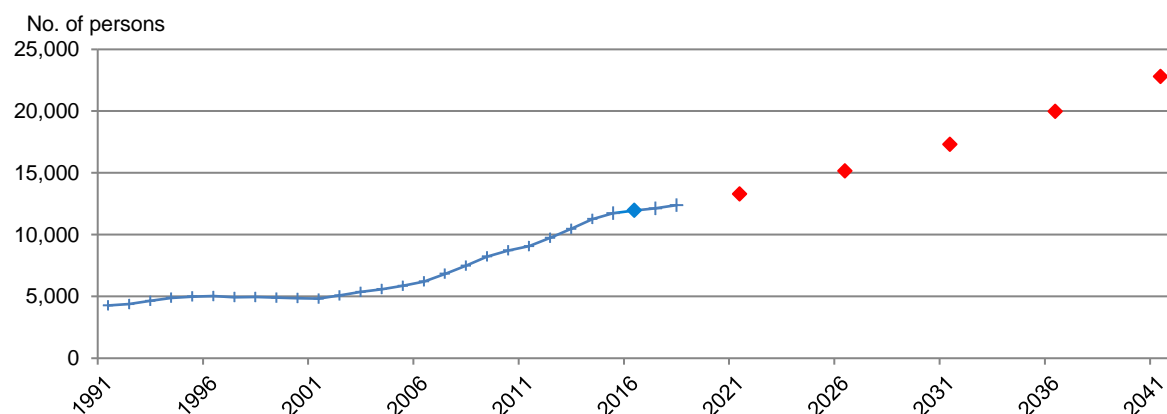


(a) Based on place of usual residence.

Source: ABS, Census of Population and Housing, 2016, *Time Series Profile – T03*

Gracemere SA2 experienced high growth rates between 2011 and 2016, with an average annual increase of 5.8 per cent. This is significantly higher than the average annual growth rate in Rockhampton (R) of 0.7 per cent. Gracemere is projected to continue to have higher average annual growth rates than Rockhampton (R), 2.6 per cent compared to 1.0 per cent respectively in the years to 2041. Gracemere is projected to have 22,796 residents in 2041 while Rockhampton (R) is projected to have 104,153 residents, with Gracemere increasing from 14.7% of the LGA's population to 21.9%.

Figure 7 Actual and projected population (medium series), Gracemere SA2, 1991-2041



Source: ABS, *Regional Population Growth, Australia*, 2018, cat. no. 3218.0 and unpublished data. Queensland Treasury and Trade, *Queensland Government Population Projections*, 2018 edition (medium series).

Education

Of persons aged 15 years and over in Gracemere SA2 at the time of the 2016 Census, 52.0 per cent (4,439 persons) held a non-school educational qualification, compared with 52.6 per cent (33,184 persons) in Rockhampton (R) (Table 6). In Gracemere SA2, a higher proportion of people held certificates than in Rockhampton (R).

Table 6 Non-school qualifications (a), Capricorn Region, 2016

Educational qualification	Gracemere SA2	Rockhampton (R)	Region as a % of Rockhampton (R)
	— persons —		%
Bachelor degree or higher	727	7,488	9.7
Advanced diploma and diploma	529	3,807	13.9
Certificate	2,277	14,396	15.8
Total (b)	4,439	33,184	13.4
Persons 15 years and over	8,539	63,150	13.5
Proportion with qualifications	52.0	52.6	..

.. = not applicable

(a) Persons aged 15 years and over and based on place of usual residence.

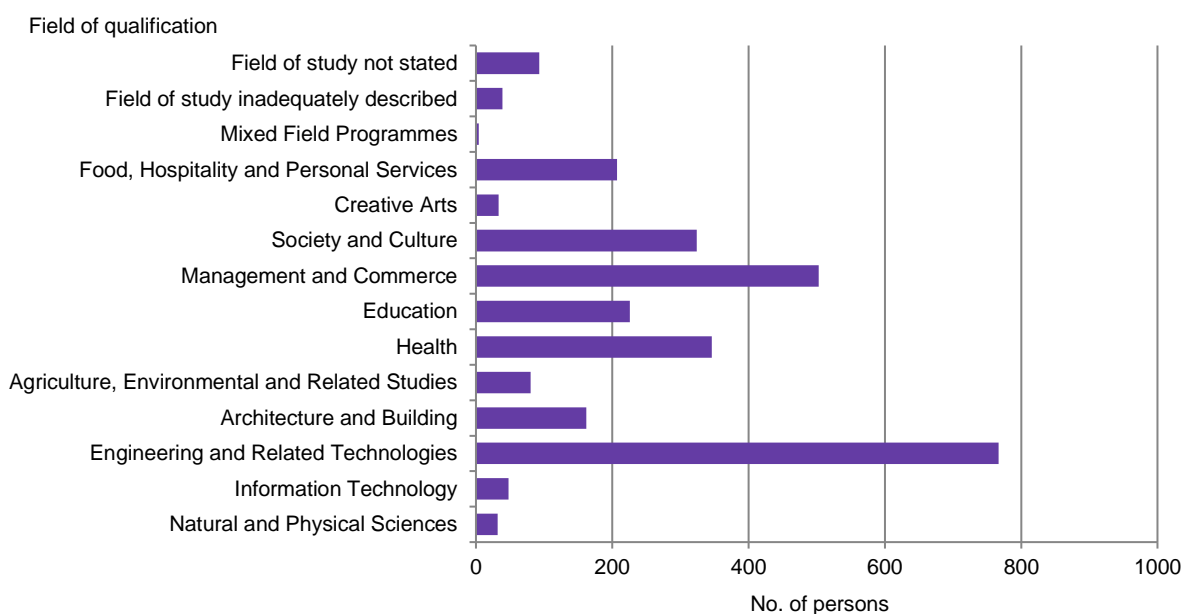
(b) Includes inadequately described and not stated responses.

Source: Australian Bureau of Statistics, Census of Population and Housing, 2016, *General Community Profile – G16*.

In the Gracemere SA2 at the time of the 2016 Census, the most common field of qualification was in engineering and related technologies (26.8%) (Figure 7). This was also the most popular field of study for Rockhampton (R) (23.1%).

Management and commerce was the second most popular field of study for Gracemere SA2 (17.5%), followed by health (12.1%).

Figure 8 Field of educational qualifications (a), Gracemere SA2, 2016



(a) Persons aged 15 years and over with a qualification and based on place of usual residence.

Source: ABS, Census of Population and Housing, 2016, *General Community Profile – G47*.

Disclaimer

This profile was produced by Capricorn Enterprise. All data and information in this report are believed to be accurate and have come from sources believed to be reliable. However, Capricorn Enterprise does not guarantee or represent that the data and information are accurate, up to date or complete, and disclaims liability for all claims, losses, damages or costs of whatever nature and howsoever occurring, arising as a result of relying on the data and information, regardless of the form of action, whether in contract, tort (including negligence), breach of statutory duty or otherwise.