

Gracemere Profile Report



LIVE-PLAY-WORK-INVEST

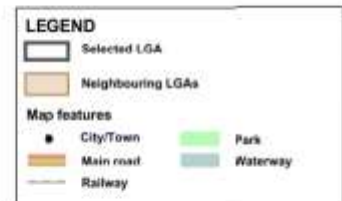
Gracemere Statistics

Queensland Statistical Areas, Level 2 (SA2), 2021 - Gracemere (ASGS Code 308031210)



Map produced by Queensland Government's Office,
Queensland Treasury
<http://www.queensland.gov.au/products/maps>
Data sourced from ABS 1270.0.55.001
© OpenStreetMap contributors (<http://openstreetmap.org/>)
<http://creativecommons.org/licenses/by/4.0/>
© The State of Queensland (Queensland Treasury) 2021

Queensland Local Government Areas (LGA), 2016 - Rockhampton (R) (ASGS Code 36370)



Map produced by Queensland Government Statistician's Office,
Queensland Treasury (<http://www.queensland.gov.au/products/maps/>)
Data sourced from ABS 1270.0.55.003
© OpenStreetMap contributors (<http://openstreetmap.org/>)
<http://creativecommons.org/licenses/by/4.0/>
© The State of Queensland (Queensland Treasury) 2016

Source: Queensland Treasury and Trade, 2021

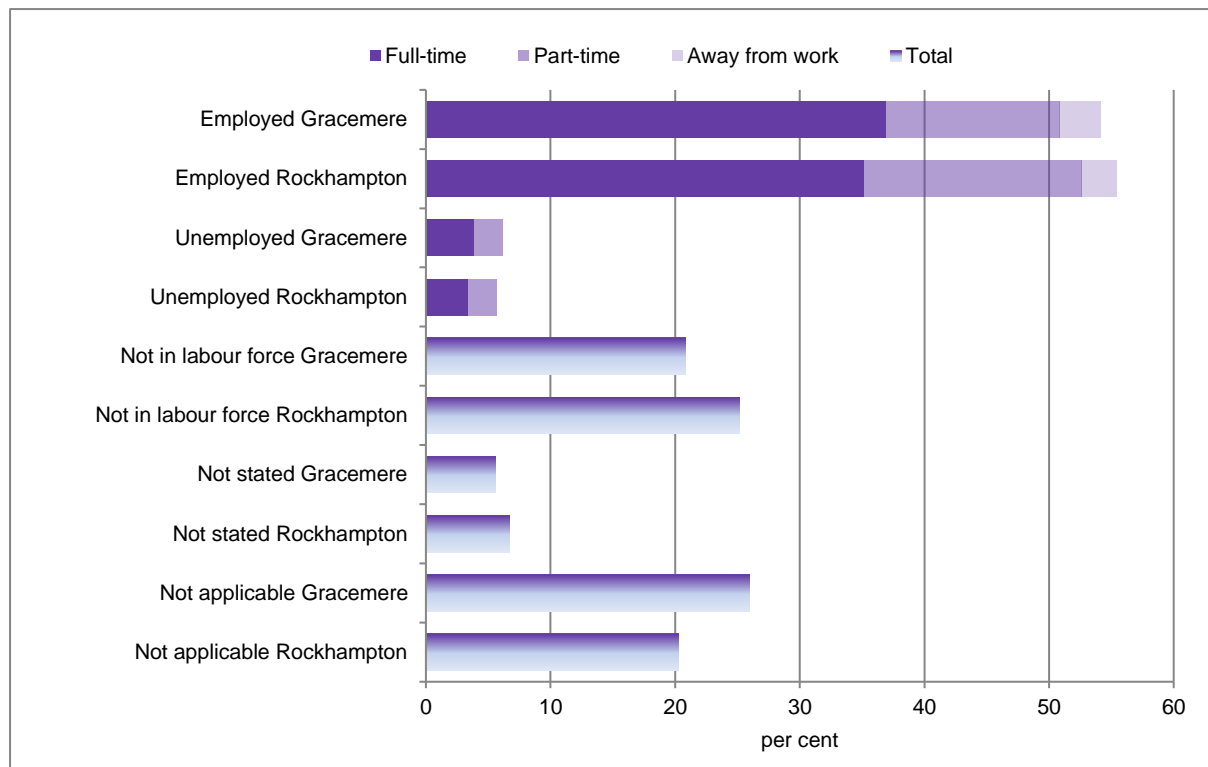
Gracemere is a town in the Rockhampton Regional Council area that has grown from 4,272 persons in 1991 to 12,988 persons in 2023. While Gracemere has served as a dormitory town for Rockhampton, the establishment of the Gracemere Industrial Area has assisted in the development of greater industry in the locality.

Employment

Labour force status applies to all people aged 15 years and over. The labour force includes people who are employed full-time, part-time and away from work and those who are unemployed but looking for full-time or part-time work. Of the 12,379 persons counted on Census night, 2021, in Gracemere SA2, 3,213 persons (26.0%) were under the age of 15 years. A further 2,343 persons (20.9%) were not in the labour force. This may be due to age, child rearing, disability, not actively looking for work or other reasons.

In Rockhampton (R), which had a population count of 81,968 persons at the time of the 2021 Census, there was a smaller proportion of persons under 15 years (20.3%, 16,638 persons) and a larger proportion not in the labour force (25.2%, 20,620 persons).

Figure 1 Labour force status (a)(b), Gracemere SA2 and Rockhampton (R), 2021



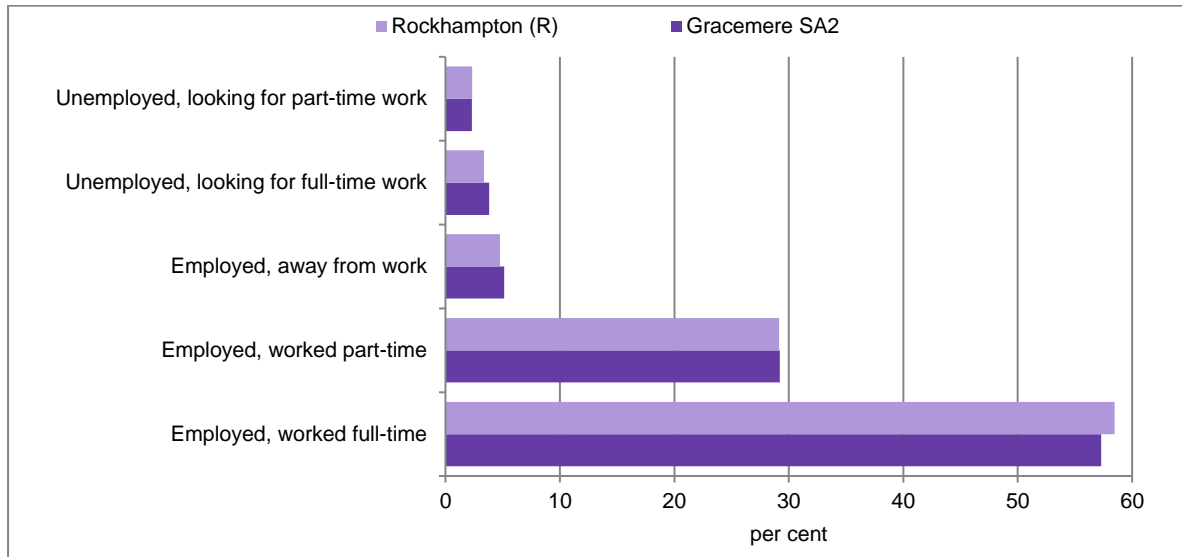
(a) Employed worked full-time is defined as having worked 35 hours or more in all jobs during the week prior to Census night.

(b) Employed away from work comprises employed persons who did not work any hours in the week prior to Census night.

Source: ABS Census of Population and Housing, 2021.

More than three in five (60.3%) persons 15 years and over in the Gracemere SA2 were in the labour force (5,902 persons) in 2021. In Rockhampton (R), 61.1 per cent of the 15 years and over population were in the labour force (39,211 persons). The labour force of Gracemere was 15.1 per cent of the Rockhampton (R) labour force.

Figure 2 Labour force, Gracemere SA2 and Rockhampton (R), 2021

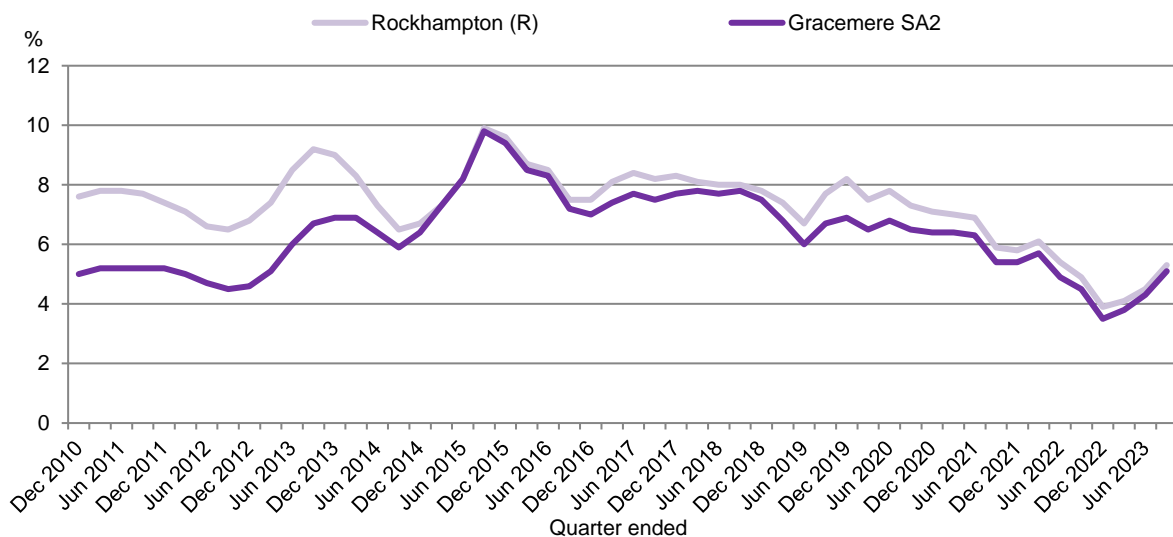


(a) Based on persons aged 15 years and over and by place of usual residence.
 (b) Employed worked full-time is defined as having worked 35 hours or more in all jobs during the week prior to Census night.
 (c) Employed away from work comprises employed persons who did not work any hours in the week prior to Census night.
 Source: ABS *Census of Population and Housing, 2021*.

At the time of the 2021 Census, 6.2 per cent of the Gracemere SA2 labour force stated they were unemployed (363 persons) in comparison to 5.7 per cent of Rockhampton (R) (2,230 persons).

In the September quarter 2023 the unemployment rate in Gracemere SA2 was 5.1%, lower than in Rockhampton (R), 5.3%. Rates were 0.6 percentage points higher than the same quarter 2022 in Gracemere, compared to 0.3 percentage points higher in Rockhampton (R). Unemployment rates have reversed their downward trend while the labour force has been growing.

Figure 3 Unemployment rate, smoothed, Rockhampton (R) and Gracemere SA2, 2010-2023



Source: Australian Government Department of Employment, *Small area labour markets Australia*, various editions.

At the time of the 2021 Census, the largest occupational group of employed persons in the Gracemere SA2 area was technicians and trades workers (911 persons), followed by machinery operators and drivers (791 persons) and clerical and administrative workers (679 persons) (Table 1). Larger proportions of Rockhampton (R) residents were managers, professionals and labourers than in Gracemere SA2.

Table 1 Employed persons (a)(b) by occupation, Gracemere SA2 and Rockhampton (R), 2021

Occupation (c)	Gracemere SA2		Rockhampton Regional Council area		Region as a proportion of Rockhampton (R)
	number	%	number	%	%
Managers	435	7.8	3,219	8.7	13.5
Professionals	634	11.4	6,157	16.6	10.3
Technicians and Trades Workers	911	16.4	5,772	15.6	15.8
Community and Personal Service Workers	768	13.9	5,316	14.4	14.4
Clerical and Administrative Workers	679	12.2	4,548	12.3	14.9
Sales Workers	560	10.1	3,303	8.9	17.0
Machinery Operators and Drivers	791	14.3	3,418	9.2	23.1
Labourers	647	11.7	4,553	12.3	14.2
Inadequately described/not stated	119	2.1	687	1.9	17.3
Total	5,543	100.0	36,979	100.0	15.0

(a) Based on place of usual residence.

(b) Aged 15 years and over.

(c) Based on Australian Bureau of Statistics, Australian Standard Classification of Occupations, Version 1.2 released in 2013.

Source: Australian Bureau of Statistics, Census of Population and Housing, 2021.

Health care and social assistance was the largest employing industry in the Gracemere SA2 area, accounting for 944 (17.0%) of the area's workforce (Table 2) at the time of the 2021 Census. Other significant industries included retail trade (10.4%), transport, postal and warehousing (8.7%), mining (8.1%), and construction (7.5%). A higher proportion of the Rockhampton Regional Council area's mining (24.4%) and transport, postal and warehousing workforce (24.2%) lived in the Gracemere area.

Of the 5,543 workers who lived in Gracemere SA2 at the time of the 2021 Census, one in five (22.5%) worked in the Gracemere SA2. In total, four in five (82.1%) worked in Rockhampton (R). Of the remaining workers who stated where they lived, small numbers worked in elsewhere in Australia (35 persons), while others worked elsewhere in Queensland (17.3% or 958 persons). Other than the Rockhampton (R), the local government areas with the highest numbers of Gracemere SA2 workers were Banana (S) (57 persons), Central Highlands (R) (268 persons), Gladstone (R) (32 persons), Isaac (R) (158 persons) and Livingstone (S) (131 persons).

Table 2 Employed persons (a)(b) by industry, Gracemere SA2 and Rockhampton (R), 2021

Industry (c)	Gracemere SA2		Rockhampton (R)		Region as a proportion of Rockhampton (R)
	number	%	number	%	%
Agriculture, forestry and fishing	89	1.6	671	1.8	13.3
Mining	447	8.1	1,833	5.0	24.4
Manufacturing	240	4.3	2,118	5.7	11.3
Electricity, gas, water and waste services	129	2.3	1,040	2.8	12.4
Construction	418	7.5	2,848	7.7	14.7
Wholesale trade	201	3.6	1,067	2.9	18.8
Retail trade	575	10.4	3,575	9.7	16.1
Accommodation and food services	394	7.1	2,581	7.0	15.3
Transport, postal and warehousing	480	8.7	1,986	5.4	24.2
Information media and telecommunications	15	0.3	176	0.5	8.5
Financial and insurance services	43	0.8	429	1.2	10.0
Rental, hiring and real estate services	70	1.3	435	1.2	16.1
Professional, scientific and technical services	138	2.5	1,261	3.4	10.9
Administrative and Support Services	159	2.9	1,023	2.8	15.5
Public Administration and Safety	303	5.5	2,384	6.4	12.7
Education and Training	404	7.3	3,650	9.9	11.1
Health Care and Social Assistance	944	17.0	6,670	18.0	14.2
Arts and Recreation Services	35	0.6	300	0.8	11.7
Other Services	250	4.5	1,626	4.4	15.4
Inadequately described/Not stated	210	3.8	1,306	3.5	16.1
Total	5,543	100.0	36,979	100	15.0

(a) Based on usual residence.

(b) Aged 15 years and over.

(c) Based on Australian Bureau of Statistics, Australian and New Zealand Standard Industrial Classification 2006 (Revision 1.0).

Source: Australian Bureau of Statistics, Census of Population and Housing, 2021.

Economy

Business counts

As at 30 June 2023, there were 562 businesses registered in Gracemere SA2, an increase of 2.7 per cent or 15 businesses more than the previous financial year.

More than half (59.3%) of all businesses registered in the Gracemere SA2 were non-employing. More than one-quarter (29.2%) had one to four employees while there were no businesses with more than 200 employees. Almost one in ten (11.4%) businesses had between 5 and 19 employees.

The majority of non-employing, or owner operated, businesses were in agriculture, forestry and fishing industry (69 businesses), followed by construction (53 businesses) and other services (42 businesses).

The construction industry had the largest proportion of businesses (20.8%), followed by agriculture, forestry and fishing (14.9%) and other services (13.5%).

Table 3 Business counts by employment size, Gracemere SA2, as at June 2023

	No. of employees					Total
	Non employing	1-4	5-19	20-199	200+	
Accommodation and Food Services	5	6	5	3	0	19
Administrative and Support Services	10	9	0	3	0	21
Agriculture, Forestry and Fishing	69	14	0	0	0	84
Arts and Recreation Services	3	0	3	0	0	4
Construction	53	50	13	0	0	117
Education and Training	4	3	3	0	0	8
Electricity, Gas, Water and Waste Services	0	3	3	0	0	3
Financial and Insurance Services	3	3	0	0	0	4
Health Care and Social Assistance	12	5	4	3	0	22
Information Media and Telecommunications	0	0	0	0	0	0
Manufacturing	16	5	4	0	0	26
Mining	3	3	3	0	0	7
Other Services	42	28	6	0	0	76
Professional, Scientific and Technical Services	20	5	3	0	0	27
Public Administration and Safety	0	0	0	0	0	0
Rental, Hiring and Real Estate Services	32	4	3	0	0	39
Retail Trade	17	0	7	0	0	26
Transport, Postal and Warehousing	36	21	4	0	0	62
Wholesale Trade	8	5	3	0	0	17
Not classified	0	0	0	0	0	0
Total	333	164	64	9	0	562

(a) The data presented in this table have been confidentialised to ensure no individual business can be identified.
Source: ABS, *Counts of Australian Businesses, including Entries and Exits*, various editions, cat. no. 8165.0

Less than one quarter (23.1%) of all businesses in Gracemere SA2 had a turnover of less than \$50,000 as at 30 June 2023. A further 30.2 per cent had a turnover between \$50,000 and \$200,000. Businesses earning more than \$2 million accounted for 6.9 per cent of Gracemere SA2 businesses.

Agriculture, forestry and fishing had the largest number of businesses with a turnover of less than \$50,000 followed by other services and construction.

Table 4 Business Counts by turnover range, Gracemere SA2, 2023(a)

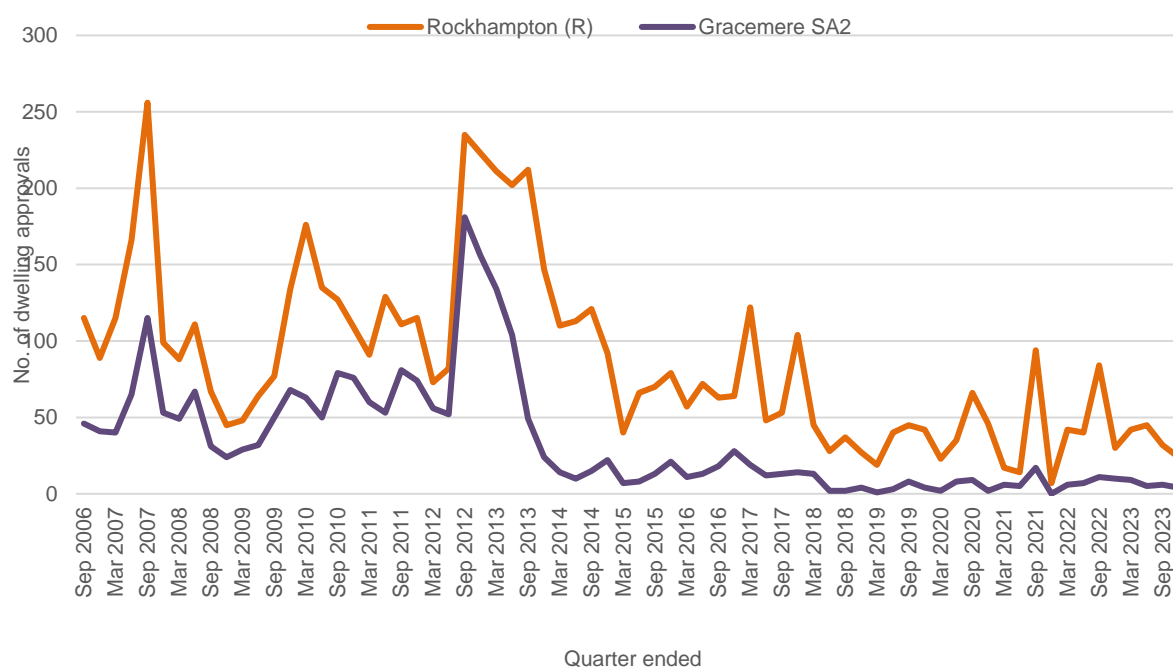
	Turnover range (\$)					
	0 to less than 50k	50k to less than 200k	200k to less than 2m	2m to less than 5m	5m to less than 10m	10m or more
Accommodation and Food Services	3	6	8	3	0	0
Administrative and Support Services	0	11	8	0	0	0
Agriculture, Forestry and Fishing	25	29	26	3	0	3
Arts and Recreation Services	0	0	0	0	0	0
Construction	17	34	58	5	3	3
Education and Training	3	3	0	0	0	0
Electricity, Gas, Water and Waste Services	3	0	0	0	0	0
Financial and Insurance Services	0	0	3	0	0	0
Health Care and Social Assistance	6	9	6	0	0	0
Information Media and Telecommunications	0	0	0	0	0	0
Manufacturing	3	10	10	3	0	0
Mining	0	0	4	0	0	0
Other Services	22	23	28	0	0	0
Professional, Scientific and Technical Services	13	8	5	3	0	0
Public Administration and Safety	0	0	0	0	0	0
Rental, Hiring and Real Estate Services	13	10	15	0	0	0
Retail Trade	6	5	11	0	3	0
Transport, Postal and Warehousing	12	19	24	4	0	0
Wholesale Trade	4	3	10	3	0	0
Not Classified	0	0	0	0	0	0
Total	130	170	216	24	6	9

(a) The data presented in this table have been confidentialised to ensure no individual business can be identified. Source: ABS, *Counts of Australian Businesses, including Entries and Exits*, various editions, cat. no. 8165.0

Building approvals

In the quarter ending 31 December 2023, there were 24 new dwelling approvals in the Rockhampton (R) and four (4) in the Gracemere SA2.

Figure 4 Dwelling approvals, Gracemere SA2 and Rockhampton (R), 2006-2023



Source: ABS, *Building Approvals, Australia*, various editions, cat. no. 8731.0

In the quarter ending December 2023, Gracemere SA2 accounted for 12.8% of the value of building approvals for new houses in Rockhampton (R). The value of non-residential building approvals in Gracemere SA2 is generally a very small proportion of the Rockhampton (R).

Table 5 Value of residential and non-residential building approvals, Rockhampton (R) and Gracemere SA2

Quarter ended	Residential building value						Non-residential building value (\$000)	
	New Houses (\$000)		New Other residential building (\$000)		Alterations, additions and conversions (\$000)		Rockhampton (R)	Gracemere SA2
	Rockhampton (R)	Gracemere SA2	Rockhampton (R)	Gracemere SA2	Rockhampton (R)	Gracemere SA2		
Jun 20	9,543	2,342	0	0	11,566	298	9,055	137
Sep 20	16,445	2,568	2,420	0	47,297	560	20,306	108
Dec 20	13,208	522	0	0	33,304	246	34,299	0
Mar 21	4,421	1,501	0	0	14,282	242	10,800	4,027
Jun 21	4,637	1,483	0	0	9,853	208	5,300	2,500
Sep 21	16,525	4,595	10,386	0	30,735	1,210	50,326	0
Dec 21	2,906	0	0	0	4,970	21	688	0
Mar 22	10,737	1,625	4,056	0	10,565	513	35,376	0
Jun 22	15,030	2,709	1,800	0	11,406	1,040	16,589	138
Sep 22	17,450	3,385	13,599	578	12,332	801	29,681	185
Dec 22	11,458	2,665	576	576	10,615	458	18,991	343
Mar 23	13,856	2,956	5,069	0	5,782	860	6,945	0
Jun 23	11,754	1,146	5,879	0	7,181	605	24,454	990
Sep 23	11,310	1,522	1,233	588	9,488	812	36,644	84
Dec 23	12,537	1,609	0	0	8,437	523	50,706	4,709

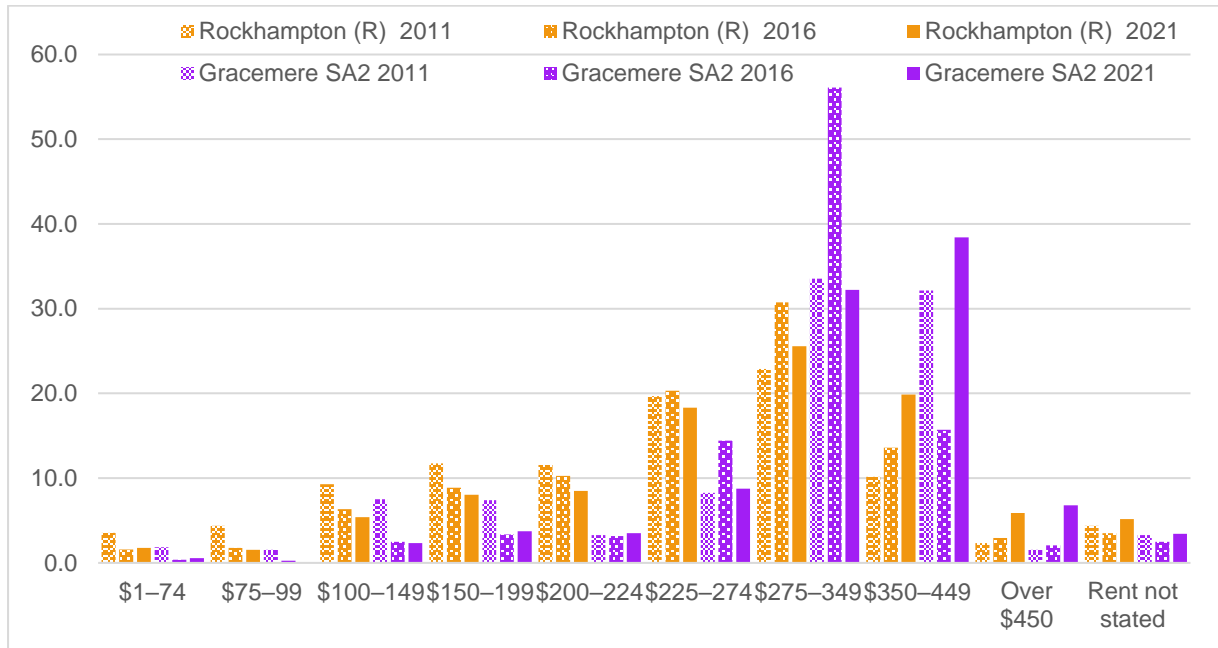
Source: ABS, *Building Approvals, Australia, various editions*, cat. no. 8731.0

Weekly rents

Although rental values do not compare directly across time because of inflation, it can be interesting to note changes in ranges. Almost three in ten (29.0%) renters in Rockhampton (R) in 2011 paid less than \$200 rent per week, while less than two in ten (18.3%) paid less than \$200 per week in Gracemere. In 2021, the proportion of renters paying this amount in Rockhampton (R) was 16.8 per cent and 6.6 per cent in Gracemere.

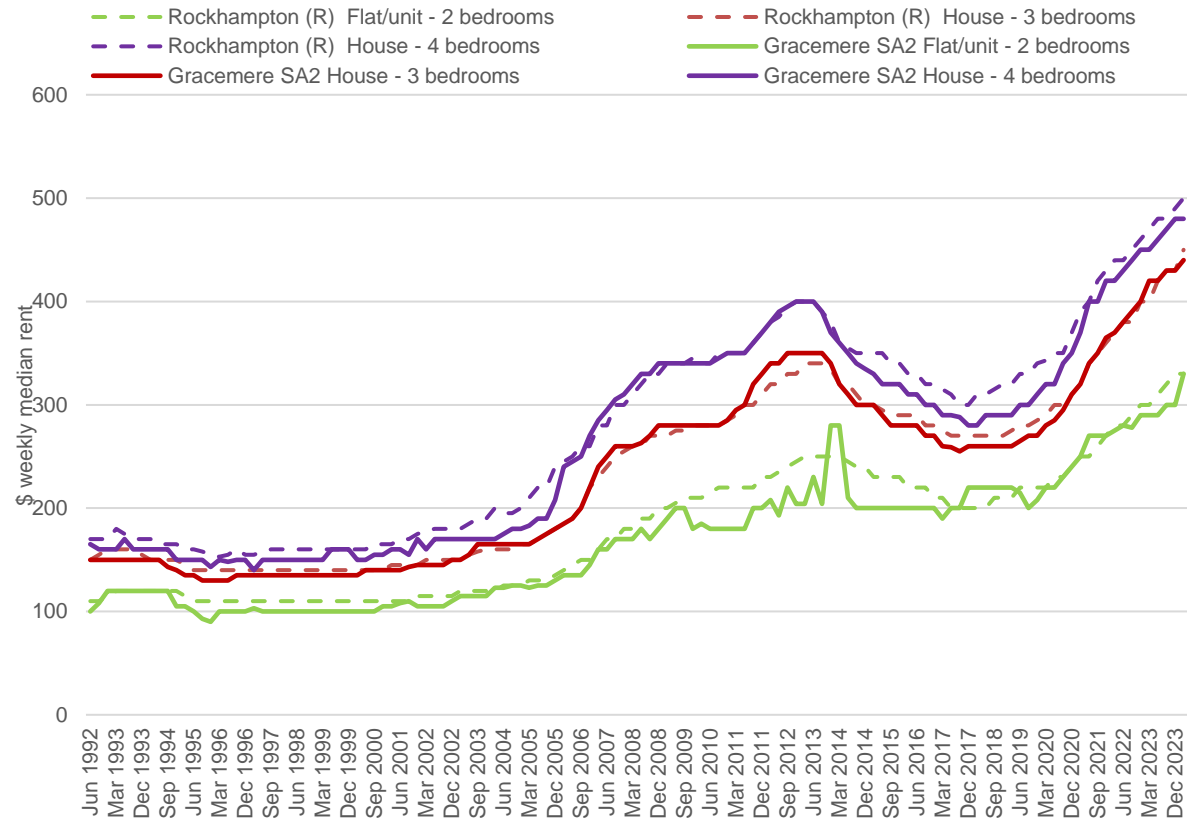
Renters commonly paid between \$225 and \$449 in Rockhampton (R) (63.7%) while 79.4 per cent of renters in Gracemere paid rent in this range in 2021.

Figure 5 Weekly rent (a), Gracemere, 2011-2021



(a) Count of private dwelling being rented, including dwelling occupied rent-free.
Source: ABS, Census of Population and Housing, 2021, *Time Series Profile – T19*.

Weekly rents in the March quarter 2024 were lower in Gracemere SA2 than in Rockhampton (R). Median rents for houses in Gracemere SA2 have increased from lows in 2017-18, and have been higher than the peak in 2013.



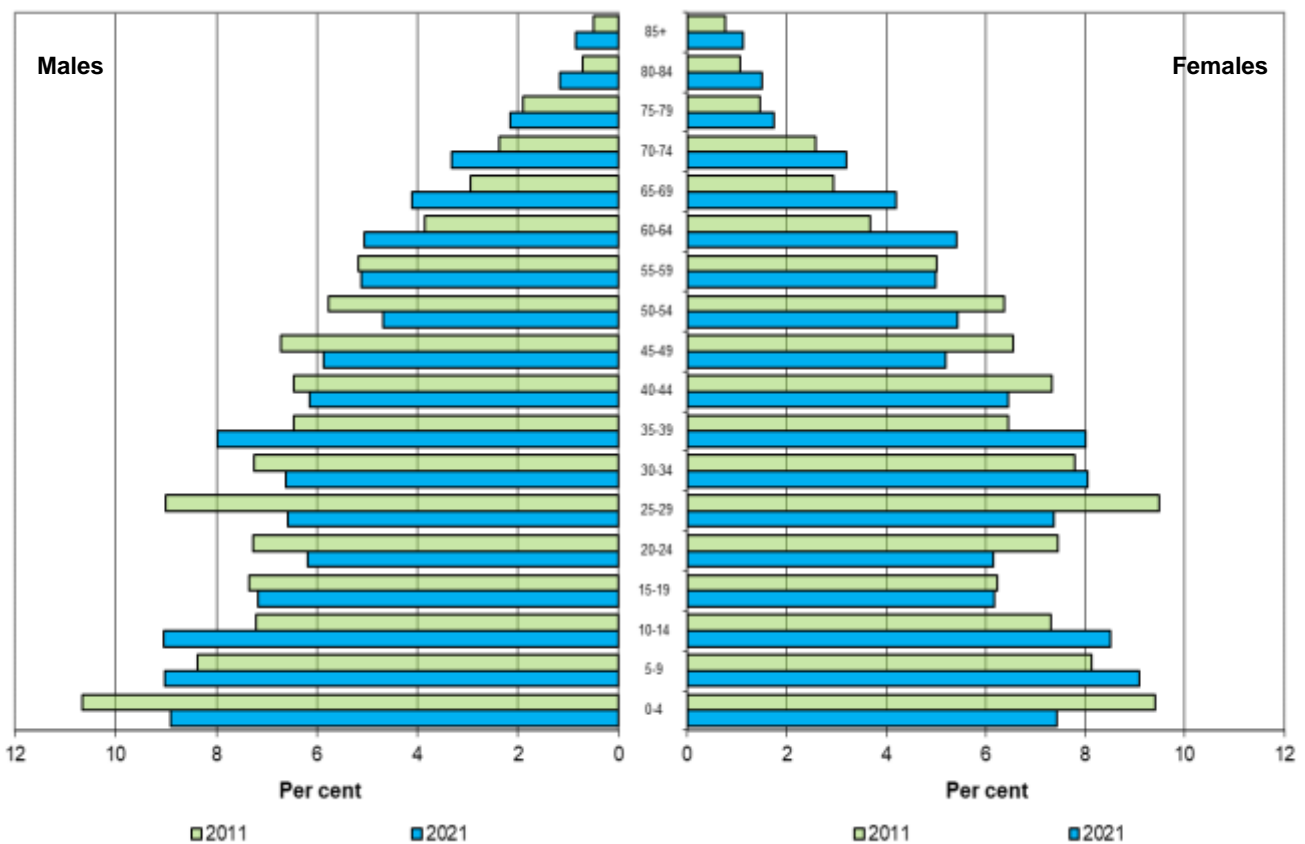
Source: Residential Tenancies Authority, *Rental Bonds data* (Queensland Government Statistician's Office derived).

Population

The Gracemere SA2 had an estimated resident population of 12,988 persons as at 30 June 2023, compared to 84,517 persons in Rockhampton (R). The locality had an average annual growth rate of 1.3% over the five-year period 2018 to 2023, significantly higher than the broader local government area (0.8%).

The Gracemere SA2 exhibits a relatively young profile in the population pyramid, as represented by the larger proportions of younger persons in comparison to older persons. While there has been some balancing of the proportions of persons in different age groups between 2011 and 2021, Gracemere continues to have a larger proportion of children. It also continues to have higher percentages of adults in the 25 to 34 year old age groups, possibly reflecting Gracemere’s position as an affordable location for young families.

Figure 6 Population pyramid (a), age by sex, Gracemere SA, 2011-2021

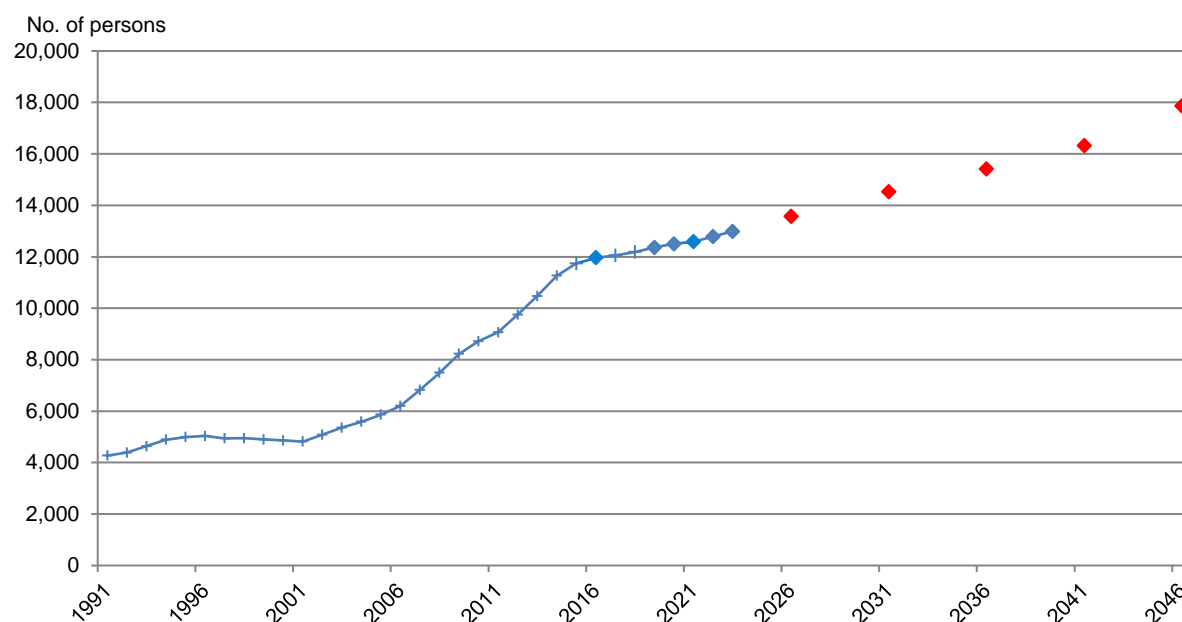


(a) Based on place of usual residence.

Source: ABS, Census of Population and Housing, 2021, *Time Series Profile – T03*

Gracemere SA2 experienced an average annual growth rate between 2013 and 2023 of 2.2 per cent, however the suburb experienced higher growth rates between 2011 and 2016, with slower growth to 2023. The average annual growth rate in Rockhampton (R) was 0.3 per cent. Gracemere is projected to have 17,864 residents in 2046 while Rockhampton (R) is projected to have 96,380 residents, with Gracemere projected to increase from 14.7% of the LGA’s population to 18.5%.

Figure 7 Actual and projected population (medium series), Gracemere SA2, 1991-2046



Source: ABS, *Regional Population Growth, Australia*, 2018, cat. no. 3218.0 and Queensland Treasury and Trade, *Queensland Government Population Projections*, 2023 edition (medium series).

Education

Of persons aged 15 years and over in Gracemere SA2 at the time of the 2021 Census, 49.8 per cent (4,569 persons) held a non-school educational qualification, compared with 55.6 per cent (36,314 persons) in Rockhampton (R) (Table 6). In Gracemere SA2, a higher proportion of people held certificates than in Rockhampton (R).

Table 6 Non-school qualifications (a), Capricorn Region, 2016

Educational qualification	Gracemere SA2	Rockhampton (R)	Region as a % of Rockhampton (R)
	— persons —		%
Bachelor degree or higher	827	8,973	9.2
Advanced diploma and diploma	633	4,315	14.7
Certificate	2,248	15,960	14.1
Total (b)	4,569	36,314	12.6
Persons 15 years and over	9,166	65,325	14.0
Proportion with qualifications	49.8	55.6	..

.. = not applicable

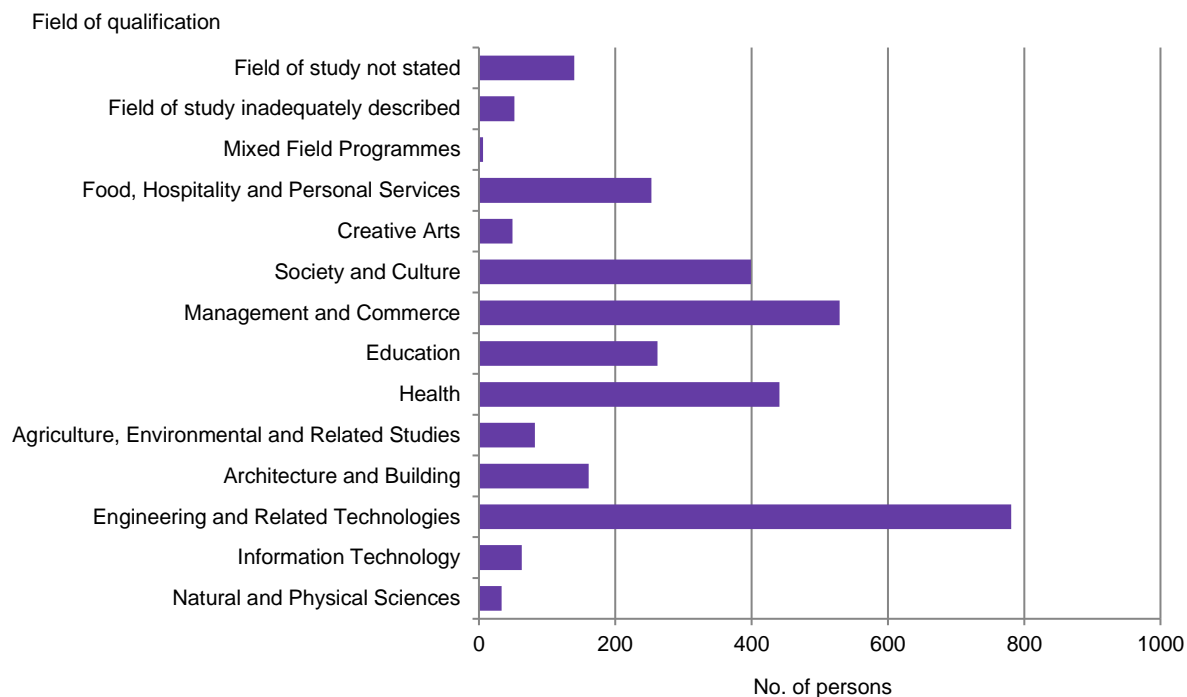
(a) Persons aged 15 years and over and based on place of usual residence.

(b) Includes inadequately described and not stated responses.

Source: Australian Bureau of Statistics, *Census of Population and Housing*, 2021.

In the Gracemere SA2 at the time of the 2021 Census, the most common field of qualification was in engineering and related technologies (23.9%) (Figure 7). This was also the most popular field of study for Rockhampton (R) (20.8%). Management and commerce was the second most popular field of study for Gracemere SA2 (16.2%), followed by health (13.5%).

Figure 8 Field of educational qualifications (a), Gracemere SA2, 2021



(a) Persons aged 15 years and over with a qualification and based on place of usual residence.
 Source: ABS, Census of Population and Housing, 2021.

Disclaimer

This profile was produced by Capricorn Enterprise. All data and information in this report are believed to be accurate and have come from sources believed to be reliable. However, Capricorn Enterprise does not guarantee or represent that the data and information are accurate, up to date or complete, and disclaims liability for all claims, losses, damages or costs of whatever nature and howsoever occurring, arising as a result of relying on the data and information, regardless of the form of action, whether in contract, tort (including negligence), breach of statutory duty or otherwise.