



Capricorn Enterprise Regional Economic Update

28th April 2022
Rockhampton

Contents

1. Acknowledgment of country
2. Project Overview
3. COVID-19 Update
4. Project Activities – Recent
5. Project Activities – Look Ahead
6. Recent Site Activity
7. Ongoing Community and Stakeholder Engagement
8. Procurement & Supply



Acknowledgment of Country

We acknowledge and pay respect to the Darumbal peoples for it is upon their lands that we meet today. Their presence here in Rockhampton has been ongoing since before colonization. We thank them for their allowing us to meet and gather on their ceremonial lands.

Also the BKY group to allow us to work with them on their traditional people's country.

BARADA

- The Barada people follow from the descent line of Kitty Eaglehawk. She is the apical ancestor for Barada people.
- The Barada people look after the central area of the BKY claim.
- The Eaglehawk or Goodiethulla is the totem for the Barada people.

KABALBARA

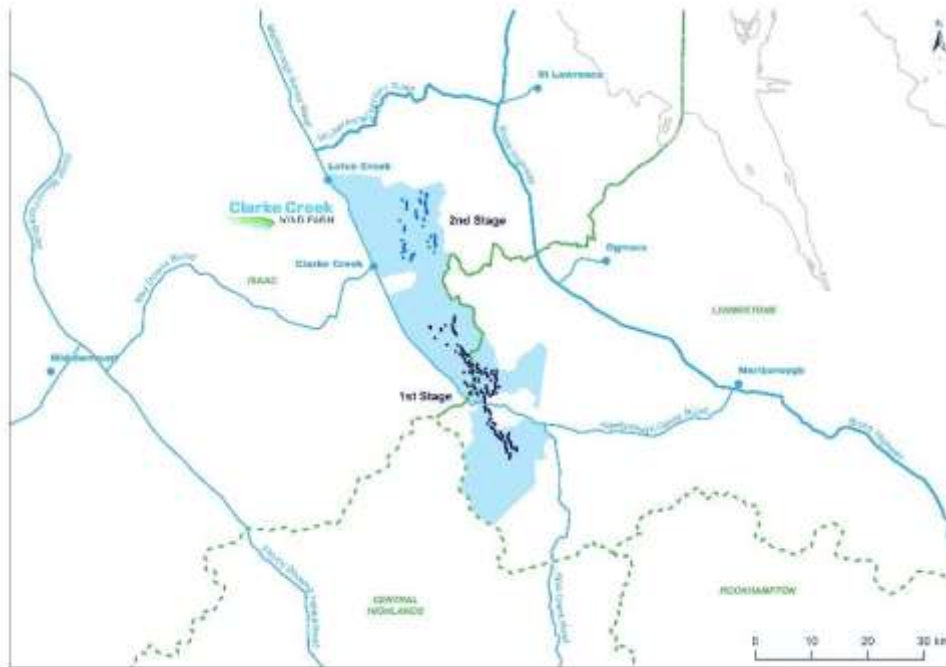
- The Kabalbara people represent the western area of the BKY claim.
- Their totem is the Carpet snake or Kabal.



YETIMARALA

- The Yetimarala people take care of country on the eastern side of the BKY claim area.
- The Yetimarala people follow the descent line of Yatton Boney.
- There are landmarks in the BKY area that carry the name of Yatton.
- The Yetimarala people also have the Eaglehawk or Goodiethulla as their totem.

Clarke Creek Wind Farm Overview



- Expected project size is:
 - Up to 195 turbines with output of up to 1,000MW;
 - 400MW solar; and
 - battery storage.
- Total project investment ~\$3.0 billion.
- Clarke Creek Energy Pty Ltd (CCEPL) has been acquired by Squadron Energy
- Squadron Energy is owned by Tattarang which is Andrew Forrest's private investment company.
- Windlab is 75% owned by Squadron Energy and will be overseeing construction of The Clarke Creek Wind Farm
- 1st Stage of the project:
 - 100 Goldwind turbines totaling 450MW
 - 346.5MW section supplying Stanwell Corporation under Power Purchase Agreement
 - Projected injection of over \$100 million into the local and regional economy during construction.

COVID-19 Update

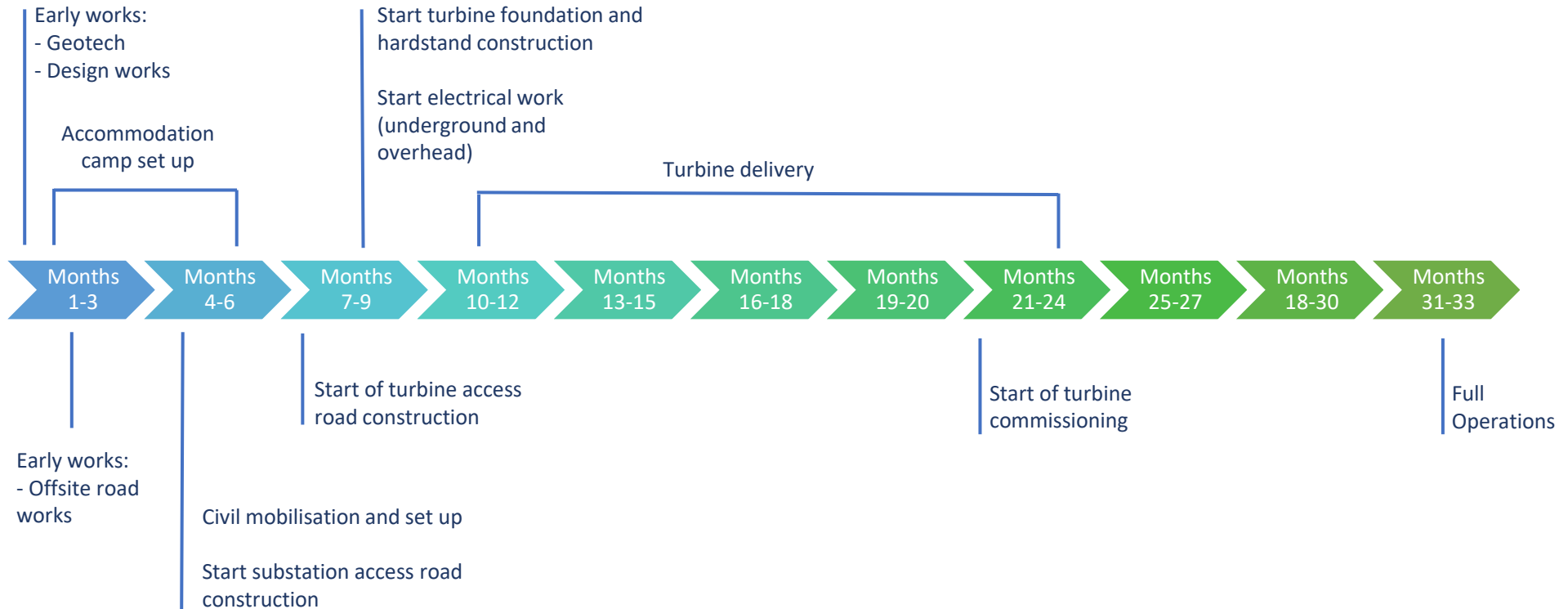
- Windlab continues to follow core principles in our response to CV-19:
 - Protect the safety and welfare of our staff, contractors and the communities in which we operate, particularly those in high risk categories.
 - Maintain productivity to meet business objectives and ensure continuity of business-critical activities within Federal and State Government directives.
 - Support and boost existing and new economic activity, particularly within regional communities close to our projects.
- Measures include:
 - Interstate and intrastate travel in line with state restrictions.
 - Appropriate testing prior to attendance at site or any public and community events
 - Close monitoring of changing requirements.

Project Activities – Recent

- All key stakeholders, Landholders, CCC, Councils, state & federal governments are aware of the new ownership
- Goldwind will continue to be involved: supplying and installing the turbines, and then with the operation and maintenance of the wind farm. Several key personnel are assisting to achieve a smooth transition.
- Grid connection – approval was granted at the end of 2021. Technical design is ongoing.
- Major contractors, Yurika (eBoP), Catcon (cBoP), Goldwind (TSI) and Siemens (Synchronous Condenser) have commenced their detailed design and are preparing to mobilise to site. All contractors are working collaboratively to ensure a successful project.
- The accommodation camp construction has commenced and various other works.
- Offsite road works and upgrades – working closely with DTMR and local councils.
 - DTMR has approved the work packages for site entrances, passing bays, and Marlborough-Sarina Road widening works.
 - Ports Application for modification works within Gladstone Ports is underway.
 - Collaboration with QPS, TMR, Gladstone Regional Council and Gladstone Port to optimise OSOM TMP.
 - TMP and TIA have been finished and issued to stakeholders
 - Planning Minor Change 3 (MCR3) approved to accommodate very minor layout changes.
 - Planning on the lifting of power lines on the OSOM route continuing.
 - Secondary approvals and documents were submitted ahead of the start of construction.
- Cultural Heritage survey work continuing with the BKY group.

Project Activities – Look Ahead for 1st Stage

Indicative timeline, may change



Recent Site Activity

- Various site inspections finalising scopes of work and familiarisations of the project area.
- Geotech drilling, surveying of areas, water bore for camp, geotech data collection for road design.
- Minor site maintenance including upkeep of existing access tracks & met mast maintenance.
- Aboriginal Cultural Heritage surveys (ongoing) - currently planning next program.
- Off site roads construction. Site entrances and pull over bays and office compound.
- Accommodation camp construction ready for full construction team.



Ongoing Community and Stakeholder Engagement

- Community Consultative Committee meetings
- Support the Marlborough State School with the repairs to the playground equipment.
- Supplied the Engel fridge for the Clarke Creek ICPA raffle.
- Meeting with councils and other stakeholders (Capricorn Enterprise, Advance Rockhampton, Chamber of Commerce & Industry Queensland, TAFE)
- Notification of new owner to immediate stakeholders
- On going planning for stakeholder engagement forums which will include face to face meetings with interested parties.



Procurement & Supply

- The BoP contractors will be individually managing their own employment and procurement supply lines for the project.
- **BoP Civil. Catcon** delivering approx. 100Km of onsite roads, MAS & buildings infrastructure, tower footings. Catcon are also the Principal Contractor for the project.
- **BoP Electrical. Yurika**, delivering underground and aerial power reticulation, three substations.
- **BoP Turbine Supply & Install.** Goldwind, delivering wind turbines, OSOM loads from Gladstone port to site, crange, commissioning and O&M of turbines.



Contact Us

- **Clarke Creek Wind Farm**

- 1800 974 882
- Info@clarkecreekwindandsolar.com.au

- **Catcon Civil BoP**

- Suppliers – CCWF@catcon.com.au use "*Clarke Creek WF Procurement*" in subject line
- Employment opportunity – hr@catcon.com.au use "*Clarke Creek WF Employment*" in subject line

- **Yurika Electrical BoP**

- Procurement – helloccwf@yurika.com.au
- Resourcing & Recruitment – hello@yurika.com.au
- General Project Information – helloccwf@yurika.com.au