



Clarke Creek

WIND FARM



LACOUR



GOLDWIND



2021 Major Projects Forum

28 October 2021

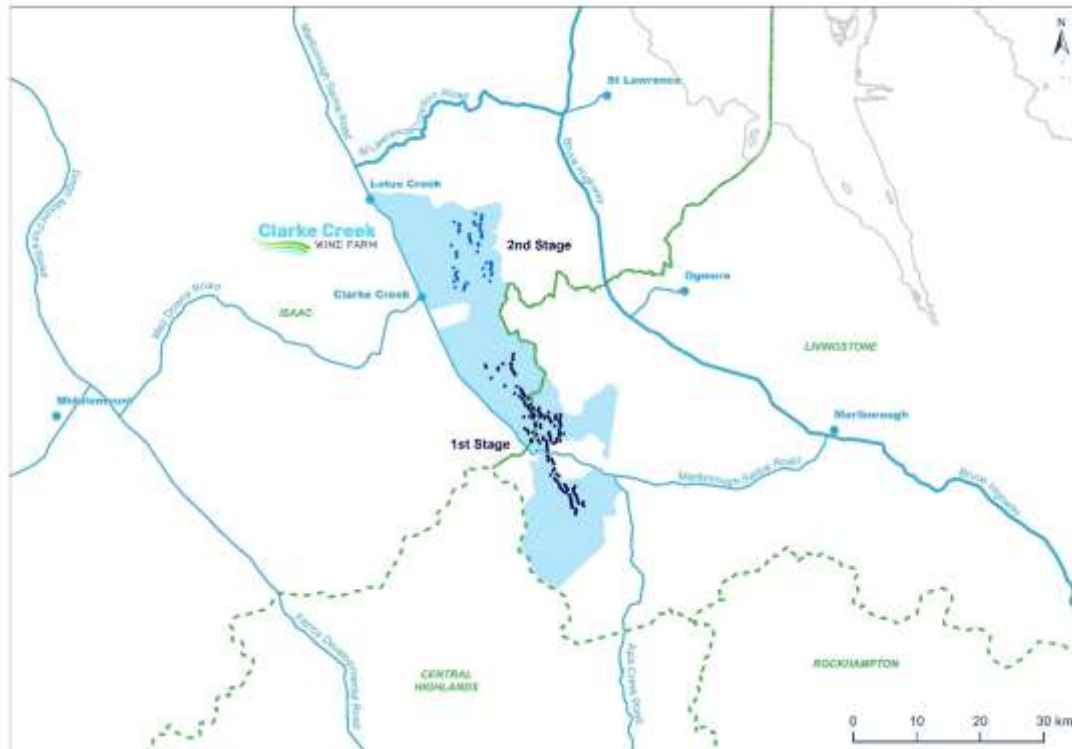
Project Director: Leigh Walters

Contents

1. Project Overview
2. Project Activities – Look Ahead
3. Project Structure – Delivery & Operations
4. Project Activities – Status
5. Recent site activity
6. Introduction to Main Contractors
7. Safety & Risk Management
8. Ongoing community and stakeholder engagement
9. Opportunities & Employment
10. Contact Details



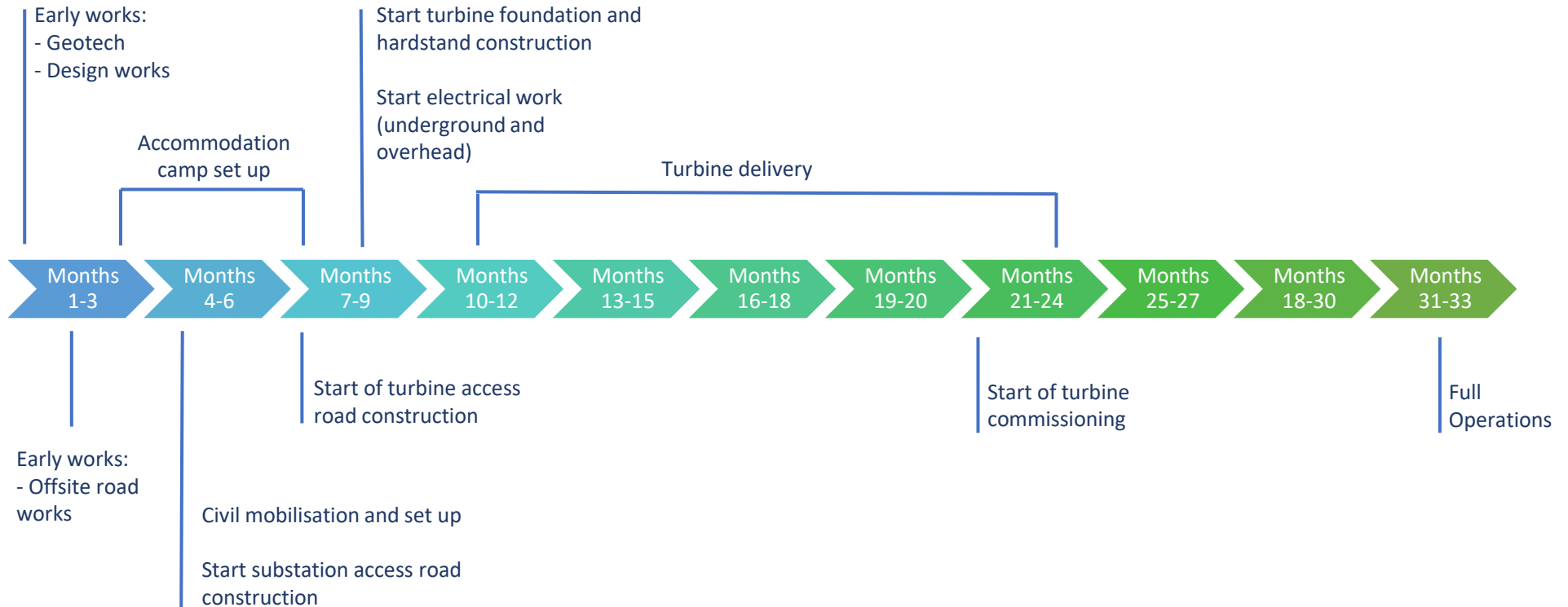
Clarke Creek Wind Farm Overview



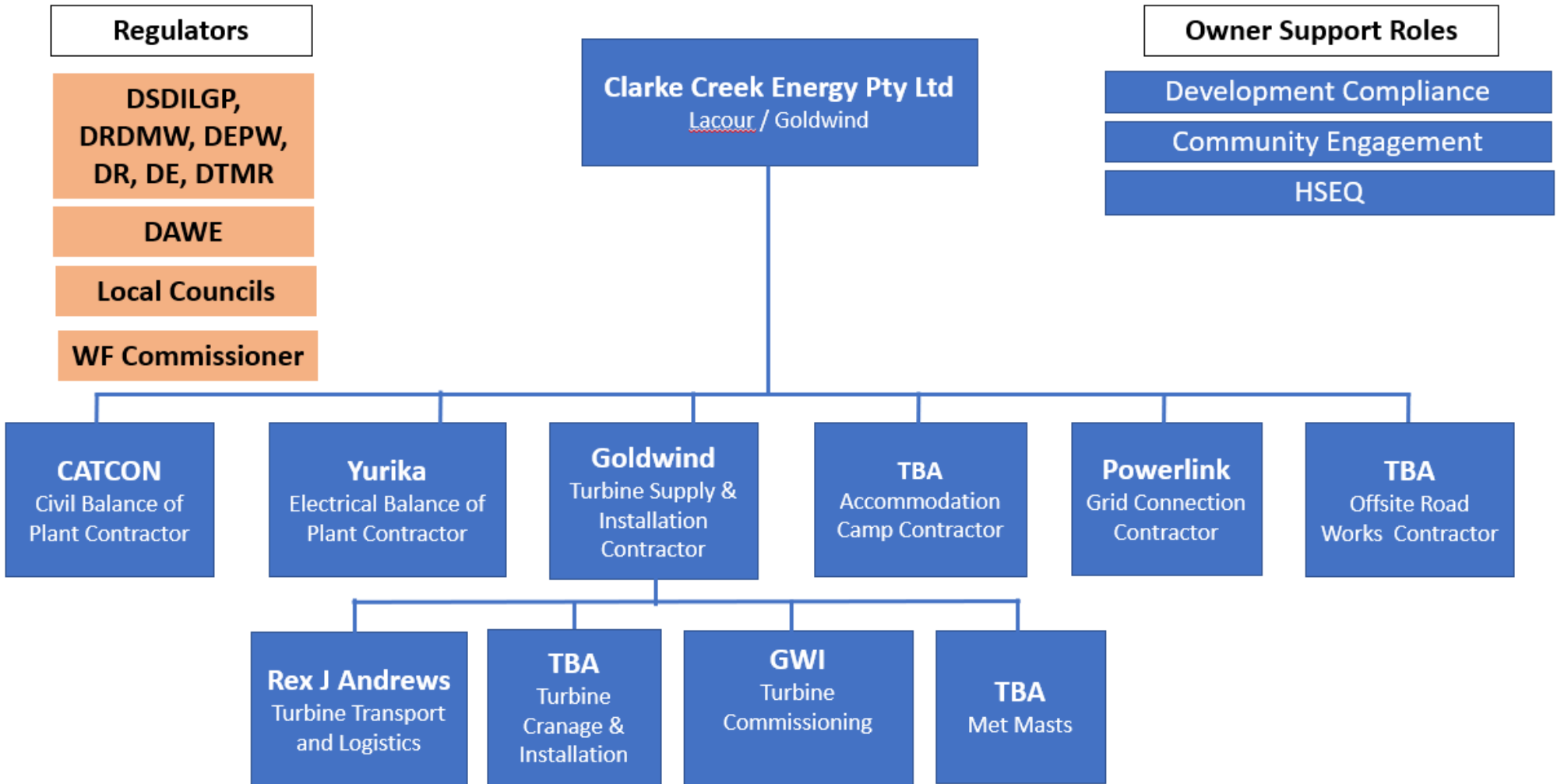
- Expected project size is:
 - Up to 195 turbines with output of approximately 800MW;
 - 400MW solar; and
 - battery storage.
- Total project investment ~\$1.5 billion.
- 1st Stage of the project:
 - 100-111 Goldwind turbines totaling 450-500MW
 - 346.5MW section supplying Stanwell Corporation under Power Purchase Agreement
- Working to prepare the project for construction.
- Aim to start early construction works, followed by full wind farm construction, in late 2021.
- Estimated 350 jobs during construction period and 25 full time jobs during operations (25 years).

Project Activities – Look Ahead for 1st Stage

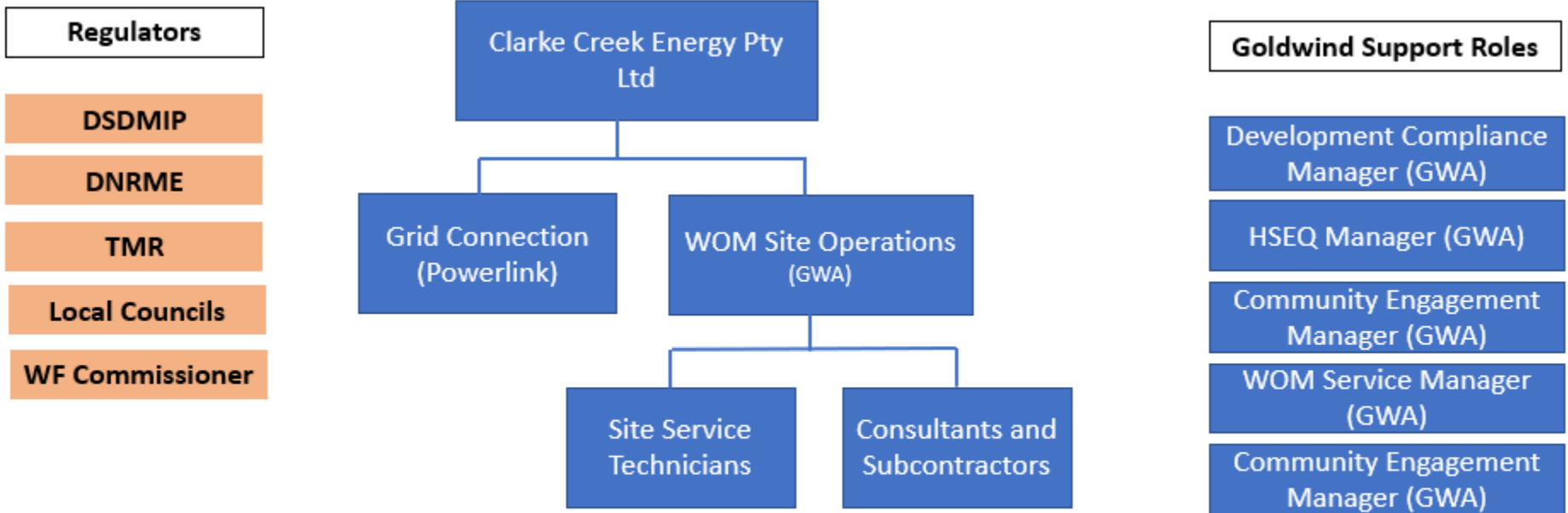
Indicative timeline, may change



Project Delivery Structure



Project Operational Structure



CCWF Operations – Organisation Chart

Project Status

- 1st Stage (100-111 turbines, 450-500MW, southern section of the project)
 - The equity process is nearing completion. Goldwind will continue to be involved through a significant contribution towards construction, delivery and supply of turbines, and operation and maintenance of the wind farm.
 - Grid connection – technical planning and agreements progressing.
 - Offsite road works and upgrades – working closely with DTMR and local councils to finalise documents. DTMR has approved the work packages for site entrances, passing bays, and Marlborough-Sarina Road widening works.
 - Ports Application for modification works within Gladstone Ports is underway.
 - Collaboration with QPS, TMR, Gladstone Regional Council and Gladstone Port to optimise OSOM TMP.
 - Successful Industry Briefing Events hosted by the Department of State Development, Infrastructure, Local Government and Planning with presentations from Catcon and Yurika.
 - Preparing various plans, secondary approvals and documents necessary before start of construction.
- Continued preparation for 2nd Stage of the project.

CCWF Recent Site Activity

- Various site visits to assist with equity process, design optimisation and contract tendering.
- Geotech drilling at one of the substation locations by Yurika.
- Minor site maintenance including upkeep of existing access tracks, met mast maintenance.
- Aboriginal Cultural Heritage surveys (ongoing) - currently planning next program.



Goldwind Queensland Construction Pty Ltd

Goldwind Australia

Established in 2009

- 180 Employees
- 560MW wind + 30MW solar under operation
- 800MW wind under construction
- >1,000MW under late stage development
- Local staff, Sydney & Melbourne Head Offices
- Project staff deployed locally in regional QLD, NSW, VIC and TAS.
- Strong relationship with key subcontractors
- In-house planning experts
- Advanced grid solutions

Goldwind Key Projects

Operating

Mortons Lane Wind Farm **Victoria**

GW82 1.5MW
19.5MW Rated Capacity



Gullen Range Wind Farm **New South Wales**

GW82 1.5MW + GW100 2.5MW
165.5MW Rated Capacity



Gullen Range Solar Farm **New South Wales**

Gullen Range Wind Farm
grid connection 10MW
22,000MWh/yr Capacity



White Rock Wind Farm **New South Wales**

GW121 2.5MW
175MW Rated Capacity



Goldwind Key Projects

Operating Cont.

White Rock Solar Farm **New South Wales**

White Rock Wind Farm
grid connection 20MW
44,000MWh/yr Capacity

Moorabool Wind Farm **Victoria**

GW136 3.0-3.4 MW
321MW Rated Capacity

Cattle Hill Wind Farm **Tasmania**

GW140 3.0-3.4 MW
148MW Rated Capacity

Biala Wind Farm **NSW**

GW140 3.57 MW
110MW Rated Capacity



Goldwind Key Projects Under Construction

Stockyard Hill Wind Farm
Victoria – under grid commissioning
GW140 3.0-3.6 MW
530MW Rated Capacity



Esperance Wind Farm
Western Australia
GW155 4.5 MW
9MW Rated Capacity



Safety, Environment & Community Risk Management

- Work Health & Safety Act (QLD) – Informing Office of Industrial Relations.
- CATCON nominated Principal Contractor for Construction Works.
- QBCC compliance.
- Goldwind Australia continues to follow core no harm principles in our activities including response to COVID-19:
 - Protect the safety and welfare of our staff, contractors and the communities in which we operate, particularly those in high risk categories.
 - Maintain productivity to meet business objectives and ensure continuity of business-critical activities within Federal and State Government directives.
 - Support and boost existing and new economic activity, particularly within regional communities close to our projects.

Ongoing Community and Stakeholder Engagement

- Information Centre open. Continued enquiries through 1800 974 882 and info@clarkecreekwindandsolar.com.au.
- RACQ Capricorn Helicopter Rescue Service Community Open Day was postponed. Project is part of the Rescue 300 Club.
- Sponsored the Lions Club golf day fundraiser.
- Supported and attended the Clarke Creek State School 50th Anniversary celebrations.
- Stall at Resource, Civil Construction, Engineering and Renewables Career Expo 27th Oct.
- Meeting with councils and other stakeholders (Capricorn Enterprise, Advance Rockhampton, Chamber of Commerce & Industry Queensland, TAFE)
- ICN Gateway continues to be open for local businesses to register interest.



Opportunities and Employment

- **Supporting nominated Main Contractors** – Geotech & Survey, Civil and Earthworks, Electrical Services, Misc crange and transports, Traffic Control and Transport Escort, Protective Coatings, Fencing, Weed-spray, Road maintenance and water cartage, Landscaping, IT Services, Environmental & waste services, Plant hire, Training (VOC, W@H, Plant operations, Occupational licencing, etc.), HV Test & Operations;
- **Consulting** – Environmental, Topographical, Geotech / Structural /Civil, Acoustic modeling & reporting, Commercial & administration, Wildlife management;
- **Project support** – Employment providers, Courier & delivery services, Cleaning & Waste, Potable water, Food services, Printing & Office supplies, Furniture, Amenities, Plumbing & Drainage, Photography / Videos, Inspections, Accommodation and People transport;

Contact Details

Contact Us

Phone: 1800 974 882

Email: info@clarkecreekwindandsolar.com.au

Post: Level 25, Tower 1, 100 Barangaroo Avenue,
Barangaroo Sydney NSW 2000.

Local Information Centre: 18 Railway Street,
Marlborough. Opening hours Fridays 9am - 1pm or by
appointment.

