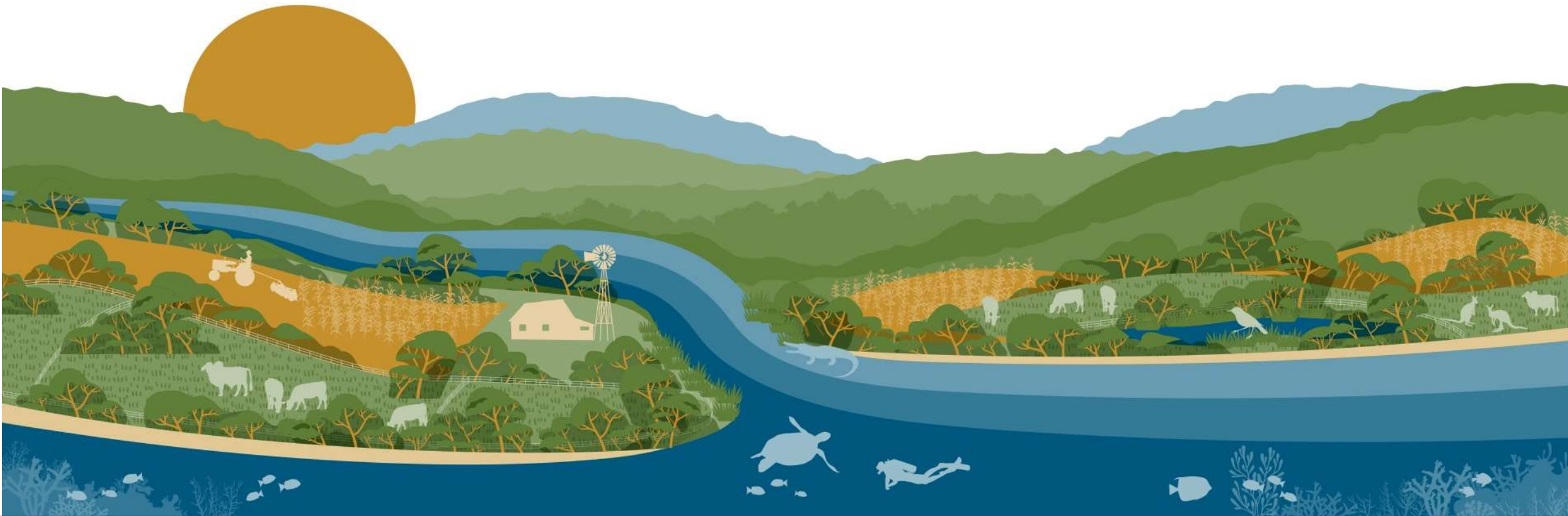




A Roadmap for a Sustainable CQ



PEOPLE. ENVIRONMENT. FUTURE.

PEOPLE ENVIRONMENT FUTURE

Lead

regional connection
and collaboration

Leverage

knowledge, science
and partnerships

Create

value through people
and solutions

Queensland's highest commodity region, the Fitzroy, is a vast and complex landscape.

Abundant and diverse in productive industry, this region is an economic powerhouse, contributing to livelihoods across the country.



3.2 million head of cattle (MLA, June 2018)



79% of the land in the region is managed by farmers and graziers (Department of Agriculture, 2020)



5178 native species thrive in our region (Department of Environment and Science, May 2021)



224 rare and threatened species (Department of Environment and Science, May 2021)



8,534 wetlands, that's 1/3 of QLD wetlands (Department of Environment and Science, May 2021)



373 marine islands (State of Queensland (Department of Resources, 2014)



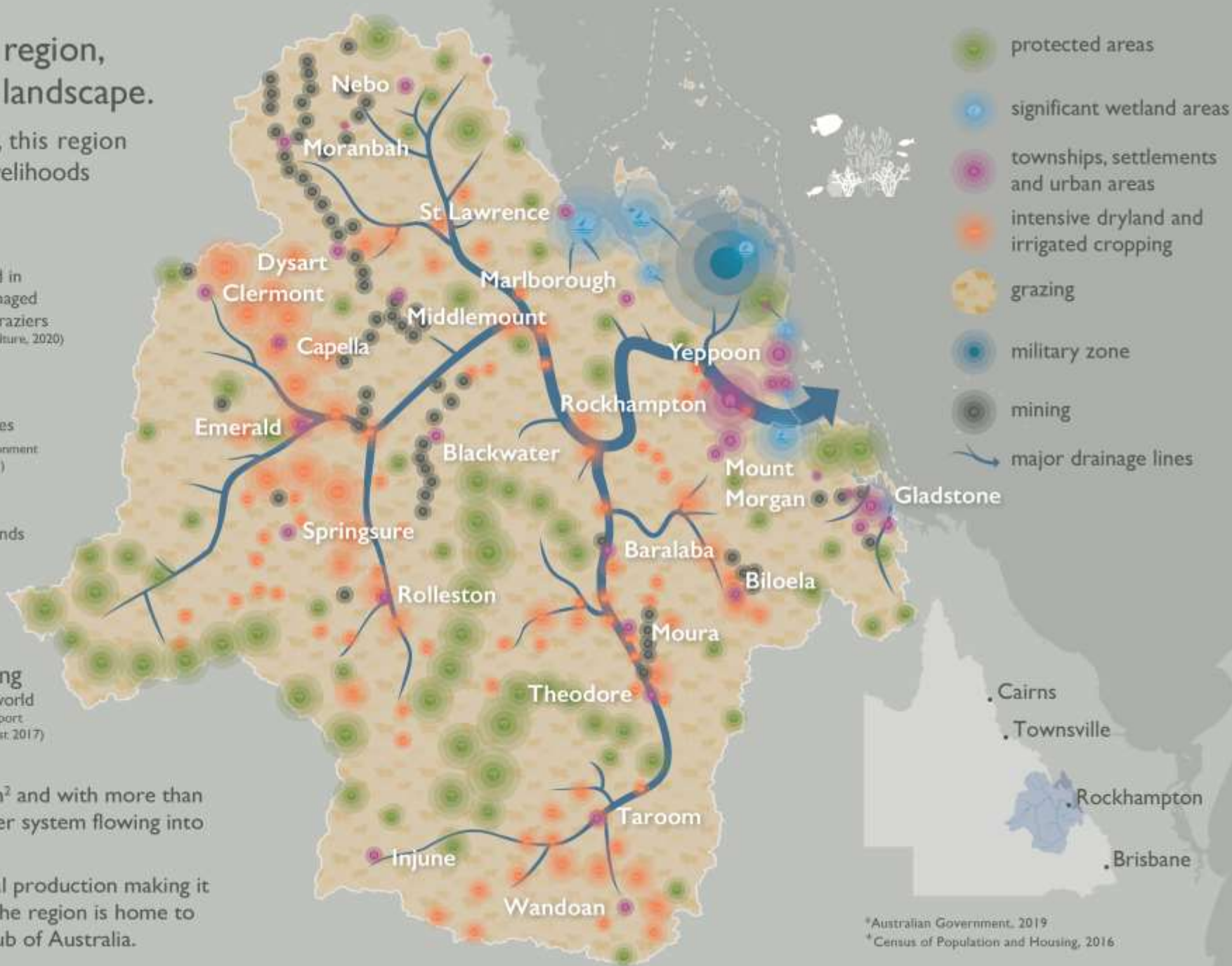
77% of QLD active coal mines (State of Queensland (Department of Resources, 2020)



Home to one of the largest coal exporting terminals in the world (Department of Transport and Main Roads, August 2017)

The Fitzroy region has a footprint of over 156,000km² and with more than 20,000km of waterways, the Fitzroy is the largest river system flowing into the waters of the iconic Great Barrier Reef.

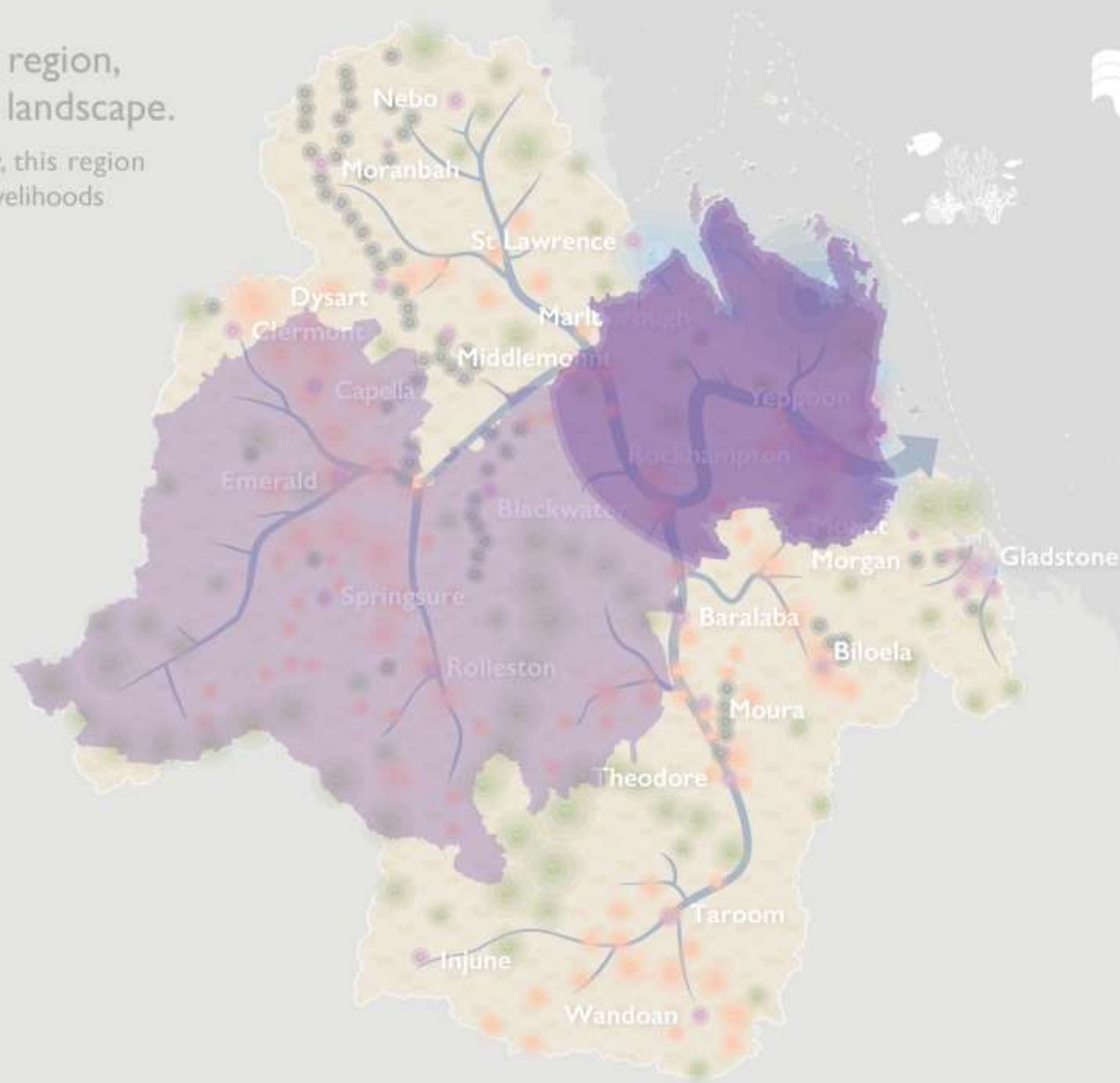
Almost 80% of the Fitzroy region is under agricultural production making it the largest cattle producing region in the country*. The region is home to over 235,000* people and is the mineral resources hub of Australia.



Queensland's highest commodity region,
the Fitzroy, is a vast and complex landscape.

Abundant and diverse in productive industry, this region
is an economic powerhouse, contributing to livelihoods
across the country.

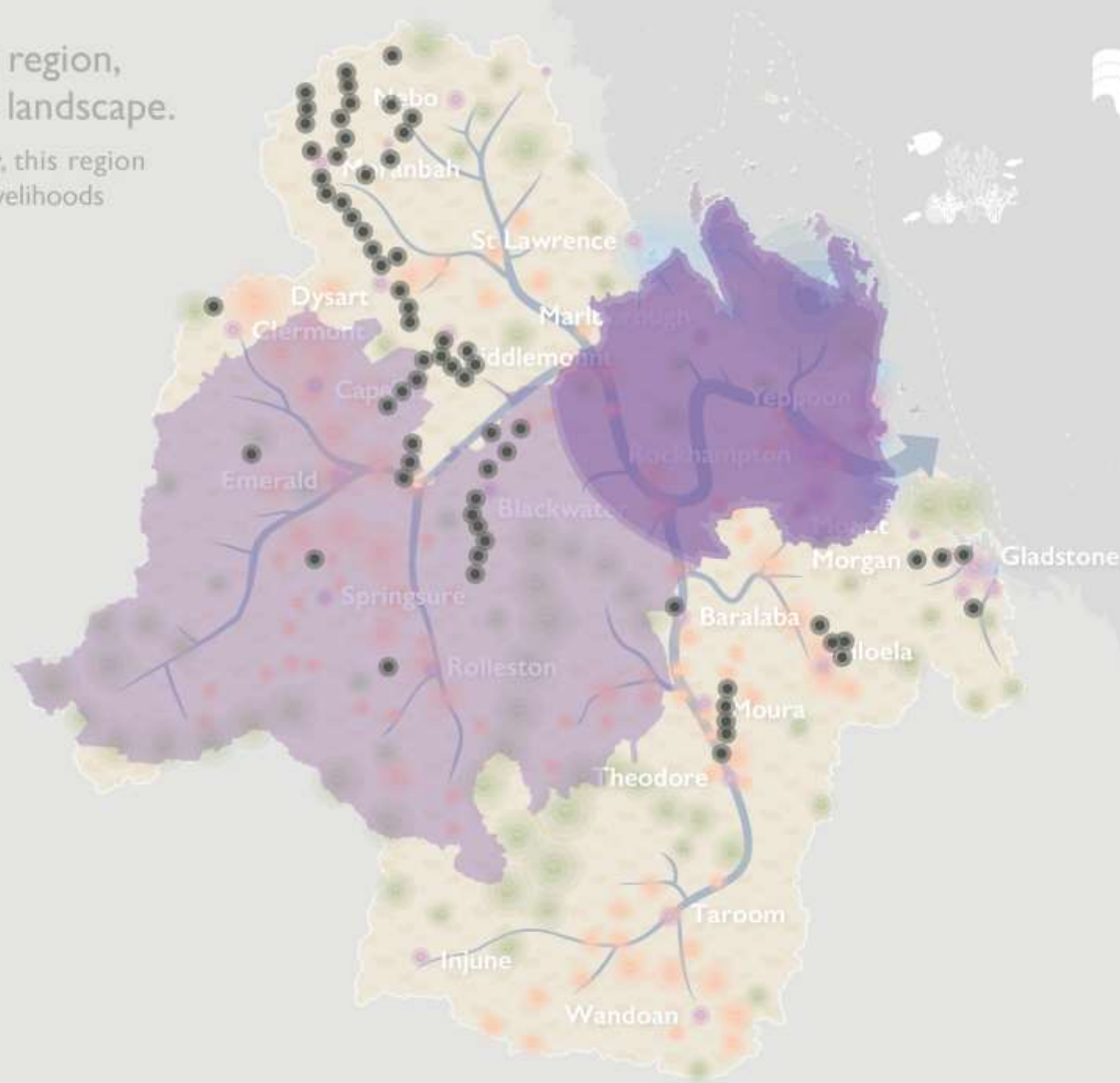
 **Capricorn Enterprise**



Queensland's highest commodity region,
the Fitzroy, is a vast and complex landscape.

Abundant and diverse in productive industry, this region
is an economic powerhouse, contributing to livelihoods
across the country.

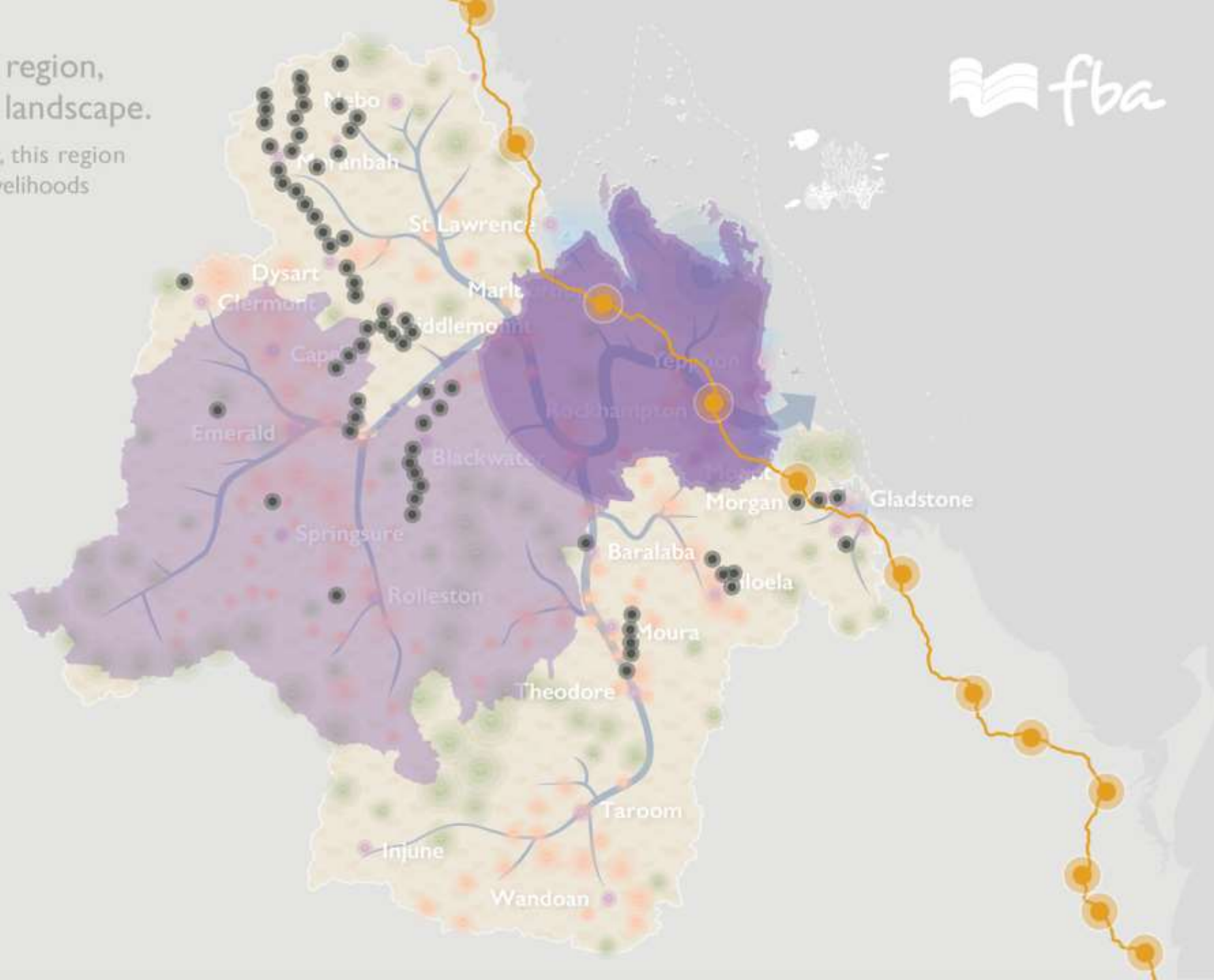
- Capricorn Enterprise
- Queensland Resources Council



Queensland's highest commodity region,
the Fitzroy, is a vast and complex landscape.

Abundant and diverse in productive industry, this region
is an economic powerhouse, contributing to livelihoods
across the country.

-  Capricorn Enterprise
-  Queensland Resources Council
-  Yurika
Part of Energy Queensland



Queensland's highest commodity region, the Fitzroy, is a vast and complex landscape.


Abundant and diverse in productive industry, this region is an economic powerhouse, contributing to livelihoods across the country.

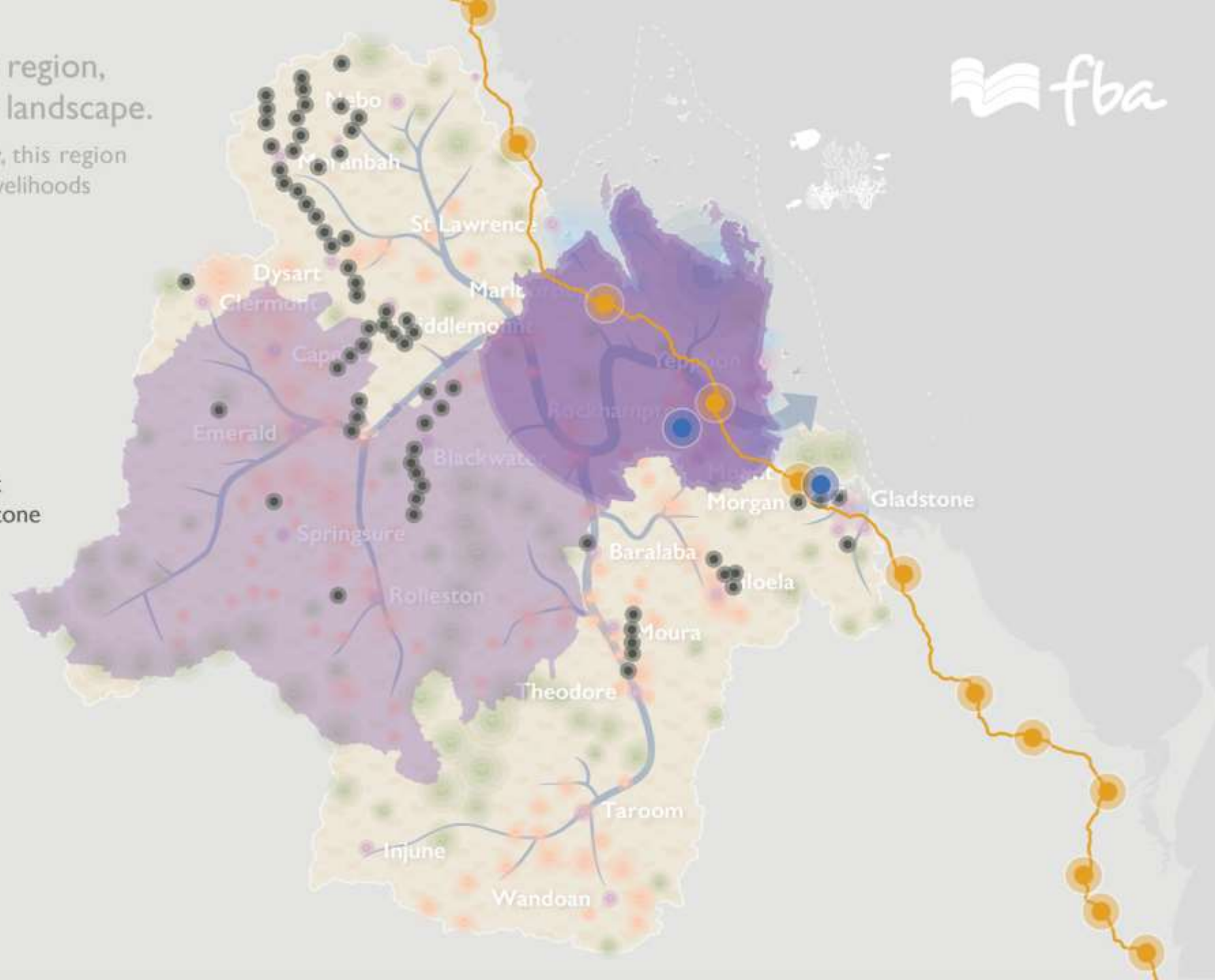


 **Capricorn Enterprise**

 **Queensland Resources Council**

 **Yurika**
Part of Energy Queensland

 **Stanwell Corp**
Stanwell power station hydrogen project
Renewable hydrogen project near Gladstone




Queensland's highest commodity region, the Fitzroy, is a vast and complex landscape.


Abundant and diverse in productive industry, this region is an economic powerhouse, contributing to livelihoods across the country.



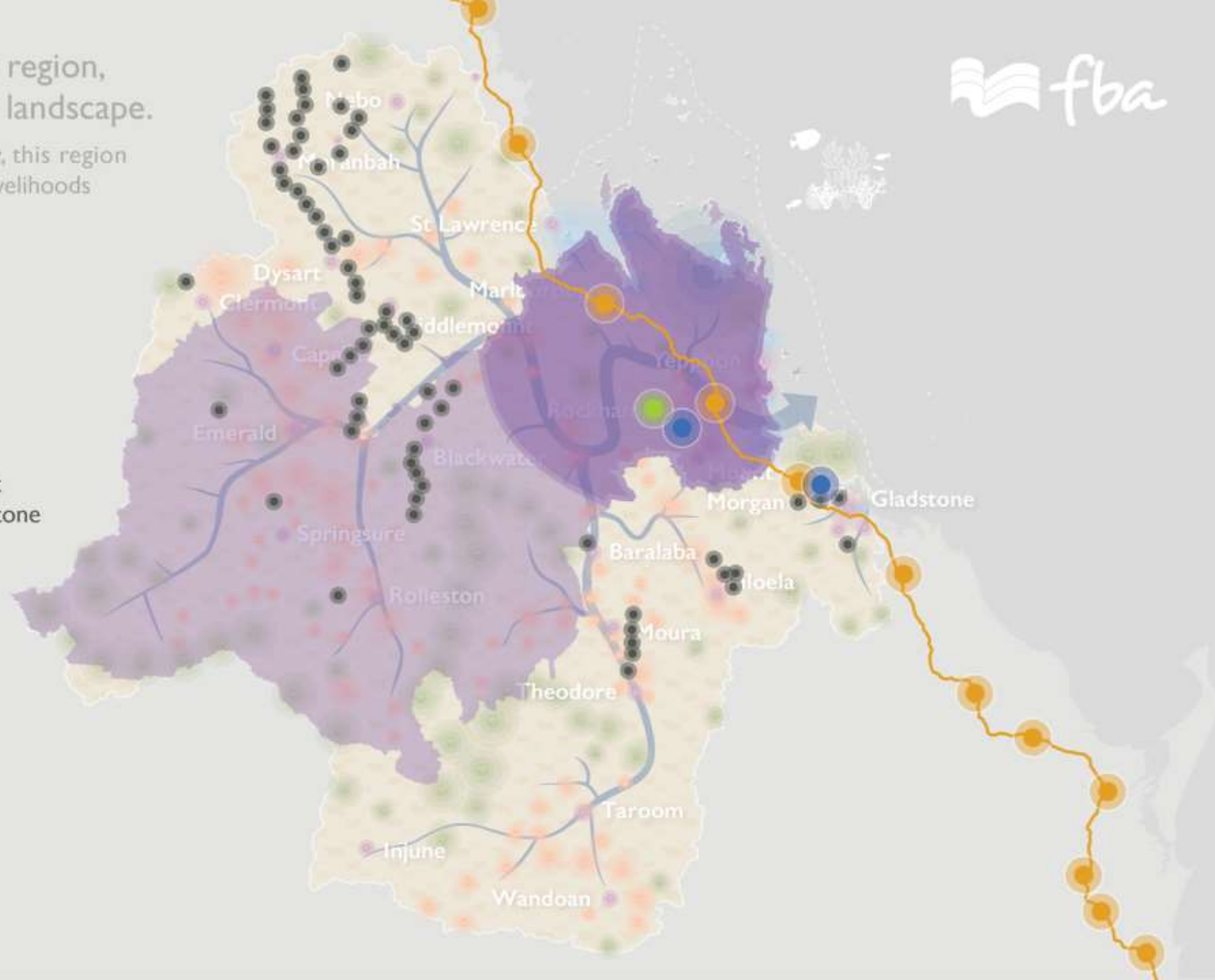
 **Capricorn Enterprise**

 **Queensland Resources Council**

 **Yurika**
Part of Energy Queensland

 **Stanwell Corp**
Stanwell power station hydrogen project
Renewable hydrogen project near Gladstone

 **Energy Estate**
Moah Creek project




Queensland's highest commodity region, the Fitzroy, is a vast and complex landscape.


Abundant and diverse in productive industry, this region is an economic powerhouse, contributing to livelihoods across the country.




 **Capricorn Enterprise**

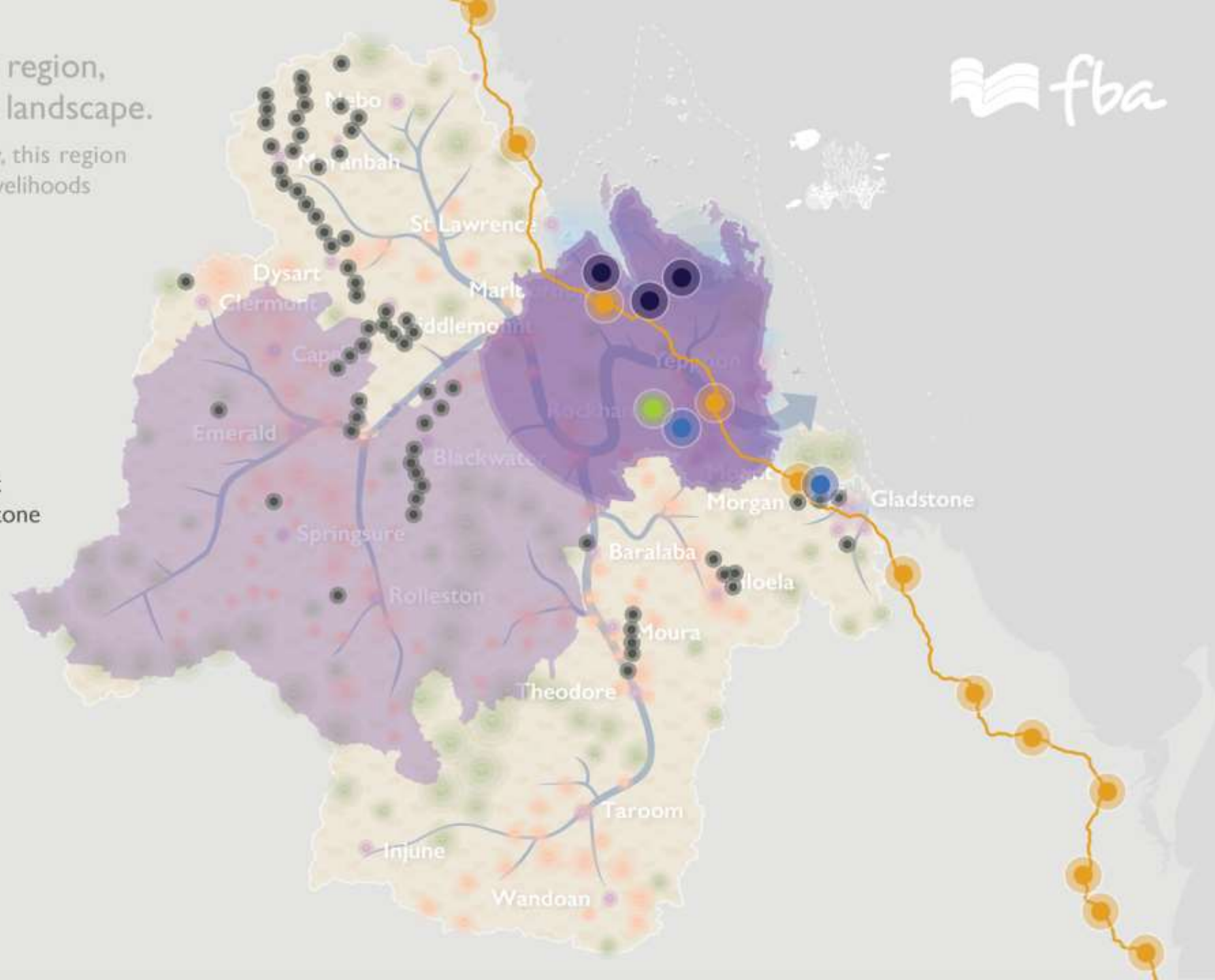
 **Queensland Resources Council**

 **Yurika**
Part of Energy Queensland

 **Stanwell Corp**
Stanwell power station hydrogen project
Renewable hydrogen project near Gladstone

 **Energy Estate**
Moah Creek project

 **ASMTI**




Queensland's highest commodity region, the Fitzroy, is a vast and complex landscape.


Abundant and diverse in productive industry, this region is an economic powerhouse, contributing to livelihoods across the country.



 Capricorn Enterprise

 Queensland Resources Council

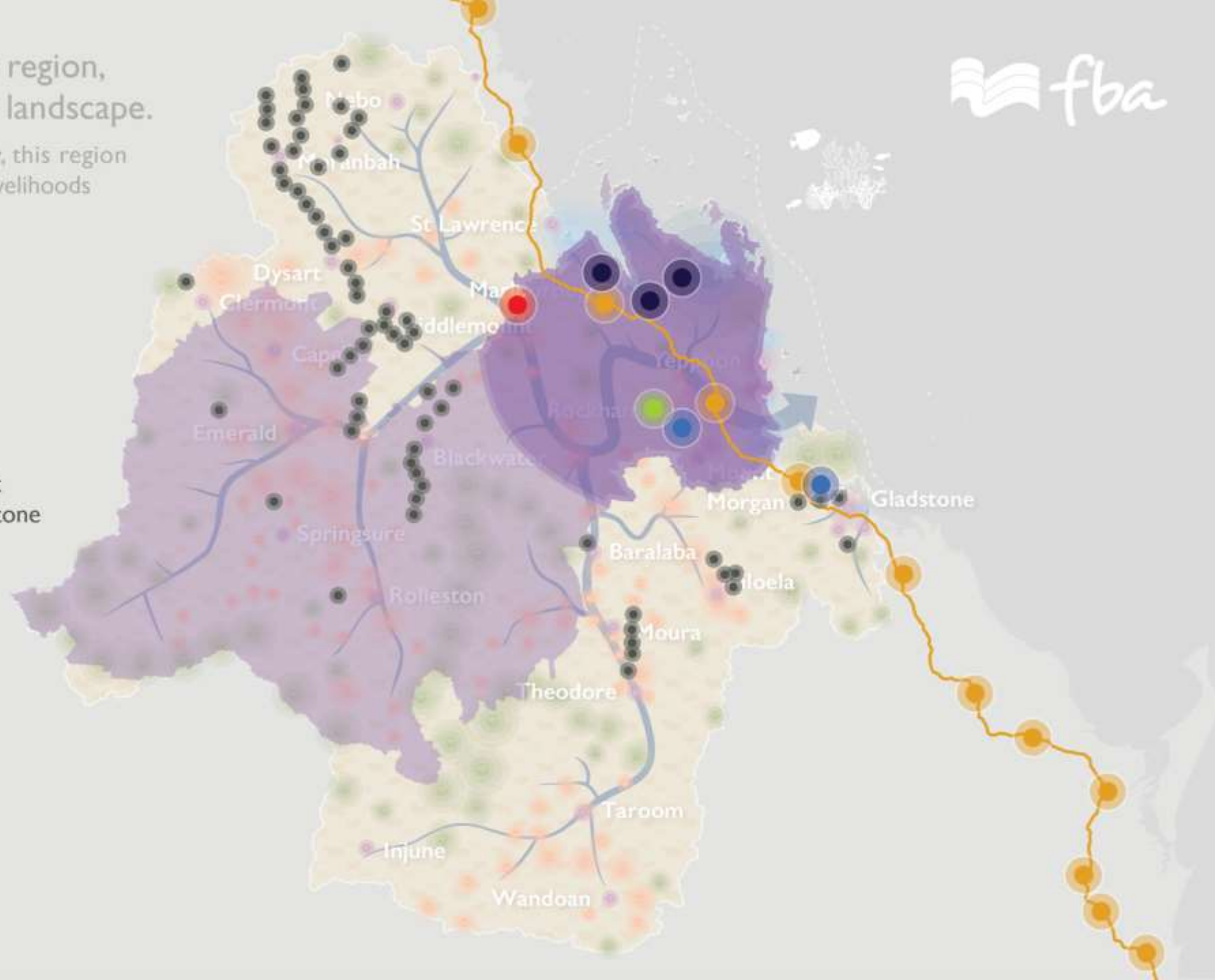
 Yurika
Part of Energy Queensland

 Stanwell Corp
Stanwell power station hydrogen project
Renewable hydrogen project near Gladstone

 Energy Estate
Moah Creek project

 ASMTI

 Goldwind Australia
Clarke Creek project

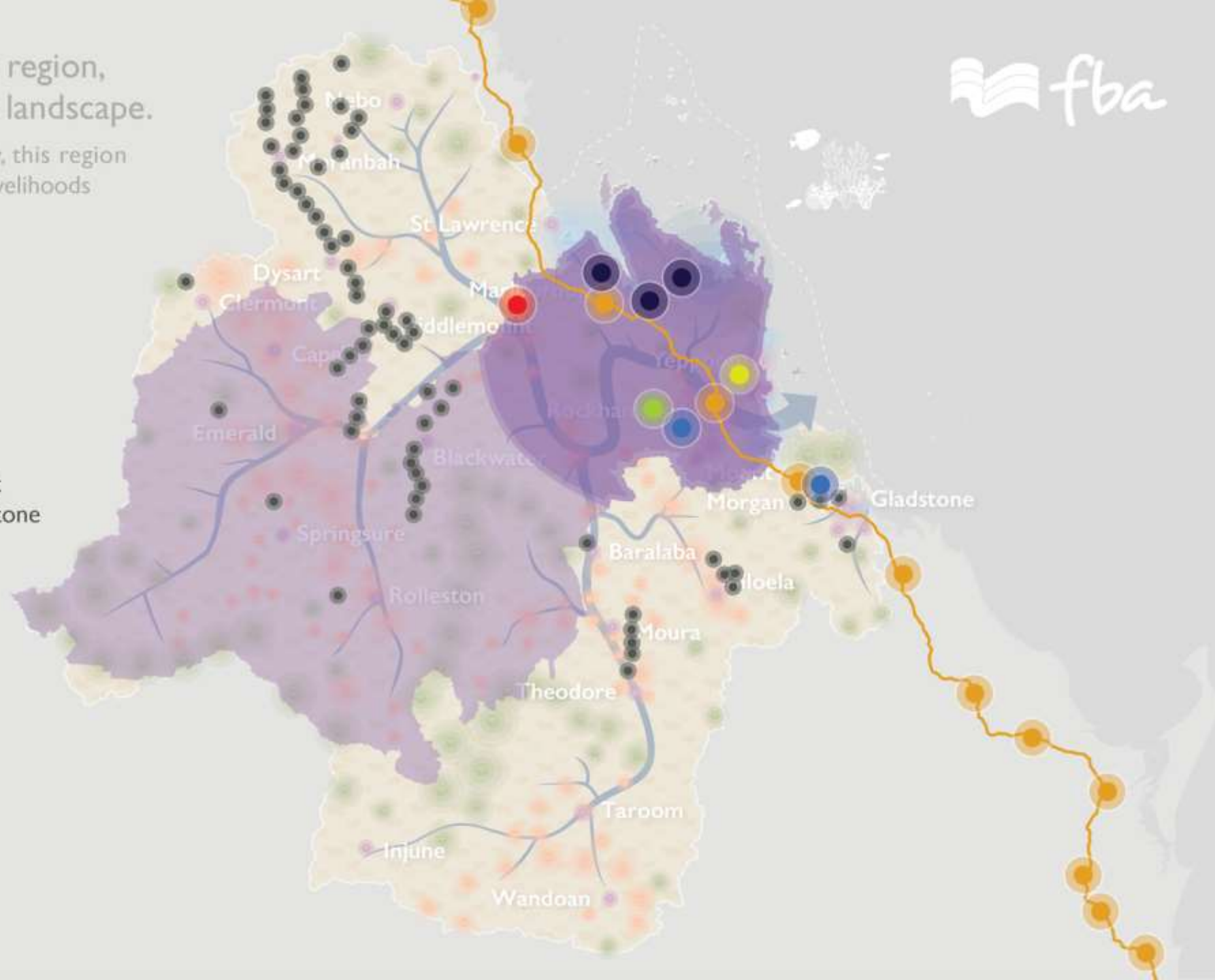


Queensland's highest commodity region, the Fitzroy, is a vast and complex landscape.

Abundant and diverse in productive industry, this region is an economic powerhouse, contributing to livelihoods across the country.



-  **Capricorn Enterprise**
-  **Queensland Resources Council**
-  **Yurika**
Part of Energy Queensland
-  **Stanwell Corp**
Stanwell power station hydrogen project
Renewable hydrogen project near Gladstone
-  **Energy Estate**
Moah Creek project
-  **ASMTI**
-  **Goldwind Australia**
Clarke Creek project
-  **Surf Lakes**




Queensland's highest commodity region, the Fitzroy, is a vast and complex landscape.


Abundant and diverse in productive industry, this region is an economic powerhouse, contributing to livelihoods across the country.



 Capricorn Enterprise

 Queensland Resources Council

 Yurika
Part of Energy Queensland

 Stanwell Corp
Stanwell power station hydrogen project
Renewable hydrogen project near Gladstone

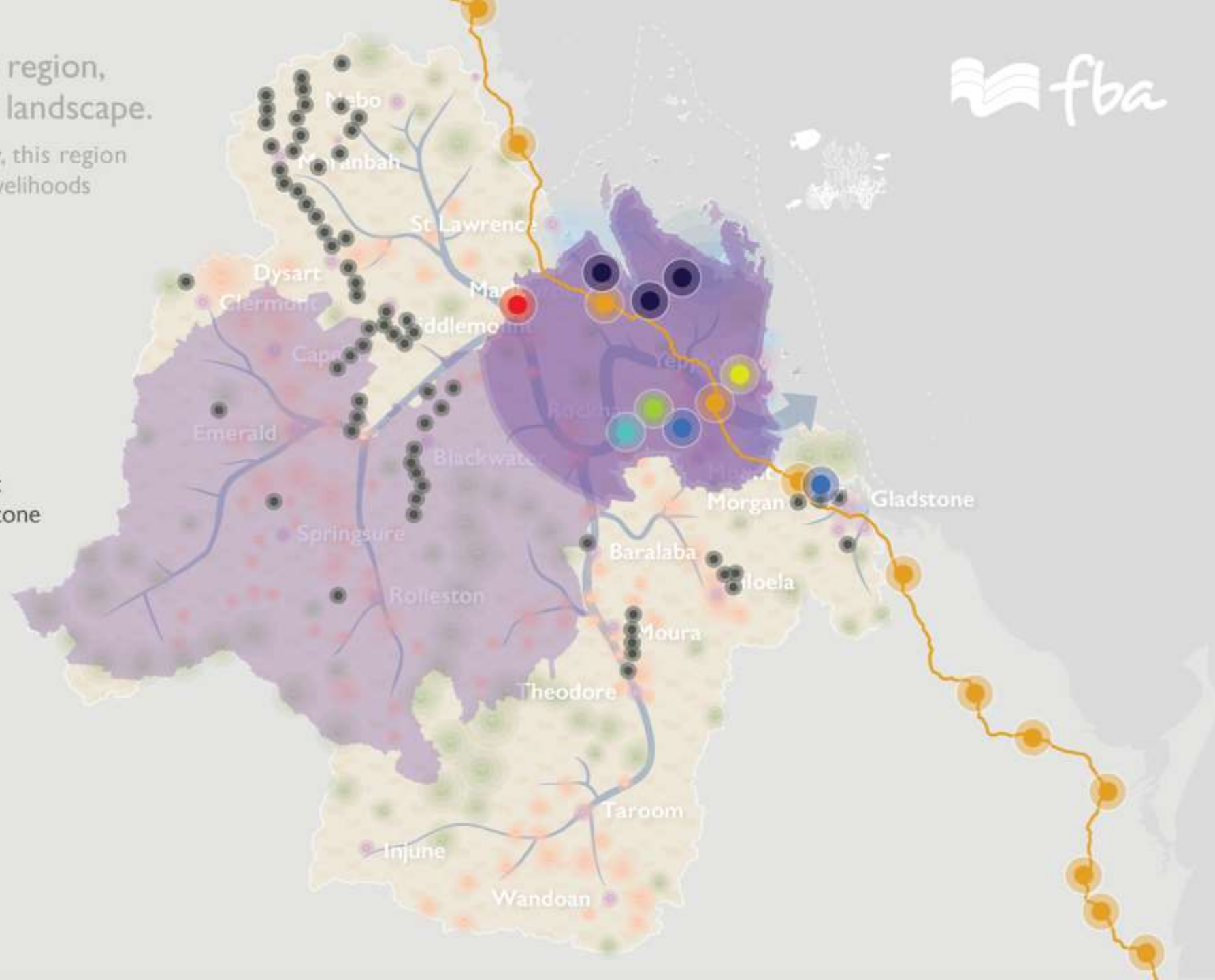
 Energy Estate
Moah Creek project

 ASMTI

 Goldwind Australia
Clarke Creek project

 Surf Lakes

 SunWater
Rookwood Weir



Queensland's highest commodity region, the Fitzroy, is a vast and complex landscape.

Abundant and diverse in productive industry, this region is an economic powerhouse, contributing to livelihoods across the country.



Capricorn Enterprise
Queensland Resources Council

Yurika
Part of Energy Queensland

Stanwell Corp
Stanwell power station hydrogen project
Renewable hydrogen project near Gladstone

Energy Estate
Moah Creek project

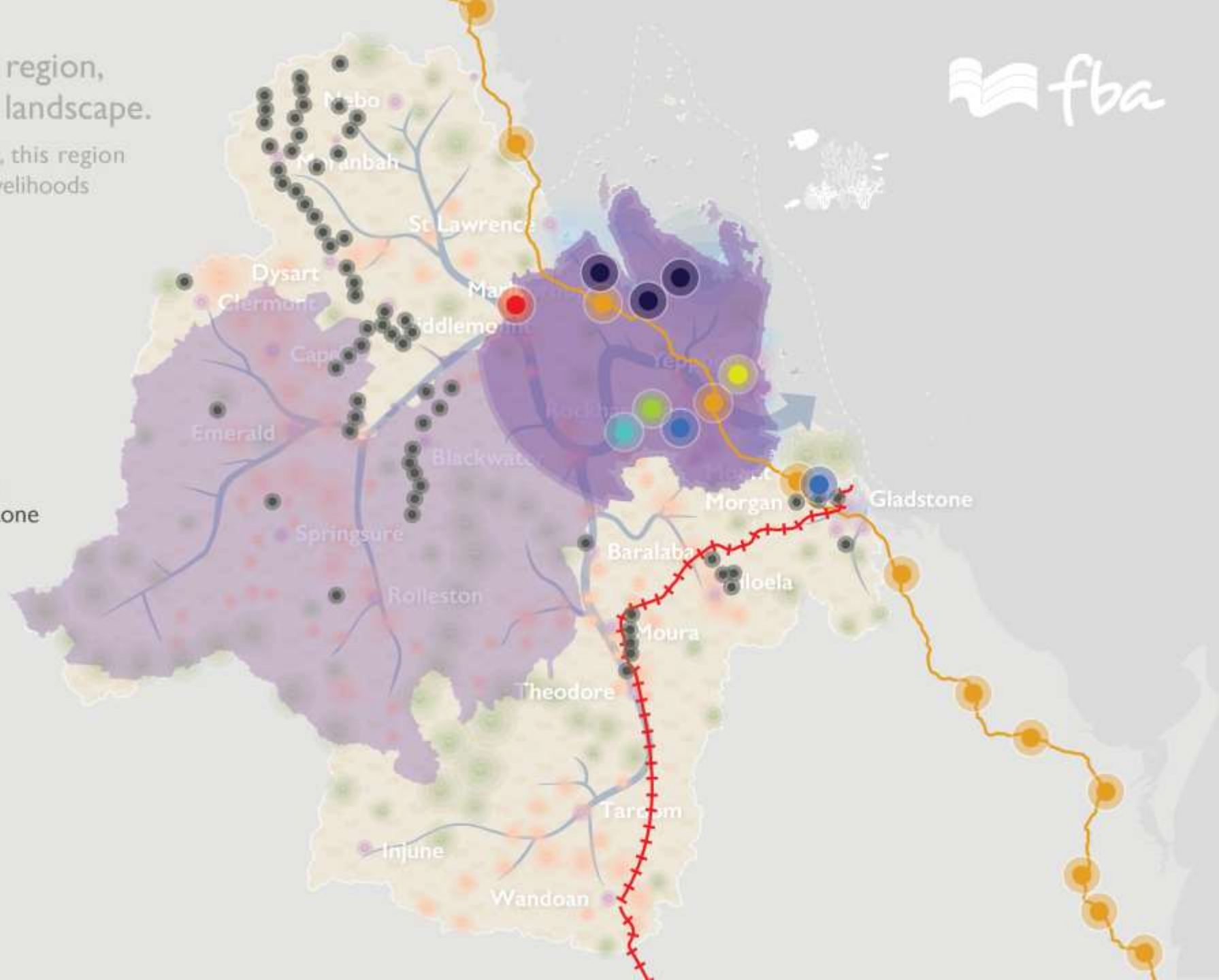
ASMTI

Goldwind Australia
Clarke Creek project

Surf Lakes

SunWater
Rookwood Weir

InterPort Global
Toowoomba to Gladstone Inland Rail





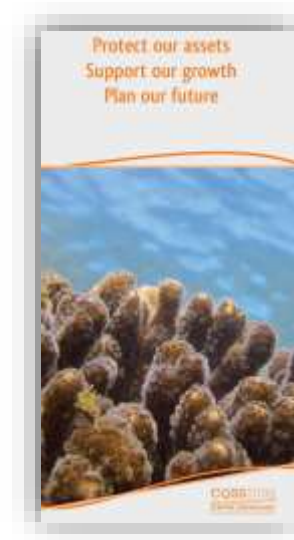
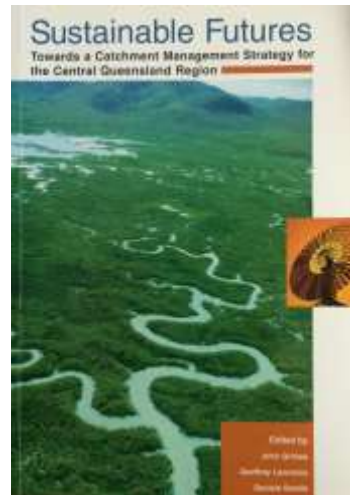
CQSS:2030

Our region's roadmap to a sustainable future



Beginnings can be traced back to the 1970s...

Community concern and coordinated action leads to political responses and the rise of Landcare.



Pre-
1970s

70s and
80s

1998

2004

2014

2021

Draws together the best available science, community insights and globally priorities

Global priorities



Places and species of international significance



National priorities



State priorities



Local priorities

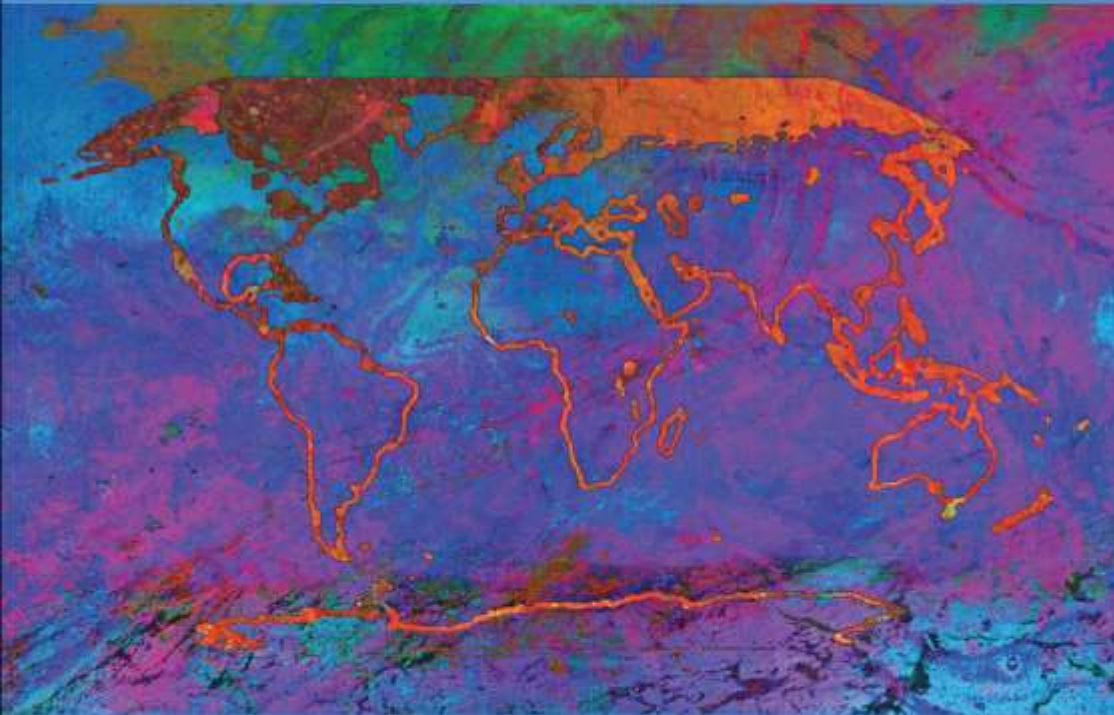




Climate Change 2021

The Physical Science Basis

Summary for Policymakers



“our planet is warming due to human activity”

As a result, our local and global weather patterns are changing...

Threatening our coastlines, communities, industries and natural assets.

BUT... there is a lot we can do.



The work of FBA...

Biodiversity and WQ Offsets

Land management practices adoption

Species and habitat protection

Community participation

Monitoring and reporting

Streambank stabilisation

6 natural assets 2 key drivers





Site 7 – 2017



Site 7 – 2019



Site 8 – Sept



Site 8 – Sept



FBA acknowledges the First Nations of the lands and waters within the Fitzroy region where we learn and live, and pay our respects to them, their cultures and Elders past, present and emerging.



fba.org.au