

# I-PG GROUP

I-PG (AUST) Pty limited

I-PGH Consolidated Holdings Pty Limited

I-PG T2G Rail Corp Pty Limited

Intercontinental Direct Line Pty Limited

Australian Transport Limited

I-PG Energy H2 Pty Ltd

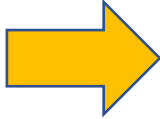
**John Abbott AM**

Chairman – Inter-Port Global Consolidated Holdings Pty Ltd

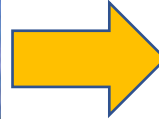
GEA Conference , October 2021



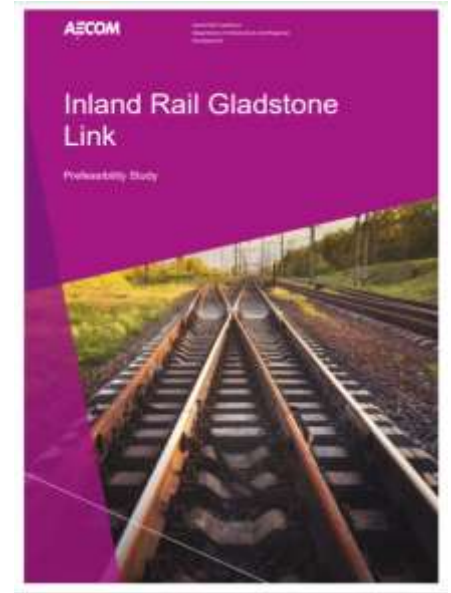
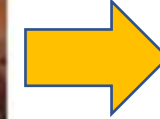
James Hogan MP  
1898 Transcontinental  
rail line terminating in  
Gladstone



**EVERALD COMPTON AO**  
1996  
*Melbourne to Gladstone*



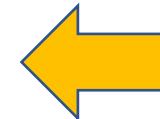
2015



2017



TOOWOOMBA TO  
GLADSTONE (T2G)  
INLAND RAIL  
ECONOMIC ANALYSIS  
CENTRAL QUEENSLAND REGIONAL ORGANISATION OF COUNCILS  
FEBRUARY 2017



The Senate

Rural and Regional Affairs and  
Transport References Committee

Inland Rail: derailed from the start

2021

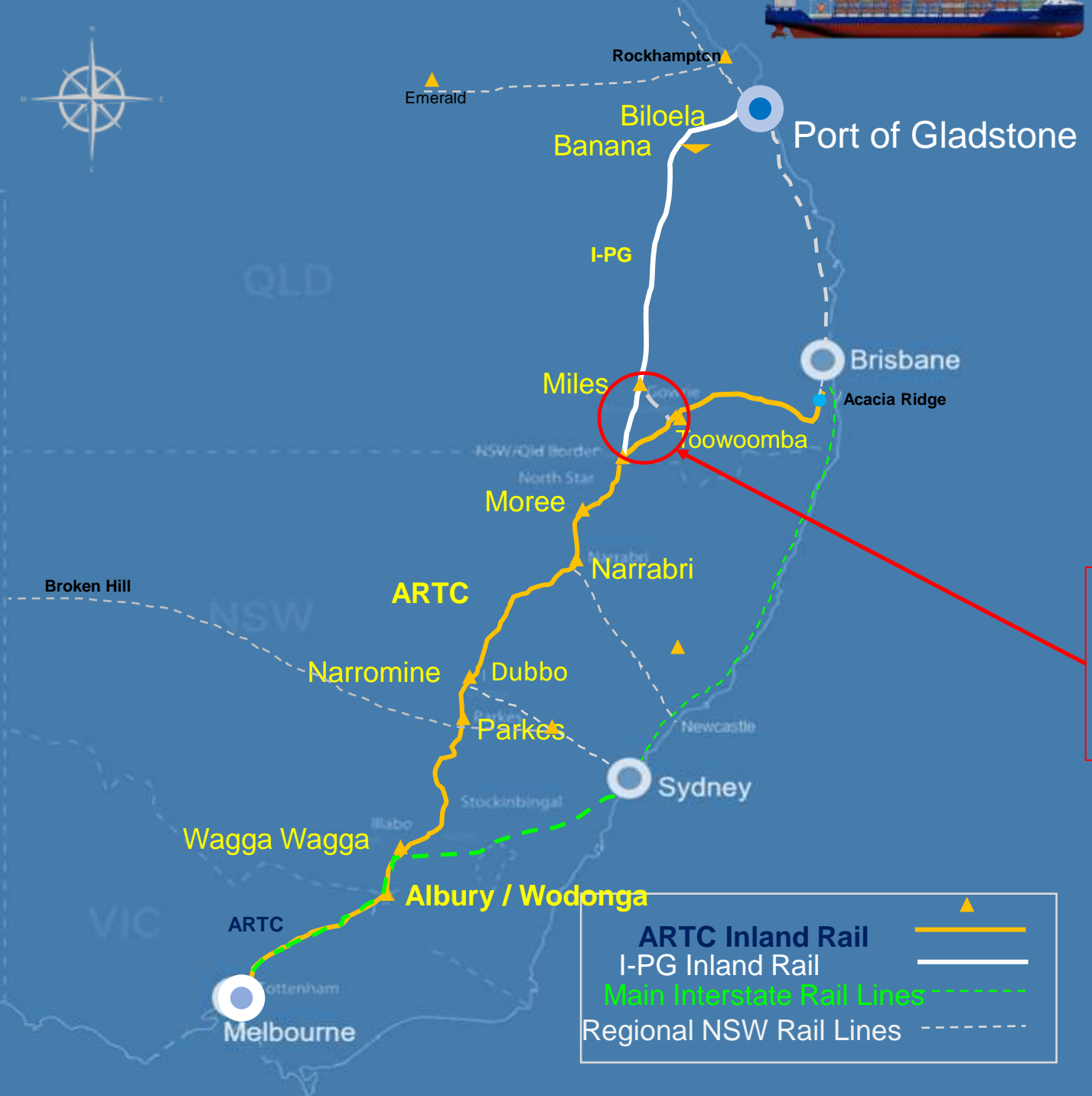


2021

*Melbourne to  
Brisbane &  
Gladstone*



# Inland rail link to Brisbane & Gladstone!



Just have to  
resolve the Route  
from the Border



# An Emerging Global Freight Network Underpinning Trade Growth & Trans Nation Economic Prosperity

**INDICATIVE SERVICE  
COMMENCEMENT 2025**





# GLADSTONE - MELBOURNE INLAND RAIL

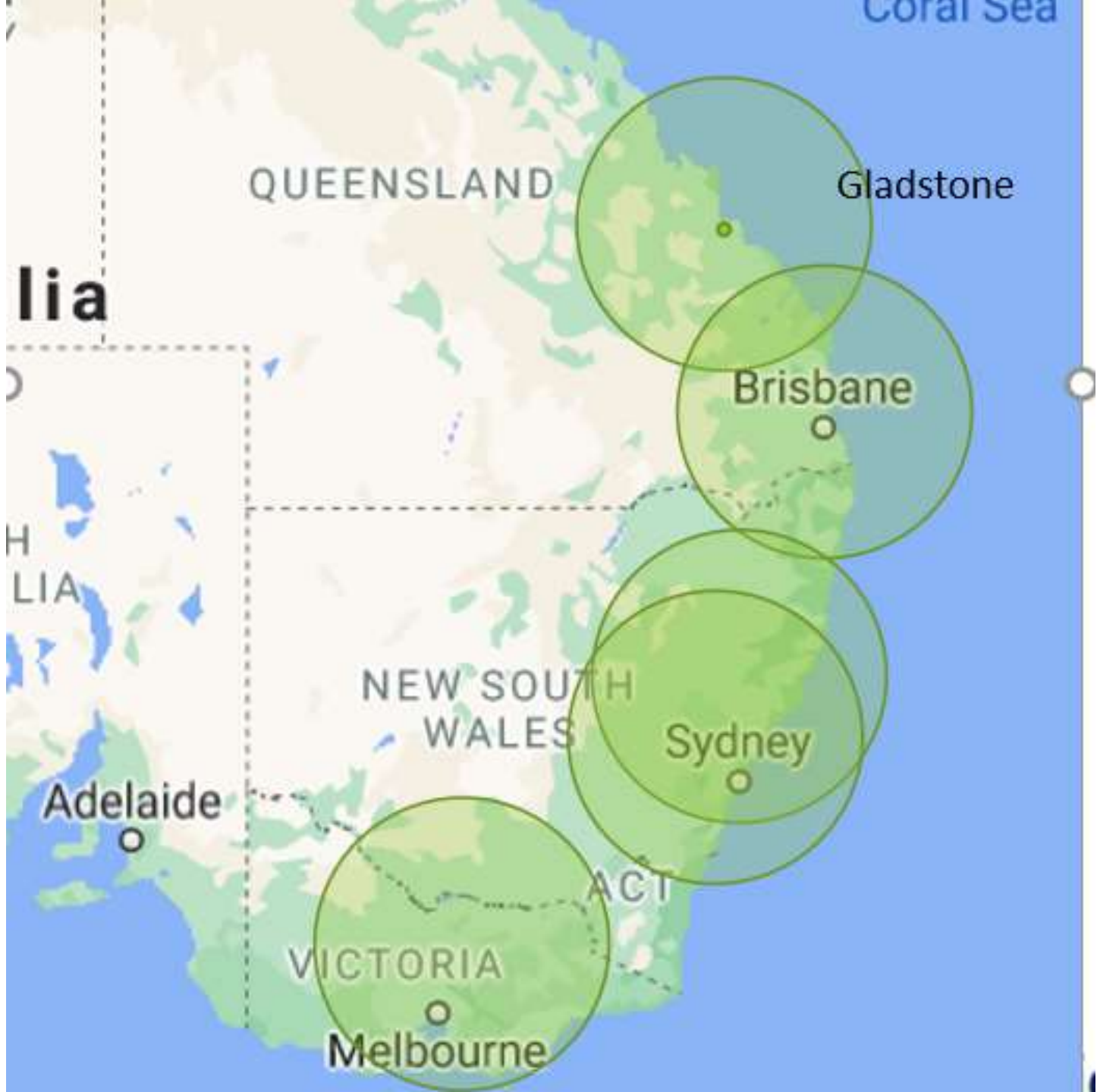
TOTAL CORRIDOR LENGTH 2024KM - AVERAGING 80KPH 25.3 HOURS



## MARITIME MULTIPLE PORTS OF CALL

IN PORT PLUS SEA TIME 188 HRS





Containers won't go on rail if destination is within 300 to 500 km radius

## An Alternate view of freight growth

Port	2017-18	2032-33	2050
Brisbane	1.6	3.6	4.8
Sydney (incl Kembla & Newcastle)	2.7	5.1	8.4
Melbourne (incl Geelong)	3.3	6.4	8.9
Gladstone	0.0	0.0	0.0
<b>TOTAL</b>	<b>7.6</b>	<b>15.1</b>	<b>22.1</b>

<b>Port</b>	<b>2017-18</b>	<b>2032-33</b>	<b>2050</b>
<b>Brisbane</b>	<b>1.6</b>	<b>3.0</b>	<b>4.8</b>
<b>Sydney (incl Kembla &amp; Newcastle)</b>	<b>2.6</b>	<b>4.5</b>	<b>5.8</b>
<b>Melbourne (incl Geelong)</b>	<b>3.3</b>	<b>5.6</b>	<b>7.5</b>
<b>Gladstone</b>	<b>0.0</b>	<b>2.0</b>	<b>4.0</b>
<b>TOTAL</b>	<b>7.5</b>	<b>15.1</b>	<b>22.1</b>



Trieste – a 2 Million TEU terminal









I-PG





**I-PG**



